

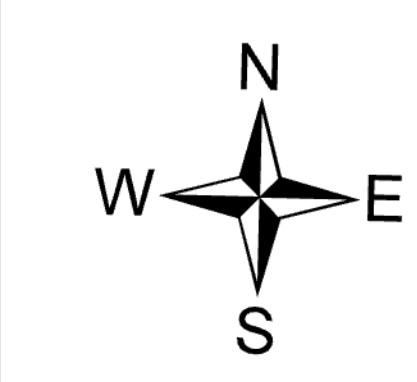
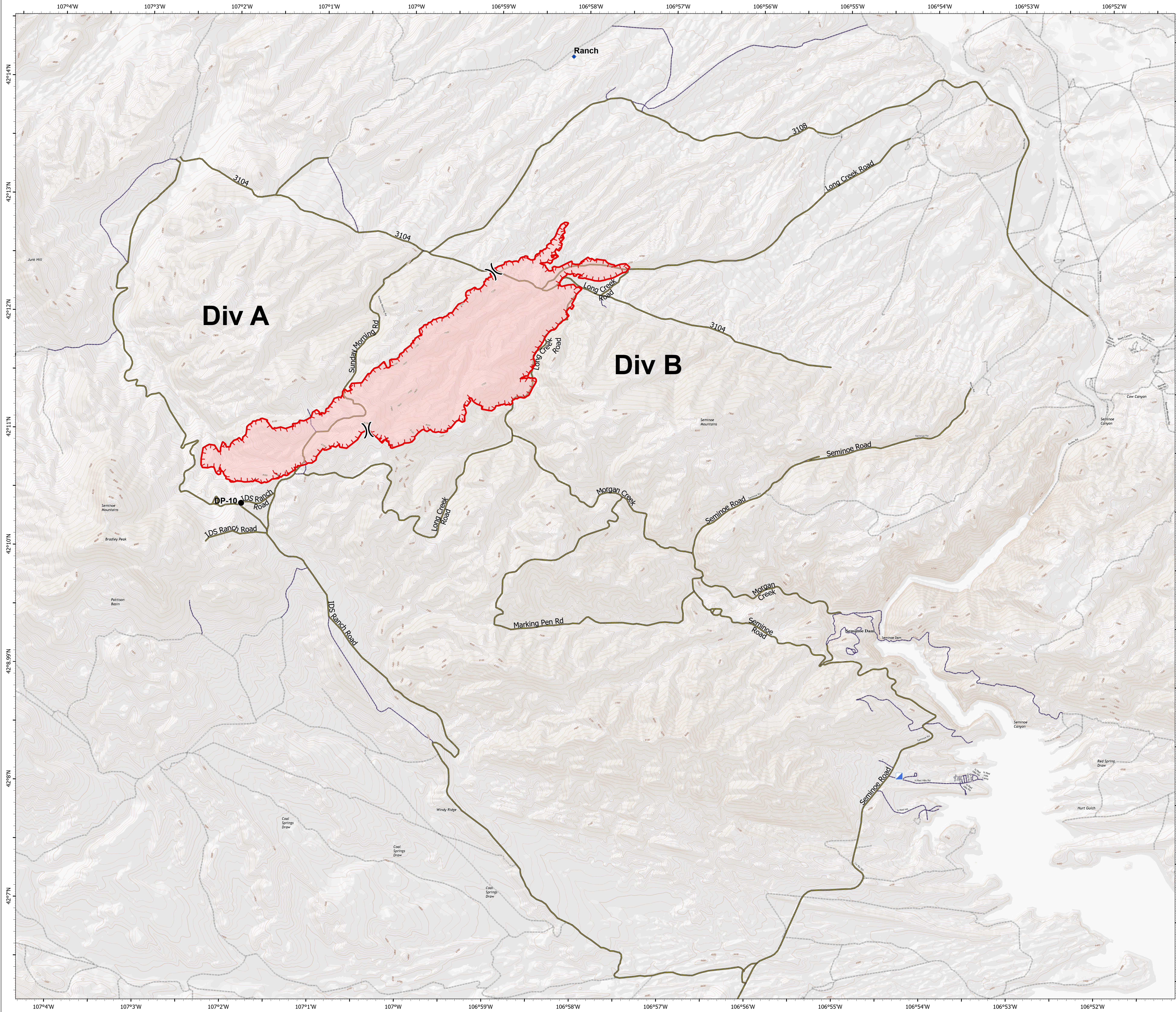
Transportation

Bradley Fire
WY-RAD-200527
8/11/2020

1,783 acres at 1817 hrs on 8/9



- Dip Site
- Drop Point
- Incident Command Post
- Division Break
- Uncontrolled Fire Edge
- Controlled access
- Highway or ramp
- Local connector
- Local or 4WD road
- Tunnel
- Ferry
- Local or 4WD road
- Hillshade_045
- Hillshade_110
- Hillshade_160
- Hillshade_200
- Hillshade_254
- Main_Fire_Roads
- Surrounding_Roads



jzm
8/10/2020 2105
North American 1983 Datum. Lat/Long
Grid