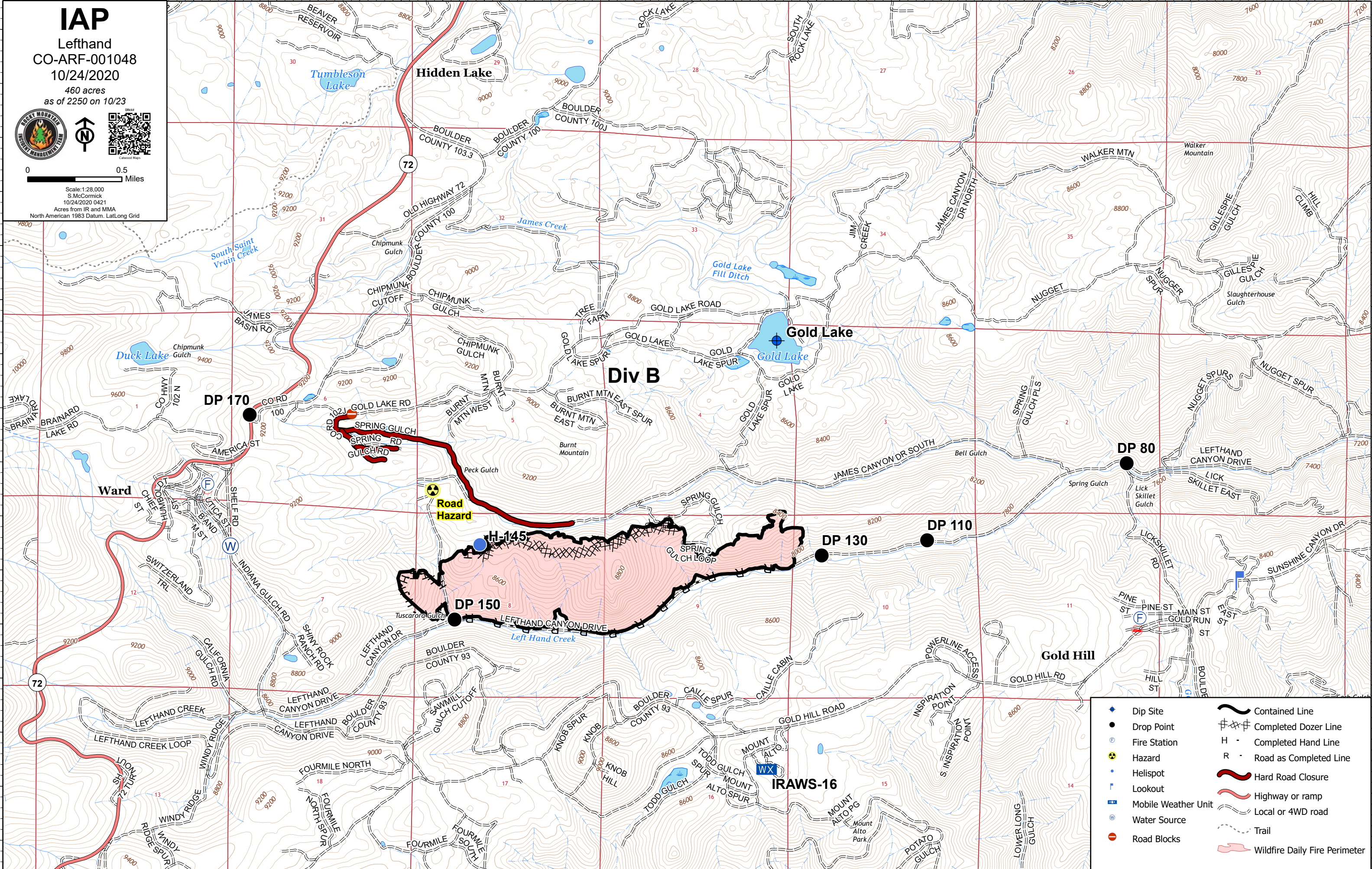


105°31.5'W 105°31'W 105°30.5'W 105°30'W 105°29.5'W 105°29'W 105°28.51'W 105°28'W 105°27.5'W 105°27'W 105°26.5'W 105°26'W 105°25.5'W 105°25'W 105°24.5'W 105°24'W 105°23.5'W

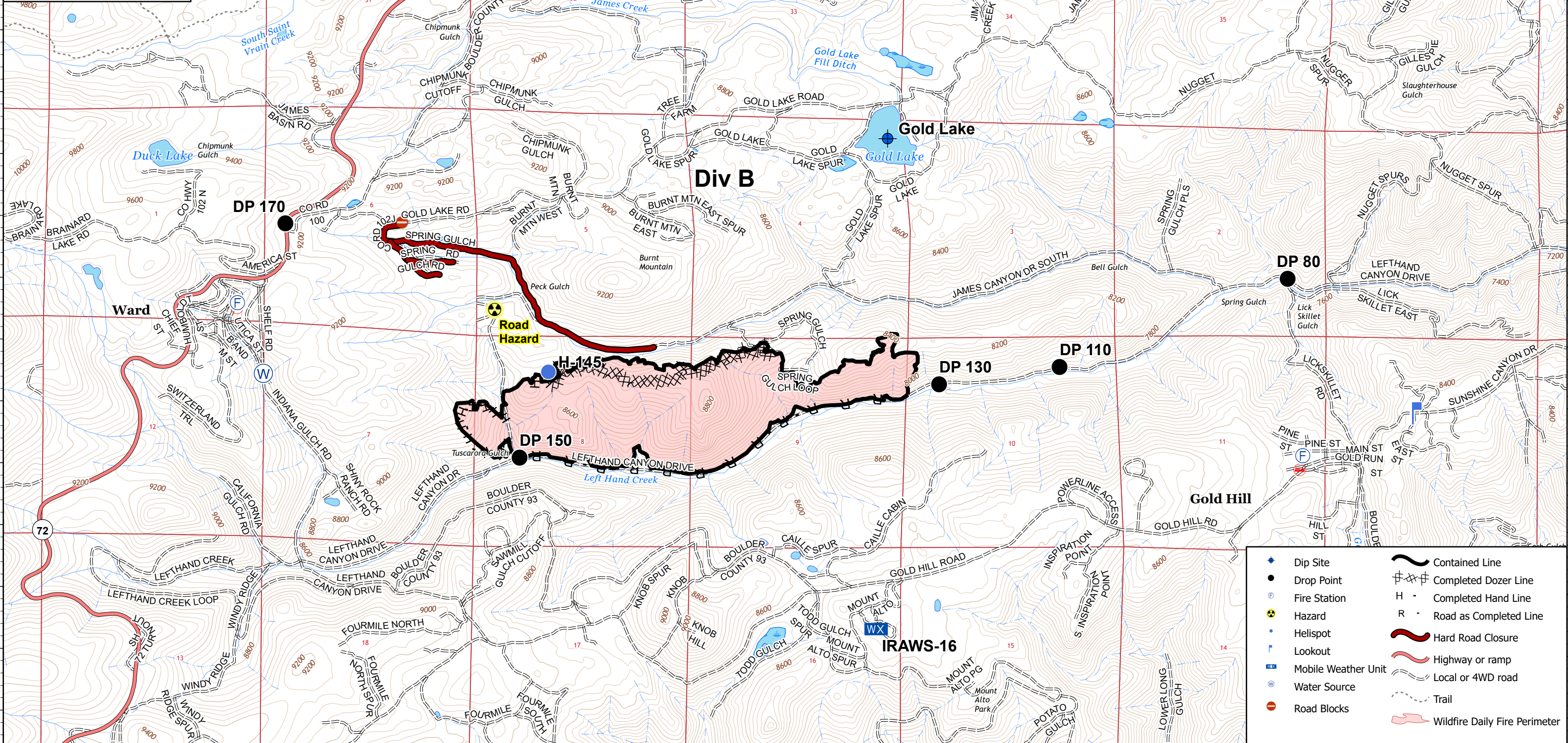














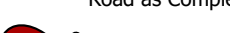
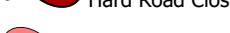
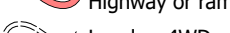
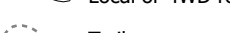
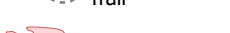
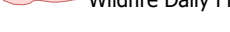
IAP
 Lefthand
 CO-ARF-001048
 10/24/2020
 460 acres
 as of 2250 on 10/23





Scale: 1:28,000
 S. McCormick
 10/24/2020 04Z1
 Acres from IR and MMA
 North American 1983 Datum, Lat/Long Grid



-  Dip Site
-  Drop Point
-  Fire Station
-  Hazard
-  Helispot
-  Lookout
-  Mobile Weather Unit
-  Water Source
-  Road Blocks
-  Contained Line
-  Completed Dozer Line
-  Completed Hand Line
-  Road as Completed Line
-  Hard Road Closure
-  Highway or ramp
-  Local or 4WD road
-  Trail
-  Wildfire Daily Fire Perimeter

105°31.5'W 105°31'W 105°30.5'W 105°30'W 105°29.5'W 105°29'W 105°28.51'W 105°28'W 105°27.5'W 105°27'W 105°26.5'W 105°26'W 105°25.5'W 105°25'W 105°24.5'W 105°24'W 105°23.5'W