


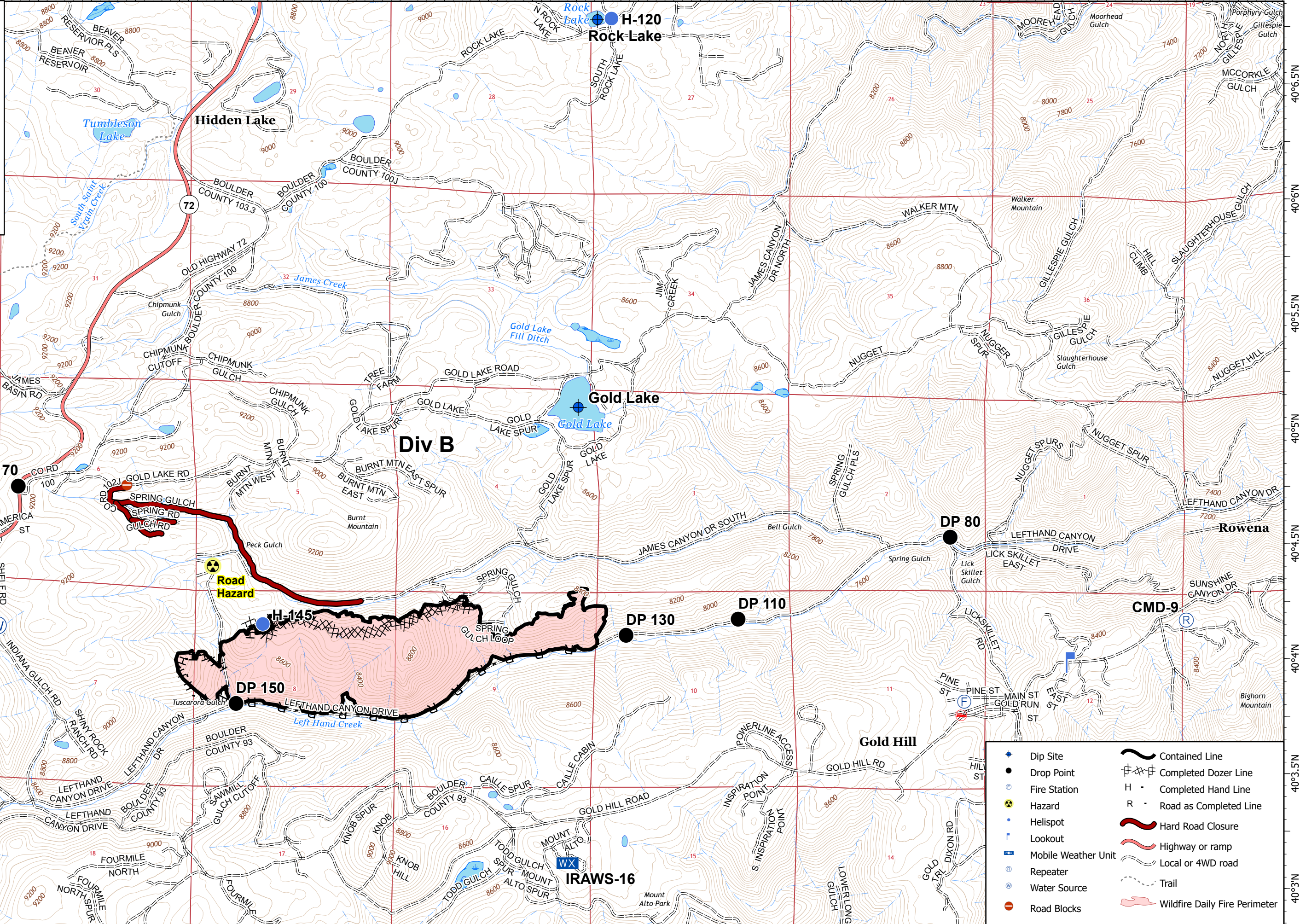


105°31'W 105°30.5'W 105°30'W 105°29.5'W 105°29'W 105°28.5'W 105°28'W 105°27.5'W 105°27'W 105°26.5'W 105°26'W 105°25.5'W 105°25'W 105°24.5'W 105°24'W 105°23.5'W 105°23'W

IAP
 Lefthand
 CO-ARF-001048
 10/25/2020
 460 acres
 as of 2130 on 10/24

Scale: 1:28,000
 S. McCormick
 10/24/2020 2:32Z
 Acres from IR and MMA
 North American 1983 Datum, Lat/Long Grid



	Dip Site		Contained Line
	Drop Point		Completed Dozer Line
	Fire Station		Completed Hand Line
	Hazard		Road as Completed Line
	Helispot		Hard Road Closure
	Lookout		Highway or ramp
	Mobile Weather Unit		Local or 4WD road
	Repeater		Trail
	Water Source		Wildfire Daily Fire Perimeter
	Road Blocks		

105°31'W 105°30.5'W 105°30'W 105°29.5'W 105°29'W 105°28.5'W 105°28'W 105°27.5'W 105°27'W 105°26.5'W 105°26'W 105°25.5'W 105°25'W 105°24.5'W 105°24'W 105°23.5'W 105°23'W