


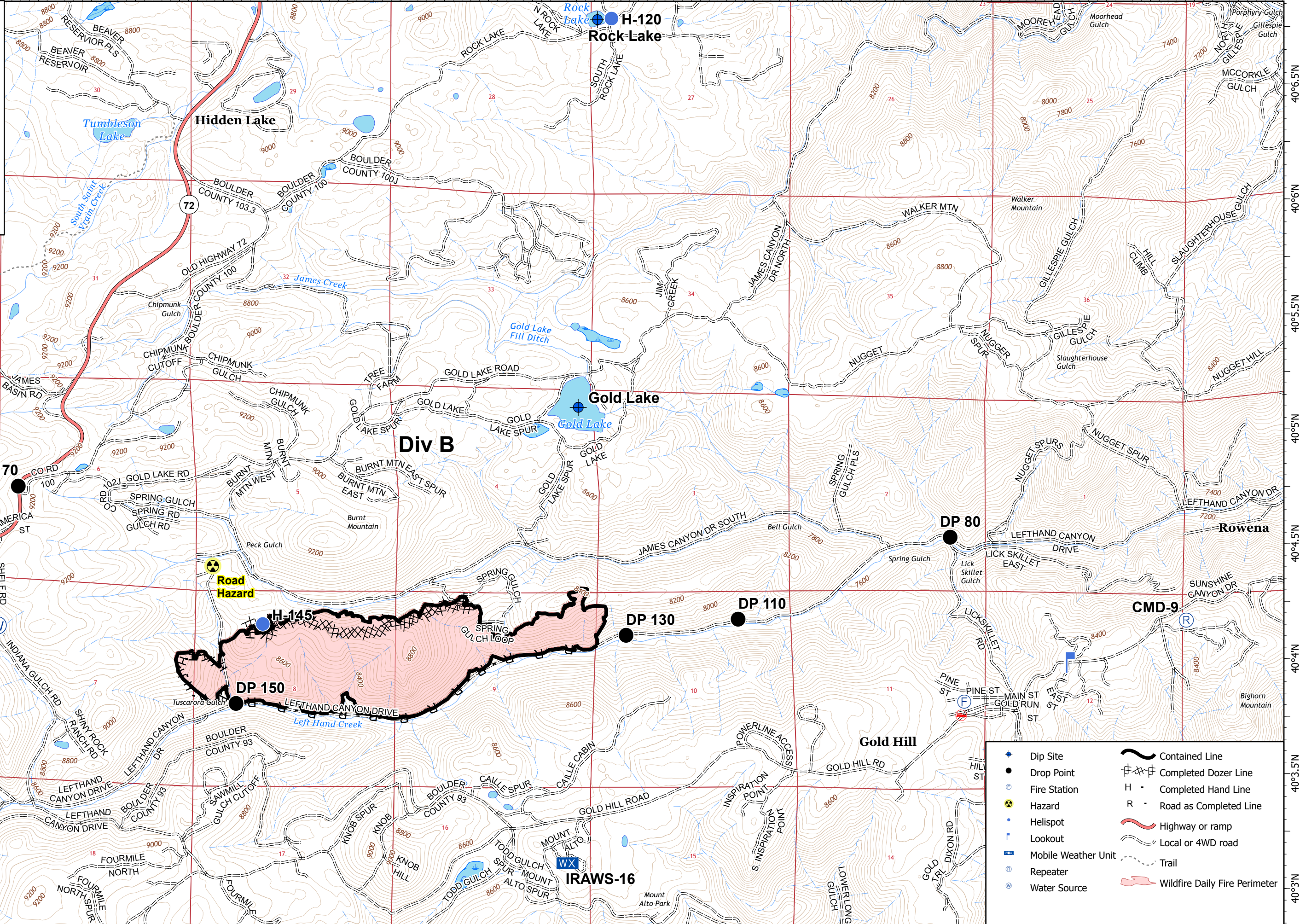


105°31'W 105°30.5'W 105°30'W 105°29.5'W 105°29'W 105°28.5'W 105°28'W 105°27.5'W 105°27'W 105°26.5'W 105°26'W 105°25.5'W 105°25'W 105°24.5'W 105°24'W 105°23.5'W 105°23'W

IAP
 Lefthand
 CO-ARF-001048
 10/26/2020
 460 acres
 as of 2130 on 10/24

0 0.5 Miles
 Scale: 1:28,000
 S. McCormick
 10/25/2020 2:00B
 Acres from IR and MMA
 North American 1983 Datum, Lat/Long Grid



	Dip Site		Contained Line
	Drop Point		Completed Dozer Line
	Fire Station		Completed Hand Line
	Hazard		Road as Completed Line
	Helispot		Highway or ramp
	Lookout		Local or 4WD road
	Mobile Weather Unit		Trail
	Repeater		Wildfire Daily Fire Perimeter
	Water Source		

105°31'W 105°30.5'W 105°30'W 105°29.5'W 105°29'W 105°28.5'W 105°28'W 105°27.5'W 105°27'W 105°26.5'W 105°26'W 105°25.5'W 105°25'W 105°24.5'W 105°24'W 105°23.5'W 105°23'W