

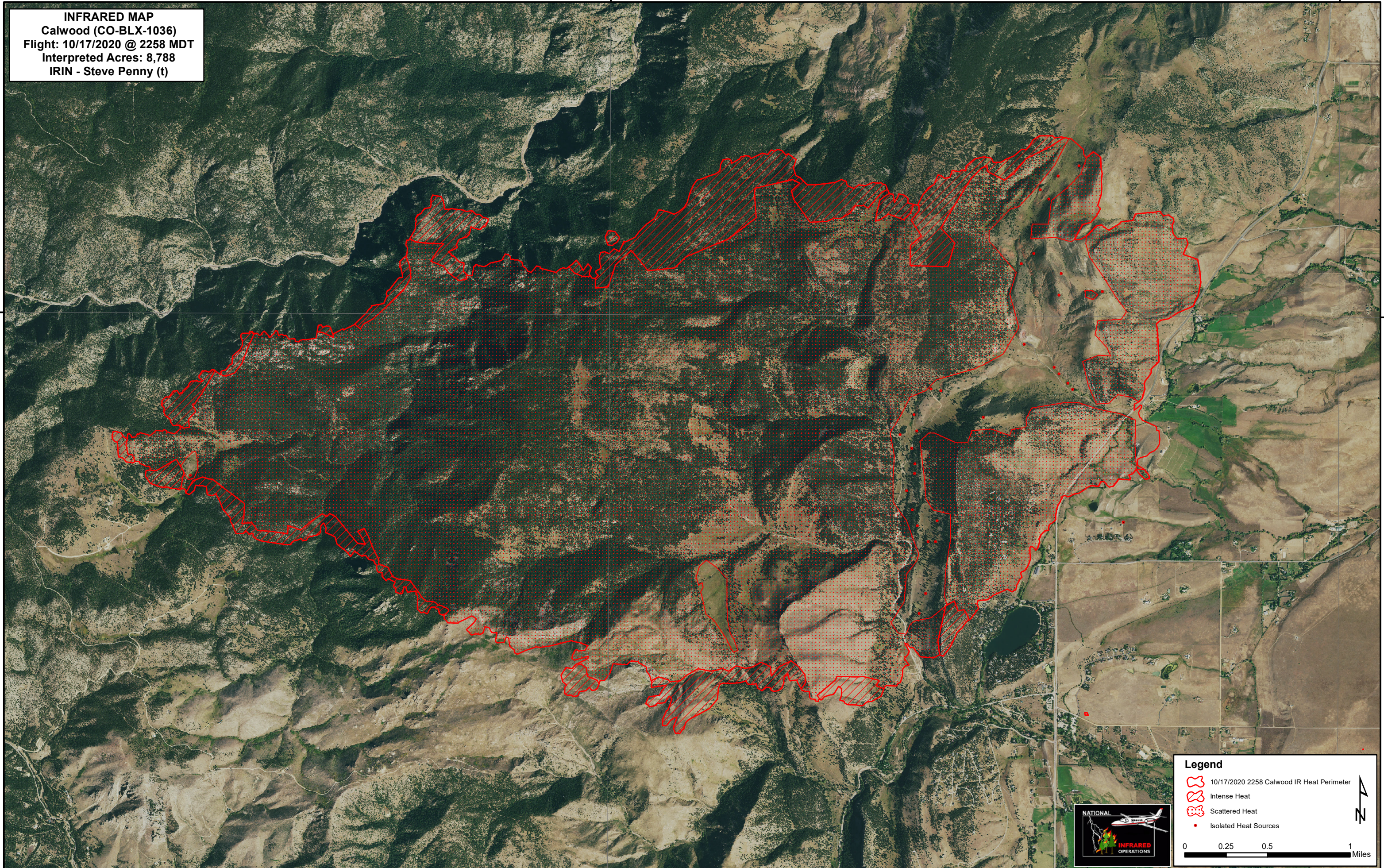
105°20'0"W

105°15'0"W





**INFRARED MAP**  
**Calwood (CO-BLX-1036)**  
**Flight: 10/17/2020 @ 2258 MDT**  
**Interpreted Acres: 8,788**  
**IRIN - Steve Penny (t)**

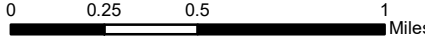
40°10'0"N

40°10'0"N



**Legend**

-  10/17/2020 2258 Calwood IR Heat Perimeter
-  Intense Heat
-  Scattered Heat
-  Isolated Heat Sources



105°20'0"W

105°15'0"W