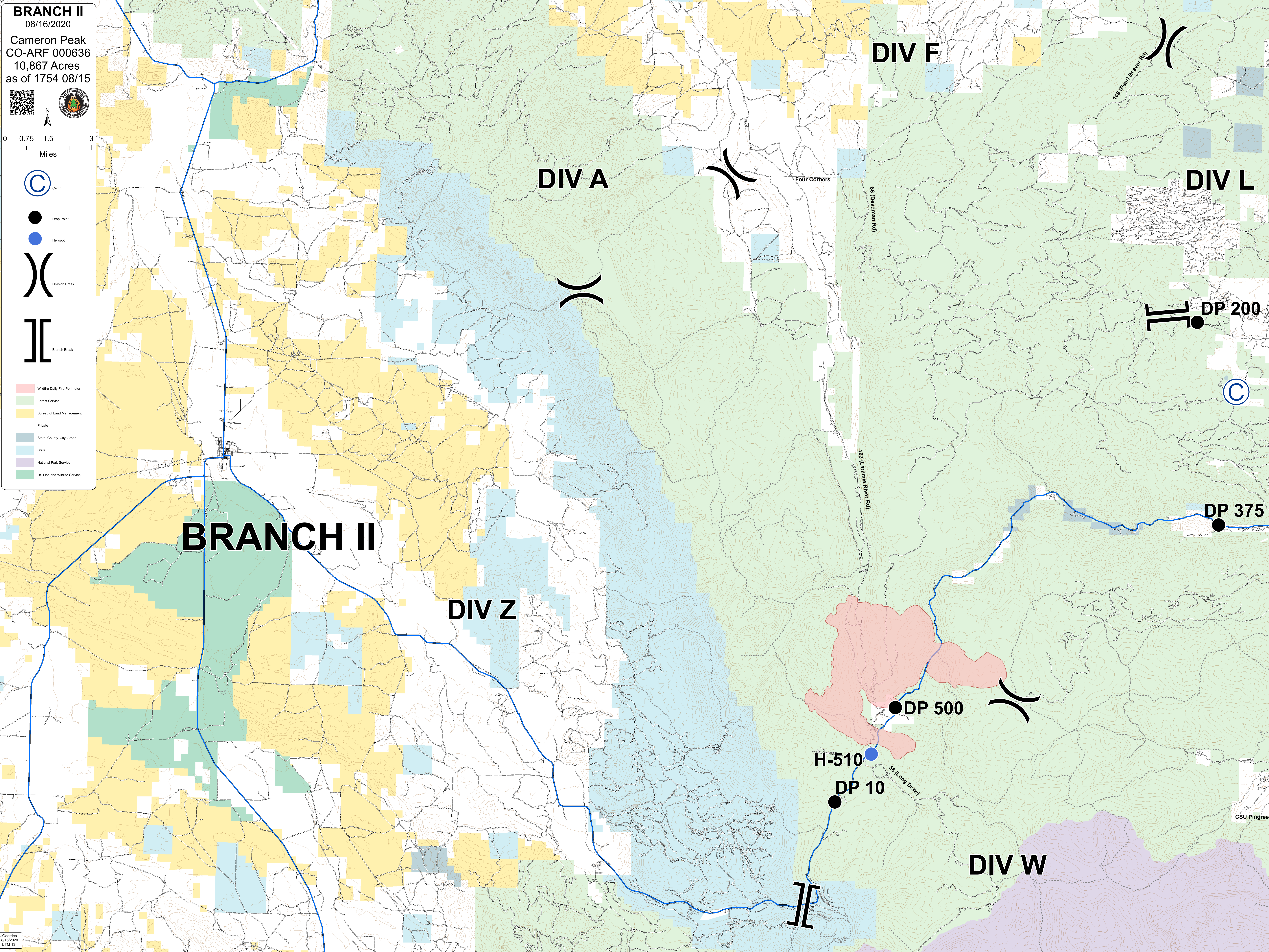


**BRANCH II**  
08/16/2020  
Cameron Peak  
CO-ARF 000636  
10,867 Acres  
as of 1754 08/15



- Camp
- Drop Point
- Helipoint
- Division Break
- Branch Break
- Wildfire Daily Fire Perimeter
- Forest Service
- Bureau of Land Management
- Private
- State, County, City, Areas
- State
- National Park Service
- US Fish and Wildlife Service



**BRANCH II**

**DIV A**

**DIV Z**

**DIV W**

**DIV F**

**DIV L**

**H-510**

**DP 10**

**DP 500**

**DP 200**

**DP 375**

Four Corners

86 (Ouedman Rd)

103 (Laramie River Rd)

86 (Long Draw)

109 (Pawnee Beaver Rd)

CSU Pingree P