

# IAP Index

08/16/2020

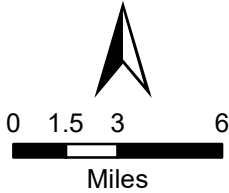
## Cameron Peak

CO-ARF 000636

10,867 Acres  
as of 1754 08/15



N



Branch II

) ( Division Break

|| Branch Break

□ Closure Area

■ Fire Perimeter

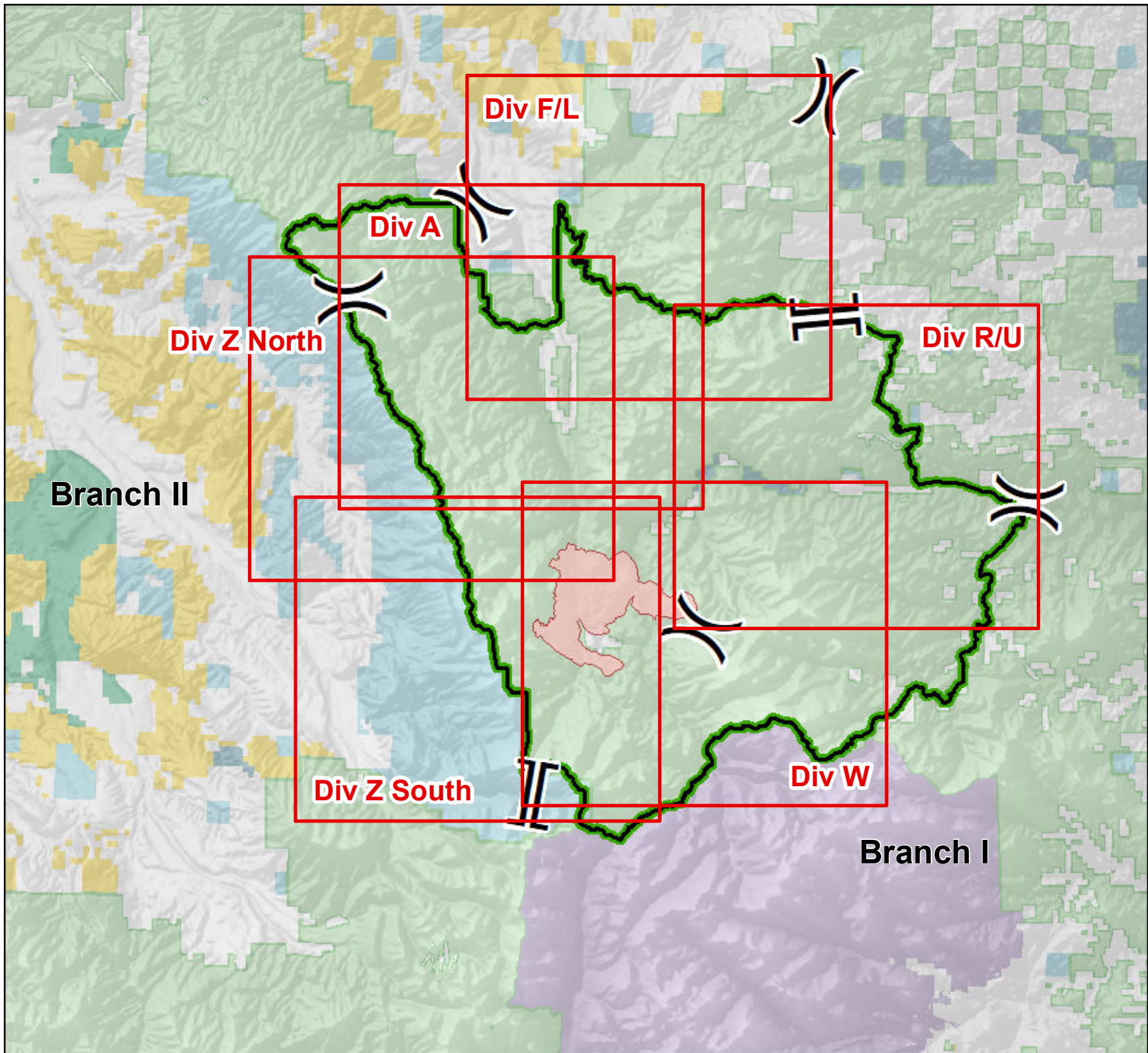
■ Forest Service

Private

■ State Wildlife Areas

■ State

S. Myers  
8/15/2020 2057  
UTM 13





IAP

08/16/2020

Cameron Peak  
CO-ARF 000636  
10,867 Acres  
as of 1754 08/15

Div A  
Branch II



0 0.5 1 2

Miles

▲ Critical Assets

● Drop Point

● Helispot

? Fuels Cache

) Division Break

|| Branch Break

■ Fire Perimeter

▭ Closure Area

— Highway or ramp

== Local or 4WD road

- - - Trail

▨ Lakes

— Streams

■ Forest Service

■ Bureau of Land Management

■ Private

■ State, County, City; Areas

■ State

■ National Park Service

S. Myers  
8/15/2020 2124  
UTM 13





# IAP

08/16/2020

**Cameron Peak**  
CO-ARF 000636  
10,867 Acres  
as of 1754 08/15

## Div F/L Branch II

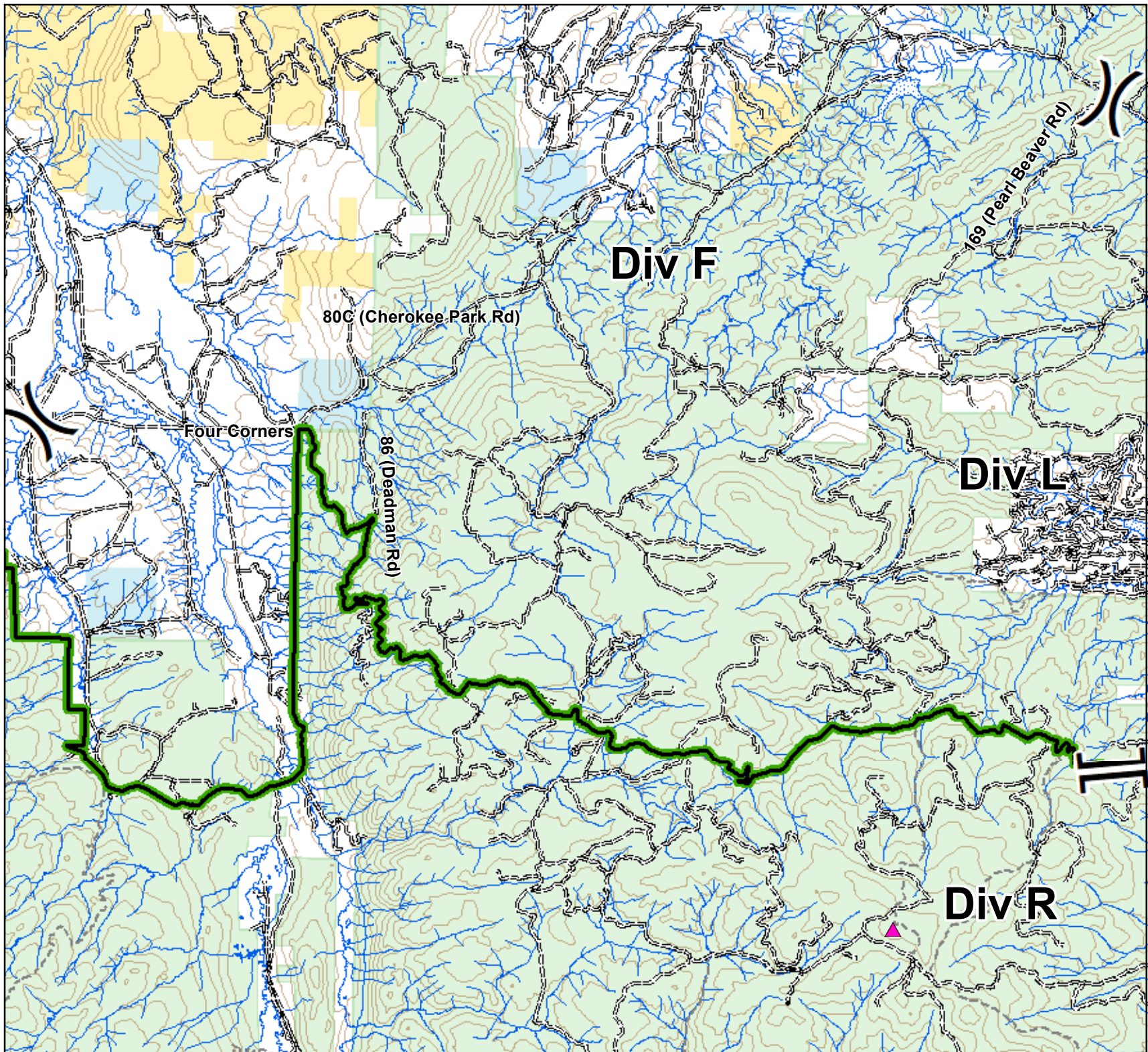


0 0.5 1 2

Miles

- Critical Assets
- Drop Point
- Helispot
- Fuels Cache
- Division Break
- Branch Break
- Fire Perimeter
- Closure Area
- Highway or ramp
- Local or 4WD road
- Trail
- Lakes
- Streams
- Forest Service
- Bureau of Land Management
- Private
- State, County, City; Areas
- State
- National Park Service

S. Myers  
8/15/2020 2124  
UTM 13





IAP

08/16/2020

















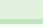


Cameron Peak  
CO-ARF 000636  
10,867 Acres  
as of 1754 08/15

Div R/U  
Branch I

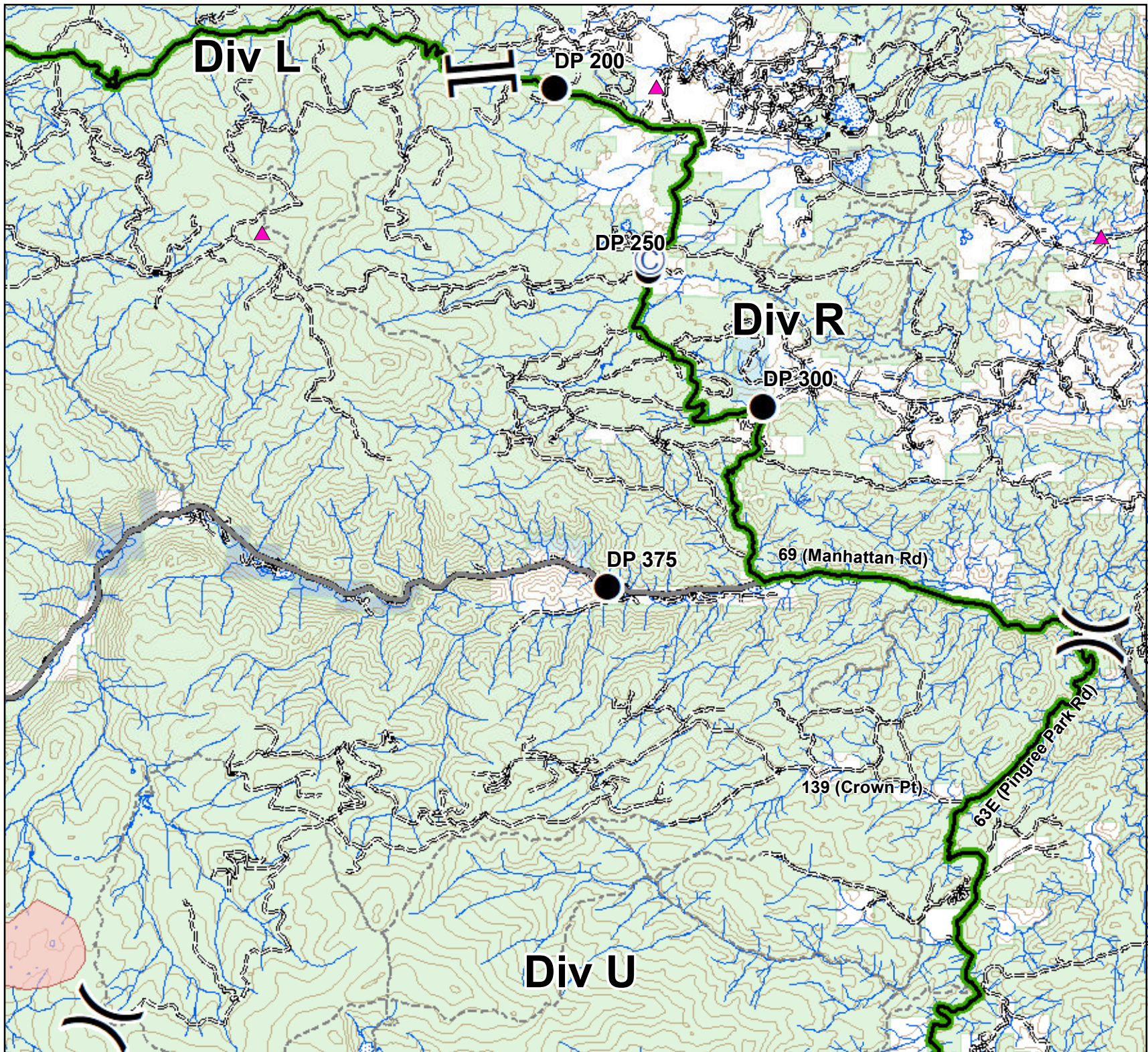


0 0.5 1 2

Miles

-  Critical Assets
-  Drop Point
-  Helispot
-  Fuels Cache
-  Division Break
-  Branch Break
-  Fire Perimeter
-  Closure Area
-  Highway or ramp
-  Local or 4WD road
-  Trail
-  Lakes
-  Streams
-  Forest Service
-  Bureau of Land Management
-  Private
-  State, County, City; Areas
-  State
-  National Park Service

S. Myers  
8/15/2020 2124  
UTM 13





# IAP

08/16/2020

**Cameron Peak**  
CO-ARF 000636  
10,867 Acres  
as of 1754 08/15

## Div W Branch I

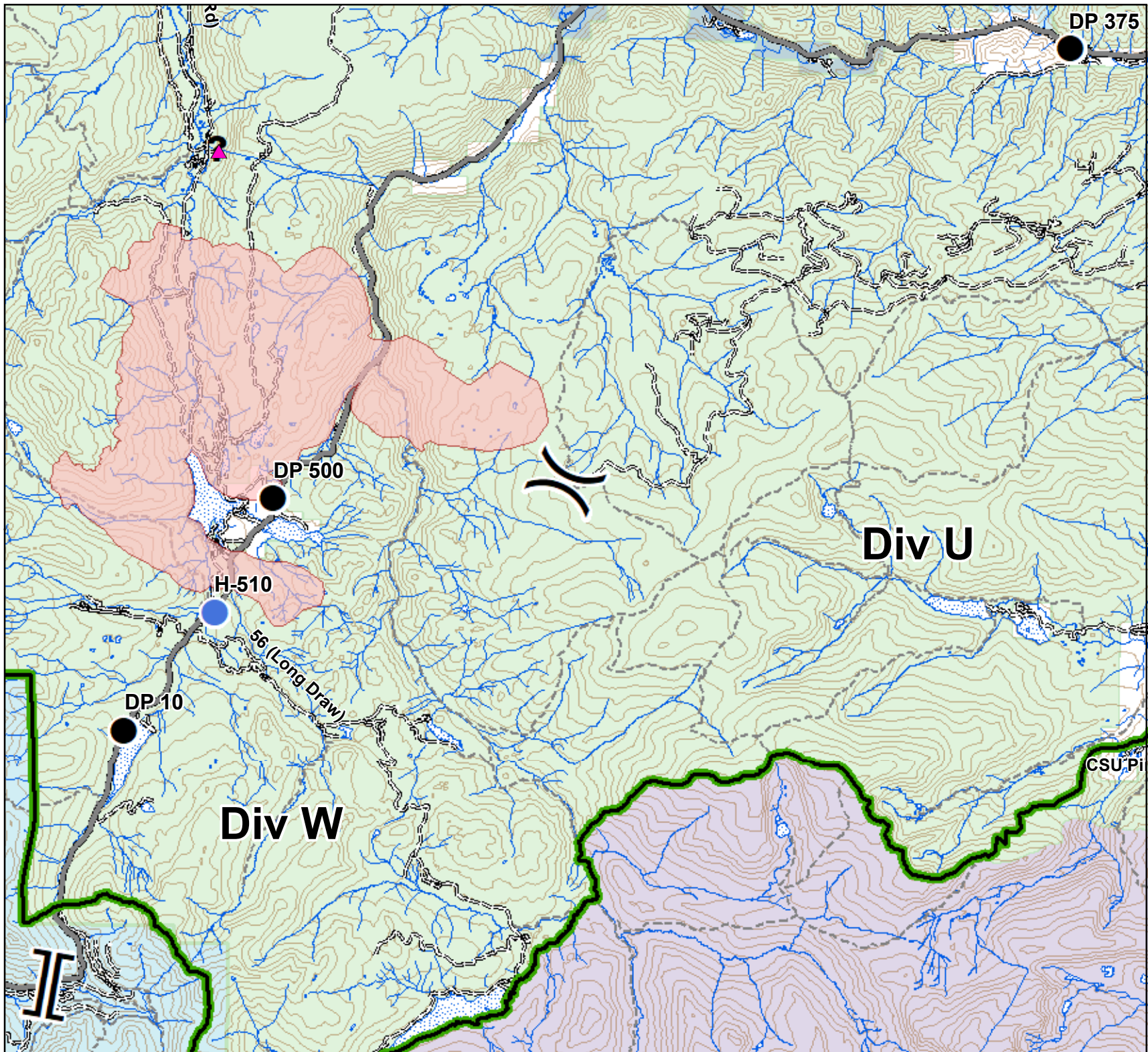


0 0.5 1 2

Miles

- Critical Assets
- Drop Point
- Helispot
- Fuels Cache
- Division Break
- Branch Break
- Fire Perimeter
- Closure Area
- Highway or ramp
- Local or 4WD road
- Trail
- Lakes
- Streams
- Forest Service
- Bureau of Land Management
- Private
- State, County, City; Areas
- State
- National Park Service

S. Myers  
8/15/2020 2124  
UTM 13





# IAP

08/16/2020

**Cameron Peak**  
CO-ARF 000636  
10,867 Acres  
as of 1754 08/15

## Div Z South Branch II



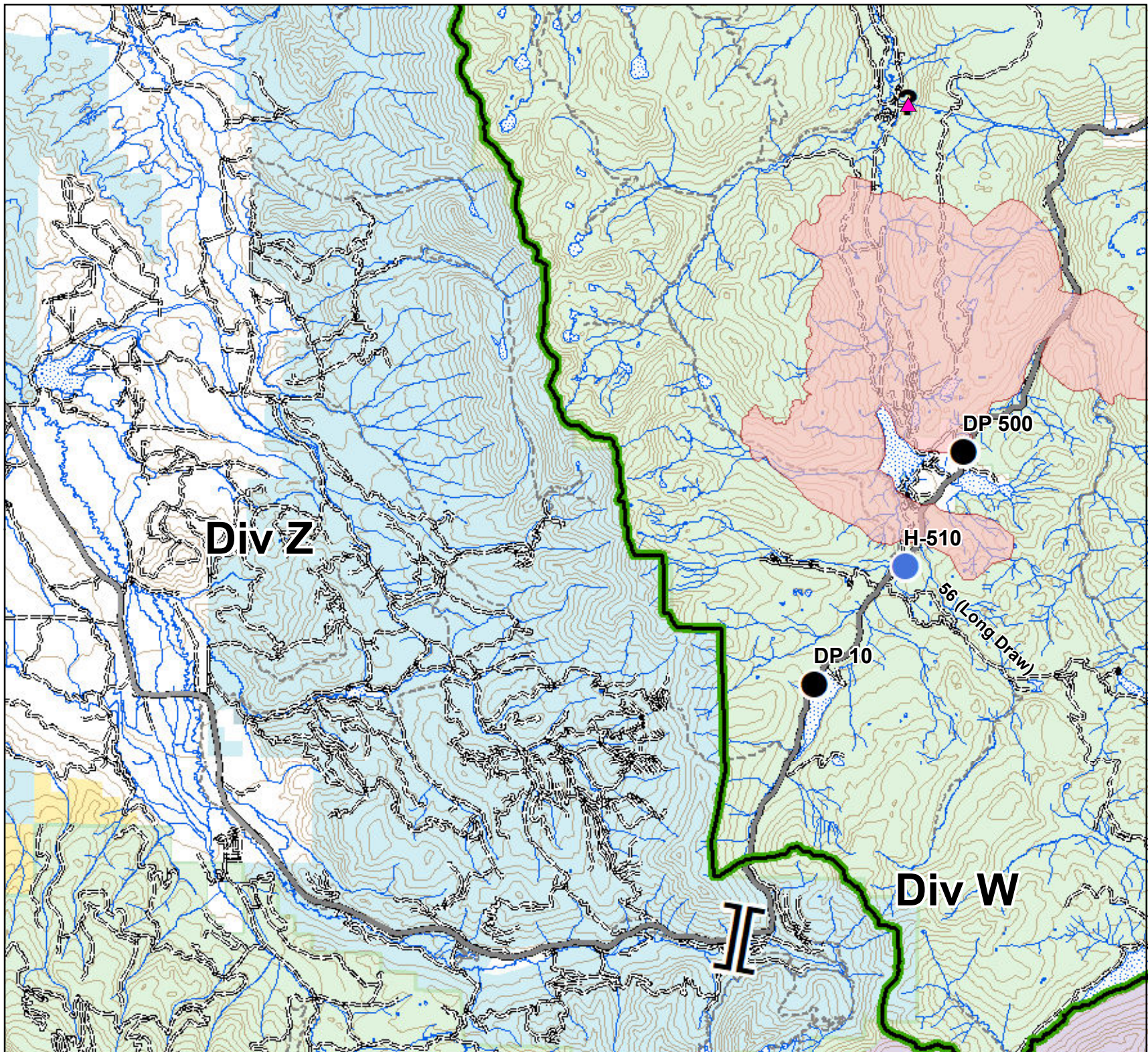
0 0.5 1 2

Miles

- Critical Assets
- Drop Point
- Helispot
- Fuels Cache
- Division Break
- Branch Break

- Fire Perimeter
- Closure Area
- Highway or ramp
- Local or 4WD road
- Trail
- Lakes
- Streams
- Forest Service
- Bureau of Land Management
- Private
- State, County, City; Areas
- State
- National Park Service

S. Myers  
8/15/2020 2124  
UTM 13





# IAP

08/16/2020

**Cameron Peak**  
CO-ARF 000636  
10,867 Acres  
as of 1754 08/15

## Div Z North Branch II



0 0.5 1 2

Miles

- Critical Assets
- Drop Point
- Helispot
- Fuels Cache
- Division Break
- Branch Break
- Fire Perimeter
- Closure Area
- Highway or ramp
- Local or 4WD road
- Trail
- Lakes
- Streams
- Forest Service
- Bureau of Land Management
- Private
- State, County, City; Areas
- State
- National Park Service

S. Myers  
8/15/2020 2124  
UTM 13

