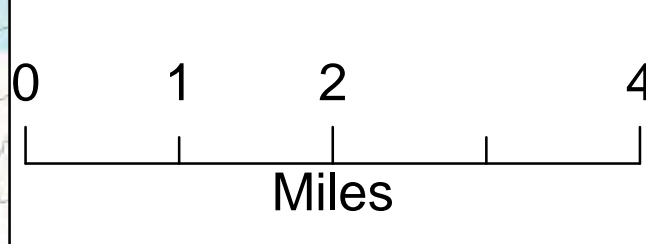
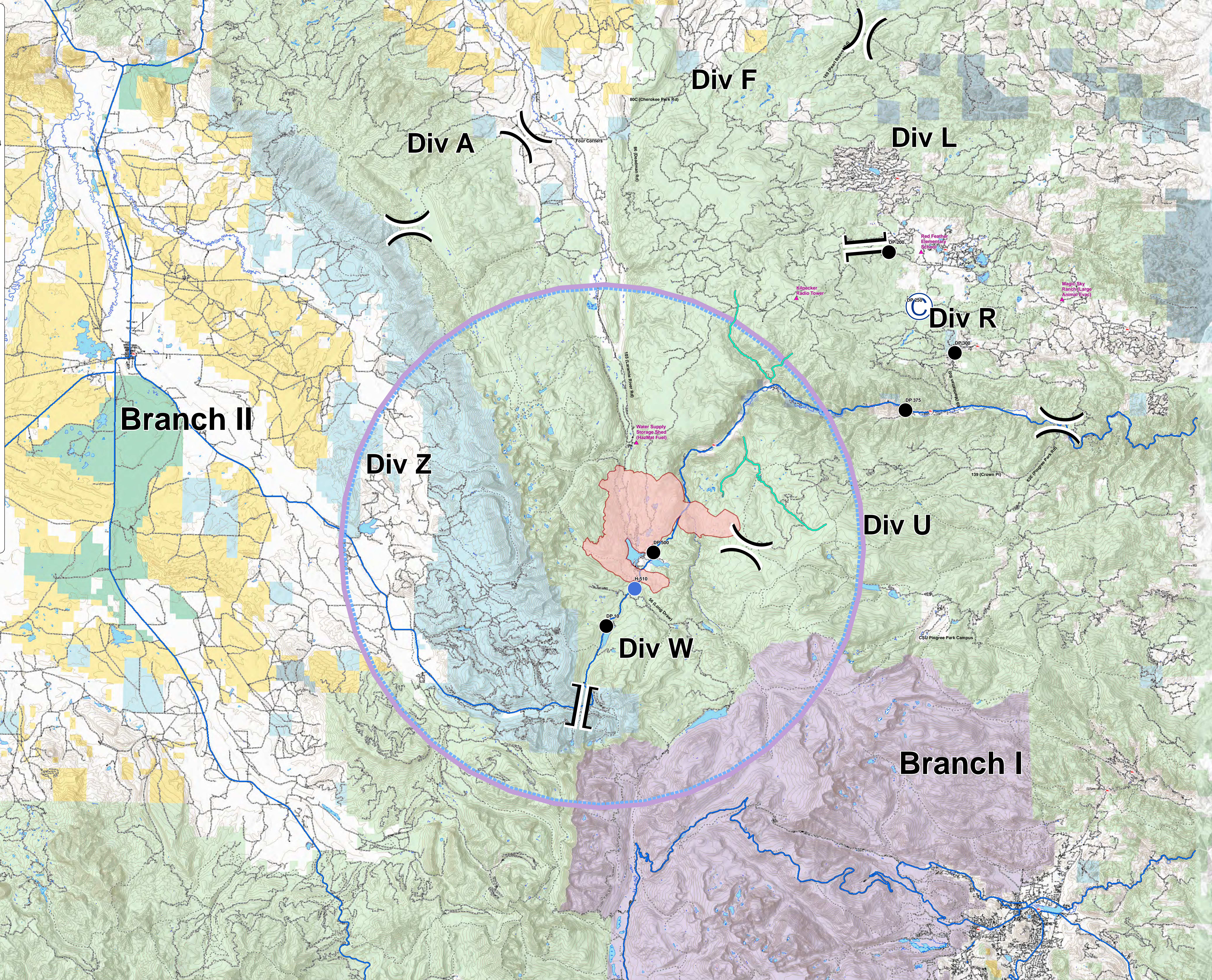


**OPS**  
08/16/2020  
Cameron Peak  
CO-ARF 000636  
10,867 Acres  
as of 1754 08/15



- Critical Assets
- Camp
- Drop Point
- Heliport
- Division Break
- Branch Break
- 600ft Retardant Avoidance Waterway
- FR\_0\_2880
- Wildfire Daily Fire Perimeter
- Forest Service
- Bureau of Land Management
- Private
- State, County, City Areas
- State
- National Park Service
- US Fish and Wildlife Service
- Other Federal



**Branch II**

**Div Z**

**Div W**

**Div U**

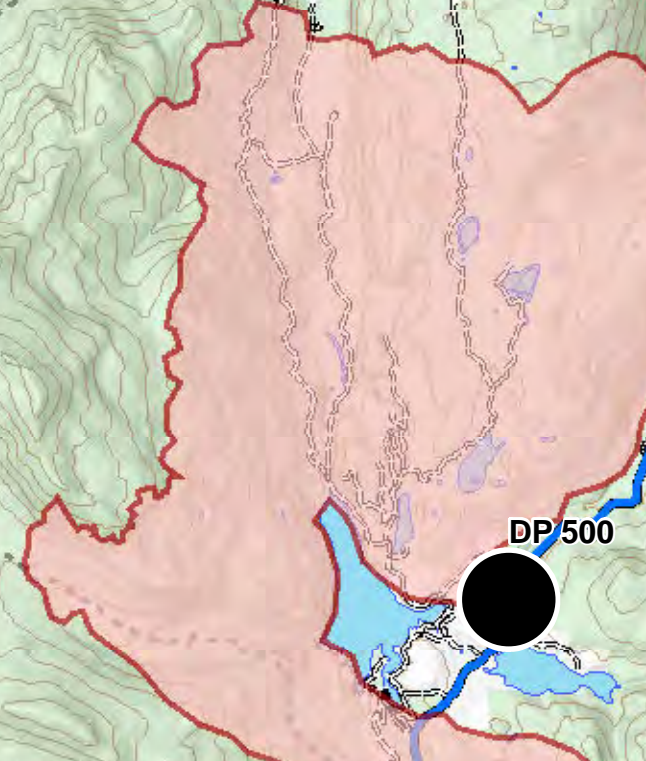
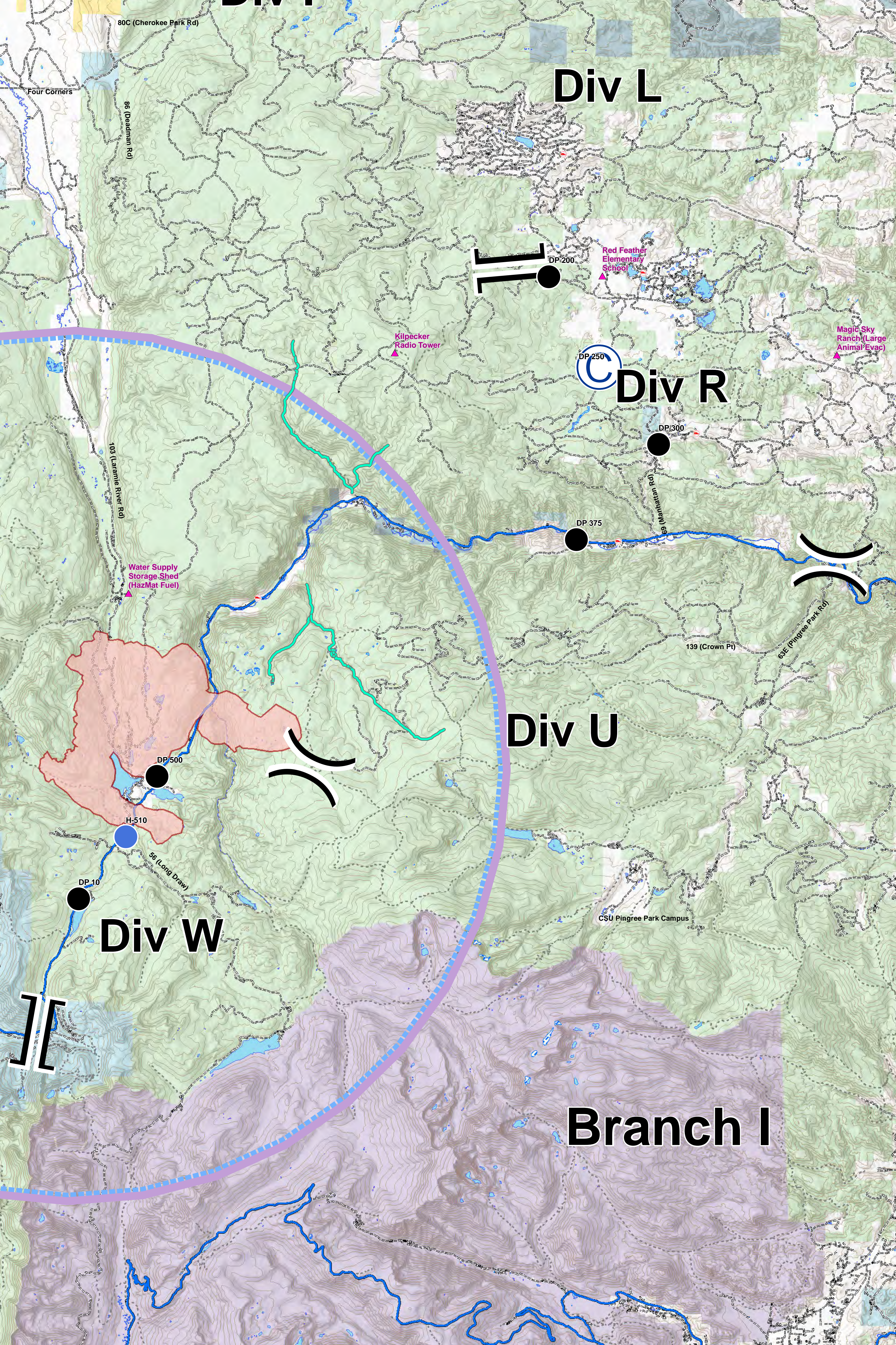
**Branch I**

**Div A**

**Div F**

**Div L**

**Div R**



DP200

DP300

DP375

DP500

DP10

H510

Water Supply Storage Shed (WizMtl Fuel)

Red Feather Elementary School

Magick Sky Ranch Large Animal Evac

Ridgebacker Radio Tower

CSU Pingree Park Campus

Four Corners

86 (Quaternary Rd)

103 (Laramie River Rd)

88 (Long Draw)

139 (Crown Pt)

804 (Pingree Park Rd)

100 (Front Range Blvd)