

# IAP Index

08/17/2020

## Cameron Peak

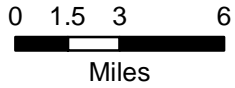
CO-ARF 000636

13,305 Acres

as of 1848 08/16



N



)) Division Break

]] Branch Break

█ Closure Area

█ Fire Perimeter

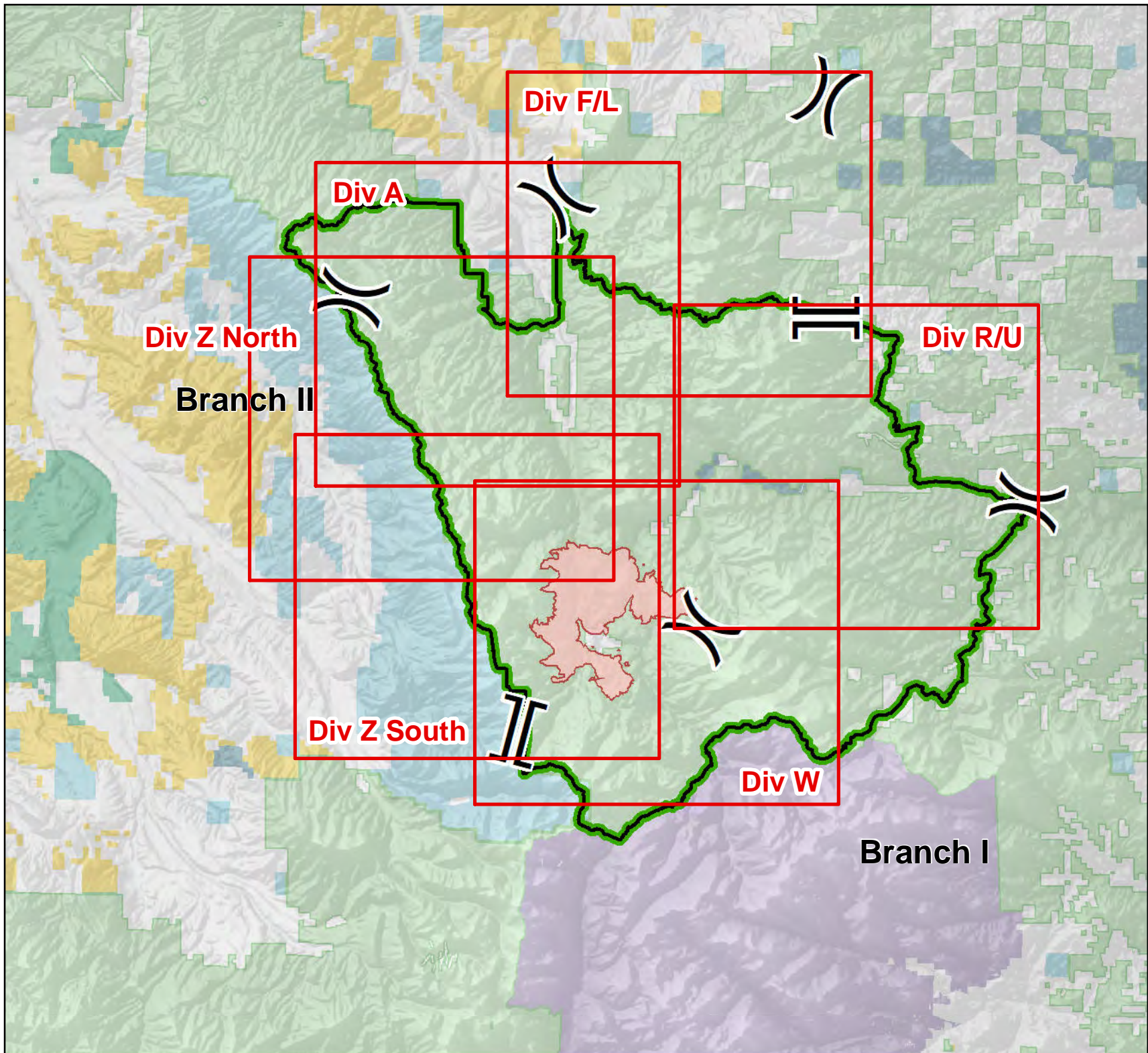
█ Forest Service

Private

█ State Wildlife Areas

█ State

S. Myers  
8/16/2020 2141  
UTM 13



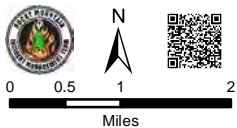
# IAP

08/17/2020

## Cameron Peak

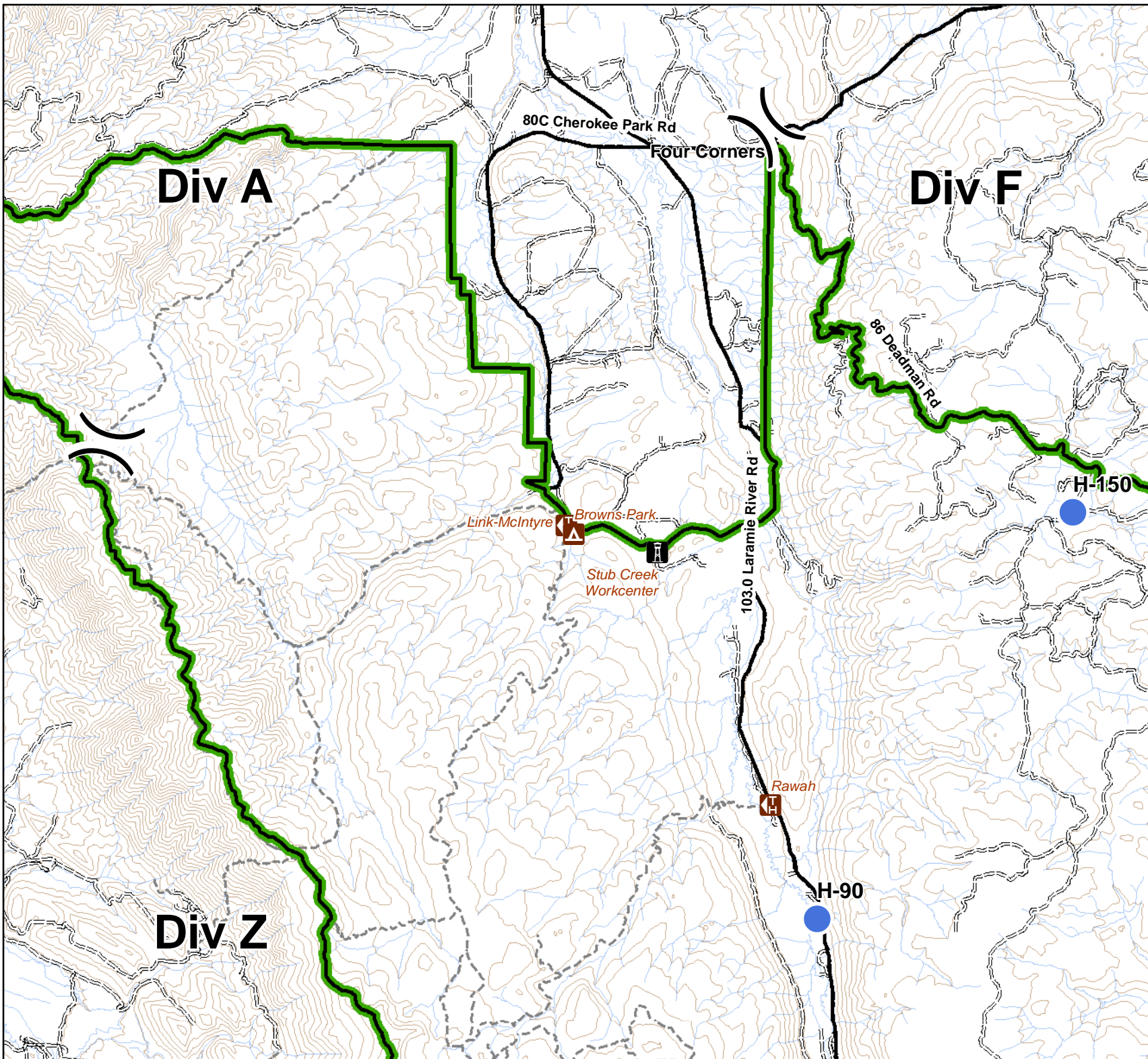
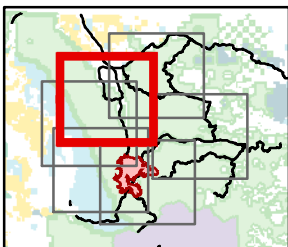
13,305 Acres  
as of 1848 08/16

### Div A Branch II



- Critical Assets
- Water Access
- Campground
- Day Use Area
- Picnic Site
- Other Recreation Site
- Trailhead
- Camp
- Drop Point
- Helispot
- Division Break
- Branch Break
- Uncontrolled Fire Edge
- Proposed Dozer Line
- Fire Perimeter
- Closure Area
- Primary Routes
- Highway
- Local or 4WD road
- Trail
- Lakes
- Streams
- Fire History

S. Myers  
8/16/2020 2135  
UTM 13



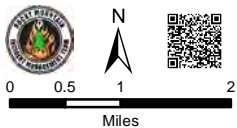
# IAP

08/17/2020

## Cameron Peak

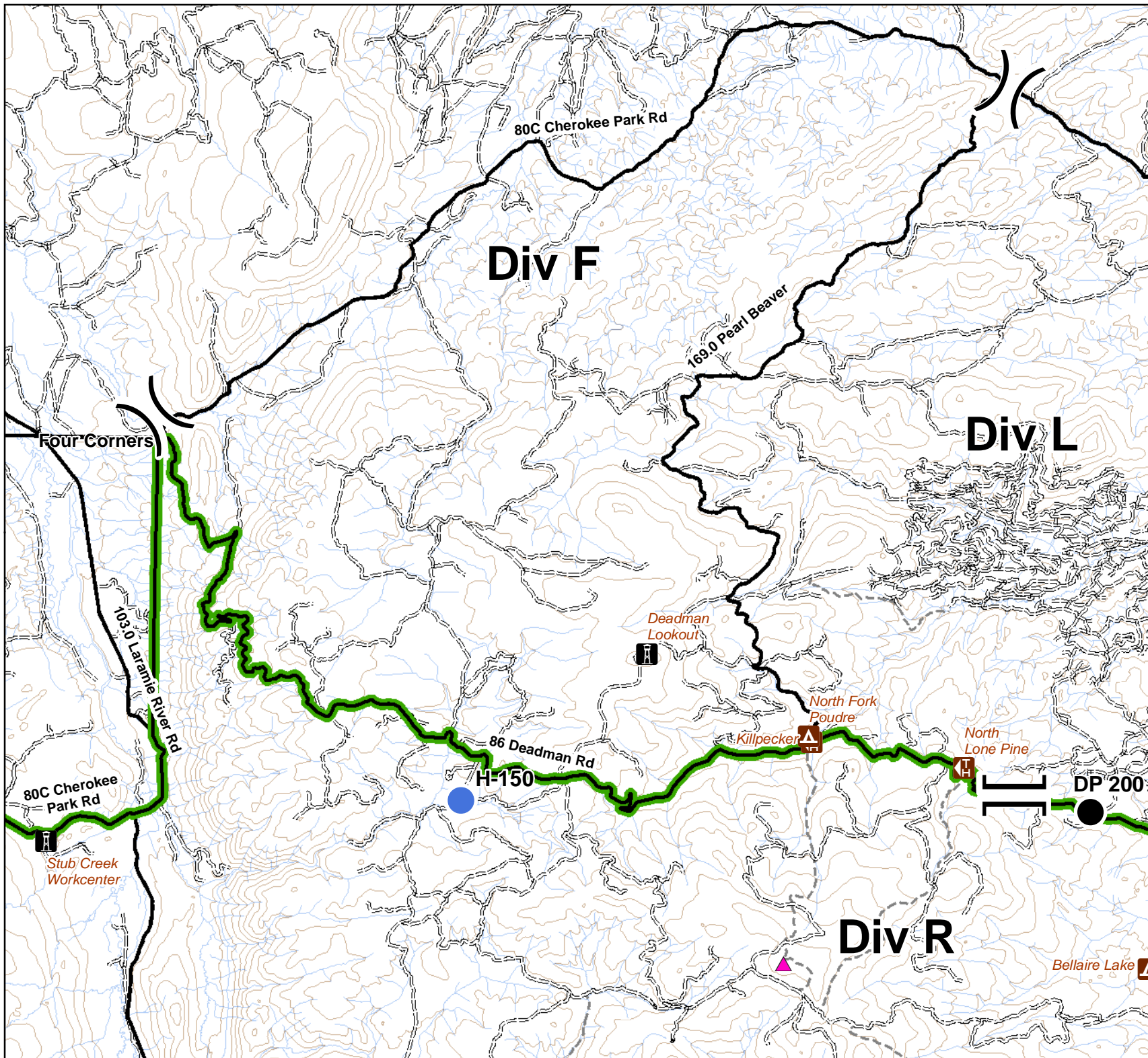
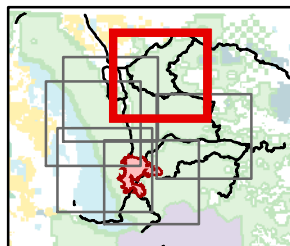
13,305 Acres  
as of 1848 08/16

### Div F/L Branch II



- Critical Assets
- Water Access
- Campground
- Day Use Area
- Picnic Site
- Other Recreation Site
- Trailhead
- Camp
- Drop Point
- Helispot
- Division Break
- Branch Break
- Uncontrolled Fire Edge
- Proposed Dozer Line
- Fire Perimeter
- Closure Area
- Primary Routes
- Highway
- Local or 4WD road
- Trail
- Lakes
- Streams
- Fire History

S. Myers  
8/16/2020 2135  
UTM 13



IAP

08/17/2020

### Cameron Peak

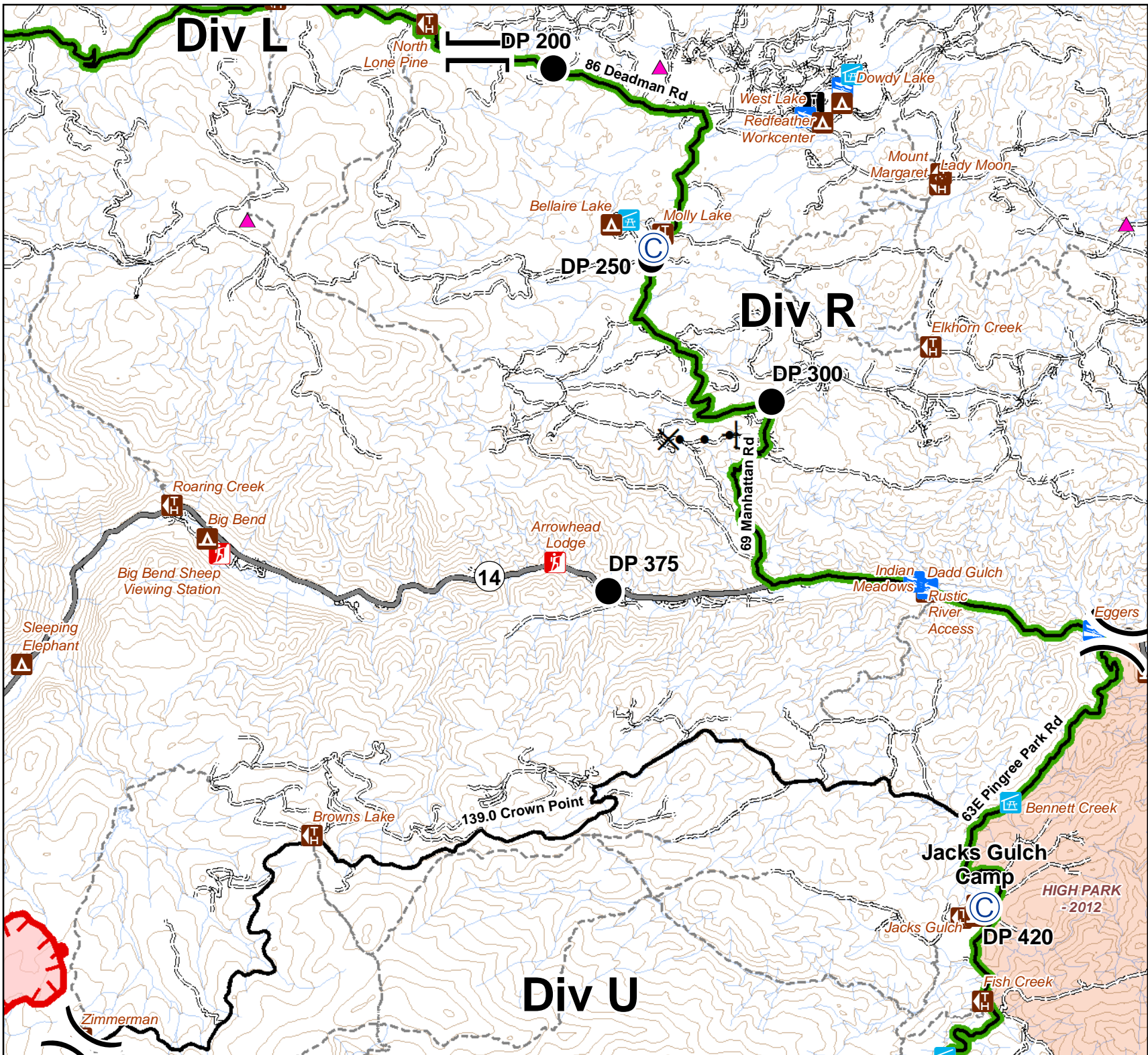
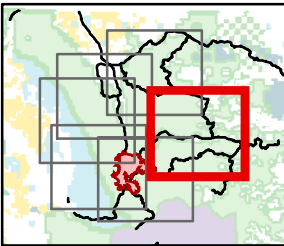
13,305 Acres  
as of 1848 08/16

### Div R/U Branch I



- Critical Assets
- Water Access
- Campground
- Day Use Area
- Picnic Site
- Other Recreation Site
- Trailhead
- Camp
- Drop Point
- Helispot
- Division Break
- Branch Break
- Uncontrolled Fire Edge
- Proposed Dozer Line
- Fire Perimeter
- Closure Area
- Primary Routes
- Highway
- Local or 4WD road
- Trail
- Lakes
- Streams
- Fire History

S. Myers  
8/16/2020 2136  
UTM 13



IAP

08/17/2020

### Cameron Peak

13,305 Acres  
as of 1848 08/16

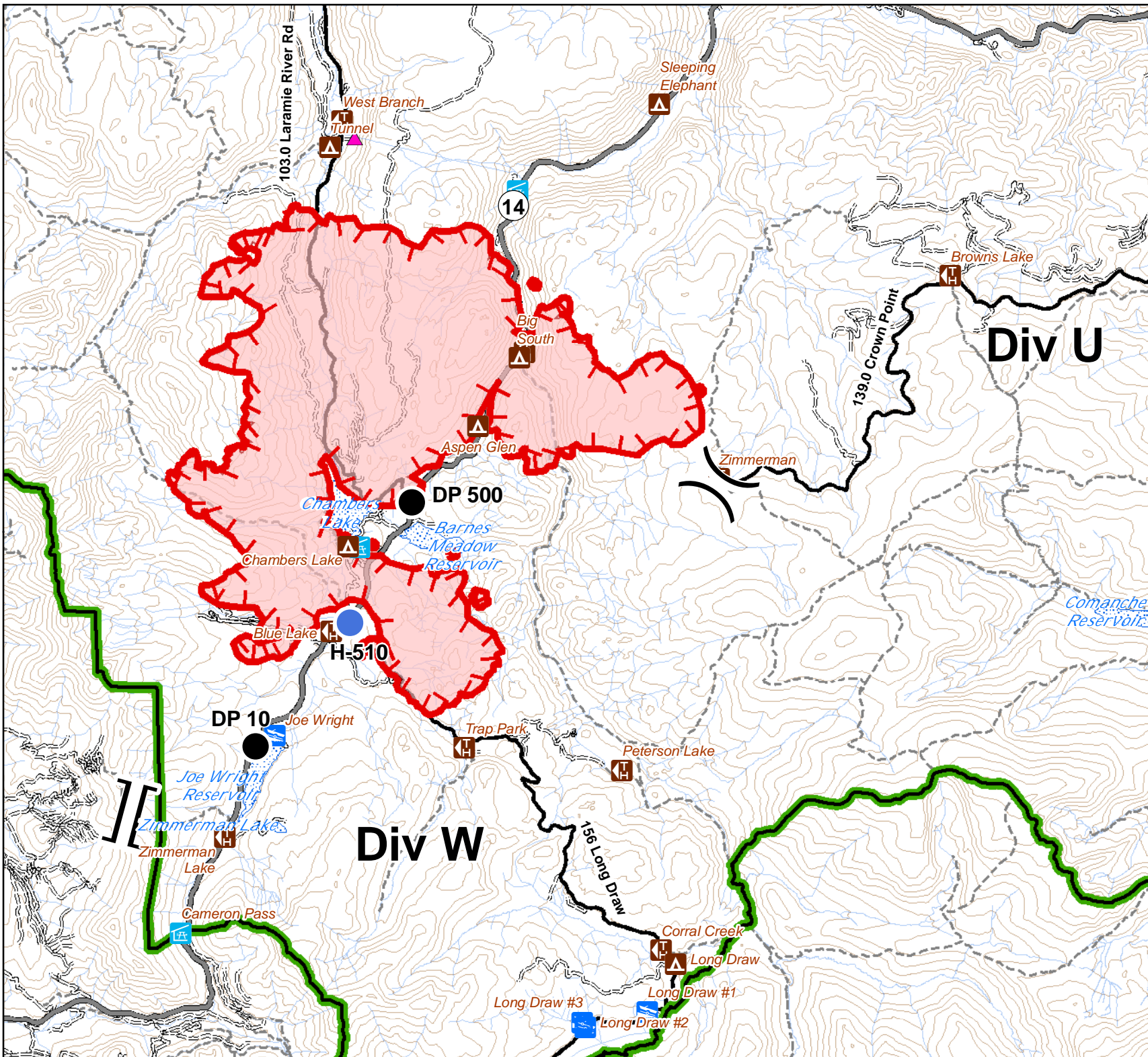
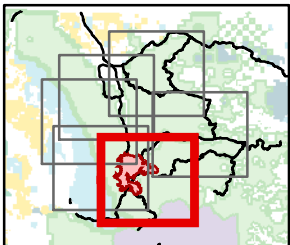
### Div W Branch I



- Critical Assets
- Water Access
- Campground
- Day Use Area
- Picnic Site
- Other Recreation Site
- Trailhead
- Camp
- Drop Point
- Helispot
- Division Break
- Branch Break

- Uncontrolled Fire Edge
- Proposed Dozer Line
- Fire Perimeter
- Closure Area
- Primary Routes
- Highway
- Local or 4WD road
- Trail
- Lakes
- Streams
- Fire History

S. Myers  
8/16/2020 2136  
UTM 13



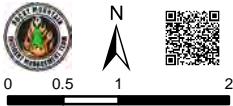
IAP

08/17/2020

### Cameron Peak

13,305 Acres  
as of 1848 08/16

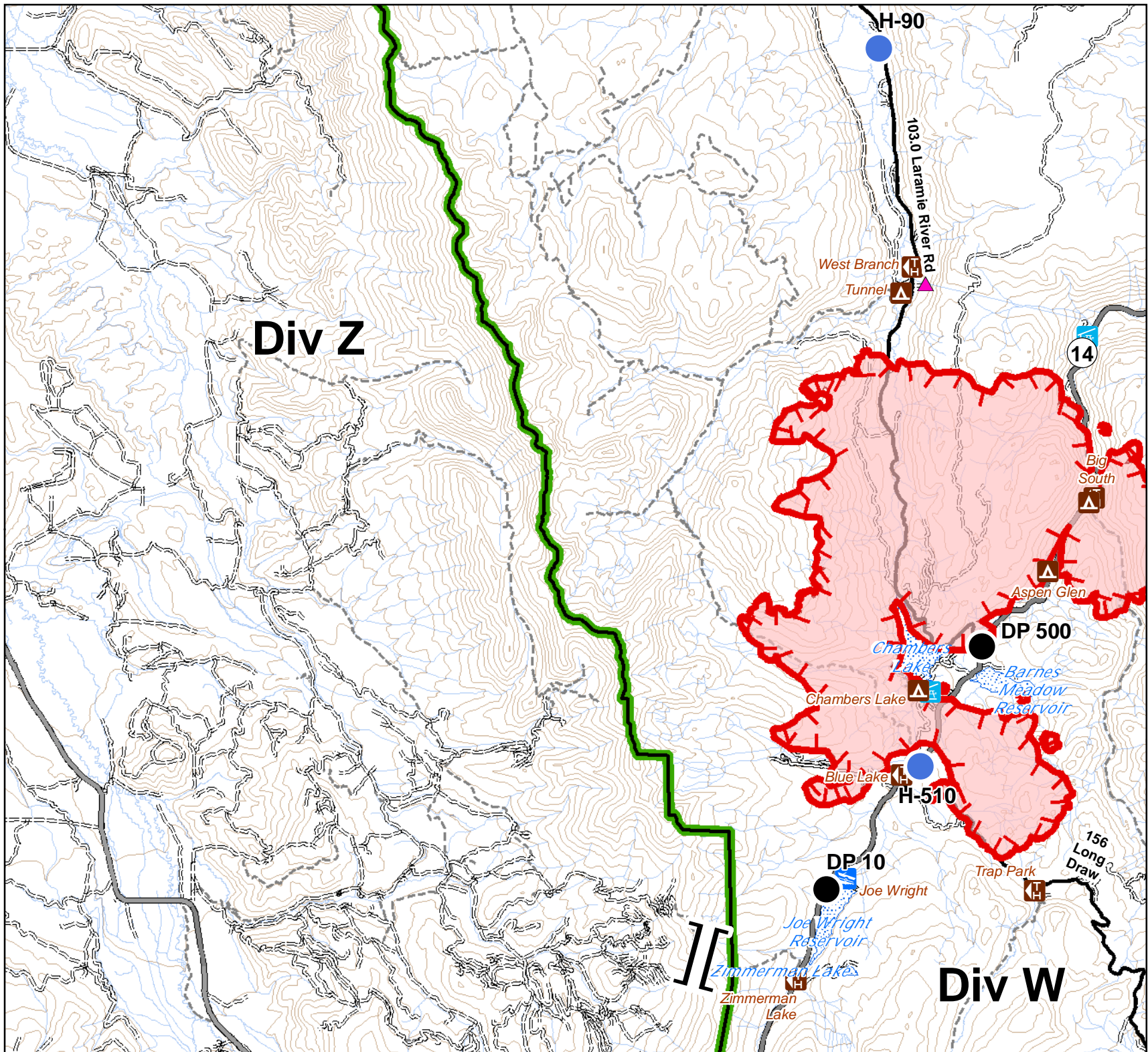
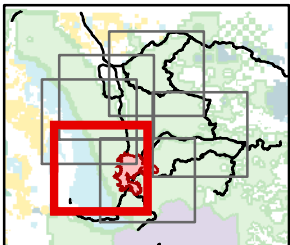
### Div Z South Branch II



- Critical Assets
- Water Access
- Campground
- Day Use Area
- Picnic Site
- Other Recreation Site
- Trailhead
- Camp
- Drop Point
- Helispot
- Division Break
- Branch Break

- Uncontrolled Fire Edge
- Proposed Dozer Line
- Fire Perimeter
- Closure Area
- Primary Routes
- Highway
- Local or 4WD road
- Trail
- Lakes
- Streams
- Fire History

S. Myers  
8/16/2020 2136  
UTM 13



# IAP

08/17/2020

## Cameron Peak

13,305 Acres  
as of 1848 08/16

## Div Z North Branch II



- Critical Assets
- Water Access
- Campground
- Day Use Area
- Picnic Site
- Other Recreation Site
- Trailhead
- Camp
- Drop Point
- Helispot
- Division Break
- Branch Break
- Uncontrolled Fire Edge
- Proposed Dozer Line
- Fire Perimeter
- Closure Area
- Primary Routes
- Highway
- Local or 4WD road
- Trail
- Lakes
- Streams
- Fire History

S. Myers  
8/16/2020 2136  
UTM 13

