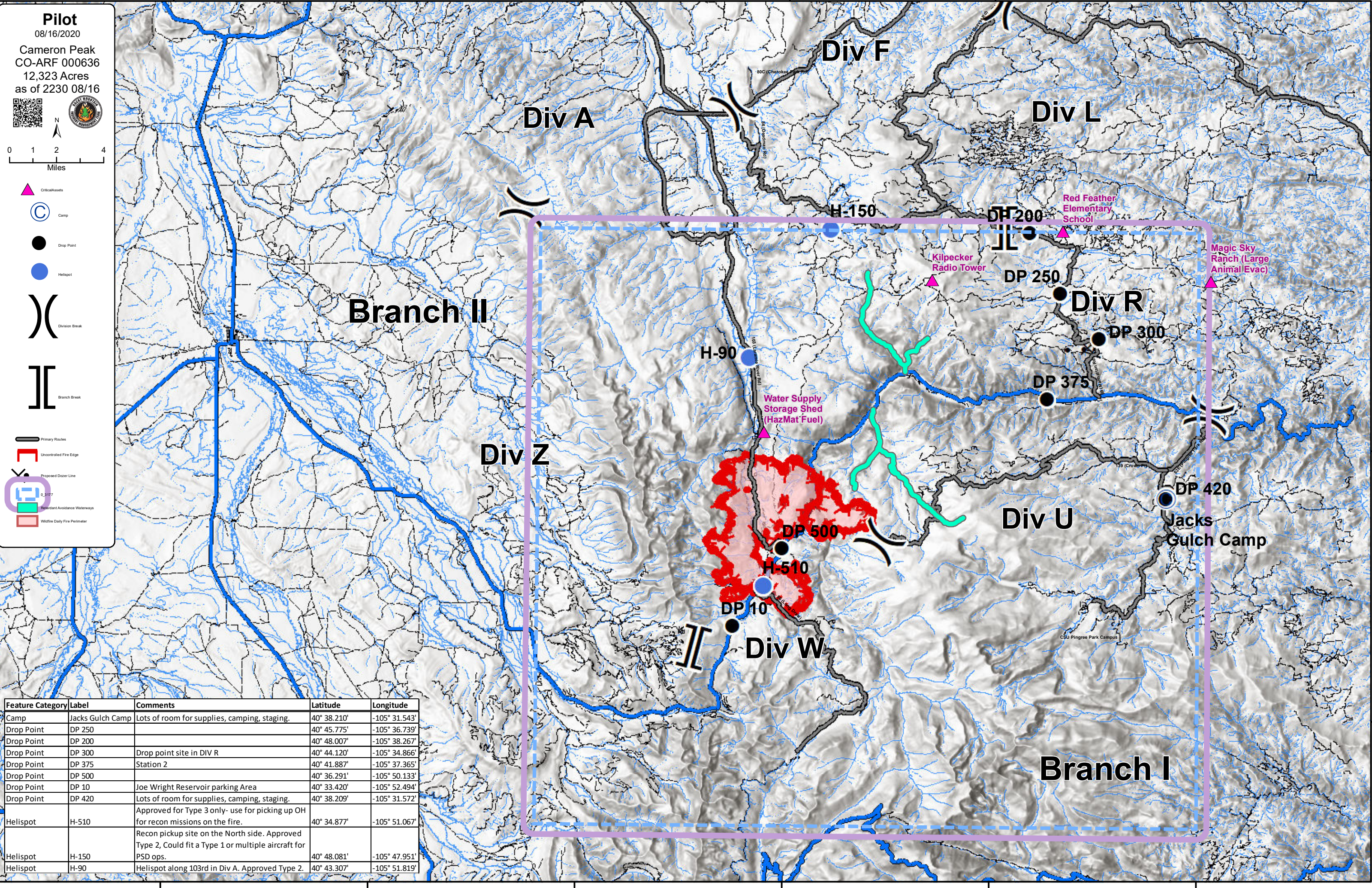


**Pilot**  
 08/16/2020  
 Cameron Peak  
 CO-ARF 000636  
 12,323 Acres  
 as of 2230 08/16



- Critical Assets
- Camp
- Drop Point
- Helispot
- Division Break
- Branch Break
- Primary Routes
- Uncontrolled Fire Edge
- Proposed Dazer Line
- Redundant Avoidance Waterways
- Wildlife Daily Fire Perimeter



Feature Category	Label	Comments	Latitude	Longitude
Camp	Jacks Gulch Camp	Lots of room for supplies, camping, staging.	40° 38.210'	-105° 31.543'
Drop Point	DP 250		40° 45.775'	-105° 36.739'
Drop Point	DP 200		40° 48.007'	-105° 38.267'
Drop Point	DP 300	Drop point site in DIV R	40° 44.120'	-105° 34.866'
Drop Point	DP 375	Station 2	40° 41.887'	-105° 37.365'
Drop Point	DP 500		40° 36.291'	-105° 50.133'
Drop Point	DP 10	Joe Wright Reservoir parking Area	40° 33.420'	-105° 52.494'
Drop Point	DP 420	Lots of room for supplies, camping, staging.	40° 38.209'	-105° 31.572'
Helispot	H-510	Approved for Type 3 only- use for picking up OH for recon missions on the fire.	40° 34.877'	-105° 51.067'
Helispot	H-150	Recon pickup site on the North side. Approved Type 2, Could fit a Type 1 or multiple aircraft for PSD ops.	40° 48.081'	-105° 47.951'
Helispot	H-90	Helispot along 103rd in Div A. Approved Type 2.	40° 43.307'	-105° 51.819'

106°20'W      106°10'W      106°0'W      105°50'W      105°40'W      105°30'W

40°50'N  
40°40'N  
40°30'N