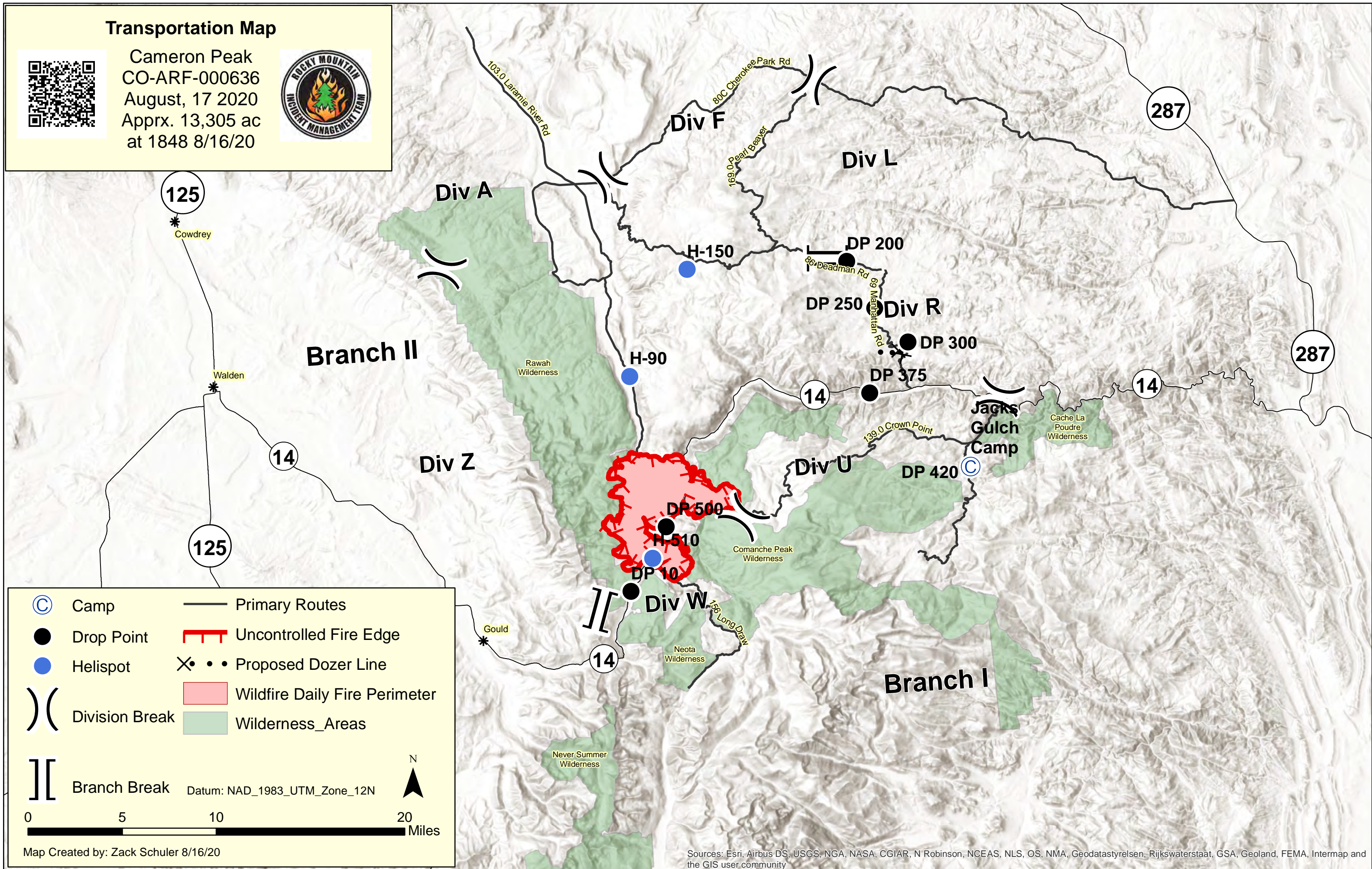


# Transportation Map

Cameron Peak  
 CO-ARF-000636  
 August, 17 2020  
 Apprx. 13,305 ac  
 at 1848 8/16/20



- Camp
- Drop Point
- Helispot
- Division Break
- Branch Break
- Uncontrolled Fire Edge
- Proposed Dozer Line
- Wildfire Daily Fire Perimeter
- Wilderness\_Areas

Datum: NAD\_1983\_UTM\_Zone\_12N

N

0 5 10 20 Miles

Map Created by: Zack Schuler 8/16/20

Sources: Esri, Airbus DS, USGS, NGA, NASA, CGIAR, N Robinson, NCEAS, NLS, OS, NMA, Geodastyrelsen, Rijkswaterstaat, GSA, Geoland, FEMA, Intermap and the GIS user community