

IAP Index

08/18/2020

Cameron Peak

CO-ARF 000636

12,323 Acres
as of 2230 08/16



N



0 1.5 3 6



Miles

) (Division Break

|| Branch Break

Fire Perimeter

Page Indicator

Closure Area

US Forest Service

Bureau of Land Management

Private

State Wildlife Areas

State

Bureau of Reclamation

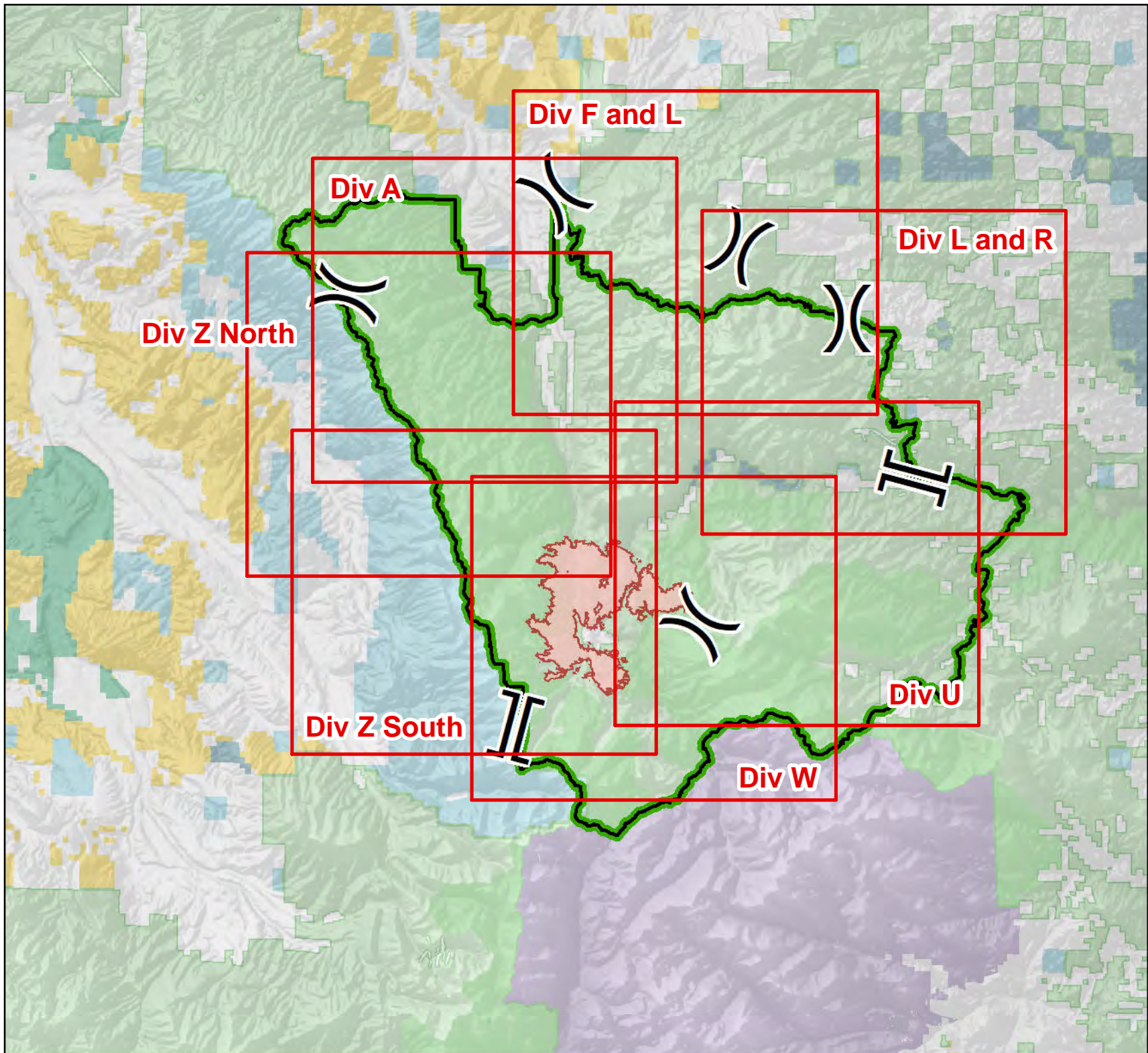
National Park Service

US Fish and Wildlife Service

Other Federal

USFS Wilderness

S. Myers
8/17/2020 2054
UTM 13



IAP

08/18/2020

Cameron Peak

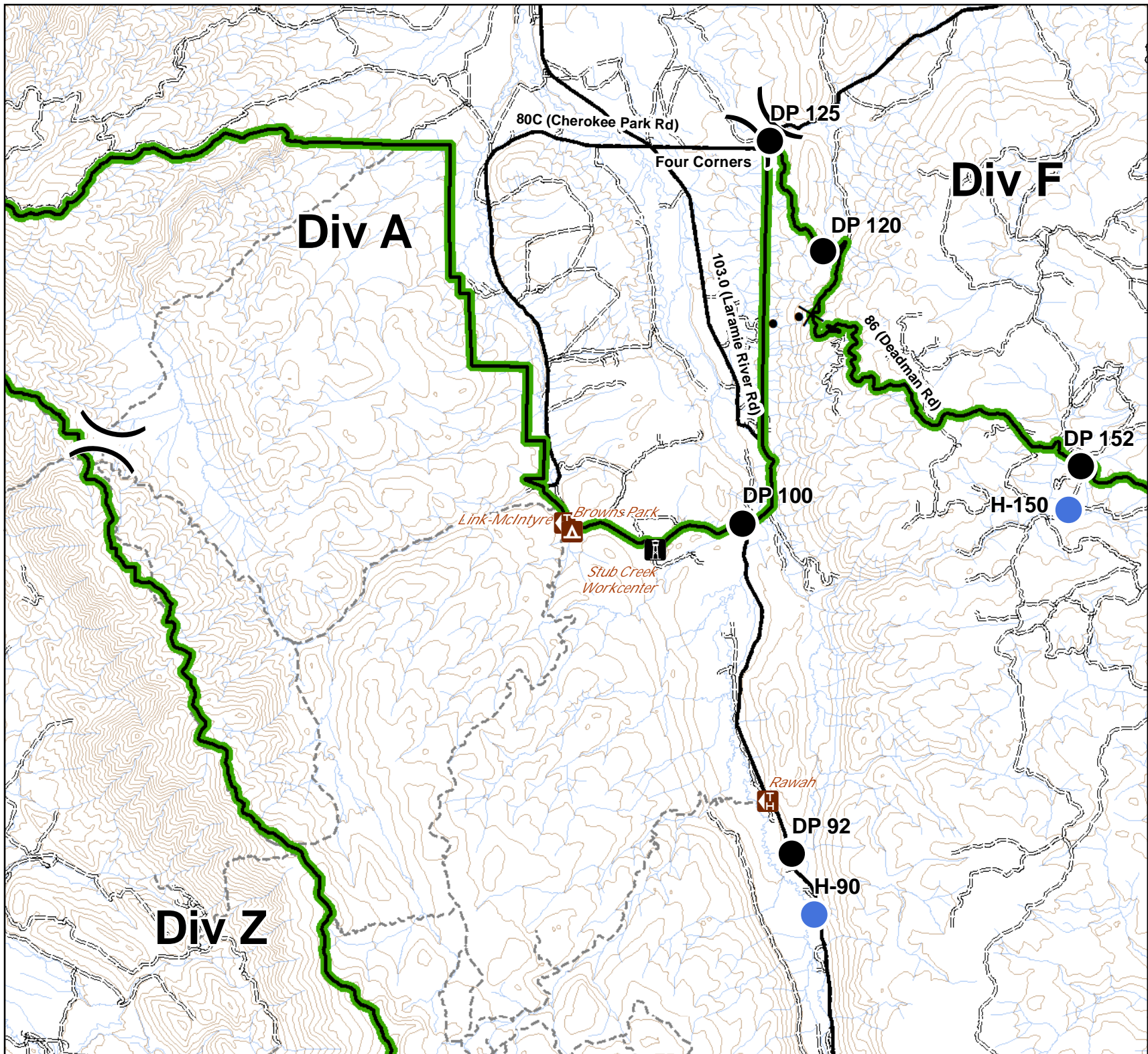
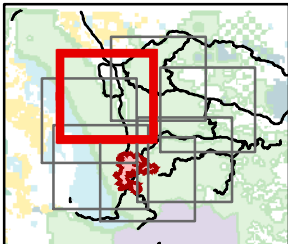
12,323 Acres
as of 2230 08/16

Div A Branch II



- Campground
- Other Recreation Site
- Trailhead
- Drop Point
- Helispot
- Division Break
- Proposed Dozer Line
- Closure Area
- Primary Routes
- Local or 4WD road
- Trail
- 600ft Retardant Avoidance Waterways
- Lakes
- Streams

S. Myers
8/17/2020 2044
UTM 13



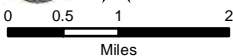
IAP

08/18/2020

Cameron Peak

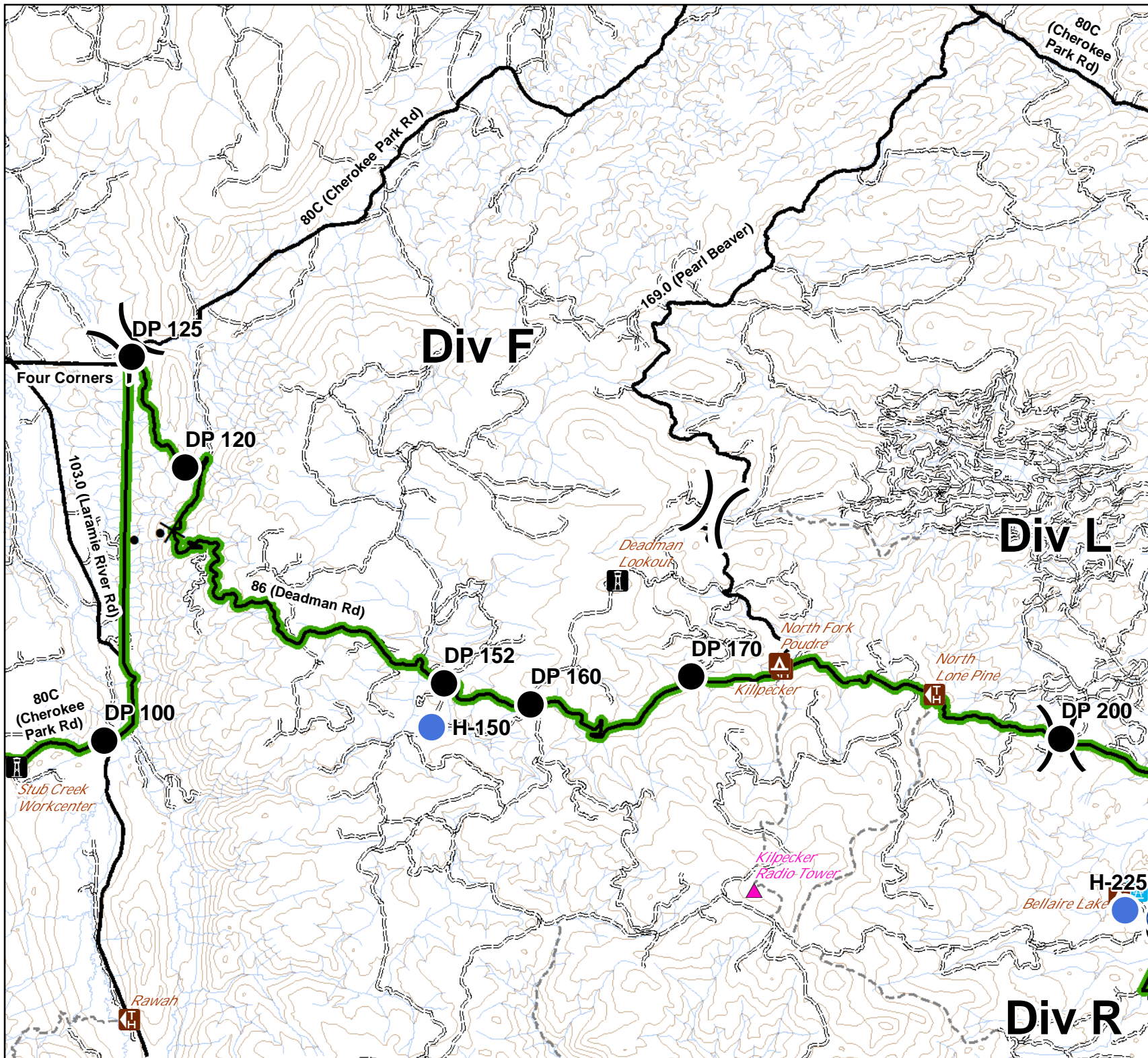
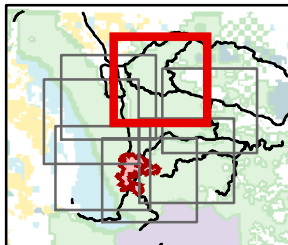
12,323 Acres
as of 2230 08/16

Div F and L Branch II



- Critical Assets
- Campground
- Picnic Site
- Other Recreation Site
- Trailhead
- Camp
- Drop Point
- Helispot
- Division Break
- Proposed Dozer Line
- Closure Area
- Primary Routes
- Local or 4WD road
- Trail
- 600ft Retardant Avoidance Waterways
- Lakes
- Streams

S. Myers
8/17/2020 2044
UTM 13



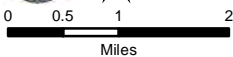
IAP

08/18/2020

Cameron Peak

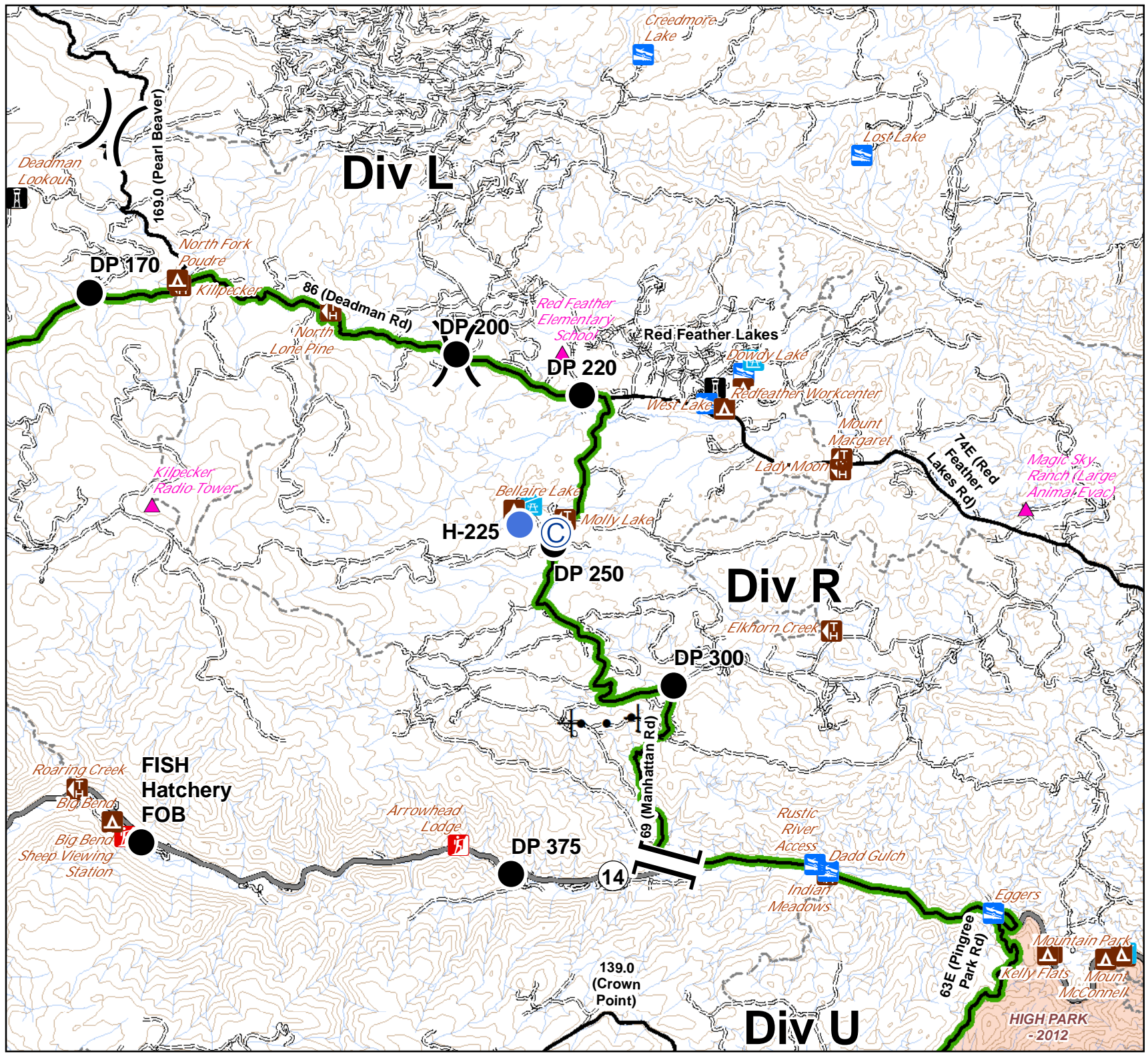
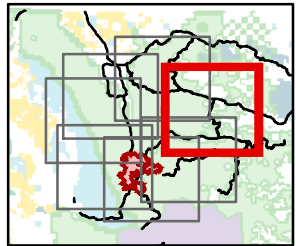
12,323 Acres
as of 2230 08/16

Div L and R Branch II



- Critical Assets
- Water Access
- Campground
- Day Use Area
- Picnic Site
- Other Recreation Site
- Trailhead
- Camp
- Drop Point
- Hellsport
- Division Break
- Branch Break
- Proposed Dozer Line
- Closure Area
- Primary Routes
- Highway
- Local or 4WD road
- Trail
- 600ft Retardant Avoidance Waterways
- Lakes
- Streams
- Fire History

S. Myers
8/17/2020 2045
UTM 13



IAP

08/18/2020

Cameron Peak

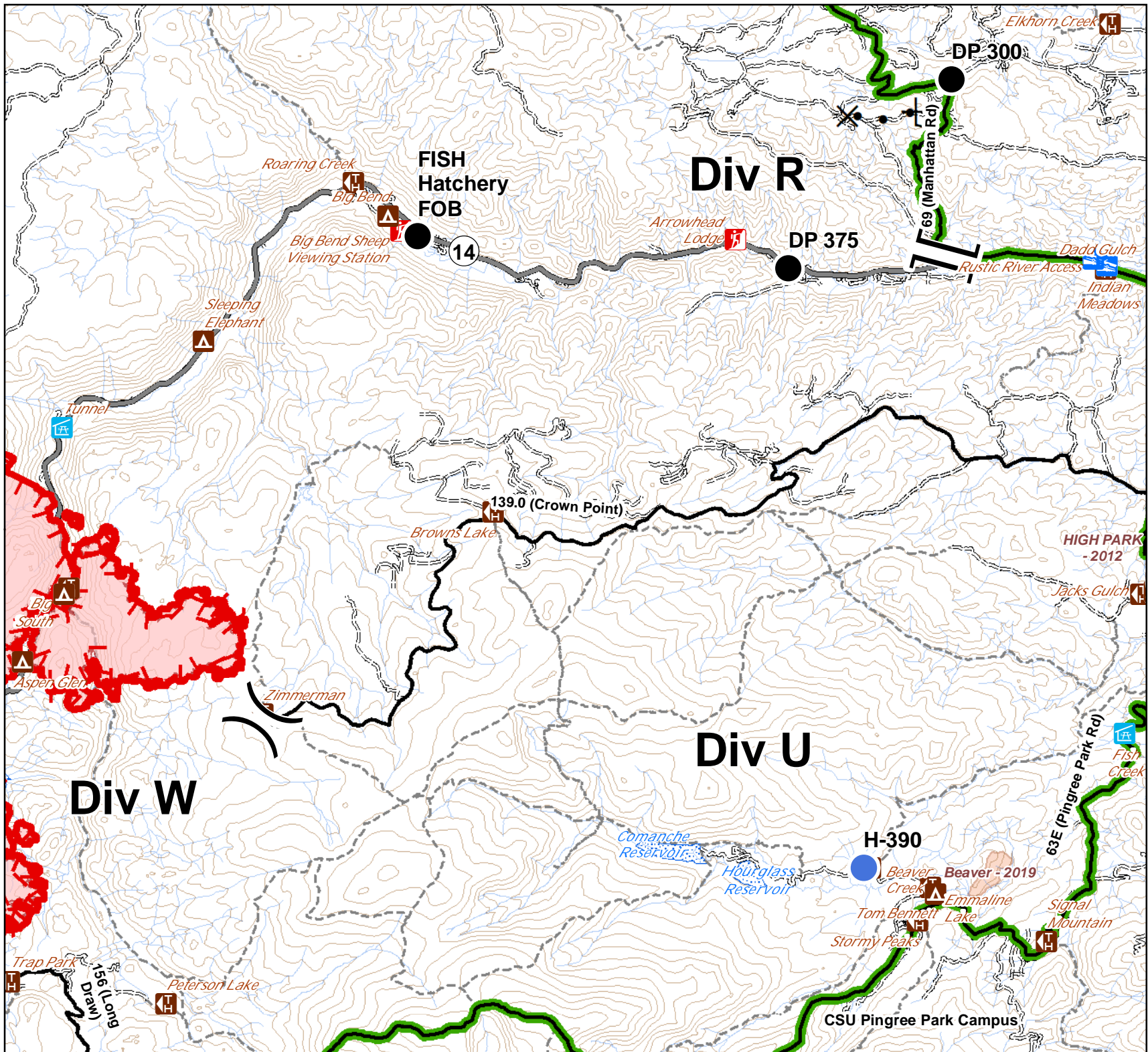
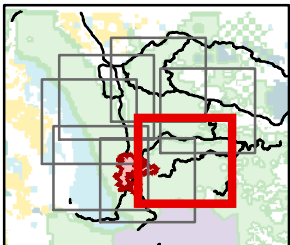
12,323 Acres
as of 2230 08/16

Div U Branch I



- Water Access
- Campground
- Day Use Area
- Picnic Site
- Trailhead
- Camp
- Drop Point
- Helispot
- Division Break
- Branch Break
- Uncontrolled Fire Edge
- Proposed Dozer Line
- Fire Perimeter
- Closure Area
- Primary Routes
- Highway
- Local or 4WD road
- Trail
- 600ft Retardant Avoidance Waterways
- Lakes
- Streams
- Fire History

S. Myers
8/17/2020 2045
UTM 13



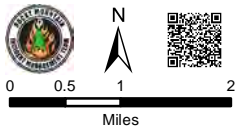
IAP

08/18/2020

Cameron Peak

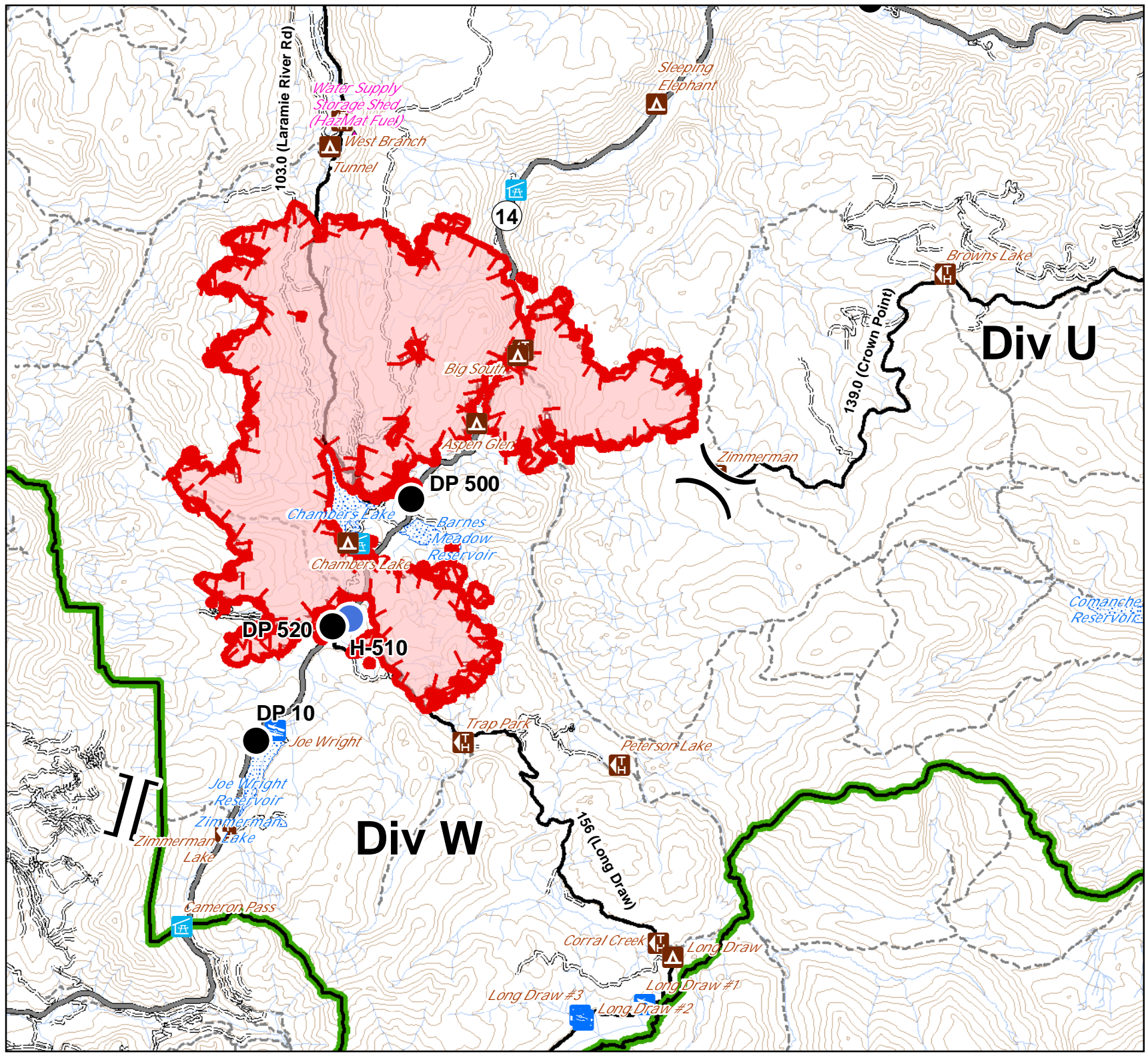
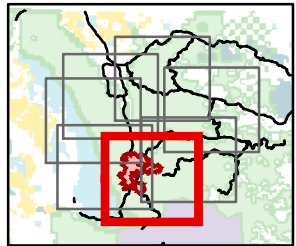
12,323 Acres
as of 2230 08/16

Div W Branch I



- Critical Assets
- Water Access
- Campground
- Picnic Site
- Trailhead
- Drop Point
- Helispot
- Division Break
- Branch Break
- Uncontrolled Fire Edge
- Fire Perimeter
- Closure Area
- Primary Routes
- Highway
- Local or 4WD road
- Trail
- 600ft Retardant Avoidance Waterways
- Lakes
- Streams

S. Myers
8/17/2020 2045
UTM 13



103.0 (Laramie River Rd)

Water Supply
Storage Shed,
(Hot/Mat Fuel)

West Branch
Tunnel

14

Sleeping
Elephant

Browns Lake

Div U

139.0 (Crown Point)

Big South

Aspen Glen

DP 500

Chamber's Lake

Barnes
Meadow
Reservoir

Chamber's Lake

DP 520

H-510

Zimmerman

Comanche
Reservoir

DP 10

Joe Wright

Trap Park

Peterson Lake

Div W

Joe Wright
Reservoir

Zimmerman's
Lake

Zimmerman
Lake

Cameron Pass

156 (Long Draw)

Corral Creek

Long Draw

Long Draw #3

Long Draw #2

Long Draw #1

IAP

08/18/2020

Cameron Peak

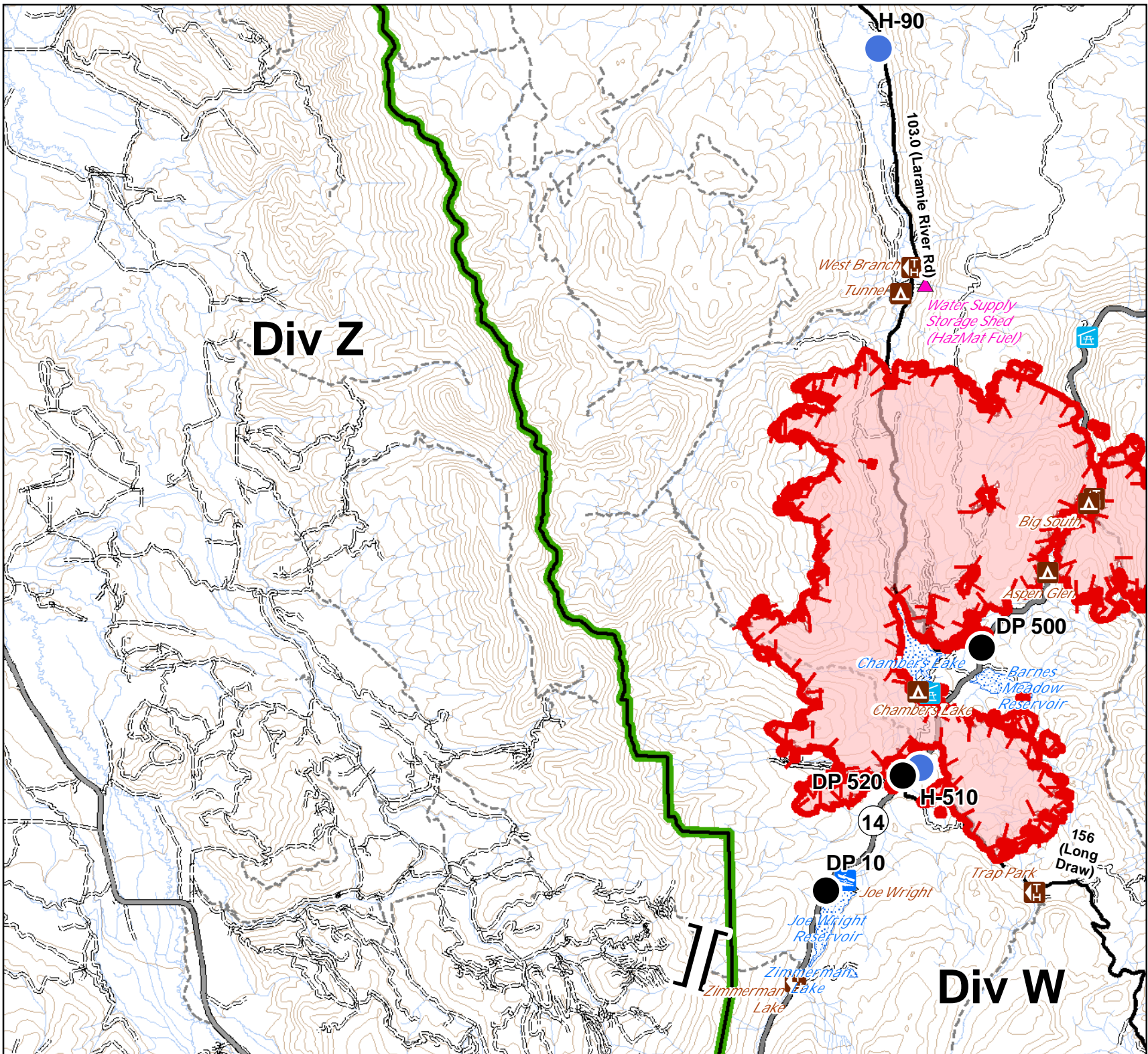
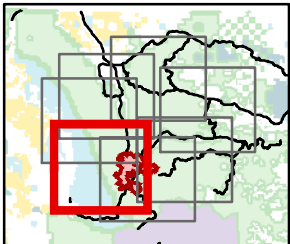
12,323 Acres
as of 2230 08/16

Div Z South Branch II



- Critical Assets
- Water Access
- Campground
- Picnic Site
- Trailhead
- Drop Point
- Helispot
- Branch Break
- Uncontrolled Fire Edge
- Fire Perimeter
- Closure Area
- Primary Routes
- Highway
- Local or 4WD road
- Trail
- 600ft Retardant Avoidance Waterways
- Lakes
- Streams

S. Myers
8/17/2020 2045
UTM 13



IAP

08/18/2020

Cameron Peak

12,323 Acres
as of 2230 08/16

Div Z North Branch II



- Critical Assets
- Campground
- Other Recreation Site
- Trailhead
- Drop Point
- Helispot
- Division Break
- Uncontrolled Fire Edge
- Fire Perimeter
- Closure Area
- Primary Routes
- Local or 4WD road
- Trail
- Lakes
- Streams

S. Myers
8/17/2020 2045
UTM 13

