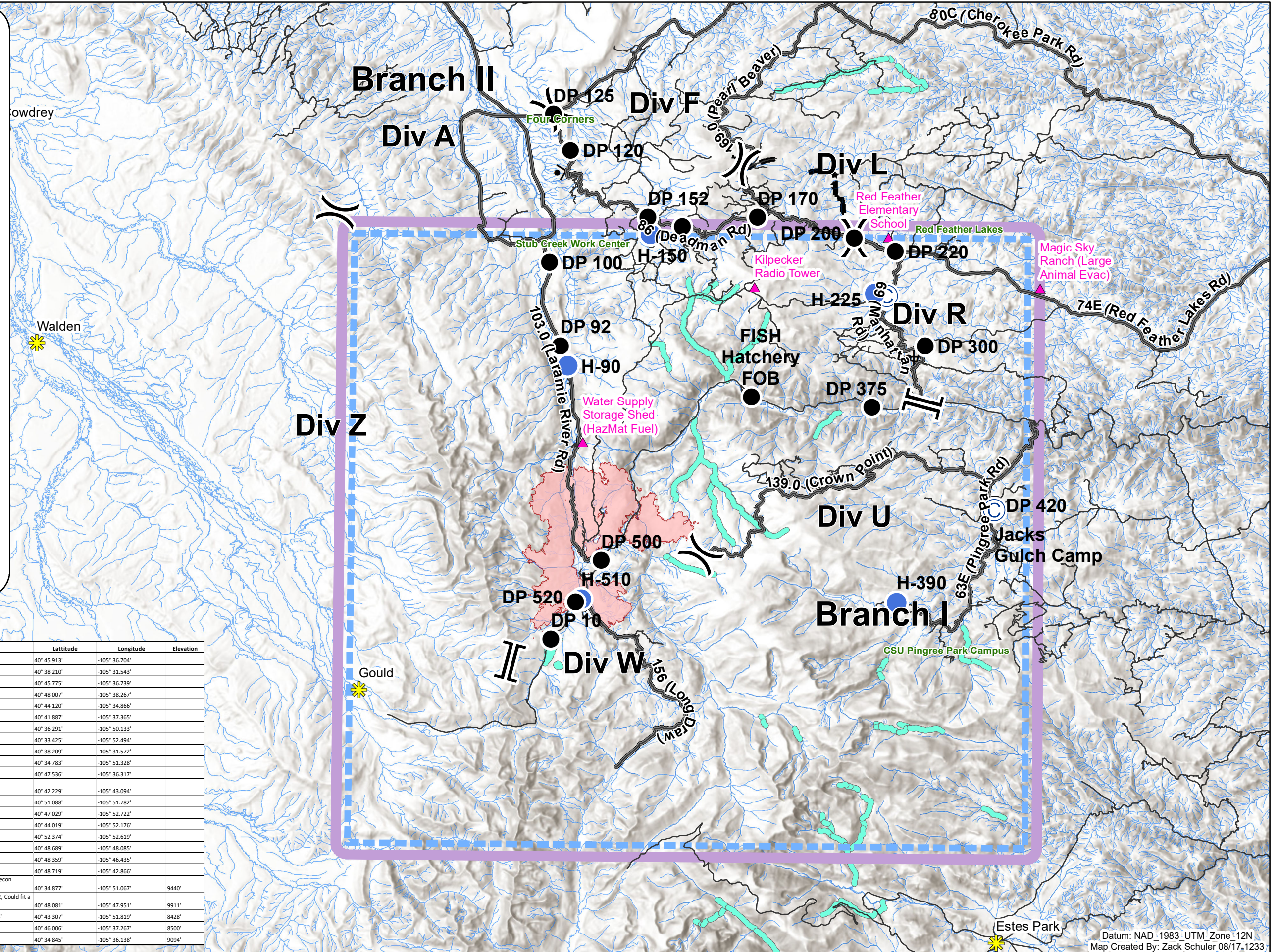


Pilot Map
 08/18/2020
 Cameron Peak
 CO-ARF-000636
 14,018 acres
 as of 2200 08/17



- City
- Camp
- Drop Point
- Helispot
- Division Break
- Branch Break
- Critical Assets
- Primary Routes
- Proposed Dozer Line
- Planned Fire Line
- Streams
- TFR 3177
- 600ft Retardant Avoidance Waterways
- Wildfire Daily Fire Perimeter



Feature Category	Label	Comments	Latitude	Longitude	Elevation
Camp	Jacks Gulch Camp	lots of room for supplies, camping, staging.	40° 38.210'	-105° 31.543'	
Drop Point	DP 250		40° 45.775'	-105° 36.739'	
Drop Point	DP 200		40° 48.007'	-105° 38.267'	
Drop Point	DP 300	Drop point site in DIV R	40° 44.120'	-105° 34.866'	
Drop Point	DP 375	Station 2	40° 41.887'	-105° 37.365'	
Drop Point	DP 500		40° 36.291'	-105° 50.133'	
Drop Point	DP 10	Joe Wright Reservoir parking Area	40° 33.425'	-105° 52.494'	
Drop Point	DP 420	Lots of room for supplies, camping, staging.	40° 38.209'	-105° 31.572'	
Drop Point	DP 520		40° 34.783'	-105° 51.328'	
Drop Point	DP 220	Per DIV L. Good spot to sent heavy equipment.	40° 47.536'	-105° 36.317'	
Drop Point	FISH Hatchery FOB	FISH Hatchery FOB - please label as such	40° 42.229'	-105° 43.094'	
Drop Point	DP 120	Possible FOB	40° 51.088'	-105° 51.782'	
Drop Point	DP 100		40° 47.029'	-105° 52.722'	
Drop Point	DP 92		40° 44.019'	-105° 52.176'	
Drop Point	DP 125		40° 52.374'	-105° 52.619'	
Drop Point	DP 152		40° 48.689'	-105° 48.085'	
Drop Point	DP 160		40° 48.359'	-105° 46.435'	
Drop Point	DP 170		40° 48.719'	-105° 42.866'	
Helispot	H-510	Approved for Type 3 only- use for picking up OH for recon missions on the fire. 9440'	40° 34.877'	-105° 51.067'	9440'
Helispot	H-150	Recon pickup site on the North side. Approved Type 2, Could fit a Type 1 or multiple aircraft for PSD ops. 9911'	40° 48.081'	-105° 47.951'	9911'
Helispot	H-90	Helispot along 103rd in Div A. Approved Type 2. 8428'	40° 43.307'	-105° 51.819'	8428'
Helispot	H-225	Type 3 only Elevation 8500'	40° 46.006'	-105° 37.267'	8500'
Helispot	H-390	Approved for Type 3 or Type 2. 9094'	40° 34.845'	-105° 36.138'	9094'

Datum: NAD_1983_UTM_Zone_12N
 Map Created By: Zack Schuler 08/17,1233