

# IAP Index

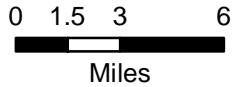
08/19/2020

## Cameron Peak

CO-ARF 000636

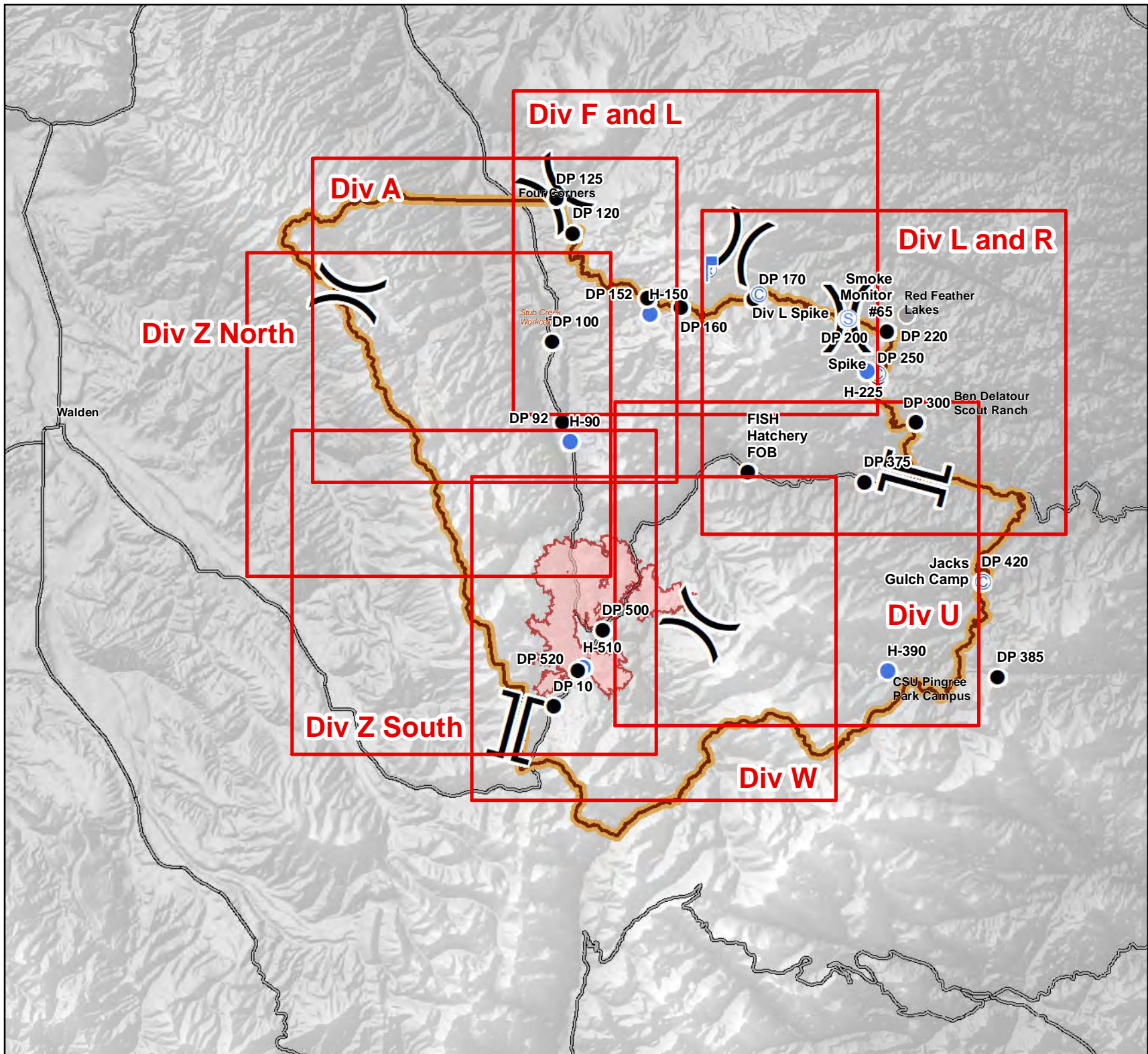
14,018 Acres

as of 2200 08/17



- Page Indicator
- Camp
- Drop Point
- Helibase
- Unimproved Landing Area
- Helispot
- Lookout
- Repeater
- Retardant in Avoidance Area
- Staging Area
- Water Source
- Unknown
- Other
- Division Break
- Branch Break
- Fire Perimeter
- Closure Area
- Major Roads

S. Myers  
8/18/2020 2106  
UTM 13



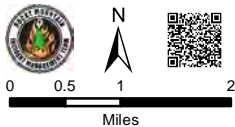
# IAP

08/19/2020

## Cameron Peak

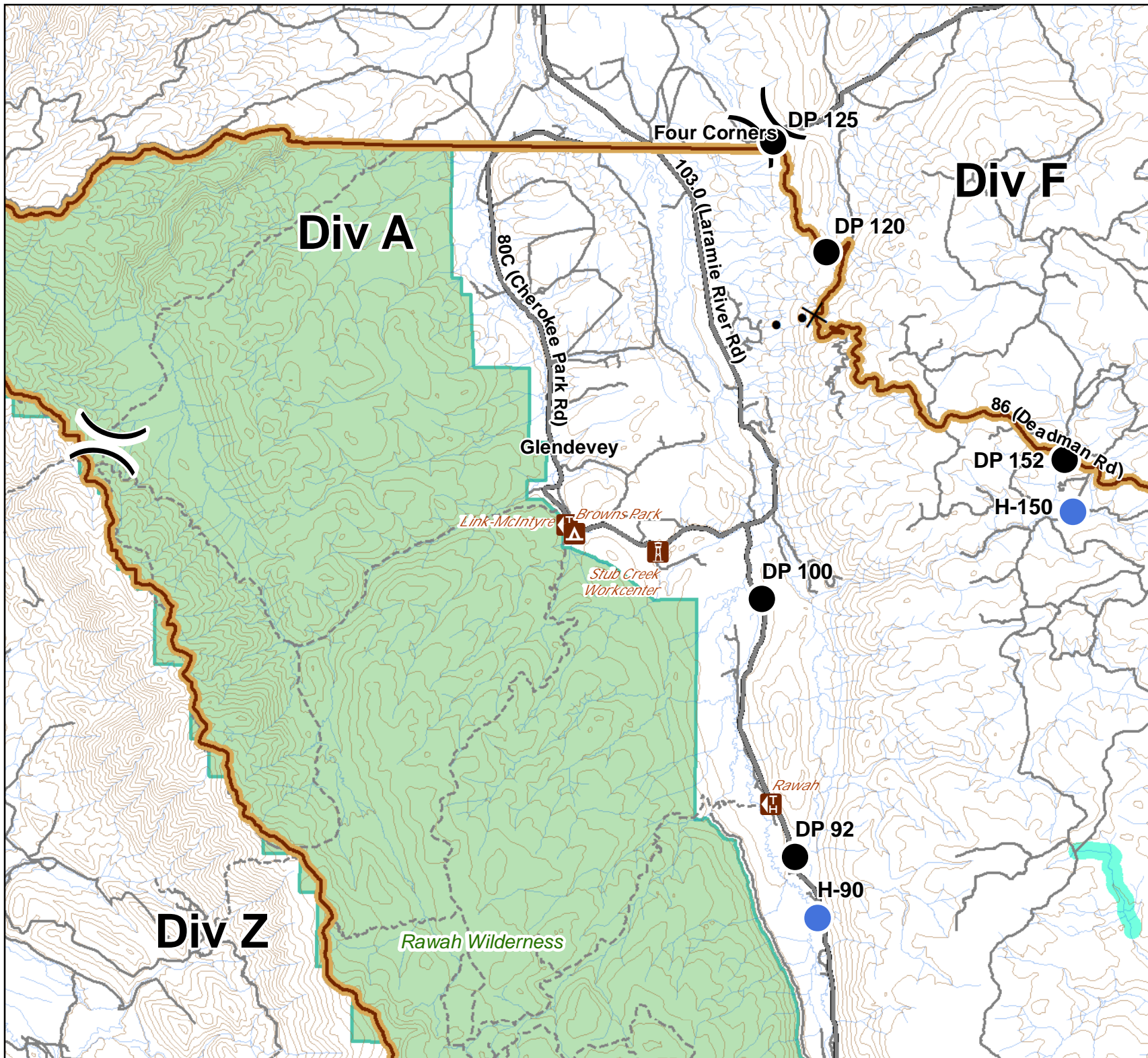
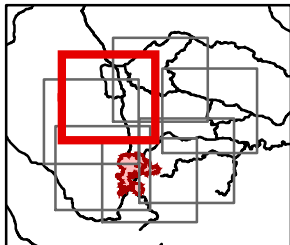
14,018 Acres  
as of 2200 08/17

### Div A Branch II



- Campground
- Other Recreation Site
- Trailhead
- Drop Point
- Hellspot
- Division Break
- Proposed Dozer Line
- Closure Area
- Primary Routes
- Trail
- 600ft Retardant Avoidance Waterways
- Wilderness Areas

S. Myers  
8/18/2020 2124  
UTM 13



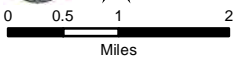
# IAP

08/19/2020

## Cameron Peak

14,018 Acres  
as of 2200 08/17

### Div F and L Branch II



- Critical Assets
- Campground
- Picnic Site
- Other Recreation Site
- Trailhead
- Camp
- Drop Point
- Helispot
- Lookout
- Repeater
- Staging Area
- Division Break

Completed Dozer Line

Road as Completed Line

Proposed Dozer Line

Planned Fire Line

Closure Area

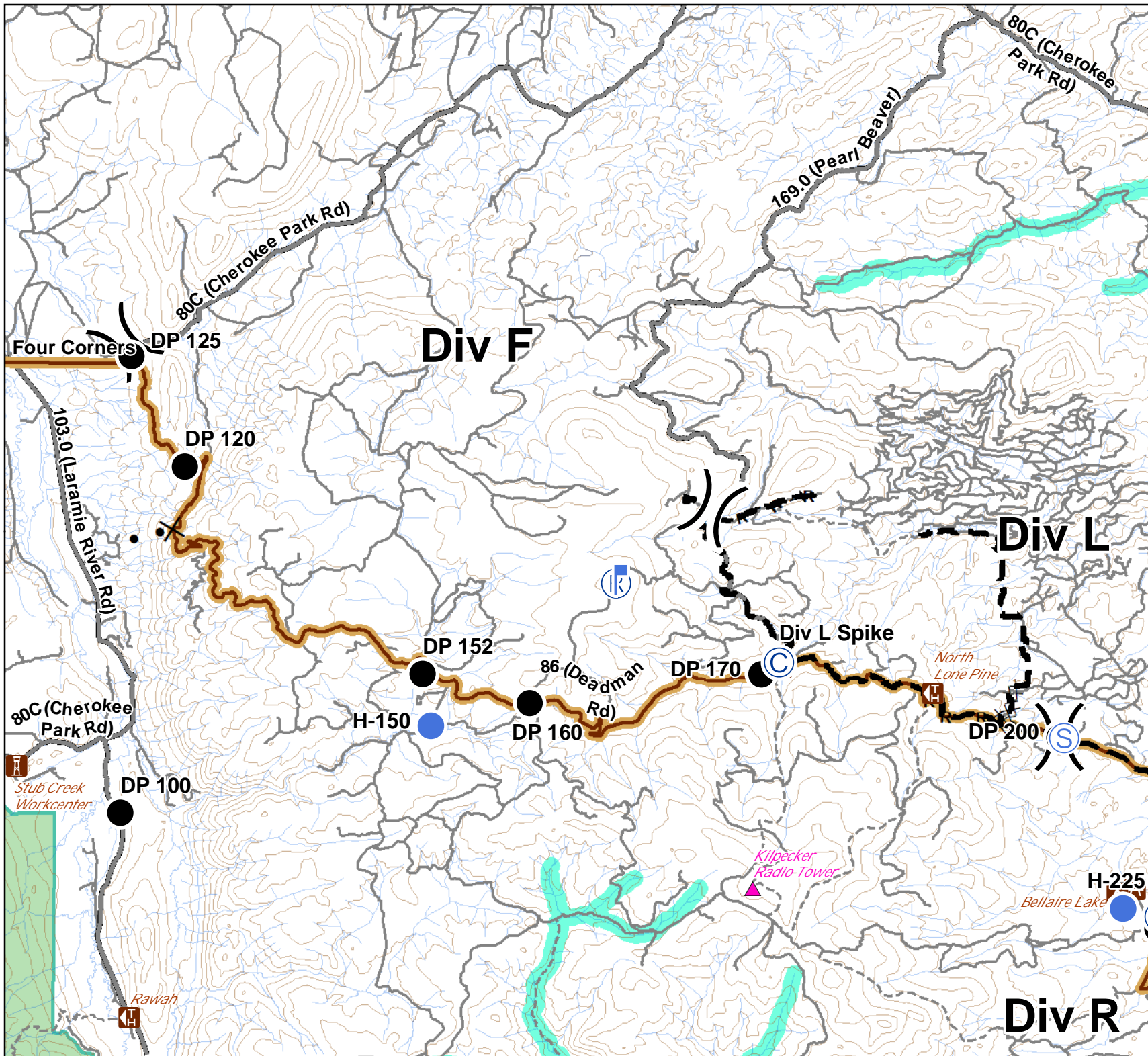
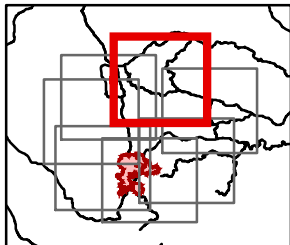
Primary Routes

Trail

600ft Retardant Avoidance Waterways

Wilderness Areas

S. Myers  
8/18/2020 2124  
UTM 13



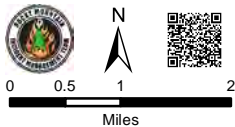
# IAP

08/19/2020

## Cameron Peak

14,018 Acres  
as of 2200 08/17

## Div L and R Branch II



- Critical Assets
- Water Access
- Campground
- Day Use Area
- Picnic Site
- Other Recreation Site
- Trailhead
- Camp
- Drop Point
- Helispot
- Lookout
- Repeater
- Staging Area
- Other
- Division Break
- Branch Break

XXXXXX Completed Dozer Line

R R Road as Completed Line

X X Proposed Dozer Line

Planned Fire Line

Closure Area

Primary Routes

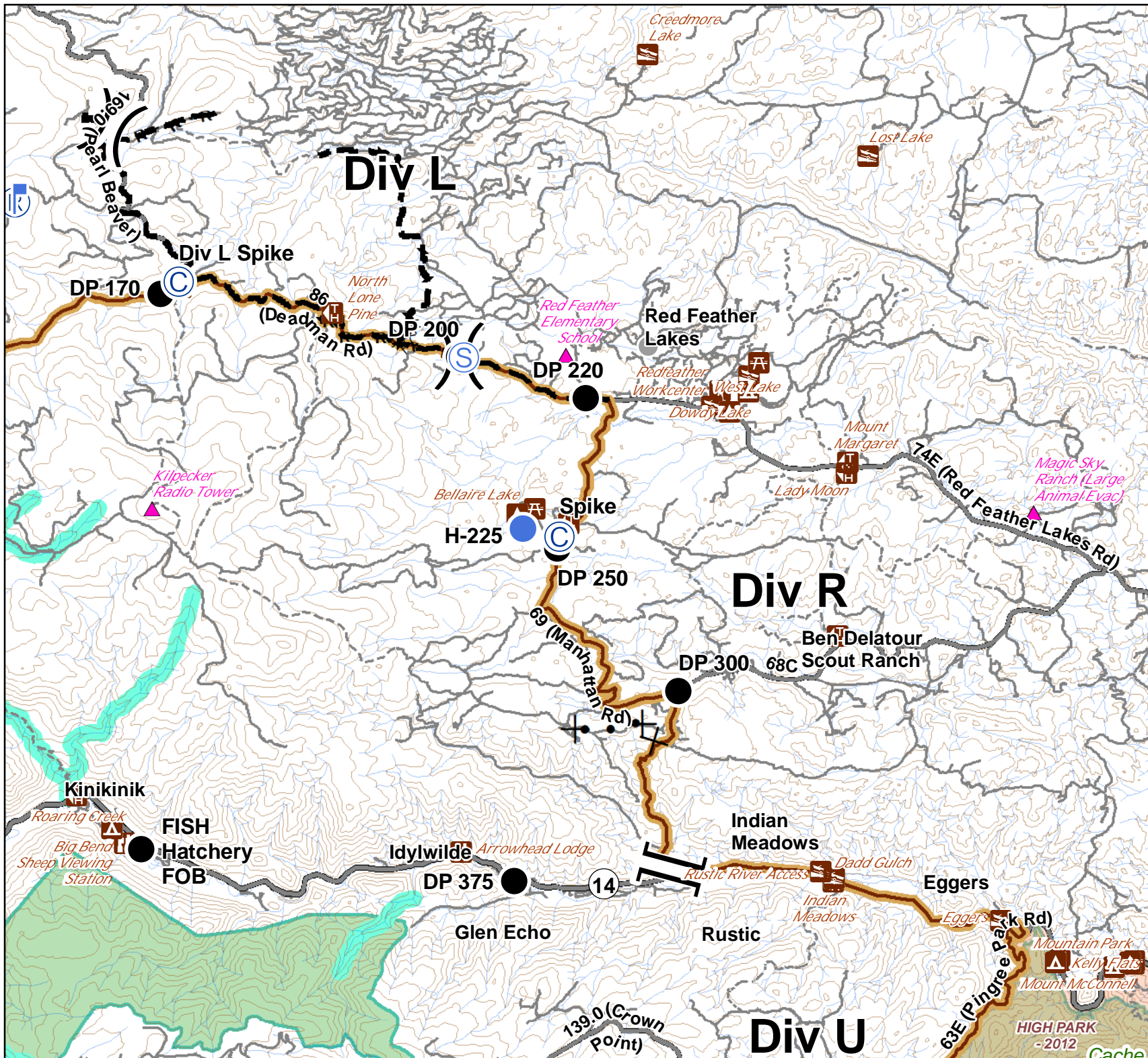
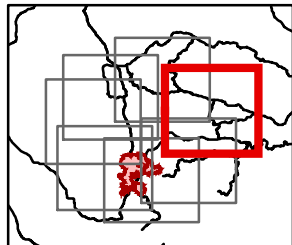
Trail

600ft Retardant Avoidance Waterways

Wilderness Areas

Fire History

S. Myers  
8/18/2020 2124  
UTM 13



IAP

08/19/2020

### Cameron Peak

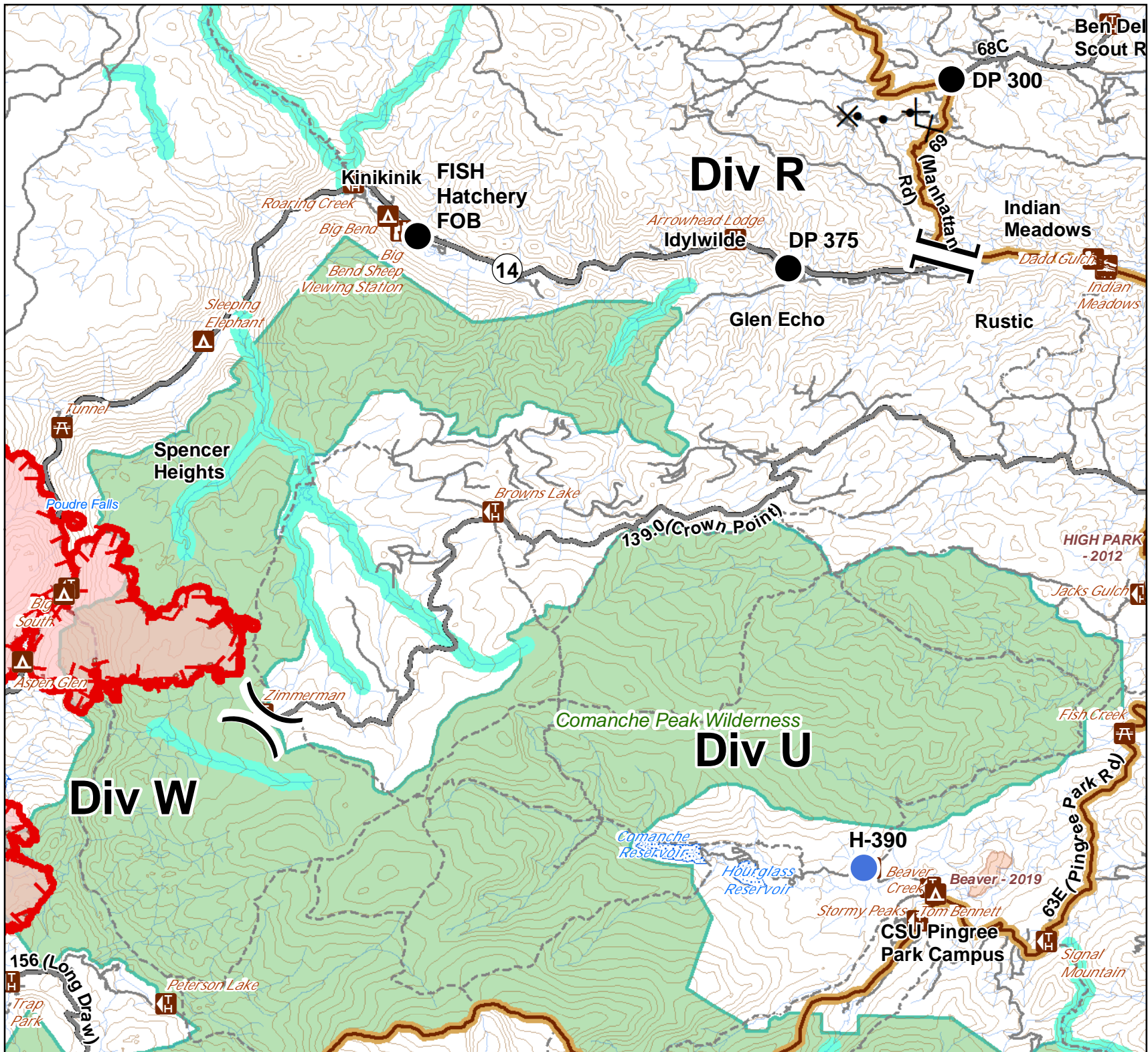
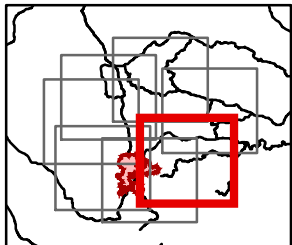
14,018 Acres  
as of 2200 08/17

### Div U Branch I



- Water Access
- Campground
- Day Use Area
- Picnic Site
- Trailhead
- Camp
- Drop Point
- Helispot
- Division Break
- Branch Break
- Uncontrolled Fire Edge
- Proposed Dozer Line
- Fire Perimeter
- Closure Area
- Primary Routes
- Trail
- 600ft Retardant Avoidance Waterways
- Wilderness Areas
- Fire History

S. Myers  
8/18/2020 2124  
UTM 13



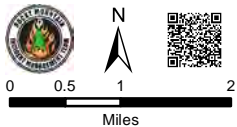
# IAP

08/19/2020

## Cameron Peak

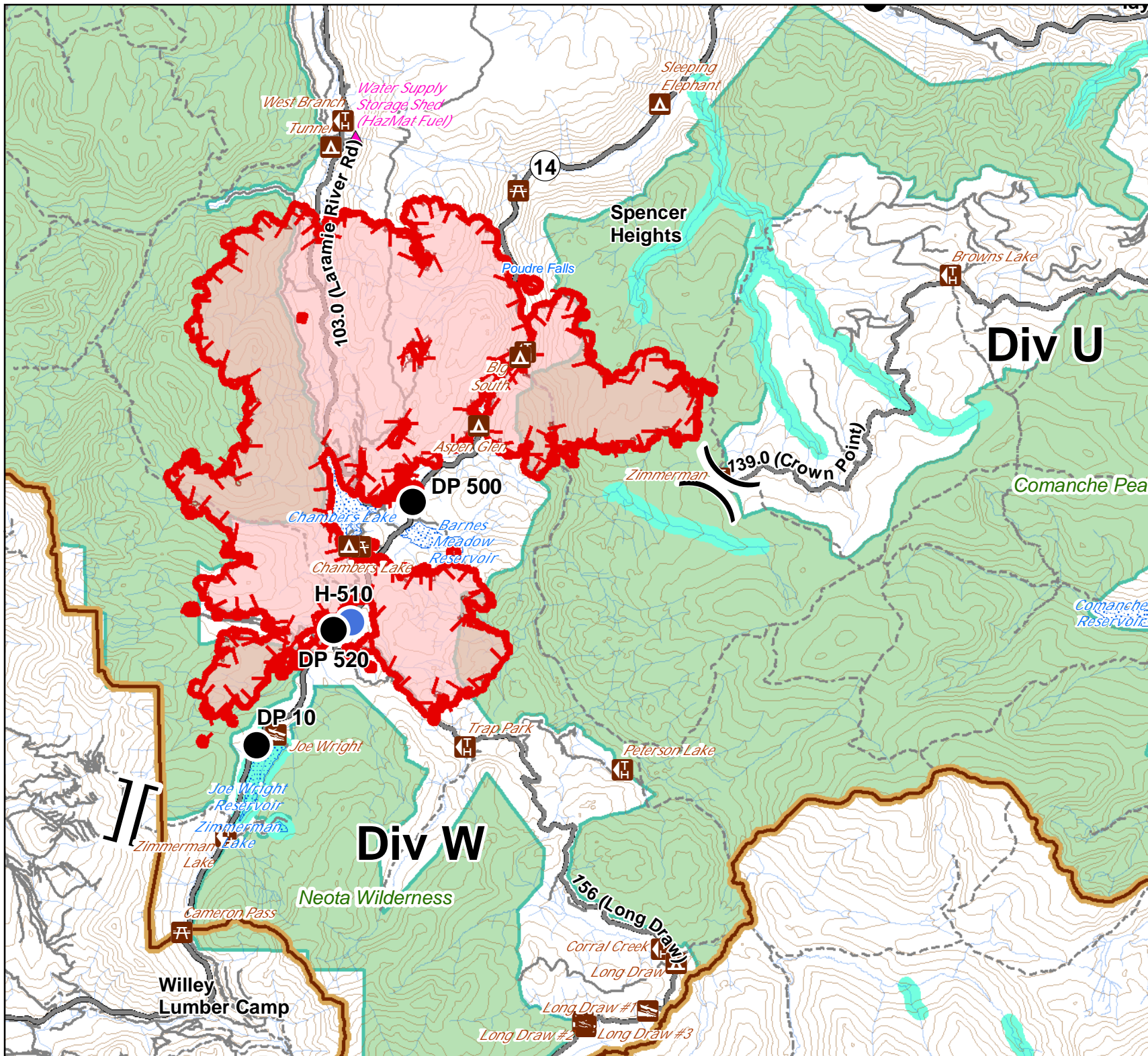
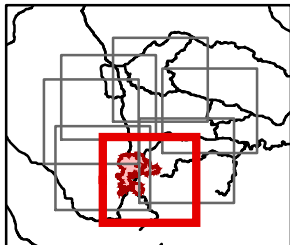
14,018 Acres  
as of 2200 08/17

### Div W Branch I



- Critical Assets
- Water Access
- Campground
- Picnic Site
- Trailhead
- Drop Point
- Hellsport
- Division Break
- Branch Break
- Uncontrolled Fire Edge
- Fire Perimeter
- Closure Area
- Primary Routes
- Trail
- 600ft Retardant Avoidance Waterways
- Wilderness Areas

S. Myers  
8/18/2020 2124  
UTM 13



IAP

08/19/2020

### Cameron Peak

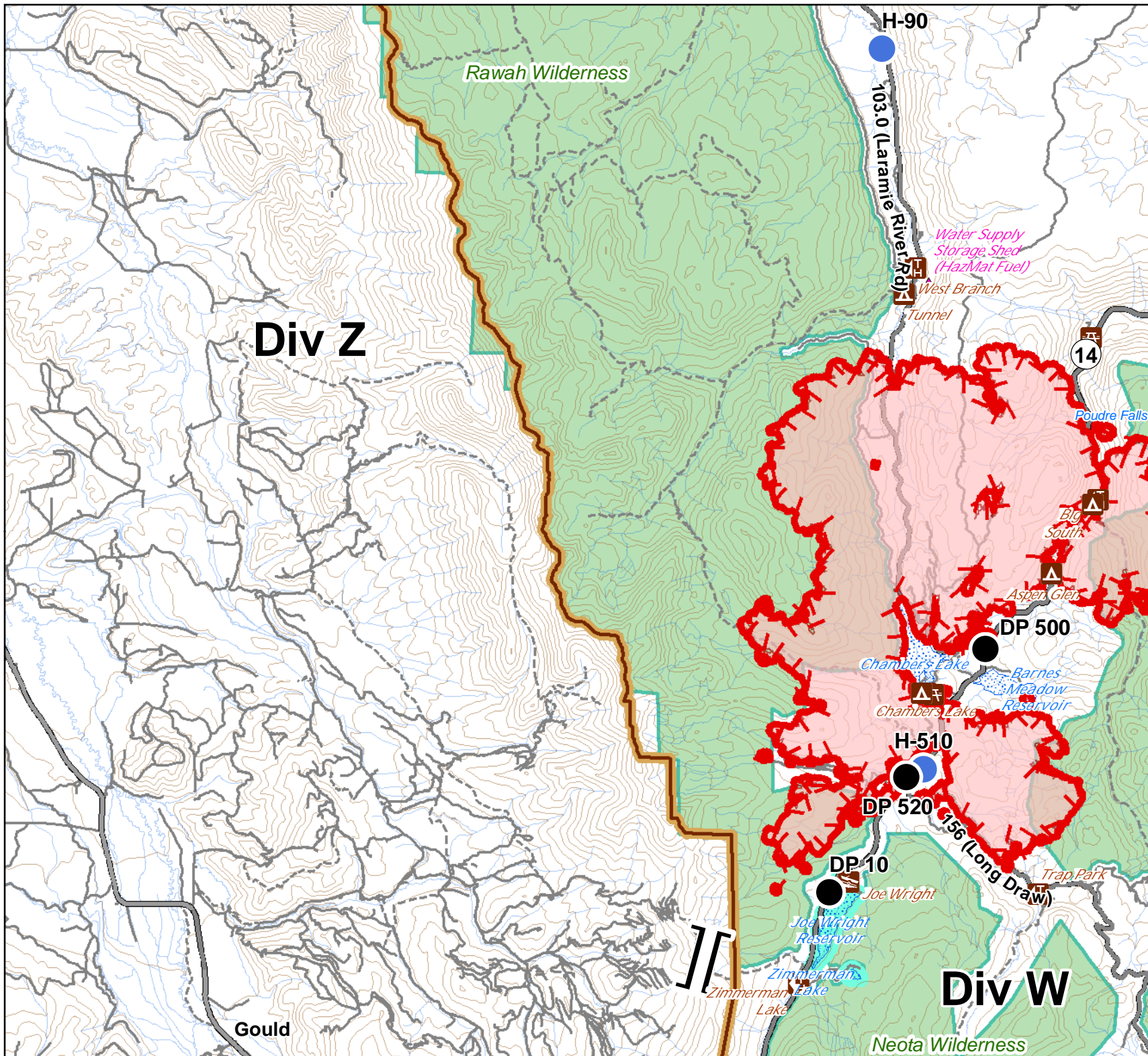
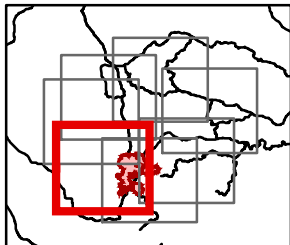
14,018 Acres  
as of 2200 08/17

### Div Z South Branch II



- Critical Assets
- Water Access
- Campground
- Picnic Site
- Trailhead
- Drop Point
- Hellsport
- Branch Break
- Uncontrolled Fire Edge
- Fire Perimeter
- Closure Area
- Primary Routes
- Trail
- 600ft Retardant Avoidance Waterways
- Wilderness Areas

S. Myers  
8/18/2020 2125  
UTM 13



# Div Z

# Div W

Gould

Neota Wilderness

Rawah Wilderness

H-90

103.0 (Laramie River Rd)

Water Supply  
Storage Shed  
(HazMat Fuel)

West Branch  
Tunnel

14

Poudre Falls

Big  
South

Aspen Glen

DP 500

Chamber's Lake

Chamber's Lake

Barnes  
Meadow  
Reservoir

H-510

DP 520

156 (Long Draw)

DP 10

Joe Wright

Joe Wright  
Reservoir

Zimmerman  
Lake

Trap Park

IAP

08/19/2020

### Cameron Peak

14,018 Acres  
as of 2200 08/17

### Div Z North Branch II



Miles

- Critical Assets
- Campground
- Other Recreation Site
- Trailhead
- Drop Point
- Helispot
- Division Break

- Uncontrolled Fire Edge
- Fire Perimeter
- Closure Area
- Primary Routes
- Trail
- Wilderness Areas

S. Myers  
8/18/2020 2125  
UTM 13

