

# IAP Index

08/20/2020

## Cameron Peak

CO-ARF 000636

15,738 Acres

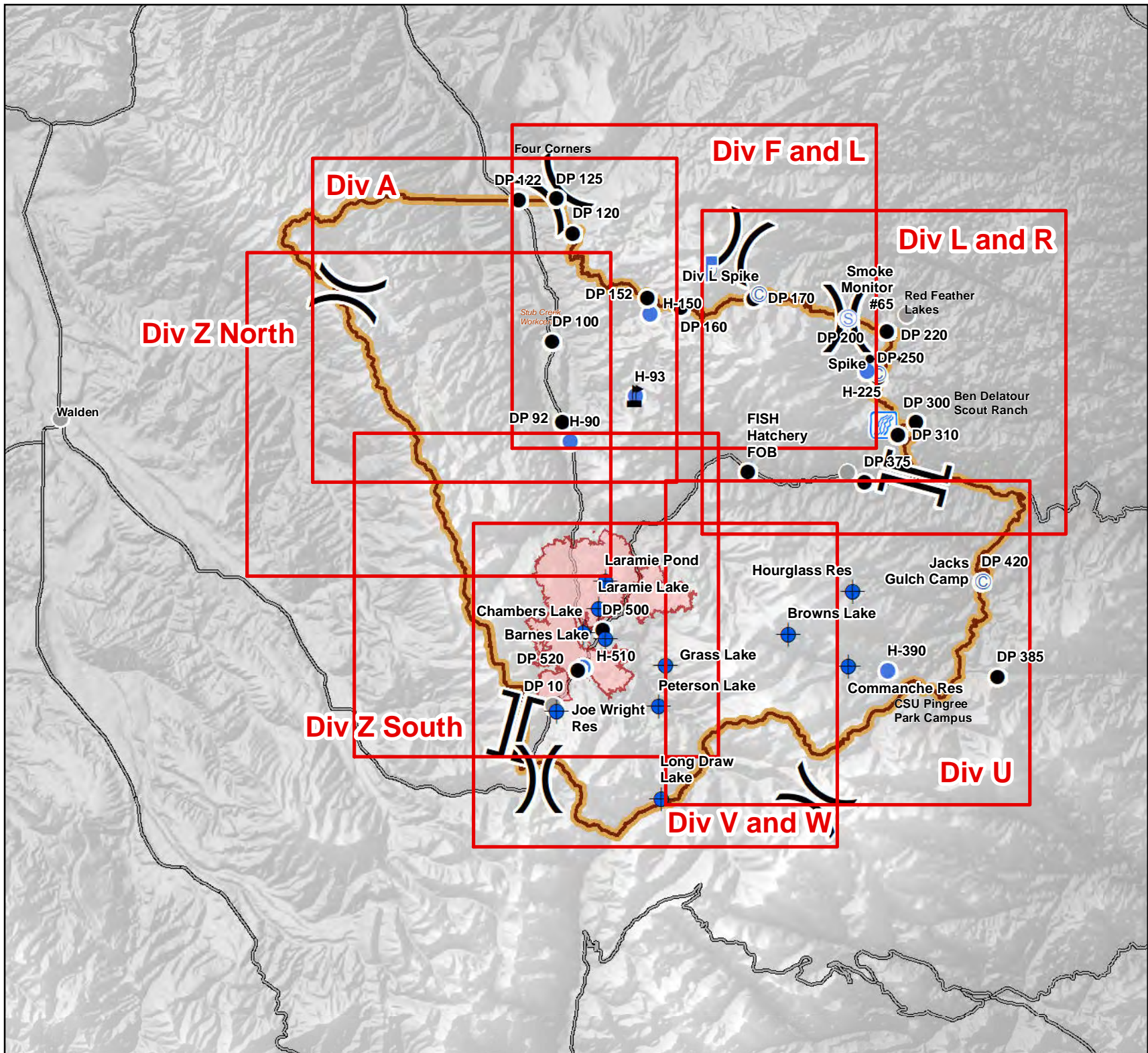
as of 0036 08/19



0 1.5 3 6  
Miles

Page Indicator

- Ⓒ Camp
- ⊕ Dip Site
- Drop Point
- Gate
- Helispot
- 🚒 Lookout
- Ⓔ Repeater
- Ⓔ Staging Area
- 🌊 Stream Crossing
- 🚒 Value at Risk
- Other
- ) ( Division Break
- ] [ Branch Break
- 🔴 Fire Perimeter
- 🟡 Closure Area
- Major Roads



S. Myers  
8/19/2020 2245  
UTM 13



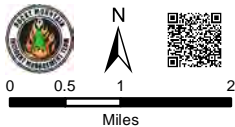
# IAP

08/20/2020

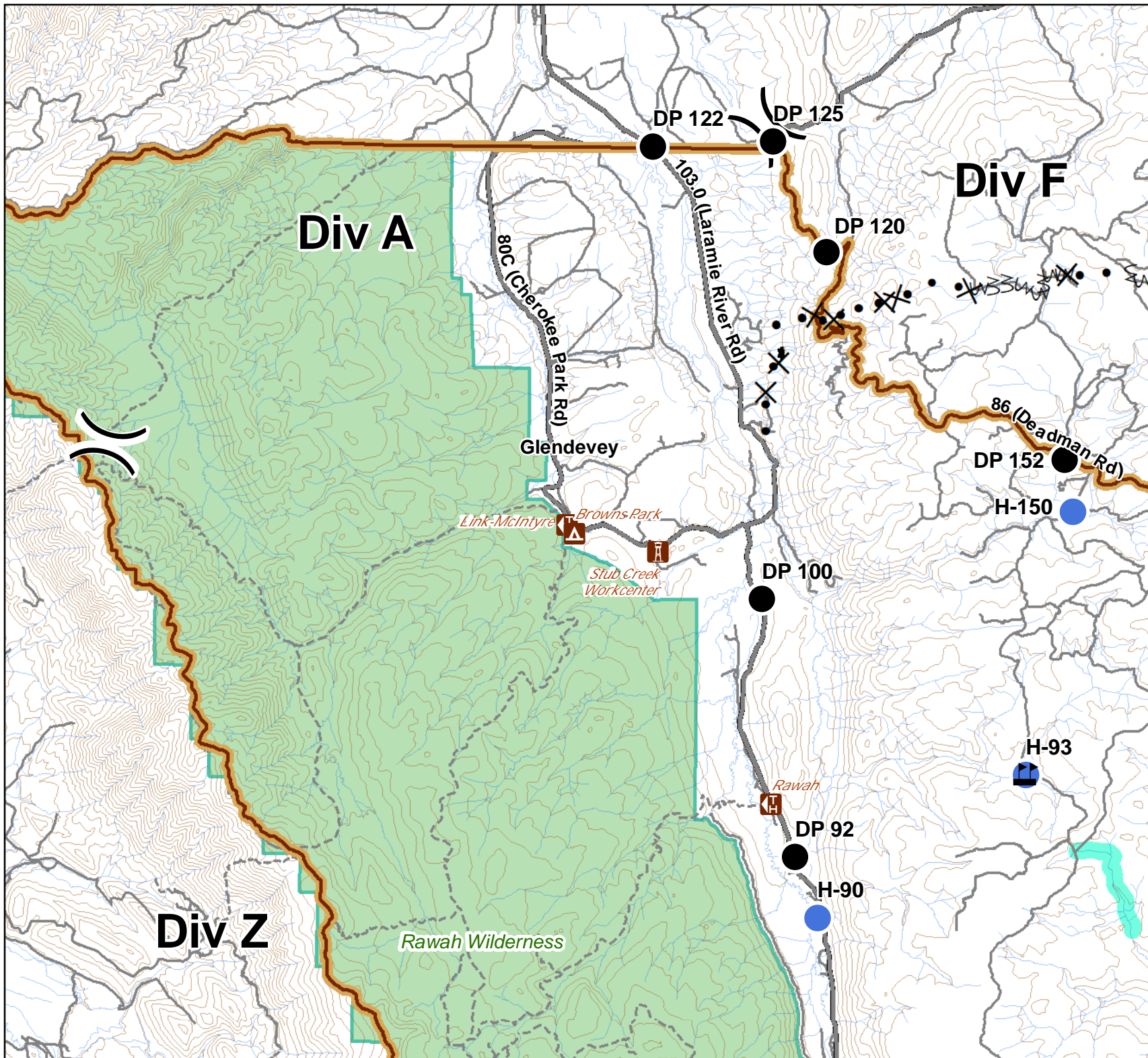
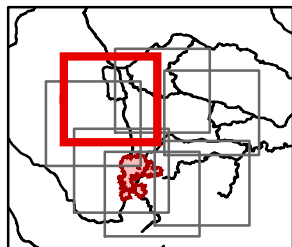
## Cameron Peak

15,738 Acres  
as of 0036 08/19

### Div A Branch II



- Campground
- Other Recreation Site
- Trailhead
- Drop Point
- Helispot
- Value at Risk
- Division Break
- Proposed Dozer Line
- Fire Break Planned or Incomplete
- Planned Fire Line
- Closure Area
- Primary Routes
- Trail
- 600ft Retardant Avoidance Waterways
- Wilderness Areas



# IAP

08/20/2020

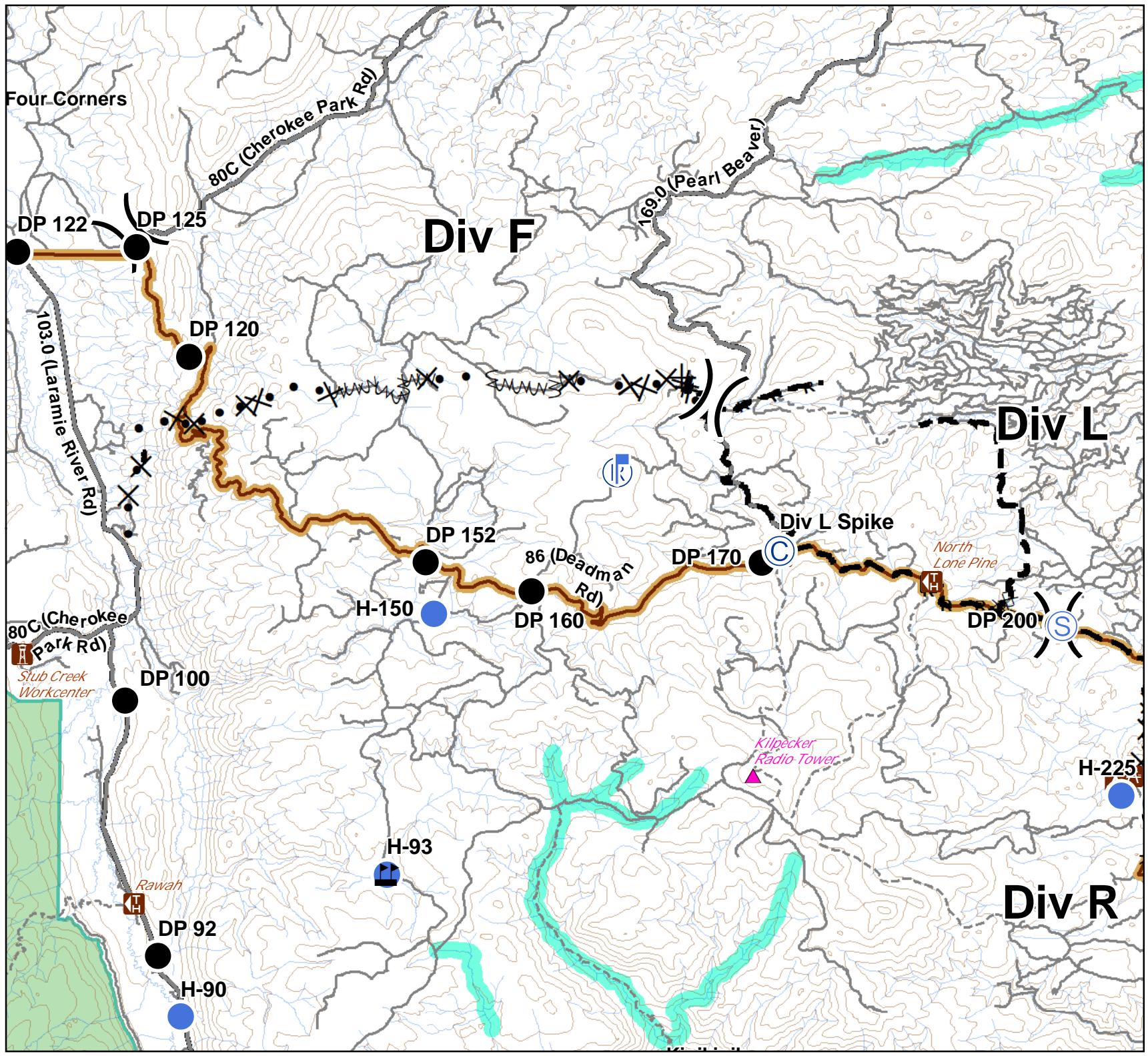
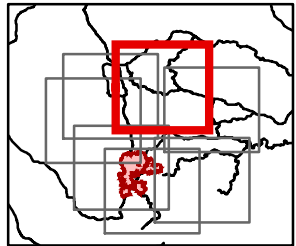
## Cameron Peak

15,738 Acres  
as of 0036 08/19

## Div F and L Branch II



- Critical Assets
- Campground
- Picnic Site
- Other Recreation Site
- Trailhead
- Camp
- Drop Point
- Gate
- Helispot
- Lookout
- Repeater
- Staging Area
- Stream Crossing
- Value at Risk
- Division Break
- Completed Dozer Line
- R R Road as Completed Line
- X X Proposed Dozer Line
- Fire Break Planned or Incomplete
- Planned Fire Line
- Closure Area
- Primary Routes
- Trail
- 600ft Retardant Avoidance Waterways
- Wilderness Areas





# IAP

08/20/2020

## Cameron Peak

15,738 Acres  
as of 0036 08/19

## Div L and R Branch II



- Critical Assets
- Water Access
- Campground
- Day Use Area
- Picnic Site
- Other Recreation Site
- Trailhead
- Camp
- Drop Point
- Gate
- Helispot
- Lookout
- Repeater
- Staging Area
- Stream Crossing
- Other
- Division Break
- Branch Break

XXXXXX Completed Dozer Line

R R Road as Completed Line

X X Proposed Dozer Line

▬▬▬▬ Planned Fire Line

▬▬▬▬ Closure Area

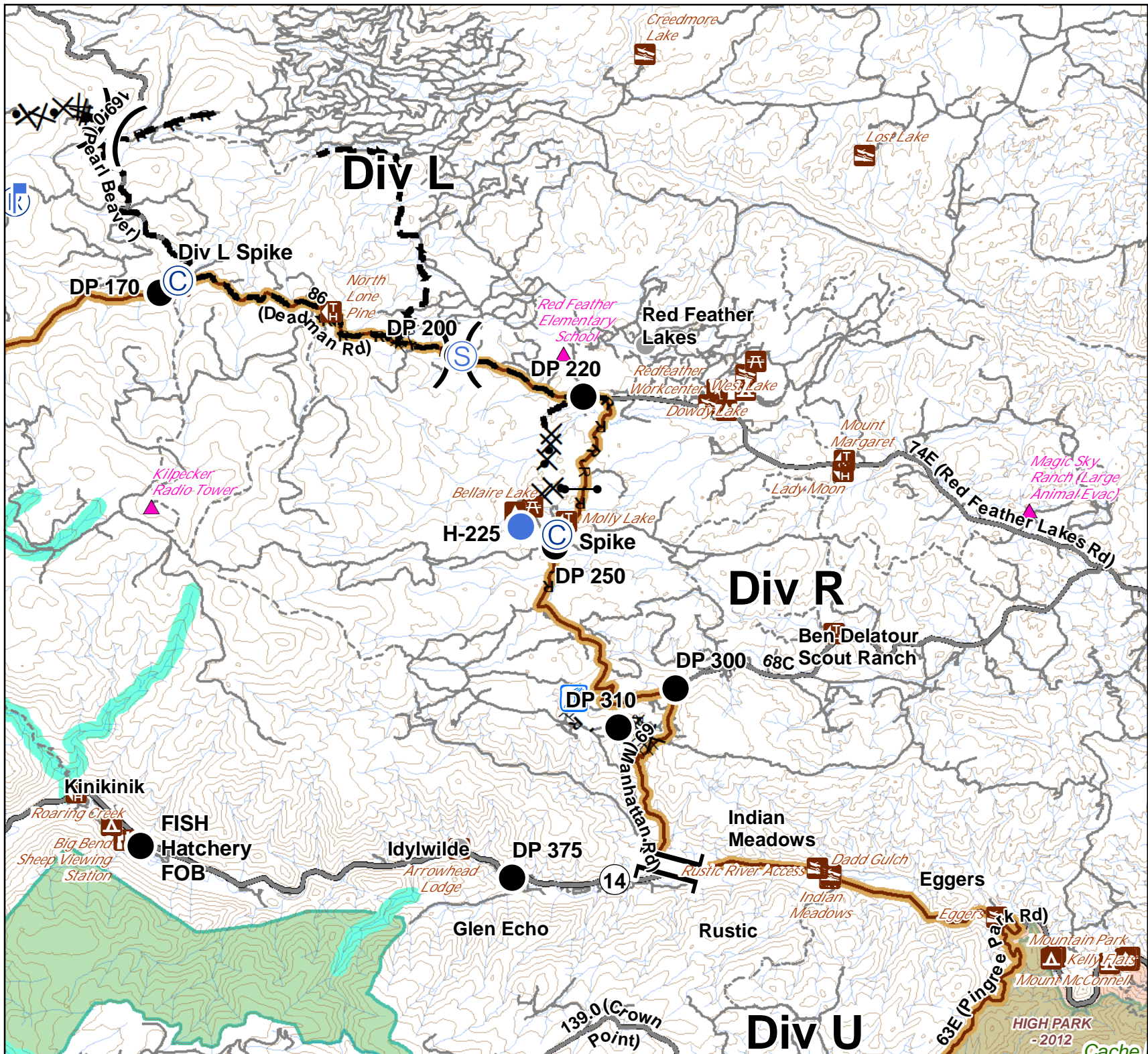
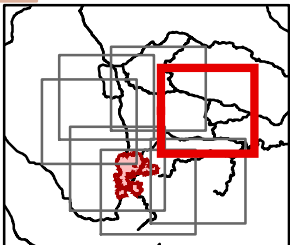
▬▬▬▬ Primary Routes

▬▬▬▬ Trail

600ft Retardant Avoidance Waterways

Wilderness Areas

Fire History





IAP

08/20/2020

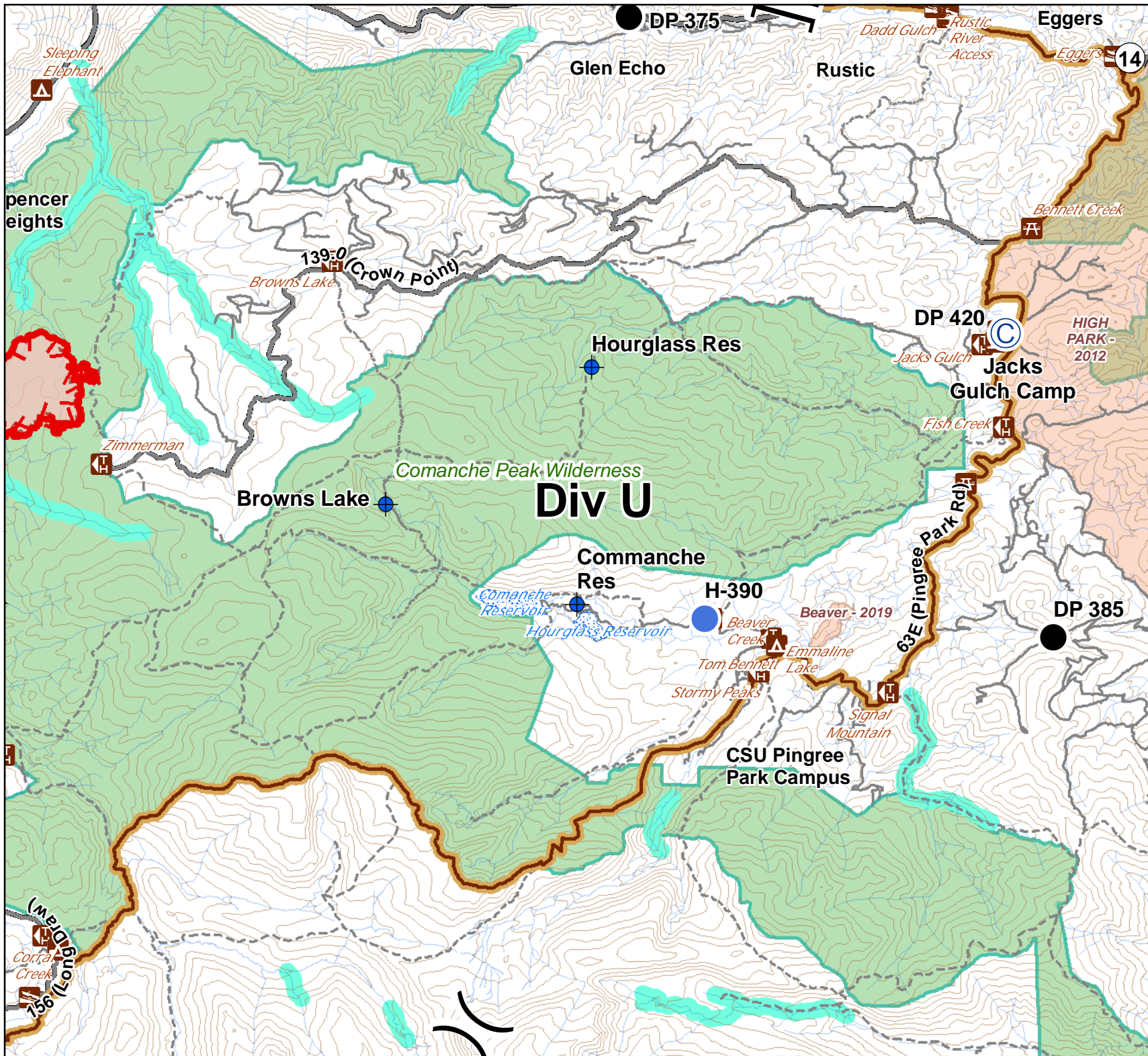
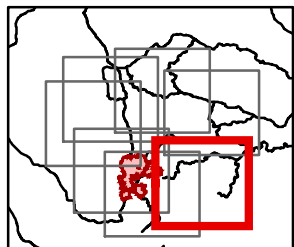
### Cameron Peak

15,738 Acres  
as of 0036 08/19

### Div U Branch I



- Water Access
- Campground
- Picnic Site
- Trailhead
- Camp
- Dip Site
- Drop Point
- Helispot
- Division Break
- Branch Break
- Uncontrolled Fire Edge
- Fire Perimeter
- Closure Area
- Primary Routes
- Trail
- 600ft Retardant Avoidance Waterways
- Wilderness Areas
- Fire History





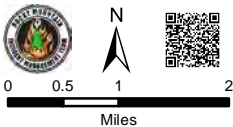
# IAP

08/20/2020

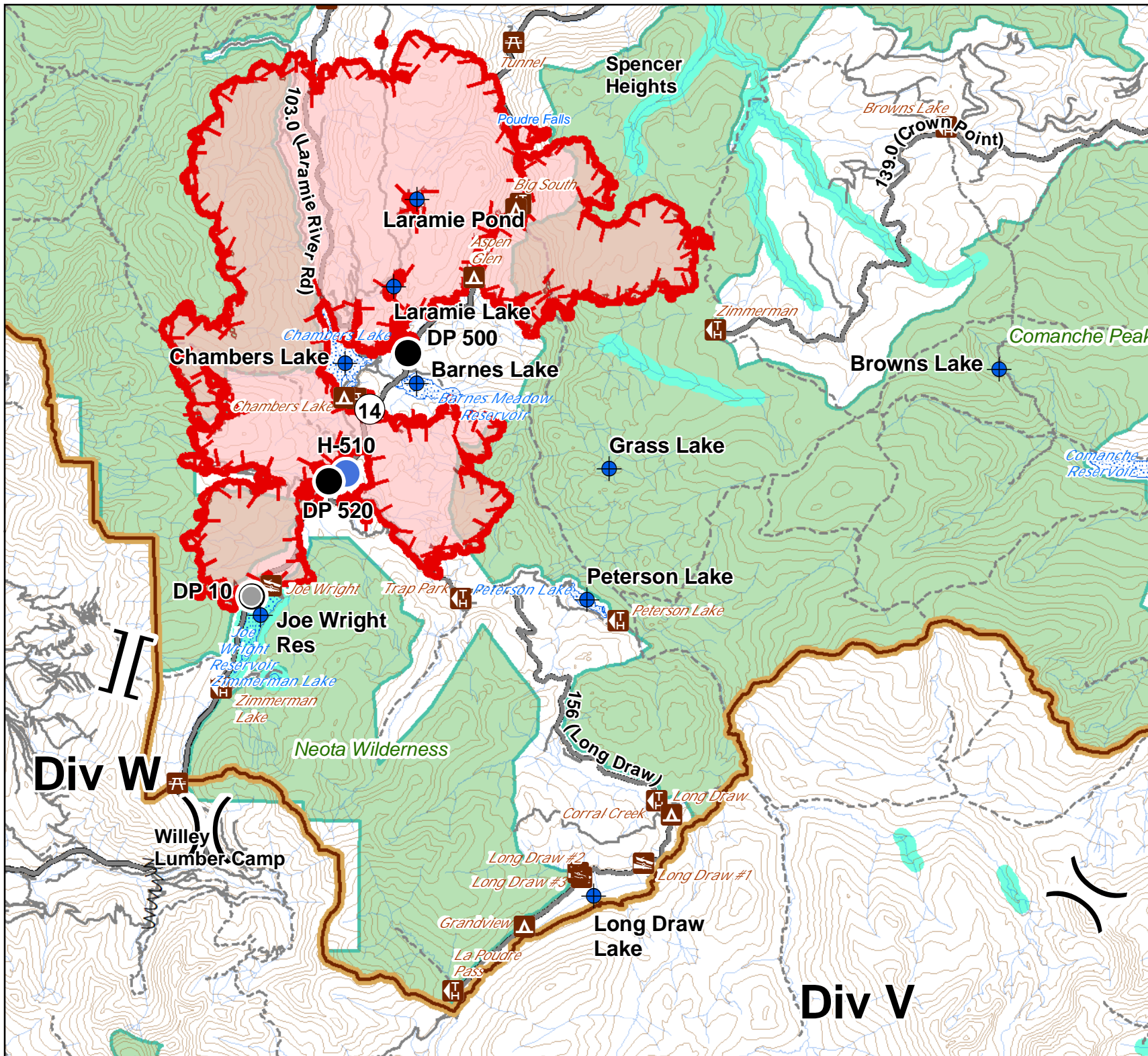
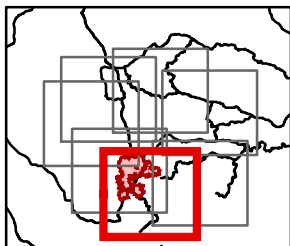
## Cameron Peak

15,738 Acres  
as of 0036 08/19

### Div V and W Branch I



- Water Access
- Campground
- Picnic Site
- Trailhead
- Dip Site
- Drop Point
- Helispot
- Other
- Division Break
- Branch Break
- Uncontrolled Fire Edge
- Fire Break Planned or Incomplete
- Fire Perimeter
- Closure Area
- Primary Routes
- Trail
- 600ft Retardant Avoidance Waterways
- Wilderness Areas





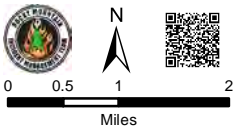
# IAP

08/20/2020

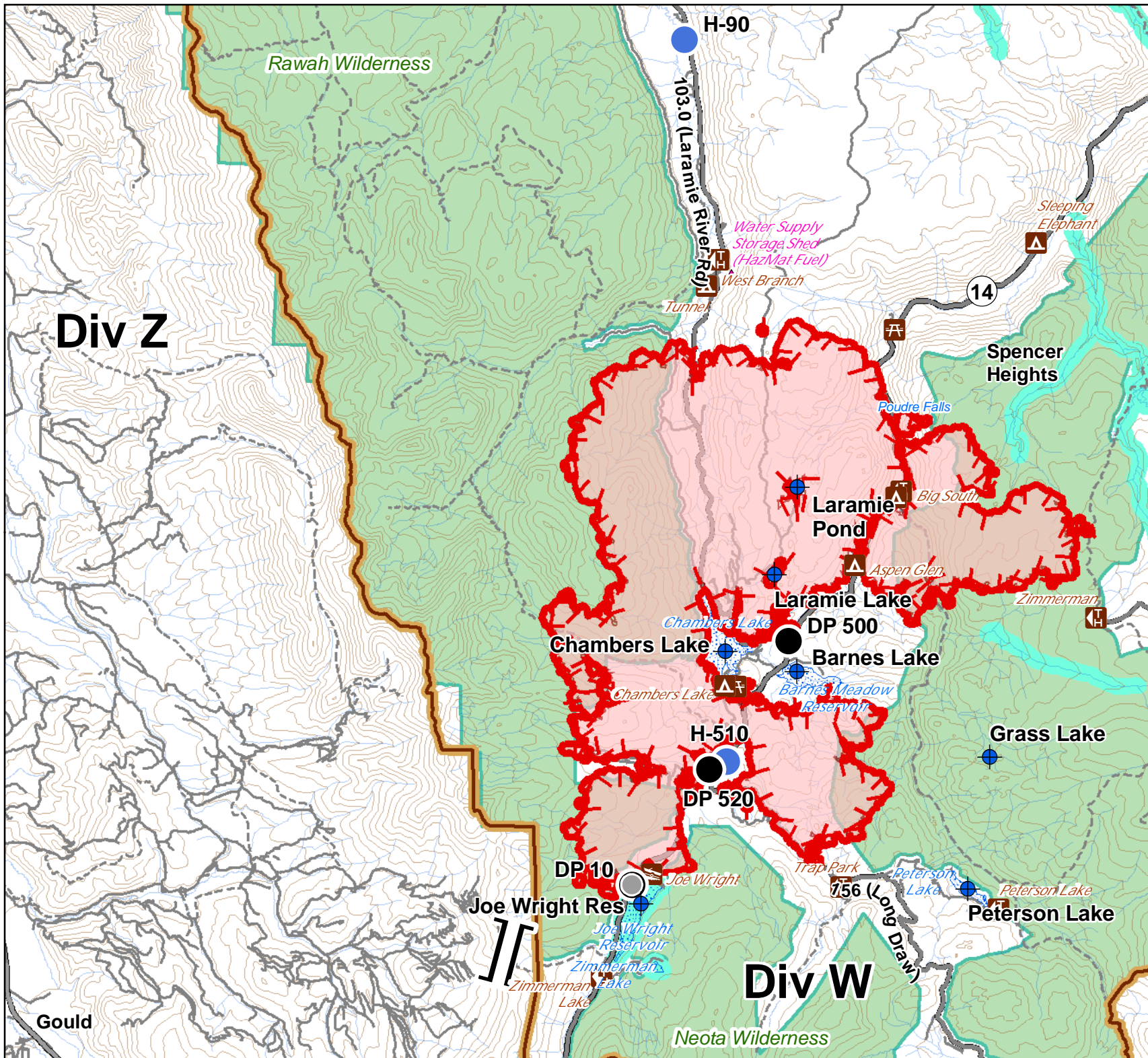
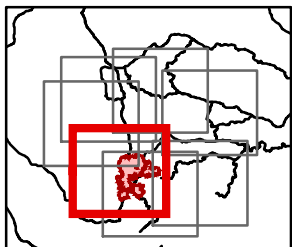
## Cameron Peak

15,738 Acres  
as of 0036 08/19

## Div Z South Branch II



- Critical Assets
- Water Access
- Campground
- Picnic Site
- Trailhead
- Dip Site
- Drop Point
- Helispot
- Other
- Branch Break
- Uncontrolled Fire Edge
- Fire Perimeter
- Closure Area
- Primary Routes
- Trail
- 600ft Retardant Avoidance Waterways
- Wilderness Areas





IAP

08/20/2020

### Cameron Peak

15,738 Acres  
as of 0036 08/19

### Div Z North Branch II



0 0.5 1 2  
Miles

- Critical Assets
- Campground
- Other Recreation Site
- Trailhead
- Drop Point
- Helispot
- Division Break
- Uncontrolled Fire Edge
- Proposed Dozer Line
- Planned Fire Line
- Fire Perimeter
- Closure Area
- Primary Routes
- Trail
- Wilderness Areas

