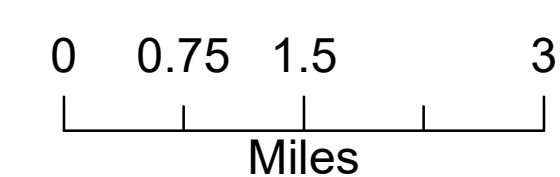


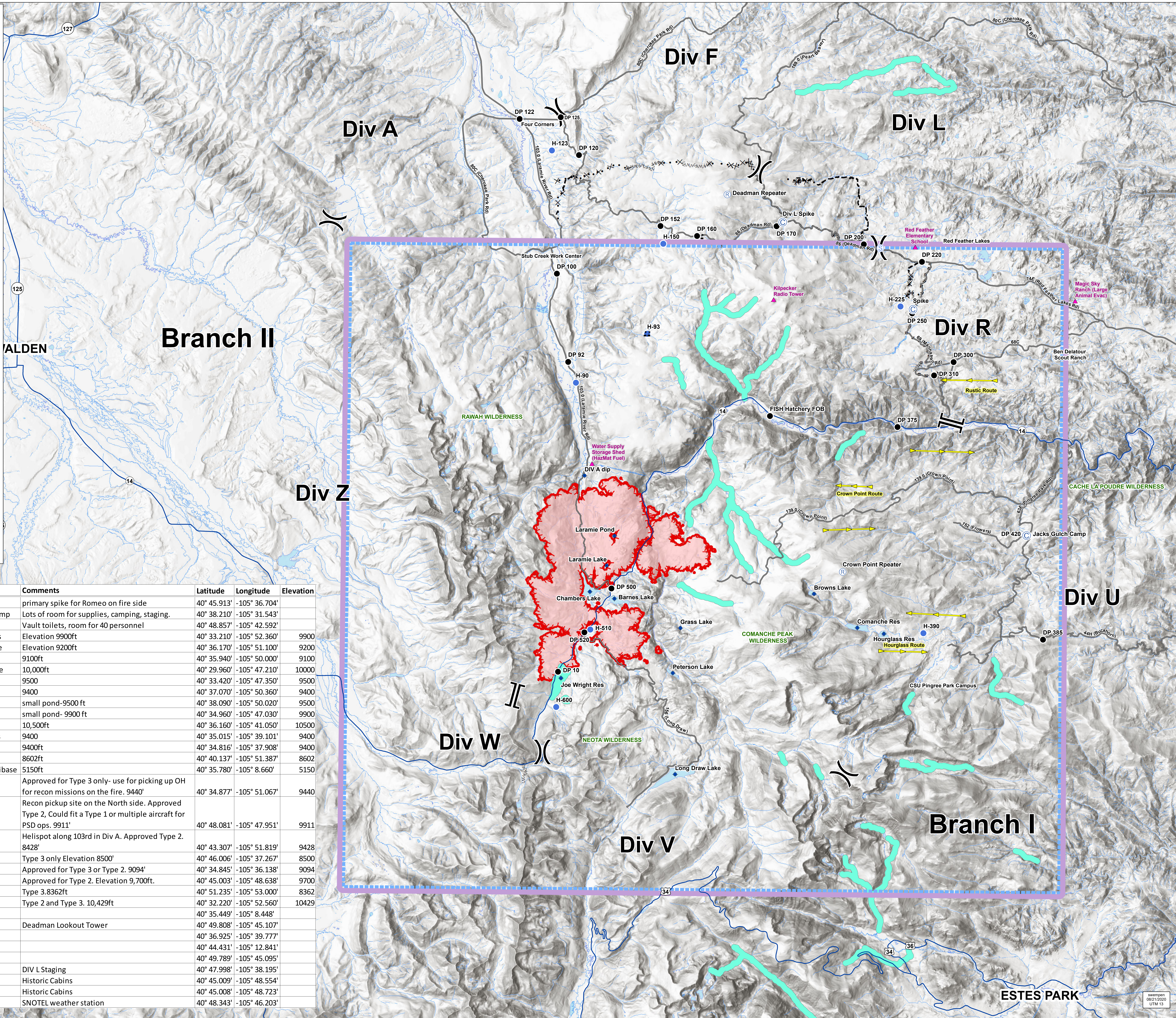
Air Operations

08/21/2020

Cameron Peak
CO-ARF 000636
16,602 Acres
as of 2305 08/20



- ▲ Critical Assets
- Camp
- Incident Command Post
- ▲ Value at Risk
- + Dip Site
- Drop Point
- Helispot
- + Lookout
- Ⓡ Repeater
- Ⓢ Staging Area
-) Division Break
- || Branch Break
- flight lines**
- ▶▶ east
- ◀◀ west
- Primary Routes
- Uncontrolled Fire Edge
- Completed Dozer Line
- - - Road as Completed Line
- Access or Improved Road
- x x Proposed Dozer Line
- ~ ~ ~ Fire Break Planned or Incomplete
- - - Planned Fire Line
- Other
- 600ft Retardant Avoidance Waterways
- Wildfire Daily Fire Perimeter
- TFR



FeatureCategory	Label	Comments	Latitude	Longitude	Elevation
Camp	Spike	primary spike for Romeo on fire side	40° 45.913'	-105° 36.704'	
Camp	Jacks Gulch Camp	Lots of room for supplies, camping, staging.	40° 38.210'	-105° 31.543'	
Camp	Div L Spike	Vault toilets, room for 40 personnel	40° 48.857'	-105° 42.592'	
Dip Site	Joe Wright Res	Elevation 9900ft	40° 33.210'	-105° 52.360'	9900
Dip Site	Chambers Lake	Elevation 9200ft	40° 36.170'	-105° 51.100'	9200
Dip Site	Barnes Lake	9100ft	40° 35.940'	-105° 50.000'	9100
Dip Site	Long Draw Lake	10,000ft	40° 29.960'	-105° 47.210'	10000
Dip Site	Peterson Lake	9500	40° 33.420'	-105° 47.350'	9500
Dip Site	Laramie Lake	9400	40° 37.070'	-105° 50.360'	9400
Dip Site	Laramie Pond	small pond-9500 ft	40° 38.090'	-105° 50.020'	9500
Dip Site	Grass Lake	small pond- 9900 ft	40° 34.960'	-105° 47.030'	9900
Dip Site	Browns Lake	10,500ft	40° 36.160'	-105° 41.050'	10500
Dip Site	Comanche Res	9400	40° 35.015'	-105° 39.101'	9400
Dip Site	Hourglass Res	9400ft	40° 34.816'	-105° 37.908'	9400
Dip Site	DIV A dip	8602ft	40° 40.137'	-105° 51.387'	8602
Helibase	Christman Helibase	5150ft	40° 35.780'	-105° 8.660'	5150
Helispot	H-510	Approved for Type 3 only- use for picking up OH for recon missions on the fire. 9440'	40° 34.877'	-105° 51.067'	9440
Helispot	H-150	Recon pickup site on the North side. Approved Type 2, Could fit a Type 1 or multiple aircraft for PSD ops. 9911'	40° 48.081'	-105° 47.951'	9911
Helispot	H-90	Helispot along 103rd in Div A. Approved Type 2. 8428'	40° 43.307'	-105° 51.819'	9428
Helispot	H-225	Type 3 only Elevation 8500'	40° 46.006'	-105° 37.267'	8500
Helispot	H-390	Approved for Type 3 or Type 2. 9094'	40° 34.845'	-105° 36.138'	9094
Helispot	H-93	Approved for Type 2. Elevation 9,700ft.	40° 45.003'	-105° 48.638'	9700
Helispot	H-123	Type 3. 8362ft	40° 51.235'	-105° 53.000'	8362
Helispot	H-600	Type 2 and Type 3. 10,429ft	40° 32.220'	-105° 52.560'	10429
Incident Command Post			40° 35.449'	-105° 8.448'	
Lookout	Deadman Lookout Tower		40° 49.808'	-105° 45.107'	
Repeater	Crown Point		40° 36.925'	-105° 39.777'	
Repeater	Bonner Peak		40° 44.431'	-105° 12.841'	
Repeater	Deadman		40° 49.789'	-105° 45.095'	
Staging Area		DIV L Staging	40° 47.998'	-105° 38.195'	
Value at Risk		Historic Cabins	40° 45.009'	-105° 48.554'	
Value at Risk		Historic Cabins	40° 45.008'	-105° 48.723'	
Value at Risk		SNOTEL weather station	40° 48.343'	-105° 46.203'	