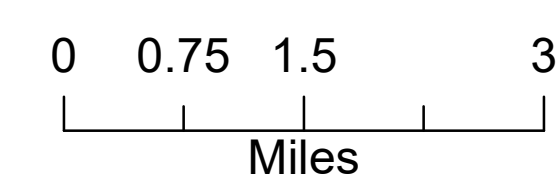


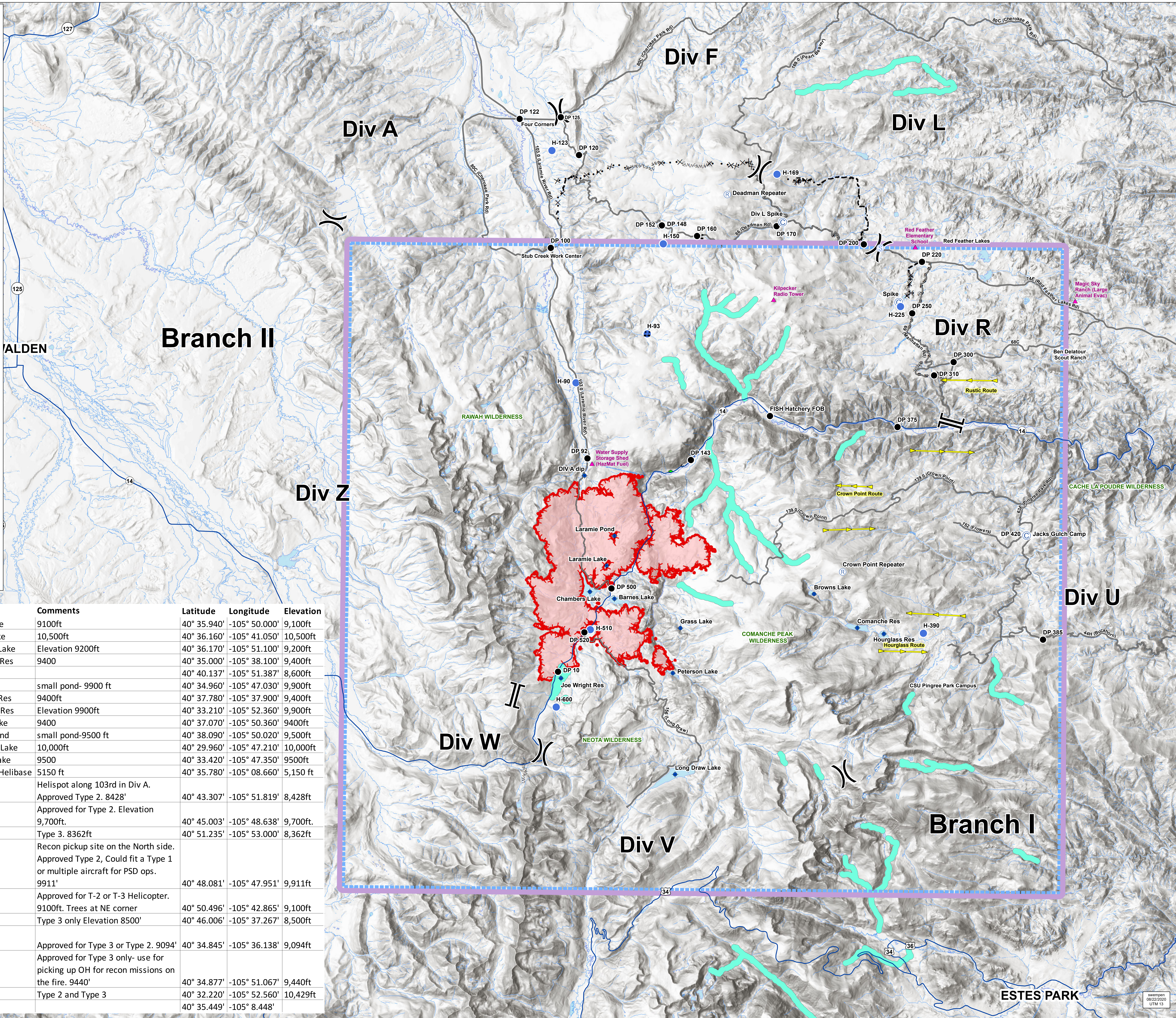
Air Operations

08/22/2020

Cameron Peak
CO-ARF 000636
17,246 Acres
as of 2147 08/21



- ▲ Critical Assets
- Camp
- ▲ Incident Command Post
- ⚡ Value at Risk
- + Dip Site
- Drop Point
- Helispot
- + Lookout
- Repeater
- Staging Area
-) Division Break
- || Branch Break
- flight lines**
- ▶ east
- ◀ west
- Primary Routes
- Uncontrolled Fire Edge
- - - Completed Dozer Line
- - - Completed Hand Line
- - - Road as Completed Line
- Access or Improved Road
- Completed Plow Line
- x Proposed Dozer Line
- - - Fire Break Planned or Incomplete
- - - Planned Fire Line
- Other
- 600ft Retardant Avoidance Waterways
- Wildfire Daily Fire Perimeter
- TFR



Feature Category	Label	Comments	Latitude	Longitude	Elevation
Dip Site	Barnes Lake	9100ft	40° 35.940'	-105° 50.000'	9,100ft
Dip Site	Browns Lake	10,500ft	40° 36.160'	-105° 41.050'	10,500ft
Dip Site	Chambers Lake	Elevation 9200ft	40° 36.170'	-105° 51.100'	9,200ft
Dip Site	Comanche Res	9400	40° 35.000'	-105° 38.100'	9,400ft
Dip Site	DIV A dip		40° 40.137'	-105° 51.387'	8,600ft
Dip Site	Grass Lake	small pond- 9900 ft	40° 34.960'	-105° 47.030'	9,900ft
Dip Site	Hourglass Res	9400ft	40° 37.780'	-105° 37.900'	9,400ft
Dip Site	Joe Wright Res	Elevation 9900ft	40° 33.210'	-105° 52.360'	9,900ft
Dip Site	Laramie Lake	9400	40° 37.070'	-105° 50.360'	9,400ft
Dip Site	Laramie Pond	small pond-9500 ft	40° 38.090'	-105° 50.020'	9,500ft
Dip Site	Long Draw Lake	10,000ft	40° 29.960'	-105° 47.210'	10,000ft
Dip Site	Peterson Lake	9500	40° 33.420'	-105° 47.350'	9,500ft
Helibase	Christman Helibase	5150 ft	40° 35.780'	-105° 08.660'	5,150 ft
Helispot	H-90	Helispot along 103rd in Div A. Approved Type 2. 8428'	40° 43.307'	-105° 51.819'	8,428ft
Helispot	H-93	Approved for Type 2. Elevation 9,700ft.	40° 45.003'	-105° 48.638'	9,700ft.
Helispot	H-123	Type 3. 8362ft	40° 51.235'	-105° 53.000'	8,362ft
Helispot	H-150	Recon pickup site on the North side. Approved Type 2, Could fit a Type 1 or multiple aircraft for PSD ops. 9911'	40° 48.081'	-105° 47.951'	9,911ft
Helispot	H-169	Approved for T-2 or T-3 Helicopter. 9100ft. Trees at NE corner	40° 50.496'	-105° 42.865'	9,100ft
Helispot	H-225	Type 3 only Elevation 8500'	40° 46.006'	-105° 37.267'	8,500ft
Helispot	H-390	Approved for Type 3 or Type 2. 9094'	40° 34.845'	-105° 36.138'	9,094ft
Helispot	H-510	Approved for Type 3 only- use for picking up OH for recon missions on the fire. 9440'	40° 34.877'	-105° 51.067'	9,440ft
Helispot	H-600	Type 2 and Type 3	40° 32.220'	-105° 52.560'	10,429ft
Incident Command Post			40° 35.449'	-105° 8.448'	