

IAP

08/22/2020

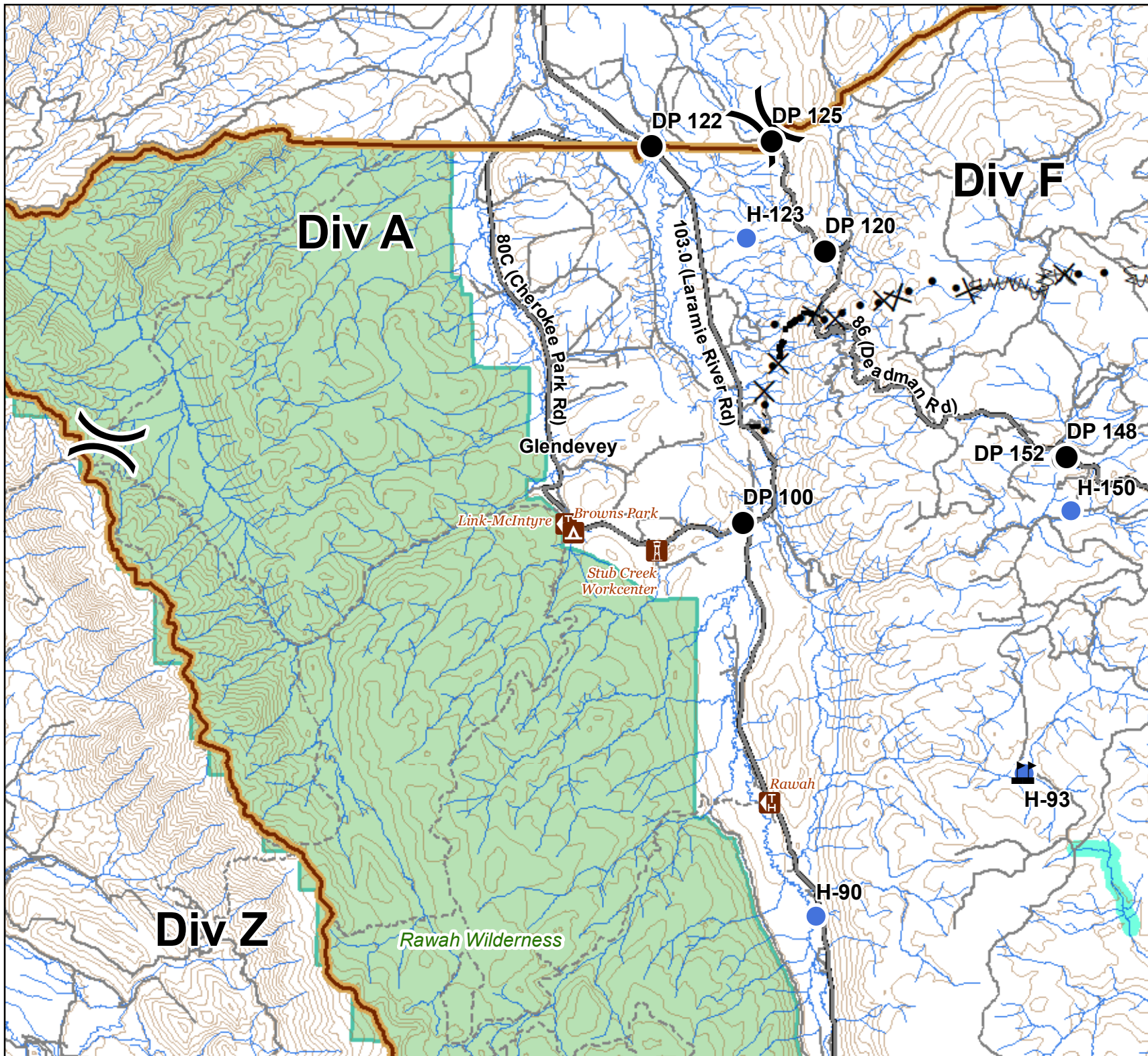
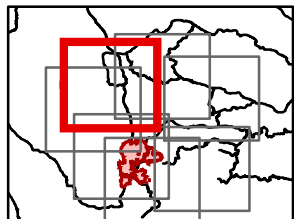
### Cameron Peak

16,602 Acres  
as of 2305 08/20

### Div A Branch II



- Campground
- Other Recreation Site
- Trailhead
- Drop Point
- Helispot
- Value at Risk
- Division Break
- Proposed Dozer Line
- Fire Break Planned or Incomplete
- Planned Fire Line
- Closure Area
- Primary Routes
- Local or 4WD road
- Trail
- 600ft Retardant Avoidance Waterways
- Wilderness Areas





IAP

08/22/2020

### Cameron Peak

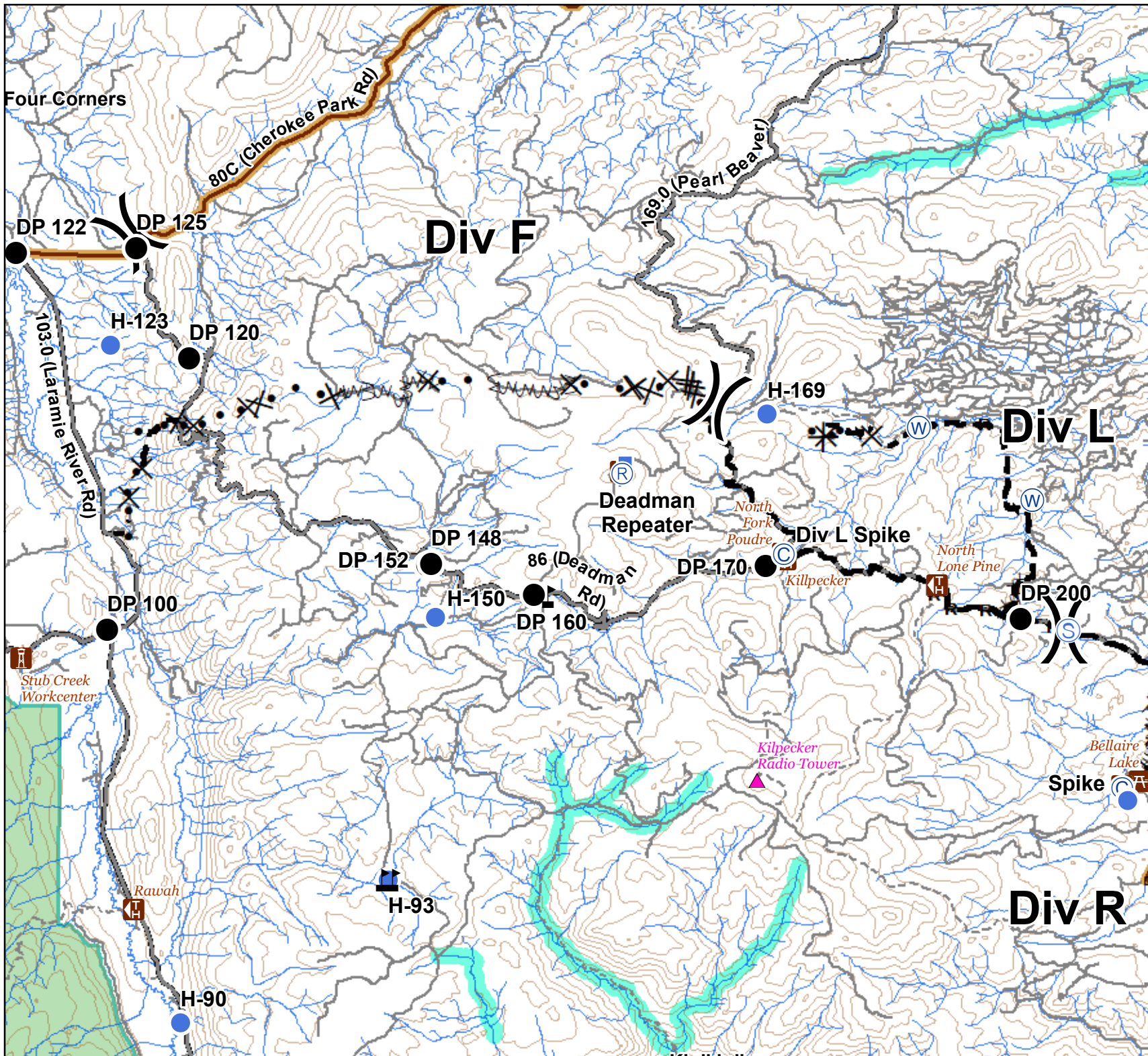
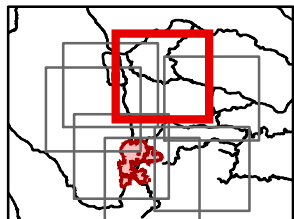
16,602 Acres  
as of 2305 08/20

### Div F and L Branch II



- Critical Assets
- Campground
- Picnic Site
- Other Recreation Site
- Trailhead
- Camp
- Drop Point
- Gate
- Helispot
- Lookout
- Repeater
- Staging Area
- Stream Crossing
- Water Source
- Value at Risk
- Division Break

- Completed Dozer Line
- Road as Completed Line
- Access or Improved Road
- Proposed Dozer Line
- Fire Break Planned or Incomplete
- Planned Fire Line
- Closure Area
- Primary Routes
- Local or 4WD road
- Trail
- 600ft Retardant Avoidance Waterways
- Wilderness Areas





# IAP

08/22/2020

## Cameron Peak

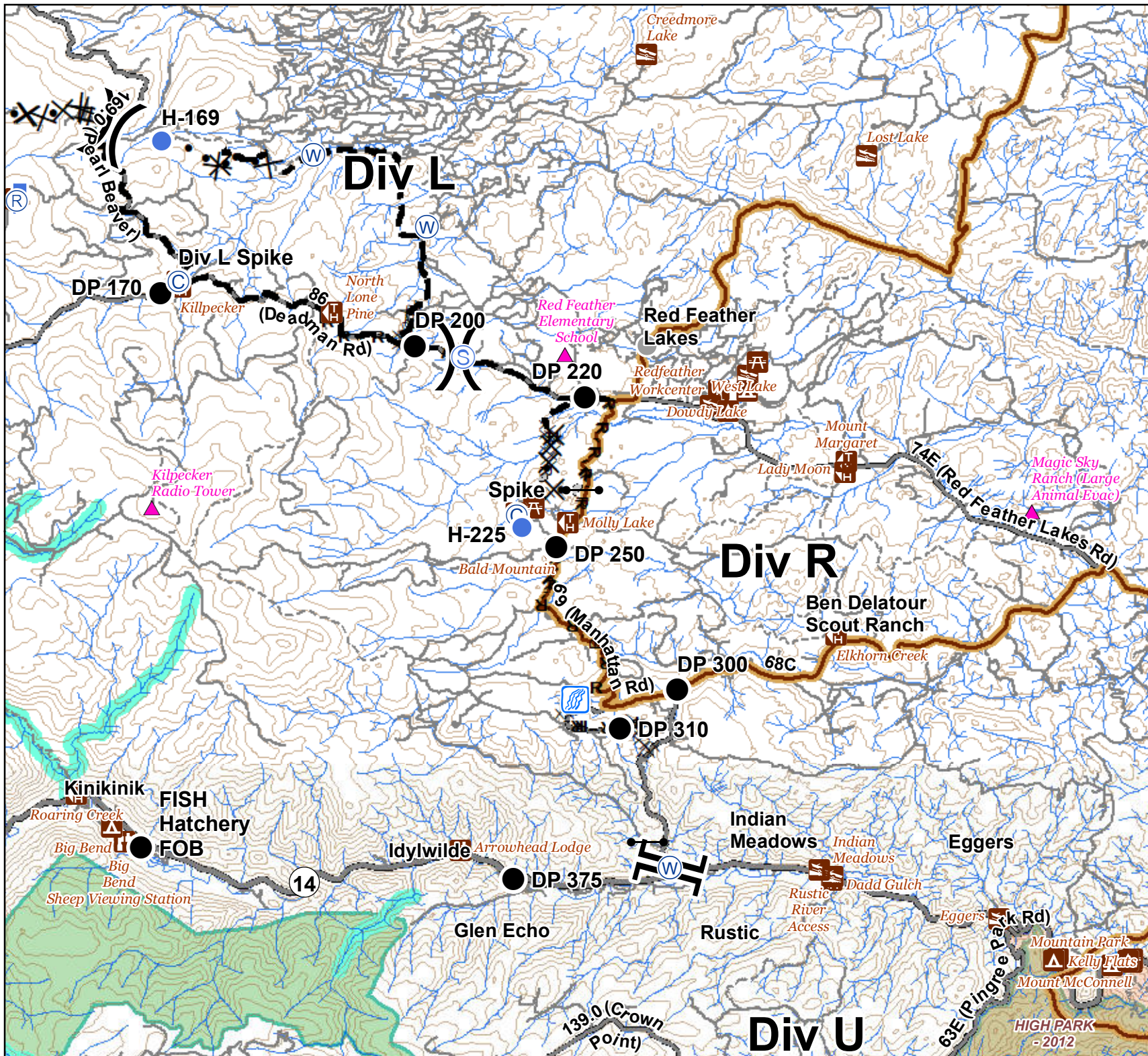
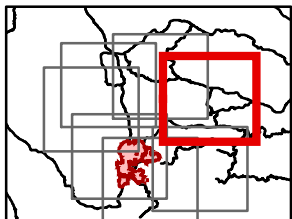
16,602 Acres  
as of 2305 08/20

## Div L and R Branch II



- Critical Assets
- Water Access
- Campground
- Day Use Area
- Picnic Site
- Other Recreation Site
- Trailhead
- Camp
- Drop Point
- Gate
- Helispot
- Lookout
- Repeater
- Staging Area
- Stream Crossing
- Water Source
- Other
- Division Break
- Branch Break

- Completed Dozer Line
- Completed Hand Line
- Road as Completed Line
- Access or Improved Road
- Proposed Dozer Line
- Planned Fire Line
- Closure Area
- Primary Routes
- Local or 4WD road
- Trail
- 600ft Retardant Avoidance Waterways
- Wilderness Areas
- Fire History





IAP

08/22/2020

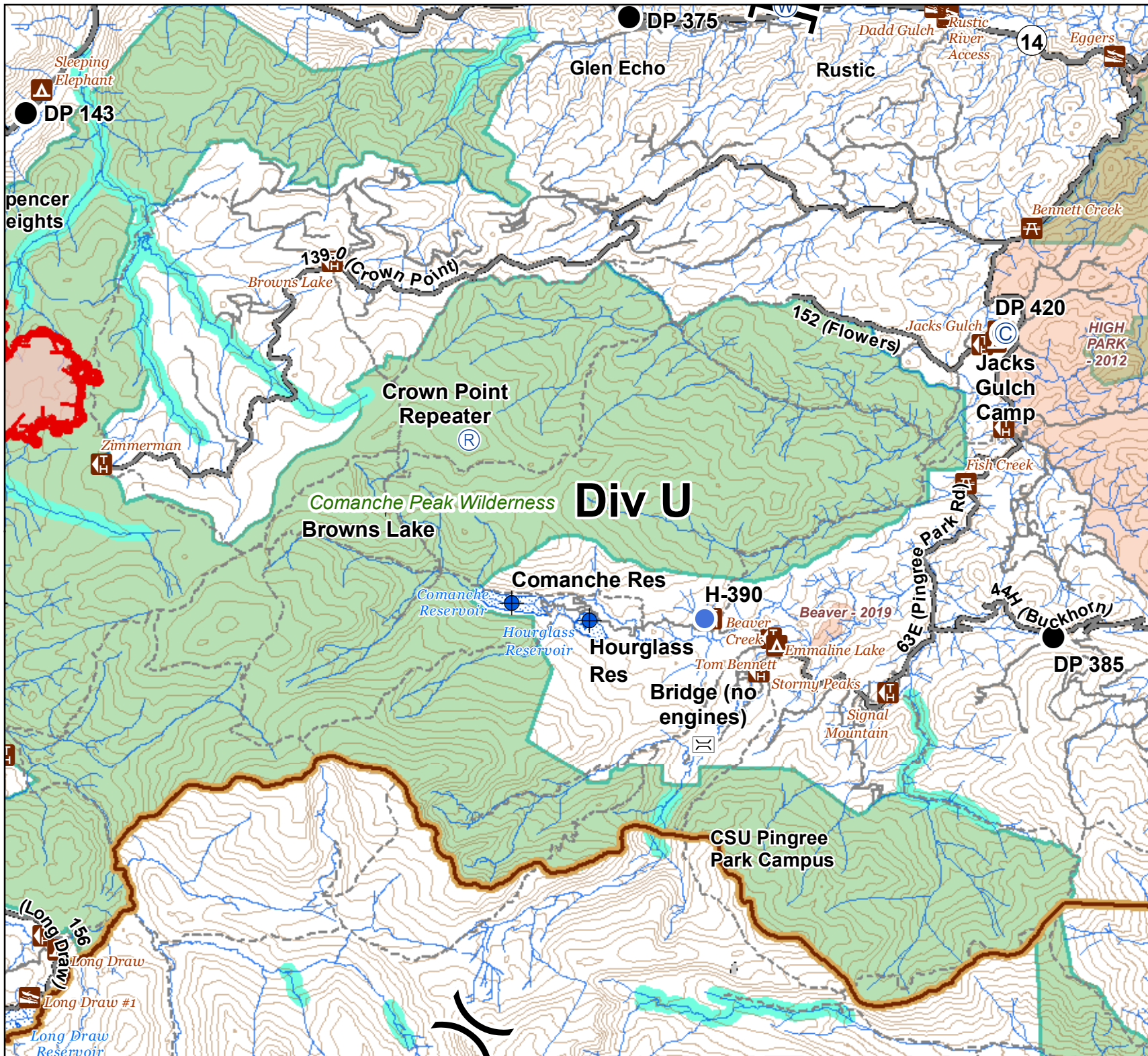
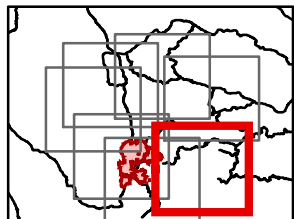
### Cameron Peak

16,602 Acres  
as of 2305 08/20

### Div U Branch I



- Water Access
- Campground
- Picnic Site
- Trailhead
- Bridge
- Camp
- Dip Site
- Drop Point
- Helispot
- Repeater
- Division Break
- Branch Break
- Uncontrolled Fire Edge
- Completed Hand Line
- Access or Improved Road
- Fire Perimeter
- Closure Area
- Primary Routes
- Local or 4WD road
- Trail
- 600ft Retardant Avoidance Waterways
- Wilderness Areas
- Fire History





IAP

08/22/2020

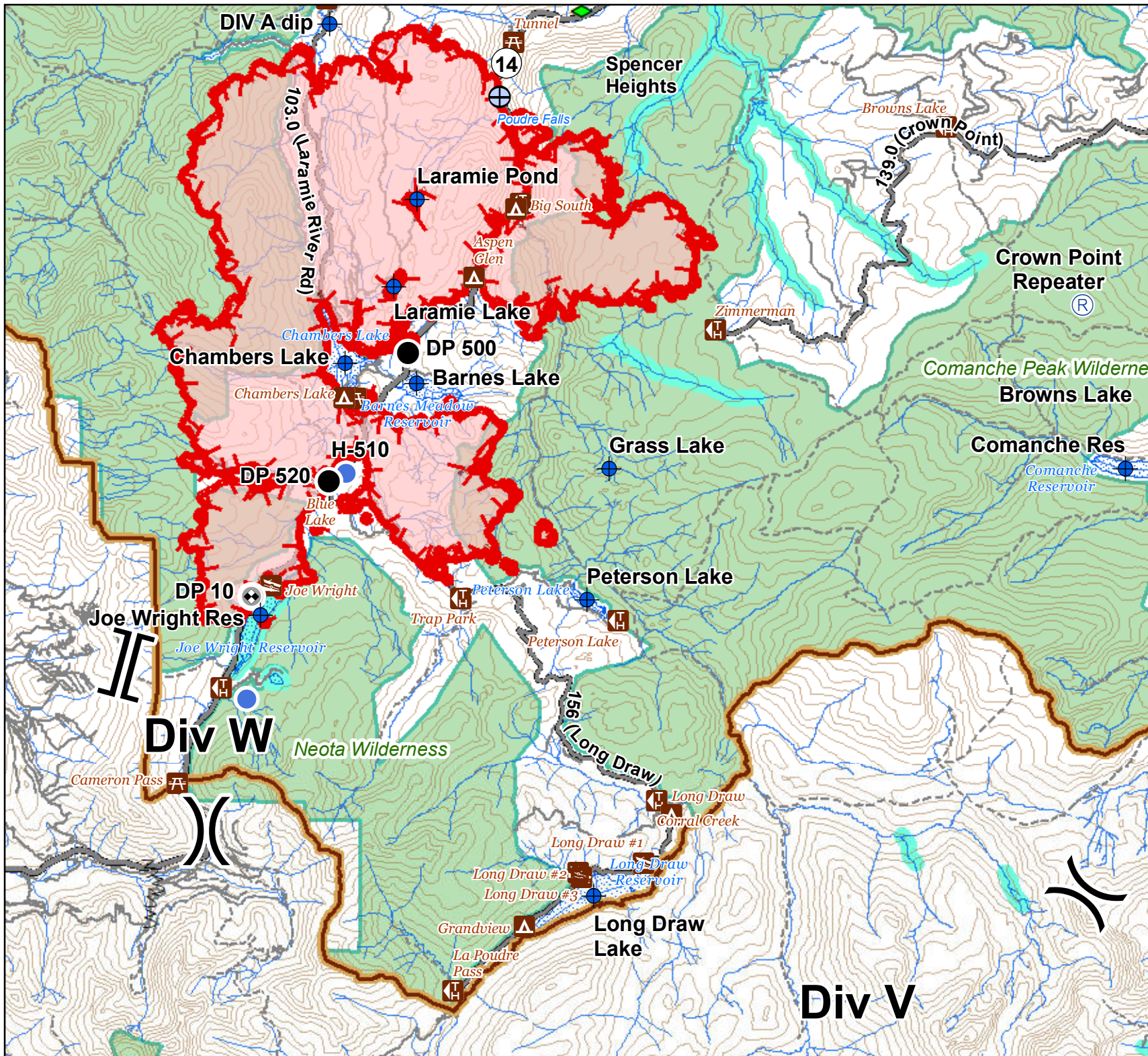
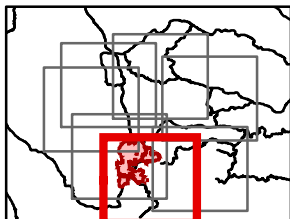
**Cameron Peak**

16,602 Acres  
as of 2305 08/20

**Div V and W  
Branch I**



- Water Access
- Campground
- Picnic Site
- Trailhead
- Verizon COW
- Dip Site
- Drop Point
- Hellsite
- Repeater
- Draft Site
- Other
- Division Break
- Branch Break
- Uncontrolled Fire Edge
- Fire Break Planned or Incomplete
- Fire Perimeter
- Closure Area
- Primary Routes
- Local or 4WD road
- Trail
- 600ft Retardant Avoidance Waterways
- Wilderness Areas



**Div V**



# IAP

08/22/2020

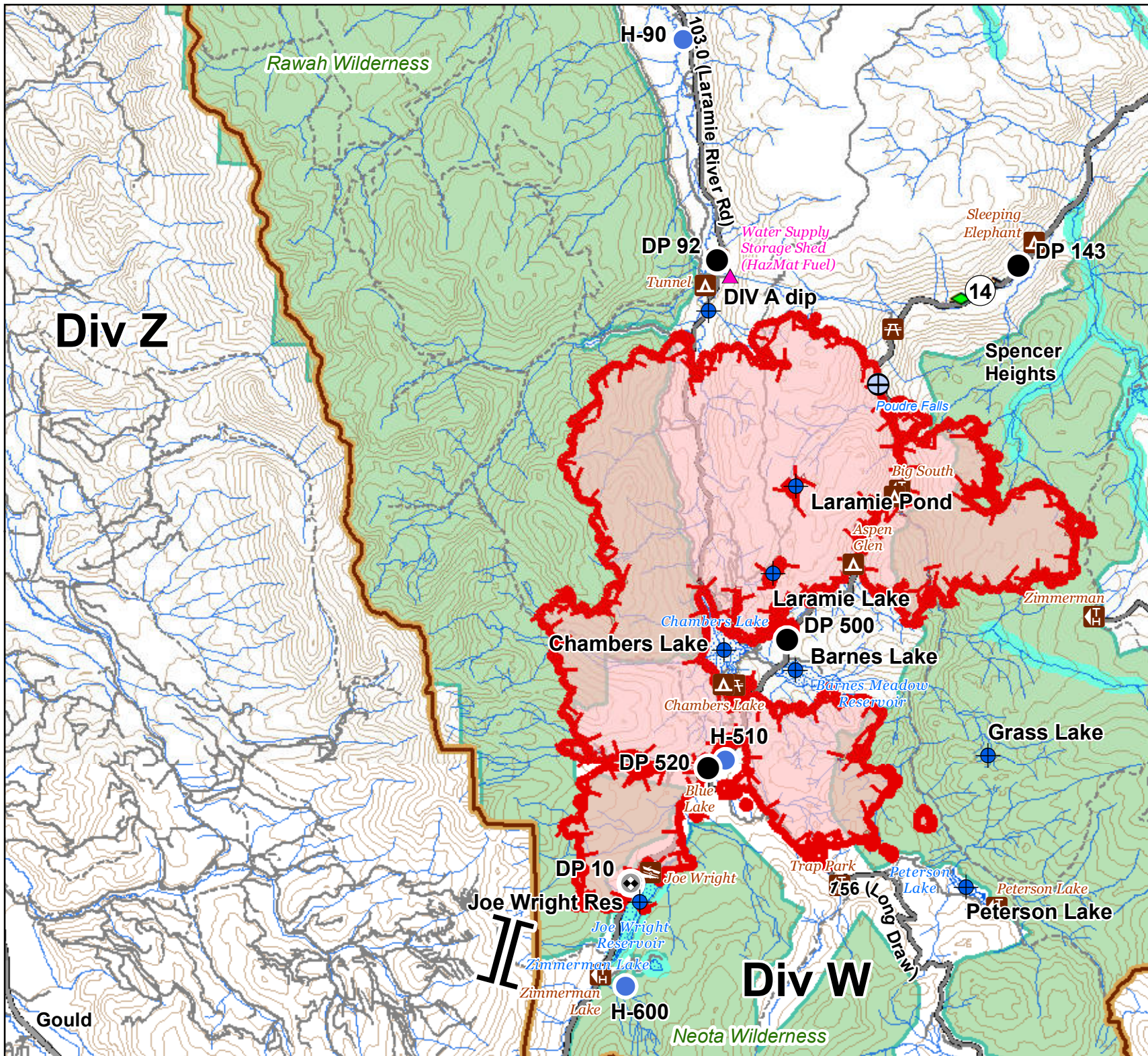
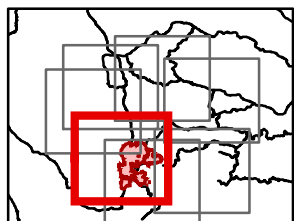
## Cameron Peak

16,602 Acres  
as of 2305 08/20

### Div Z South Branch II



- Critical Assets
- Water Access
- Campground
- Picnic Site
- Trailhead
- Verizon COW
- Dip Site
- Drop Point
- Helispot
- Draft Site
- Other
- Branch Break
- Uncontrolled Fire Edge
- Completed Hand Line
- Completed Plow Line
- Fire Perimeter
- Closure Area
- Primary Routes
- Local or 4WD road
- Trail
- 600ft Retardant Avoidance Waterways
- Wilderness Areas





IAP

08/22/2020

### Cameron Peak

16,602 Acres  
as of 2305 08/20

### Div Z North Branch II



- Critical Assets
- Campground
- Other Recreation Site
- Trailhead
- Dip Site
- Drop Point
- Helispot
- Division Break
- Uncontrolled Fire Edge
- Proposed Dozer Line
- Planned Fire Line
- Fire Perimeter
- Closure Area
- Primary Routes
- Local or 4WD road
- Trail
- Wilderness Areas

