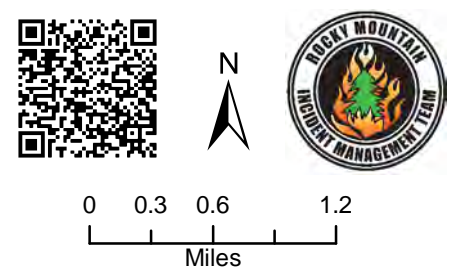


Branch II
08/23/2020

Cameron Peak
CO-ARF 000636
17,246 Acres
as of 2147 08/21



- Critical Assets
- Campground
- Picnic Site
- Visitor Center
- Observation Site
- Work Center
- Closure
- Camp
- Dip Site
- Drop Point
- Gate
- Helispot
- Lookout
- Repeater
- Staging Area
- Stream Crossing
- Value at Risk
- Division Break
- Branch Break

- Uncontrolled Fire Edge
- Completed Dozer Line
- Completed Hand Line
- Road as Completed Line
- Access or Improved Road
- Completed Flow Line
- Proposed Dozer Line
- Fire Break Planned or Incomplete
- Planned Fire Line
- Other
- Primary Routes
- Highway or ramp
- Local connector
- Local or 4WD road
- Trail
- 600ft Retardant Avoidance Waterways
- TFR
- Forest Service
- Bureau of Land Management
- Private
- State, County, City, Areas
- State
- State Forest
- USFS Wilderness
- Wildfire Daily Fire Perimeter

Branch II

Div Z

Div A

Div F

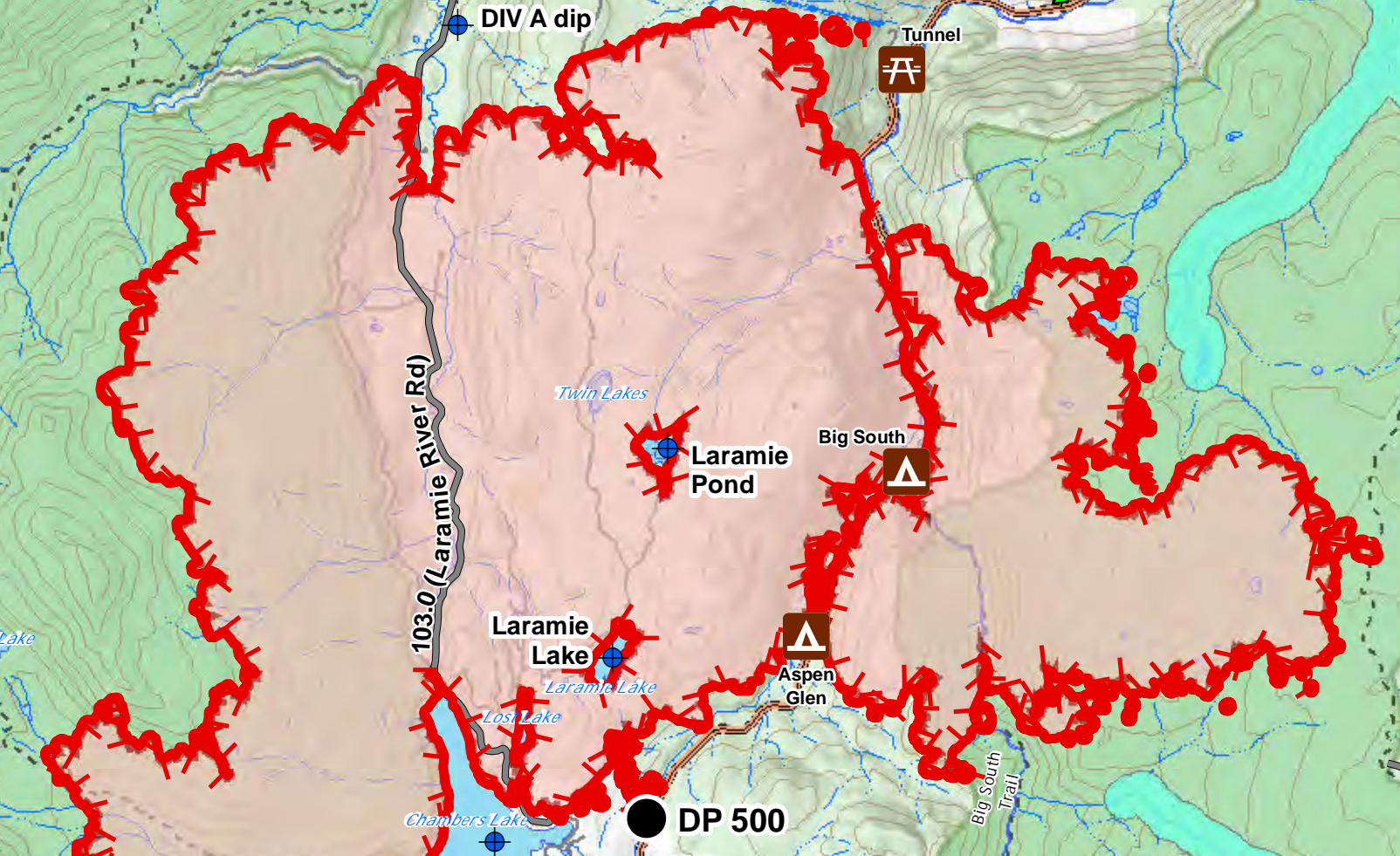
Div L

Div R

Div U

RAWAH WILDERNESS

CACHE LA POUVRE WILDERNESS



Stub Creek Work Center

Red Feather Lakes

Ben Delatour Scout Ranch

Jacks Gulch Camp

Water Supply Storage Shed (HazMat Fuel)

FISH Hatchery FOB

Red Feather Elementary School

Magic Sky Ranch (Large Animal Evac)

Four Corners

CMD-12

CMD-10

Chambers Lake

Laramie Lake

Laramie Pond

14

14

14

68C

68C

68C

68C

68C

68C

68C