

IAP Index

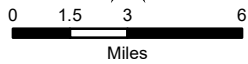
08/23/2020

Cameron Peak

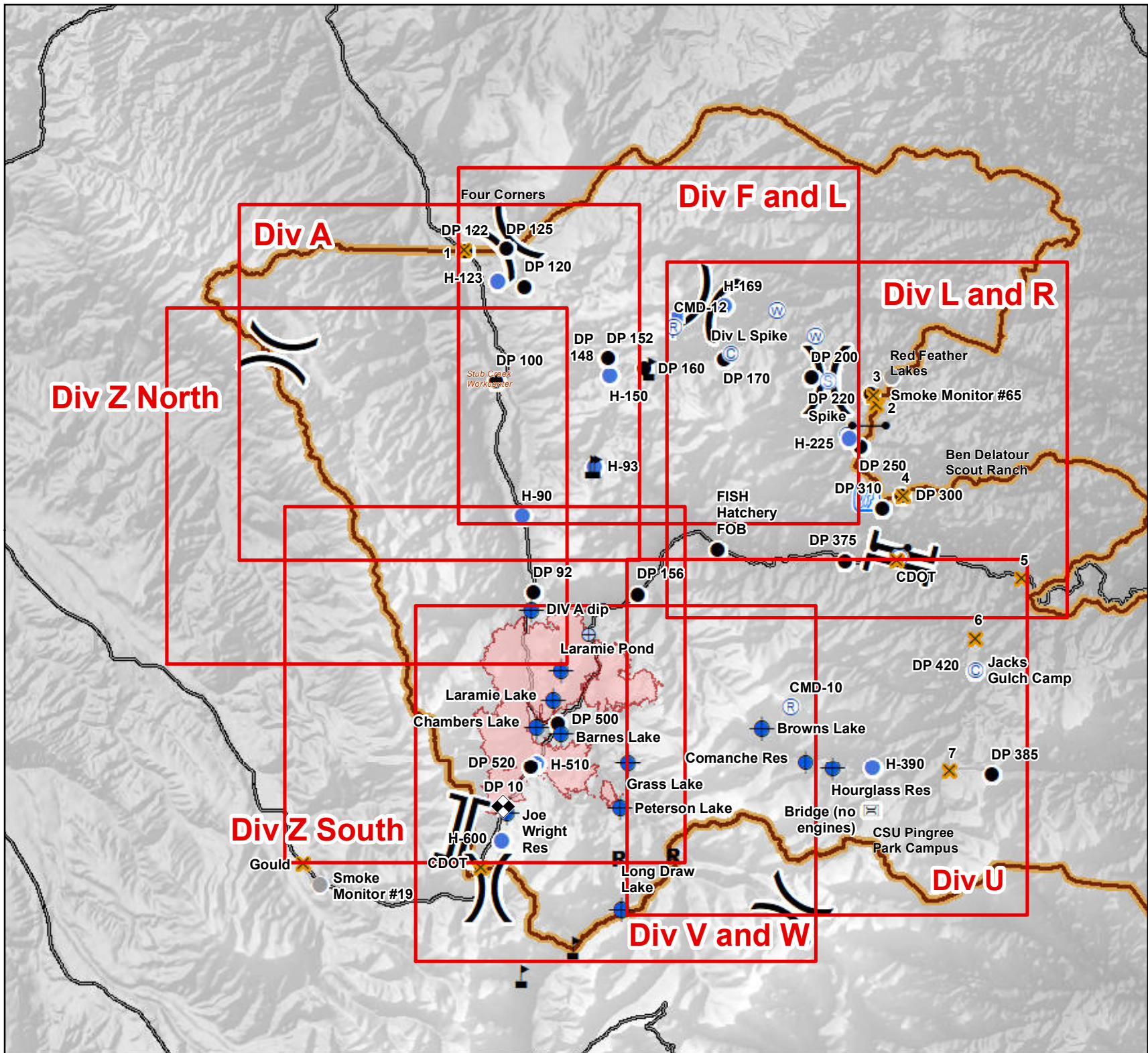
CO-ARF 000636

17,246 Acres

as of 2147 08/21



- Page Indicator
- Verizon COW
- Bridge
- Camp
- Closure
- Dip Site
- Drop Point
- Gate
- Helisport
- Lookout
- Repeater
- Fish Study Equipment
- Staging Area
- Water Source
- Draft Site
- Value at Risk
- Other
- Division Break
- Branch Break
- Fire Perimeter
- Closure Area
- Major Roads



S. Myers
8/22/2020 2214
UTM 13

IAP

08/23/2020

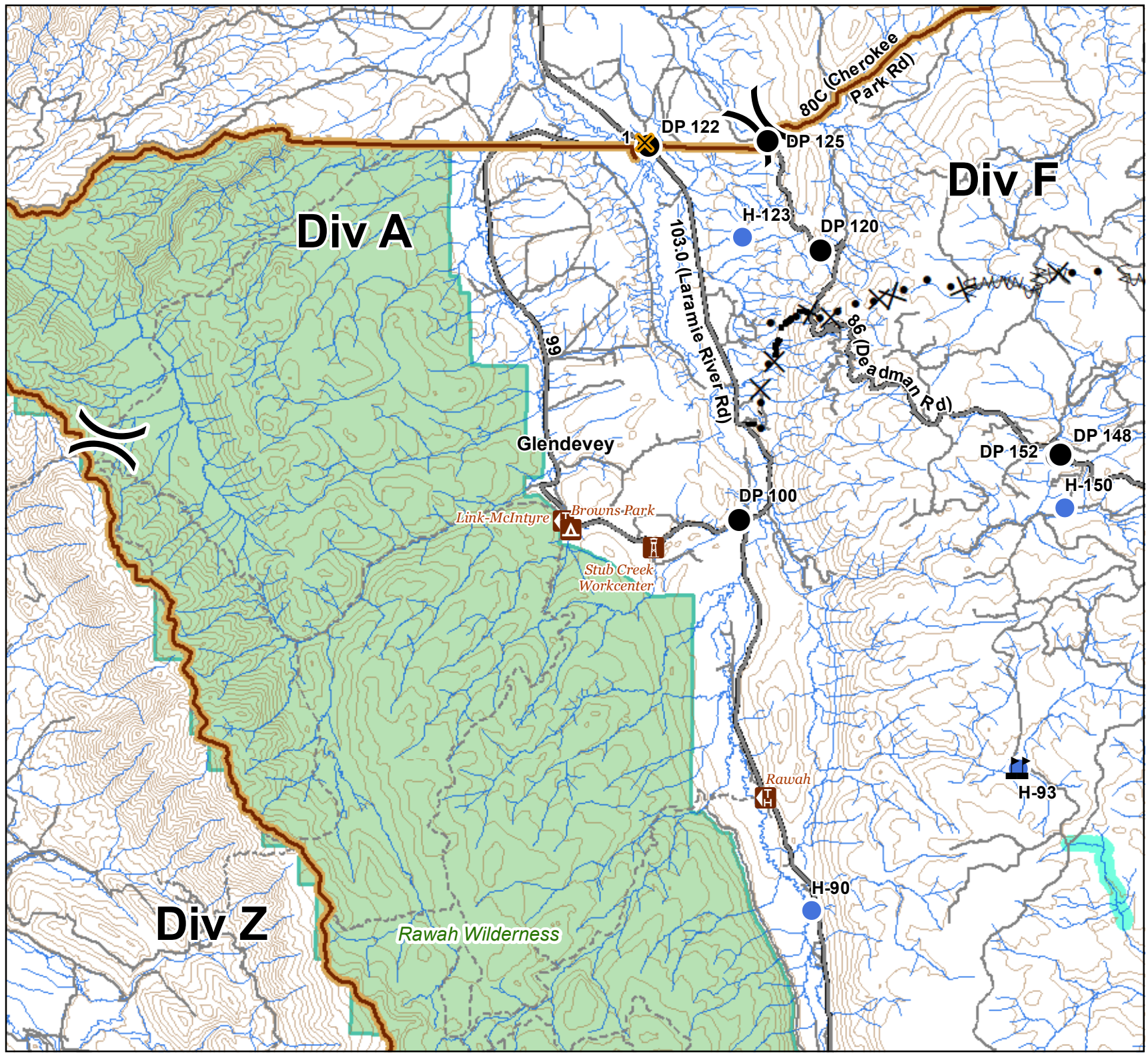
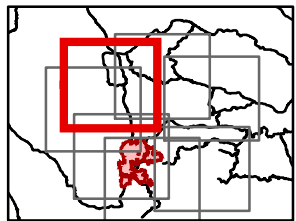
Cameron Peak

17,246 Acres
as of 2147 08/21

Div A Branch II



- Campground
- Other Recreation Site
- Trailhead
- Closure
- Drop Point
- Helispot
- Value at Risk
- Division Break
- Proposed Dozer Line
- Fire Break Planned or Incomplete
- Planned Fire Line
- Closure Area
- Primary Routes
- Local or 4WD road
- Trail
- 600ft Retardant Avoidance Waterways
- Wilderness Areas



IAP

08/23/2020

Cameron Peak

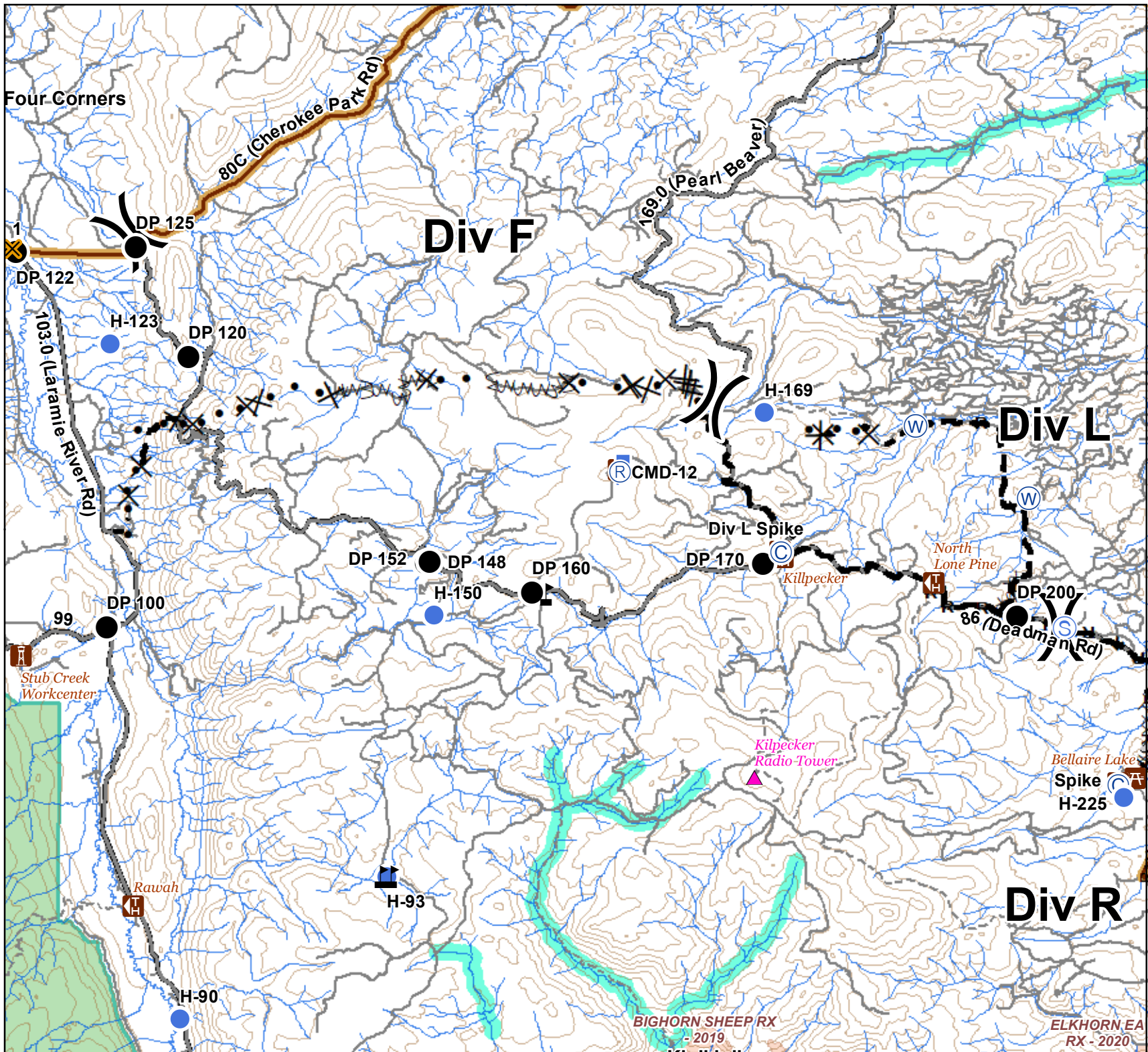
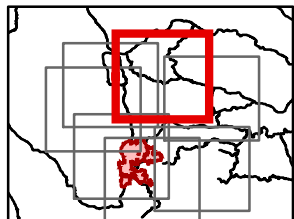
17,246 Acres
as of 2147 08/21

Div F and L Branch II



- Critical Assets
- Campground
- Picnic Site
- Other Recreation Site
- Trailhead
- Camp
- Closure
- Drop Point
- Gate
- Helispot
- Lookout
- Repeater
- Staging Area
- Stream Crossing
- Water Source
- Value at Risk
- Division Break

- Completed Dozer Line
- Completed Hand Line
- Road as Completed Line
- Access or Improved Road
- Proposed Dozer Line
- Fire Break Planned or Incomplete
- Planned Fire Line
- Closure Area
- Primary Routes
- Local or 4WD road
- Trail
- 600ft Retardant Avoidance Waterways
- Wilderness Areas
- Fire History



BIGHORN SHEEP RX
- 2019

ELKHORN EA
RX - 2020

IAP

08/23/2020

Cameron Peak

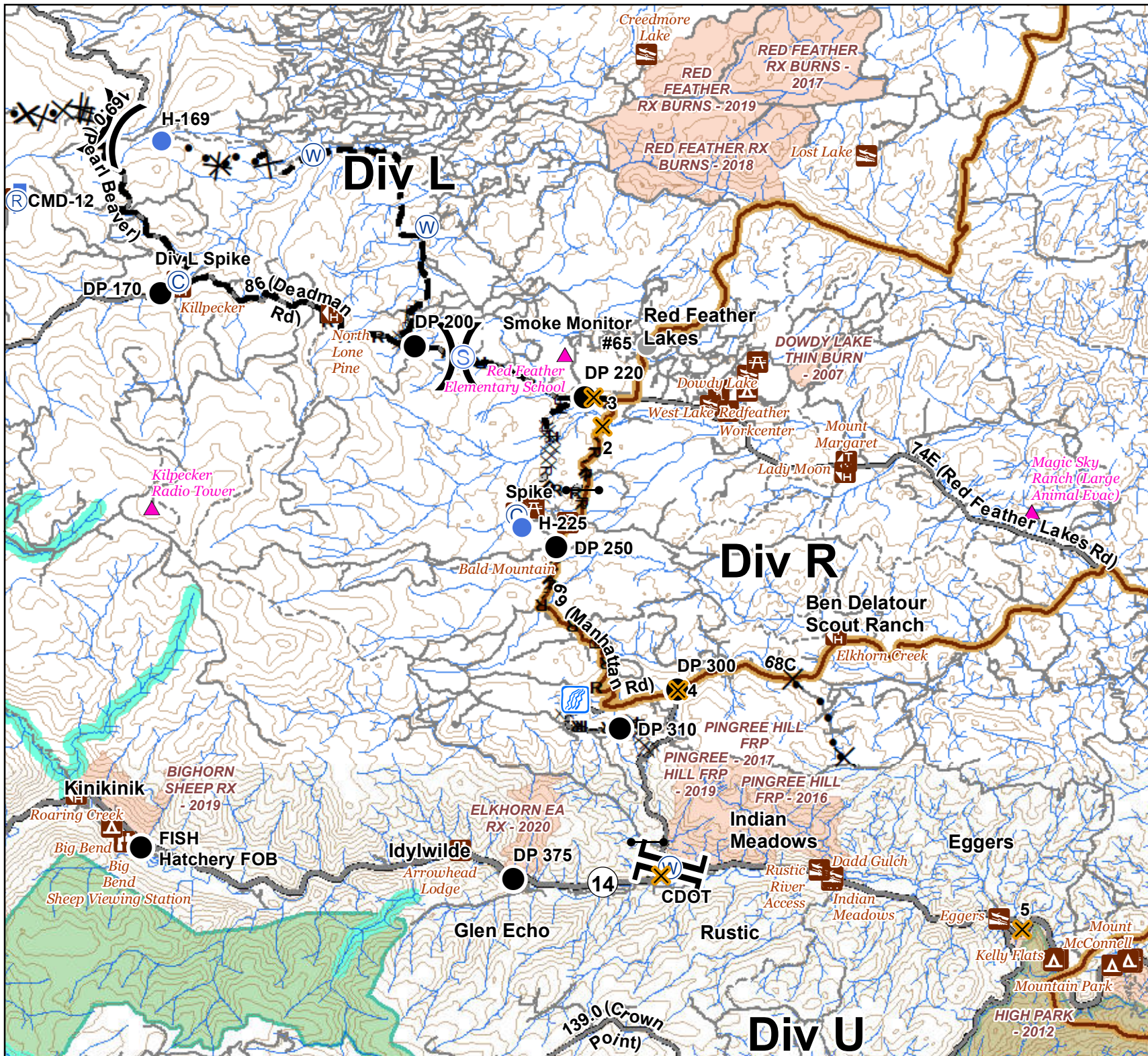
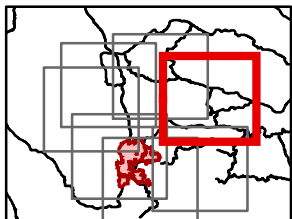
17,246 Acres
as of 2147 08/21

Div L and R Branch II



- Critical Assets
- Water Access
- Campground
- Day Use Area
- Picnic Site
- Other Recreation Site
- Trailhead
- Camp
- Closure
- Drop Point
- Gate
- Helispot
- Lookout
- Repeater
- Staging Area
- Stream Crossing
- Water Source
- Other
- Division Break
- Branch Break

- Completed Dozer Line
- Completed Hand Line
- Road as Completed Line
- Access or Improved Road
- Proposed Dozer Line
- Planned Fire Line
- Closure Area
- Primary Routes
- Local or 4WD road
- Trail
- 600ft Retardant Avoidance Waterways
- Wilderness Areas
- Fire History



IAP

08/23/2020

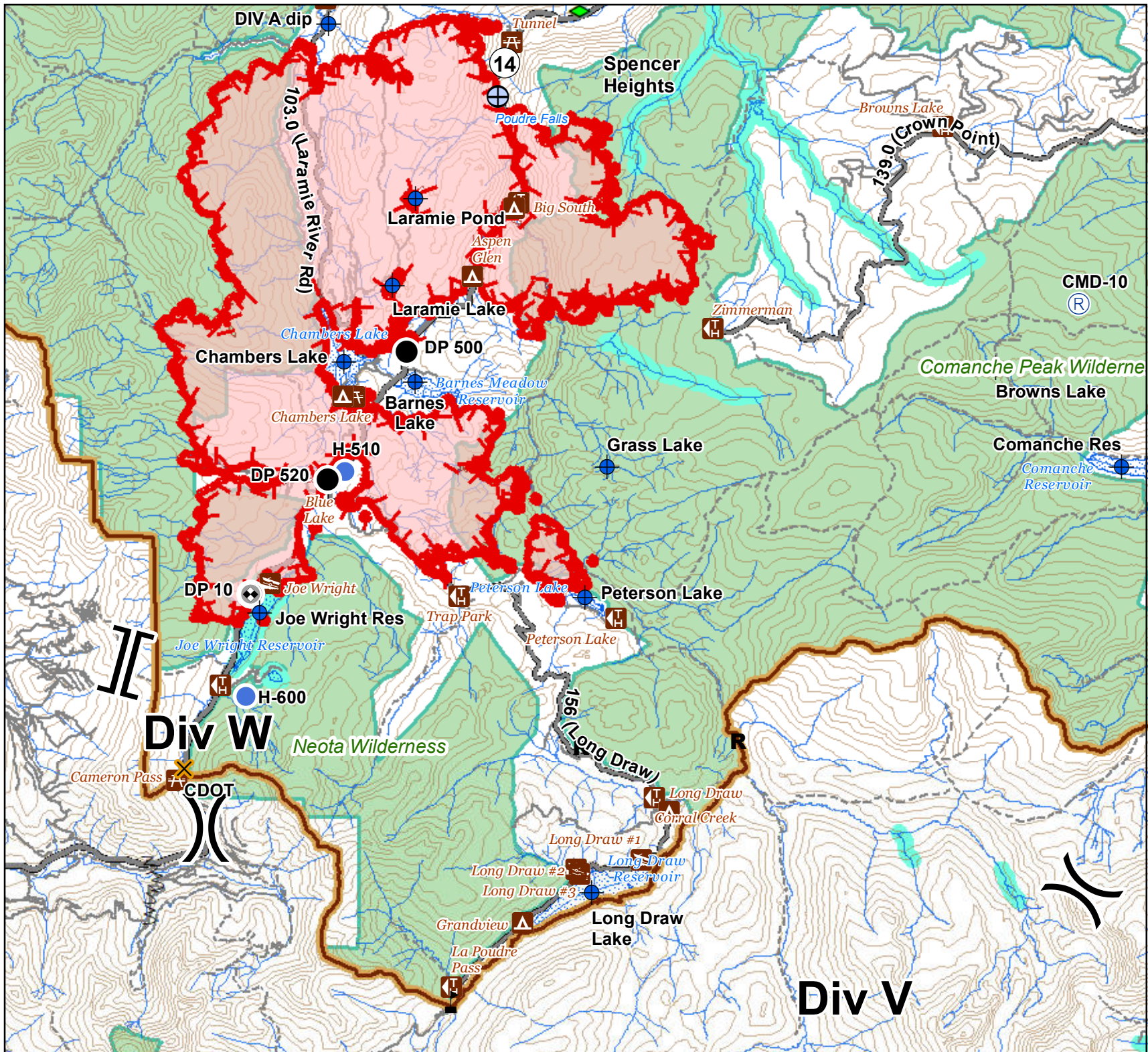
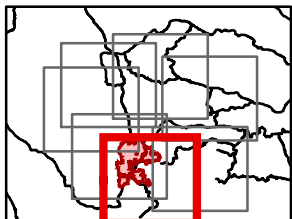
Cameron Peak

17,246 Acres
as of 2147 08/21

Div V and W Branch I



- Water Access
- Campground
- Picnic Site
- Trailhead
- Verizon COW
- Closure
- Dip Site
- Drop Point
- Helispot
- Repeater
- Fish Study Equipment
- Draft Site
- Value at Risk
- Other
- Division Break
- Branch Break
- Uncontrolled Fire Edge
- Fire Break Planned or Incomplete
- Fire Perimeter
- Closure Area
- Primary Routes
- Local or 4WD road
- Trail
- 60ft Retardant Avoidance Waterways
- Wilderness Areas



IAP

08/23/2020

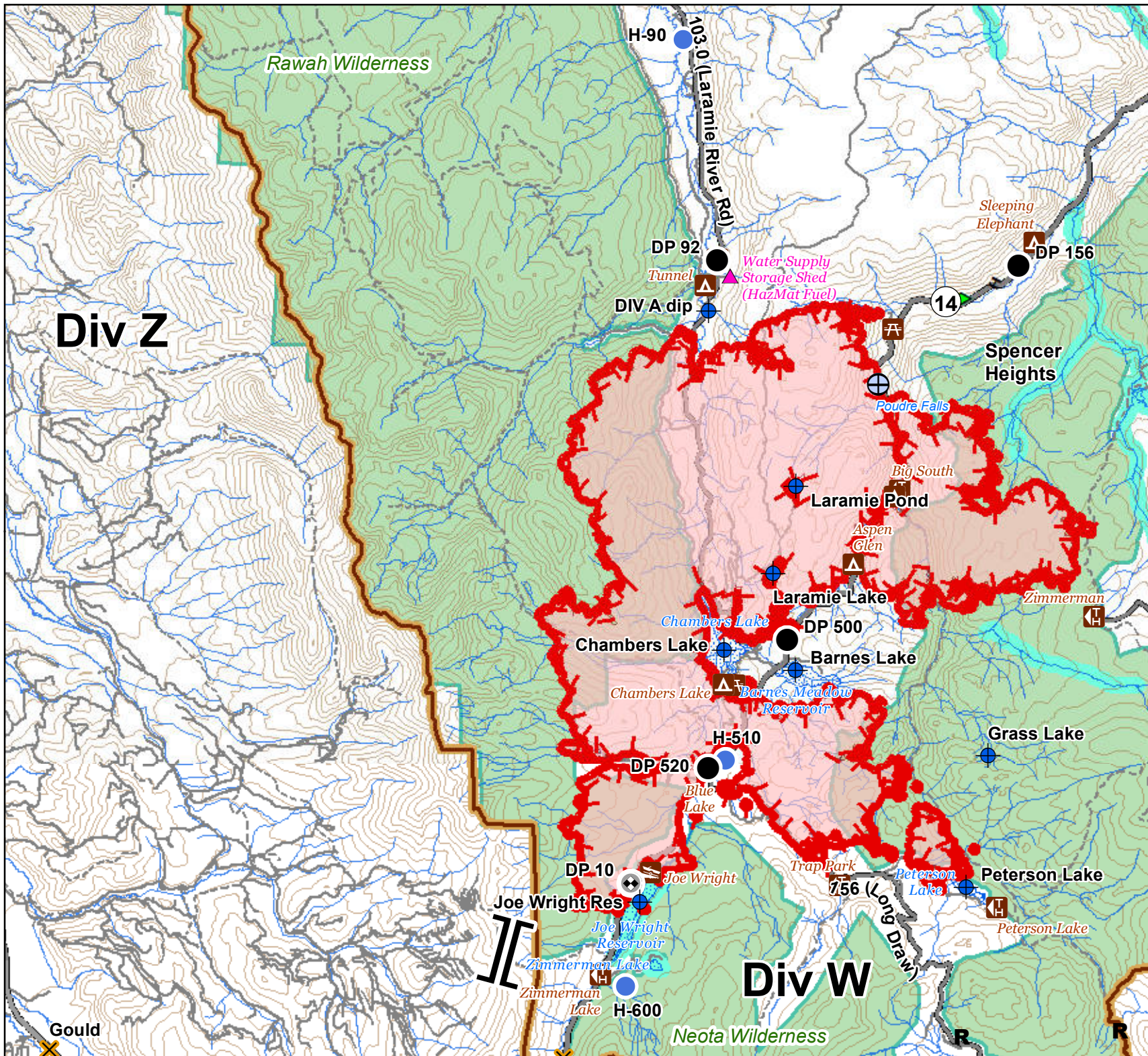
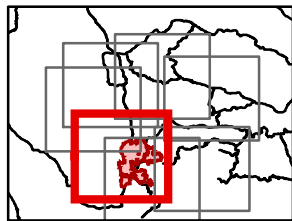
Cameron Peak

17,246 Acres
as of 2147 08/21

Div Z South Branch II



- Critical Assets
- Water Access
- Campground
- Picnic Site
- Trailhead
- Verizon COW
- Closure
- Dip Site
- Drop Point
- Helispot
- Fish Study Equipment
- Draft Site
- Other
- Branch Break
- Uncontrolled Fire Edge
- Completed Hand Line
- Completed Plow Line
- Fire Perimeter
- Closure Area
- Primary Routes
- Local or 4WD road
- Trail
- 600ft Retardant Avoidance Waterways
- Wilderness Areas



IAP

08/23/2020

Cameron Peak

17,246 Acres
as of 2147 08/21

Div Z North Branch II



- Critical Assets
- Campground
- Other Recreation Site
- Trailhead
- Dip Site
- Drop Point
- Helispot
- Division Break
- Uncontrolled Fire Edge
- Proposed Dozer Line
- Planned Fire Line
- Fire Perimeter
- Closure Area
- Primary Routes
- Local or 4WD road
- Trail
- Wilderness Areas

