

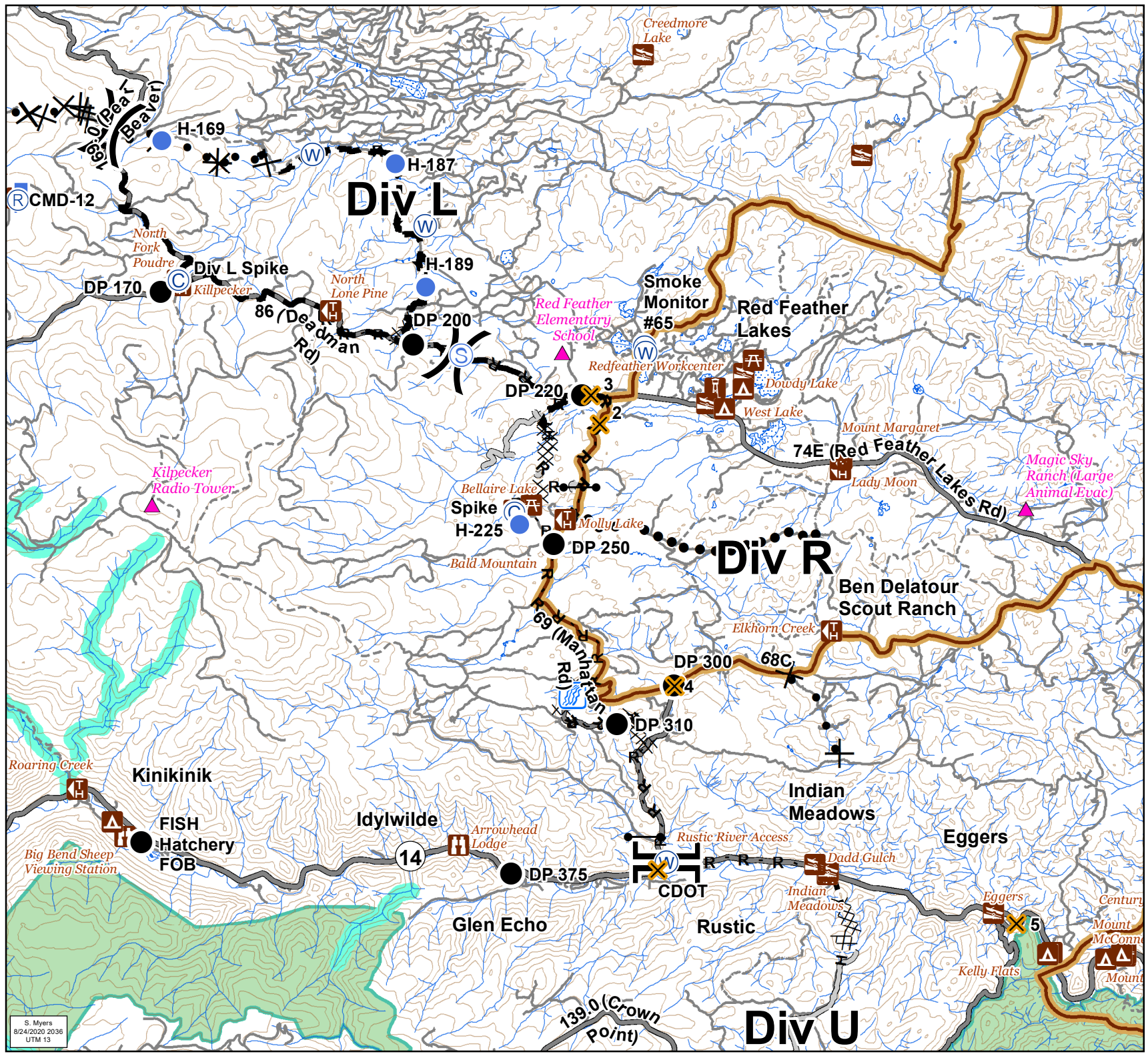
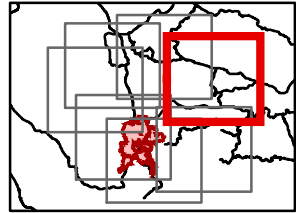
IAP  
08/25/2020

**Cameron Peak**  
20,118 Acres  
as of 2136 08/23

**Div L and R**  
**Branch II**



- Critical Assets
- Water Access
- Campground
- Day Use Area
- Picnic Site
- Other Recreation Site
- Trailhead
- Camp
- Closure
- Drop Point
- Gate
- Helispot
- Lookout
- Repeater
- Staging Area
- Water Source
- Other
- Division Break
- Branch Break
- Completed Dozer Line
- Completed Hand Line
- Road as Completed Line
- Access or Improved Road
- Proposed Dozer Line
- Planned Fire Line
- Planned Secondary Line
- Closure Area
- Primary Routes
- Local or 4WD road
- Trail
- 600ft Retardant Avoidance Waterways
- Wilderness Areas



S. Myers  
8/24/2020 2036  
UTM 13