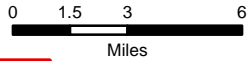


# IAP Index

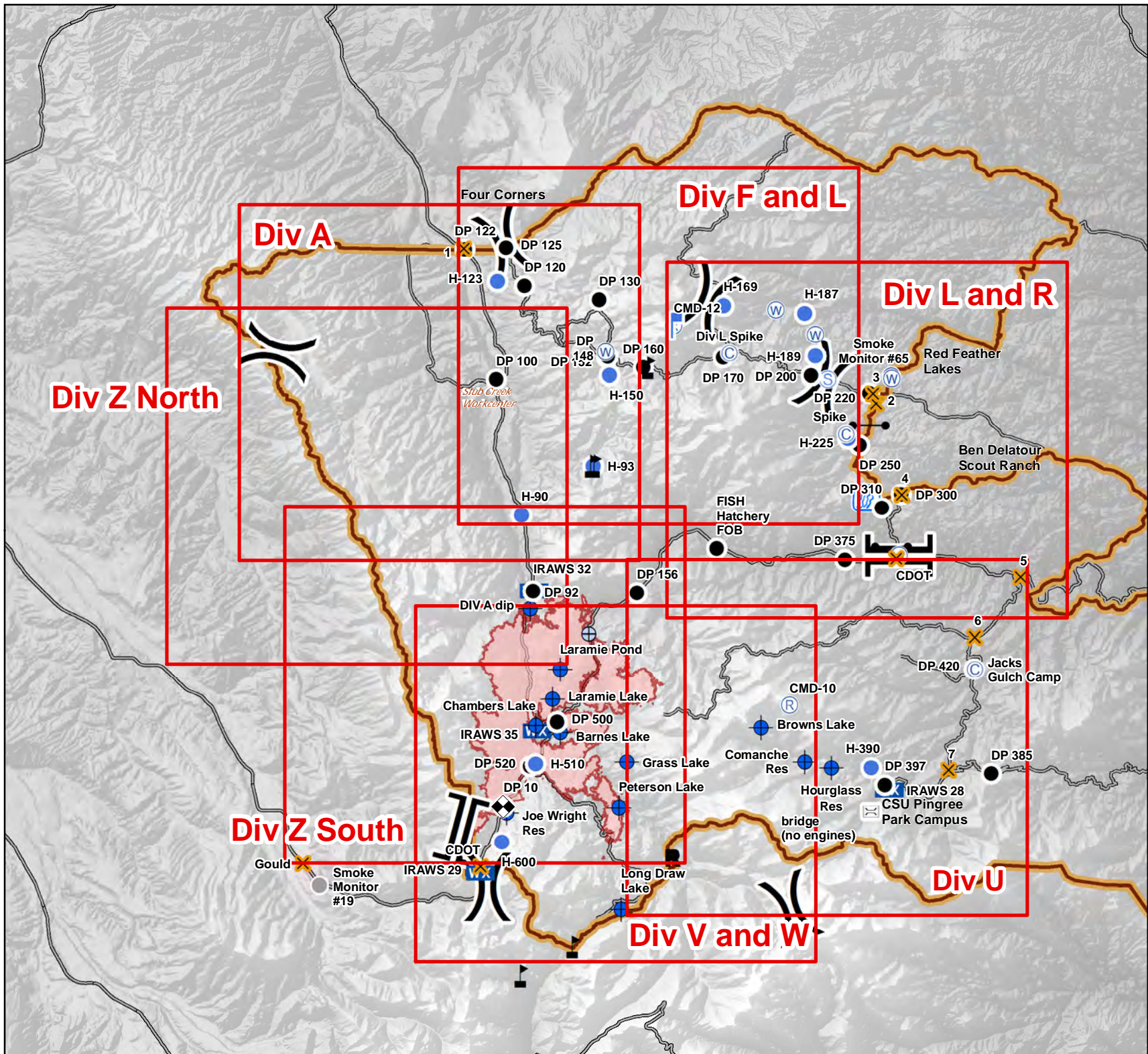
08/25/2020

**Cameron Peak**  
CO-ARF 000636  
20,118 Acres  
as of 2136 08/23



- Page Indicator
- Verizon COW
- Bridge
- Camp
- Closure
- Dip Site
- Drop Point
- Gate
- Helispot
- Lookout
- Mobile Weather Unit
- Repeater
- Fish Study Equipment
- Staging Area
- Stream Crossing
- Water Source
- Draft Site
- Value at Risk
- Other
- Division Break
- Branch Break
- Fire Perimeter
- Closure Area
- Major Roads

S. Myers  
8/24/2020 1957  
UTM 13





# IAP

08/25/2020

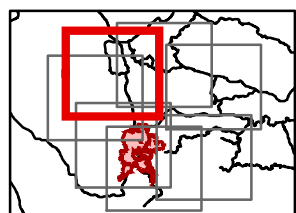
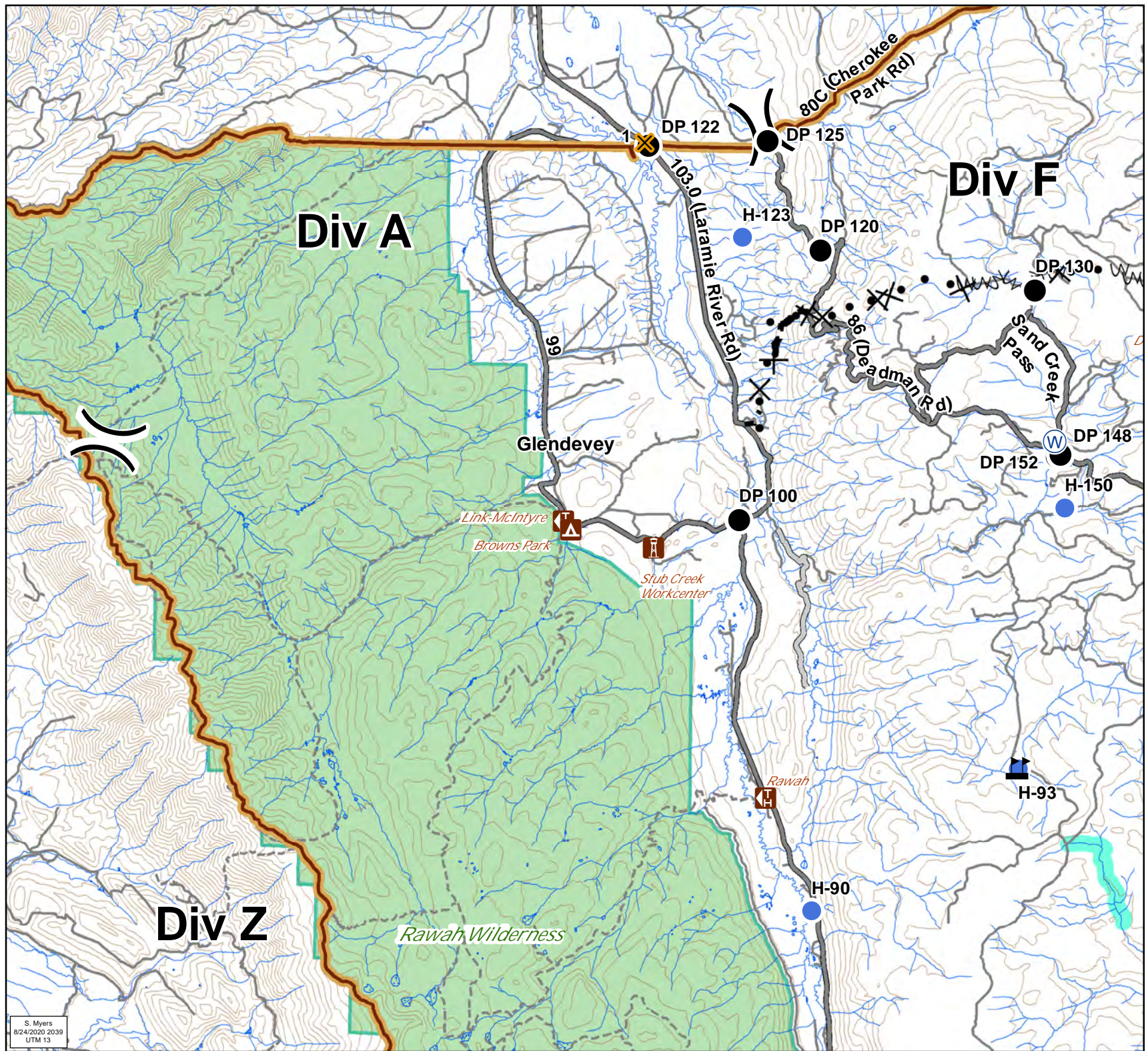
## Cameron Peak

20,118 Acres  
as of 2136 08/23

### Div A Branch II



- Campground
- Other Recreation Site
- Trailhead
- Closure
- Drop Point
- Helispot
- Water Source
- Value at Risk
- Division Break
- Access or Improved Road
- Proposed Dozer Line
- Fire Break Planned or Incomplete
- Planned Fire Line
- Closure Area
- Primary Routes
- Local or 4WD road
- Trail
- 600ft Retardant Avoidance Waterways
- Wilderness Areas



S. Myers  
8/24/2020 2039  
UTM 13



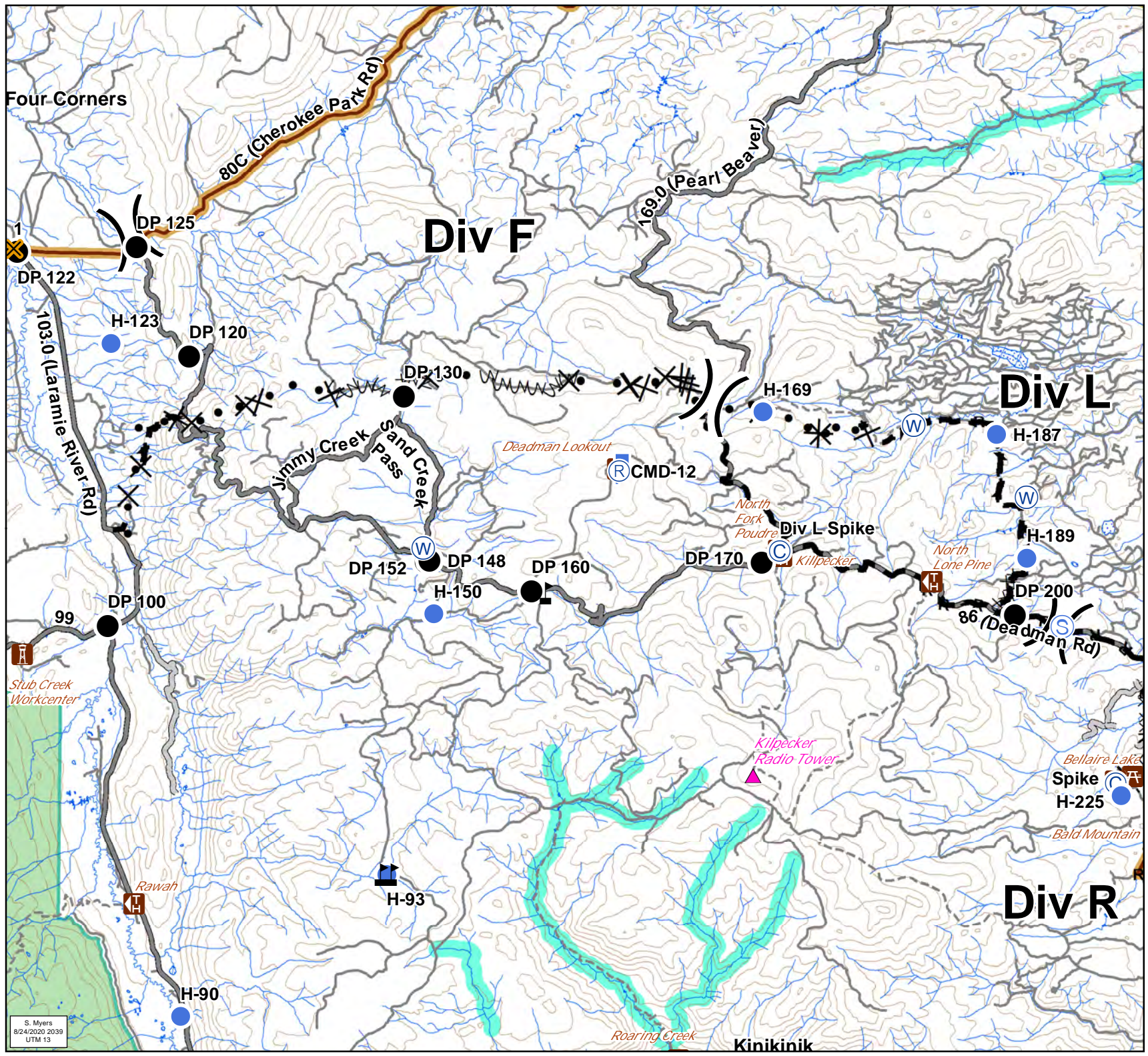
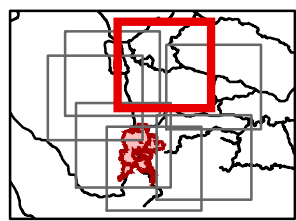
IAP  
08/25/2020

Cameron Peak  
20,118 Acres  
as of 2136 08/23

Div F and L  
Branch II



- Critical Assets
- Campground
- Picnic Site
- Other Recreation Site
- Trailhead
- Camp
- Closure
- Drop Point
- Gate
- Helispot
- Lookout
- Repeater
- Staging Area
- Water Source
- Value at Risk
- Division Break
- Completed Dozer Line
- H - H Completed Hand Line
- R - R Road as Completed Line
- Access or Improved Road
- Proposed Dozer Line
- Fire Break Planned or Incomplete
- Planned Fire Line
- Closure Area
- Primary Routes
- Local or 4WD road
- Trail
- 600ft Retardant Avoidance Waterways
- Wilderness Areas



S. Myers  
8/24/2020 2039  
UTM 13

Kinikini



IAP

08/25/2020

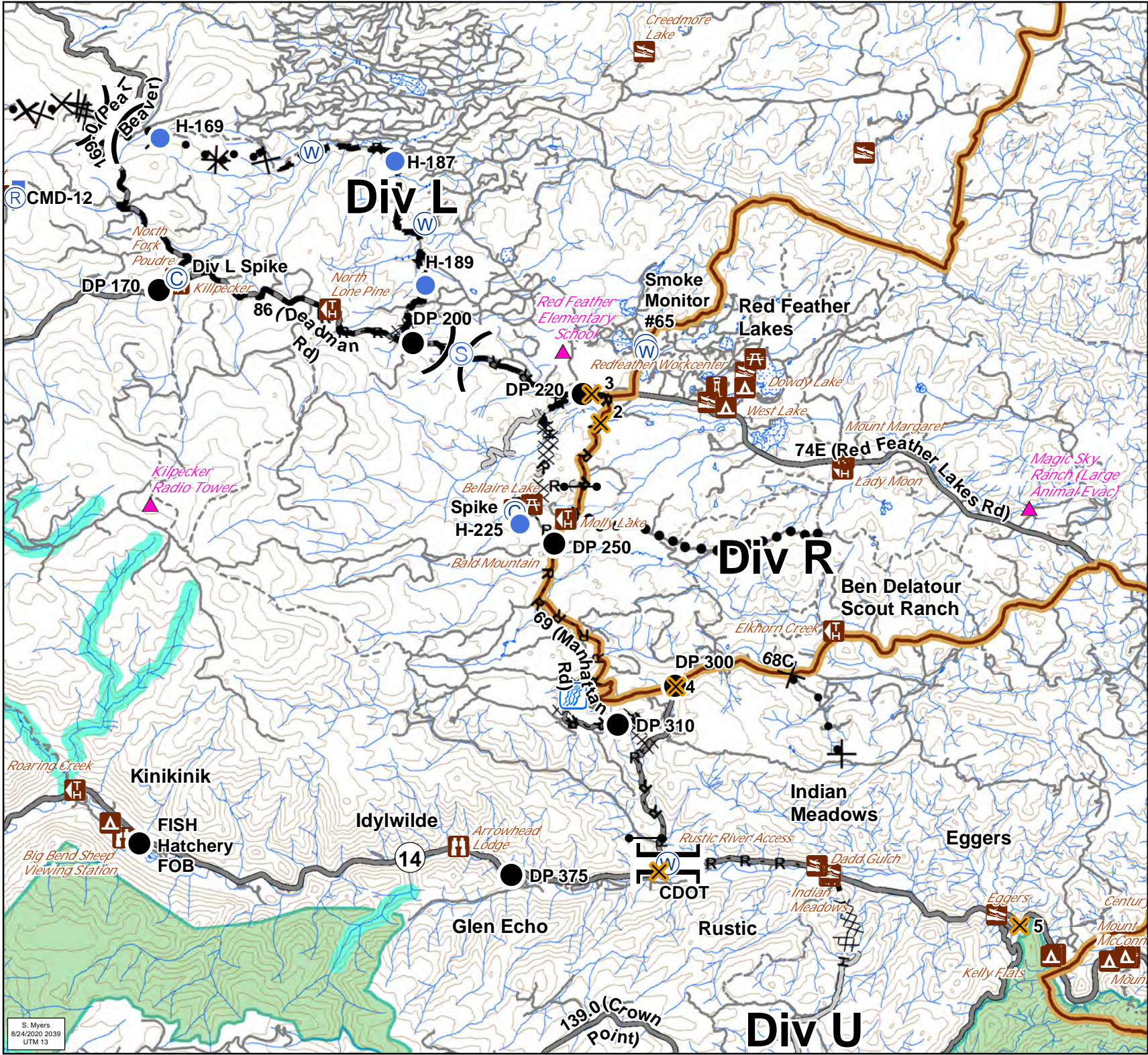
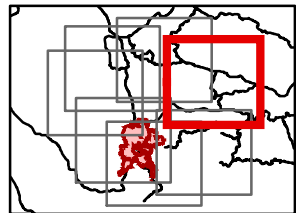
### Cameron Peak

20,118 Acres  
as of 2136 08/23

### Div L and R Branch II



- Critical Assets
- Water Access
- Campground
- Day Use Area
- Picnic Site
- Other Recreation Site
- Trailhead
- Camp
- Closure
- Drop Point
- Gate
- Helispot
- Lookout
- Repeater
- Staging Area
- Stream Crossing
- Water Source
- Other
- Division Break
- Branch Break
- Completed Dozer Line
- Completed Hand Line
- Road as Completed Line
- Access or Improved Road
- Proposed Dozer Line
- Planned Fire Line
- Planned Secondary Line
- Closure Area
- Primary Routes
- Local or 4WD road
- Trail
- 600ft Retardant Avoidance Waterways
- Wilderness Areas



S. Myers  
8/24/2020 2039  
UTM 13



IAP

08/25/2020

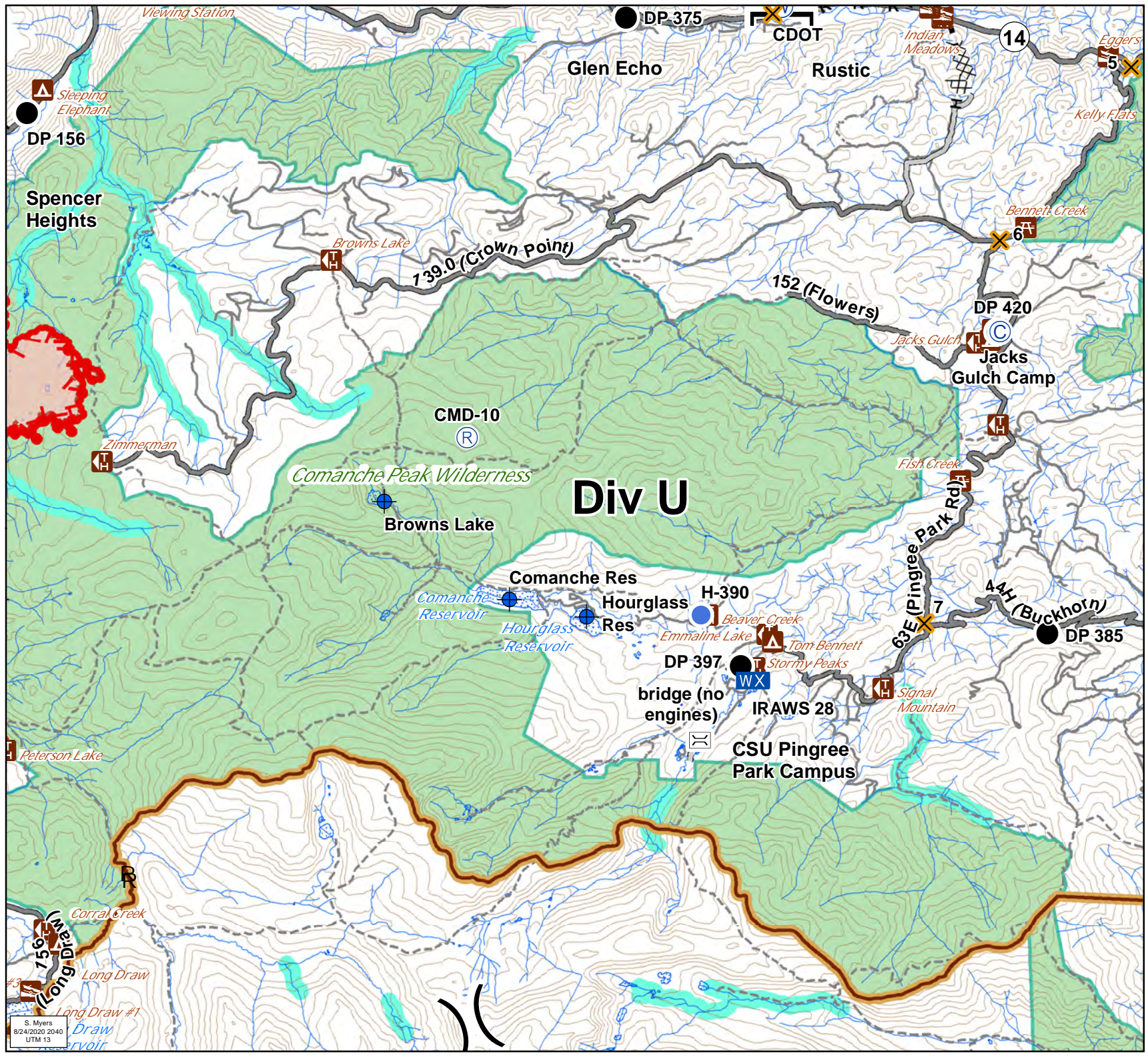
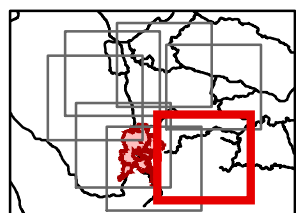
### Cameron Peak

20,118 Acres  
as of 2136 08/23

Div U  
Branch I



- Water Access
- Campground
- Picnic Site
- Trailhead
- Bridge
- Camp
- Closure
- Dip Site
- Drop Point
- Helispot
- Mobile Weather Unit
- Repeater
- Fish Study Equipment
- Division Break
- Branch Break
- Uncontrolled Fire Edge
- Completed Dozer Line
- Completed Hand Line
- Access or Improved Road
- Planned Fire Line
- Fire Perimeter
- Closure Area
- Primary Routes
- Local or 4WD road
- Trail
- 600ft Retardant Avoidance Waterways
- Wilderness Areas



S. Myers  
8/24/2020 2040  
UTM 13



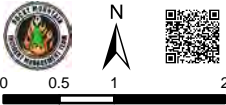
IAP

08/25/2020

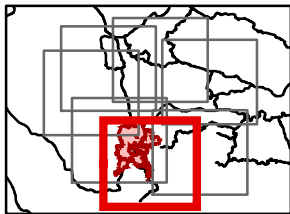
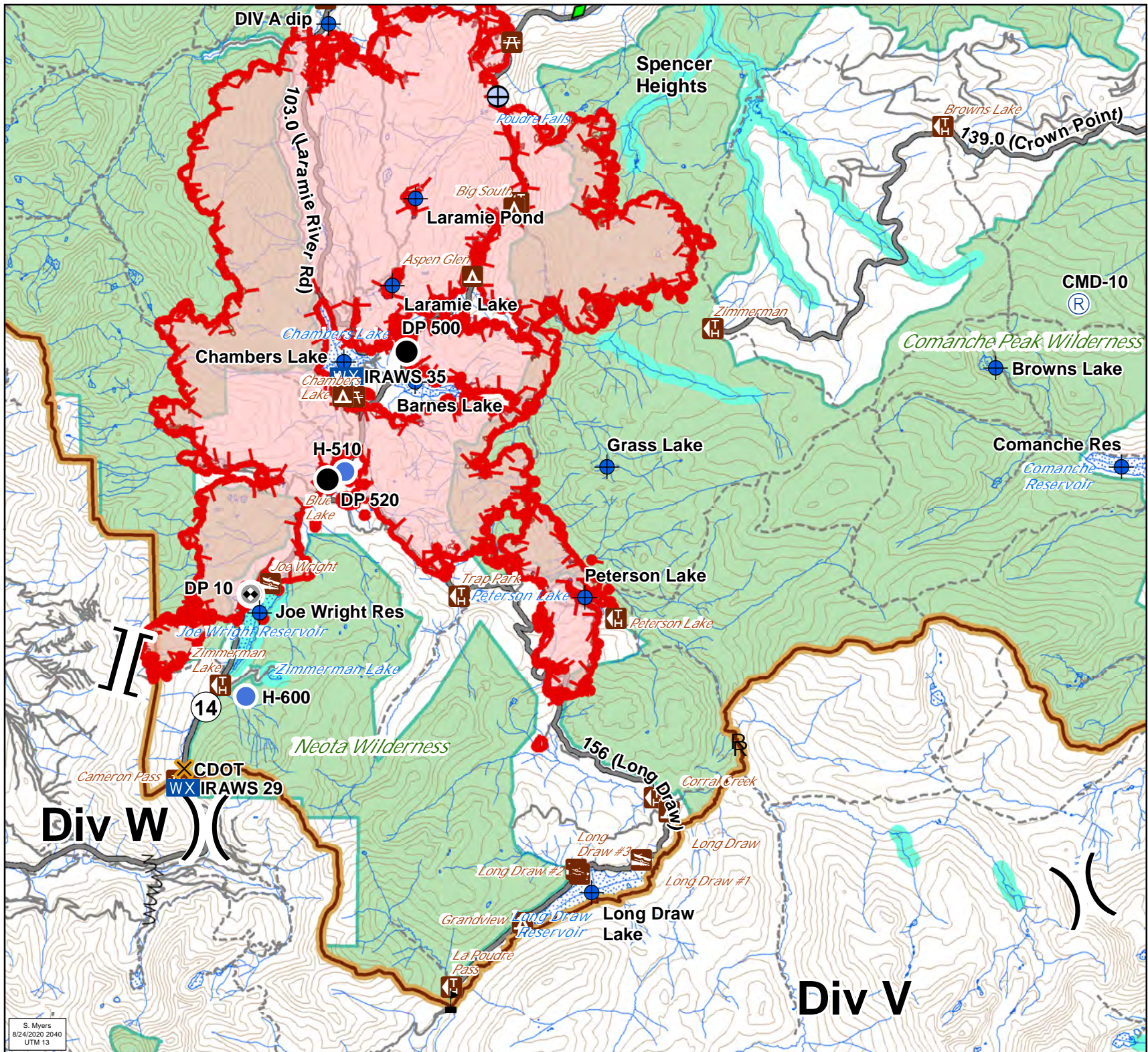
**Cameron Peak**

20,118 Acres  
as of 2136 08/23

**Div V and W  
Branch I**



- Water Access
- Campground
- Picnic Site
- Trailhead
- Verizon COW
- Closure
- Dip Site
- Drop Point
- Helispot
- Mobile Weather Unit
- Repeater
- Fish Study Equipment
- Draft Site
- Value at Risk
- Other
- Division Break
- Branch Break
- Uncontrolled Fire Edge
- Fire Break Planned or Incomplete
- Fire Perimeter
- Closure Area
- Primary Routes
- Local or 4WD road
- Trail
- 600ft Retardant Avoidance Waterways
- Wilderness Areas



S. Myers  
8/24/2020 2040  
UTM 13



IAP

08/25/2020

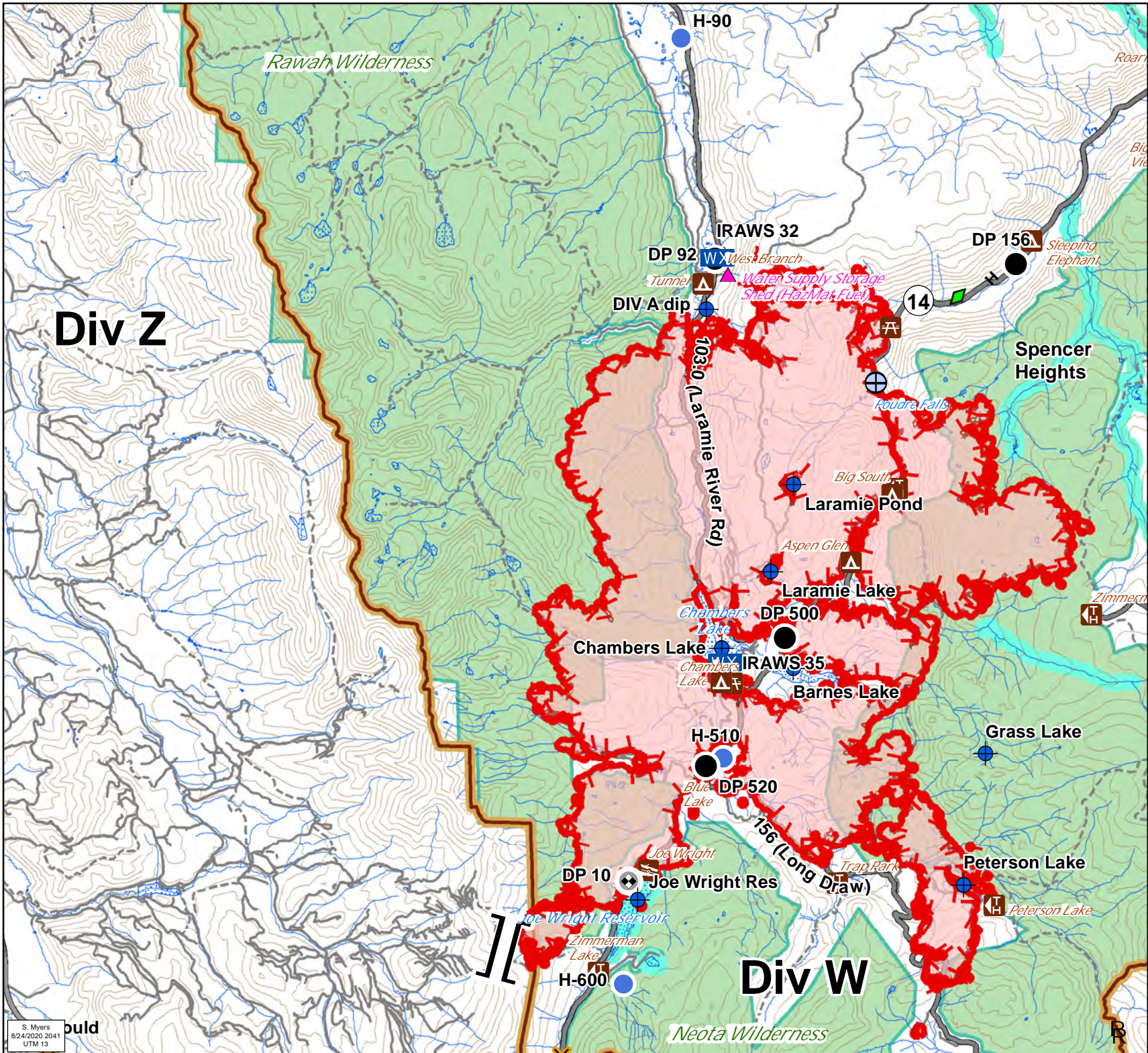
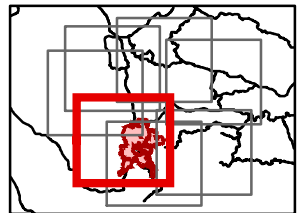
### Cameron Peak

20,118 Acres  
as of 2136 08/23

### Div Z South Branch II



- Critical Assets
- Water Access
- Campground
- Picnic Site
- Trailhead
- Verizon COW
- Closure
- Dip Site
- Drop Point
- Helispot
- Mobile Weather Unit
- Fish Study Equipment
- Draft Site
- Other
- Branch Break
- Uncontrolled Fire Edge
- Completed Hand Line
- Completed Plow Line
- Fire Perimeter
- Closure Area
- Primary Routes
- Local or 4WD road
- Trail
- 600ft Retardant Avoidance Waterways
- Wilderness Areas



S. Myers  
8/24/2020 2041  
UTM 13



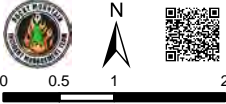
IAP

08/25/2020

### Cameron Peak

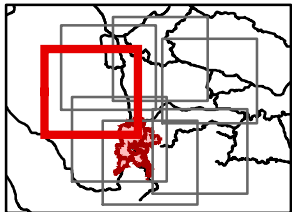
20,118 Acres  
as of 2136 08/23

### Div Z North Branch II



- Critical Assets
- Campground
- Other Recreation Site
- Trailhead
- Dip Site
- Drop Point
- Helispot
- Mobile Weather Unit
- Division Break

- Uncontrolled Fire Edge
- Access or Improved Road
- Proposed Dozer Line
- Planned Fire Line
- Fire Perimeter
- Closure Area
- Primary Routes
- Local or 4WD road
- Trail
- Wilderness Areas



S. Myers  
8/24/2020 2041  
UTM 13

