

Public Information

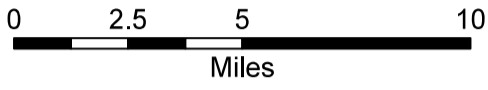
08/27/2020

IR 8/26/2020 @ 2230

Cameron Peak

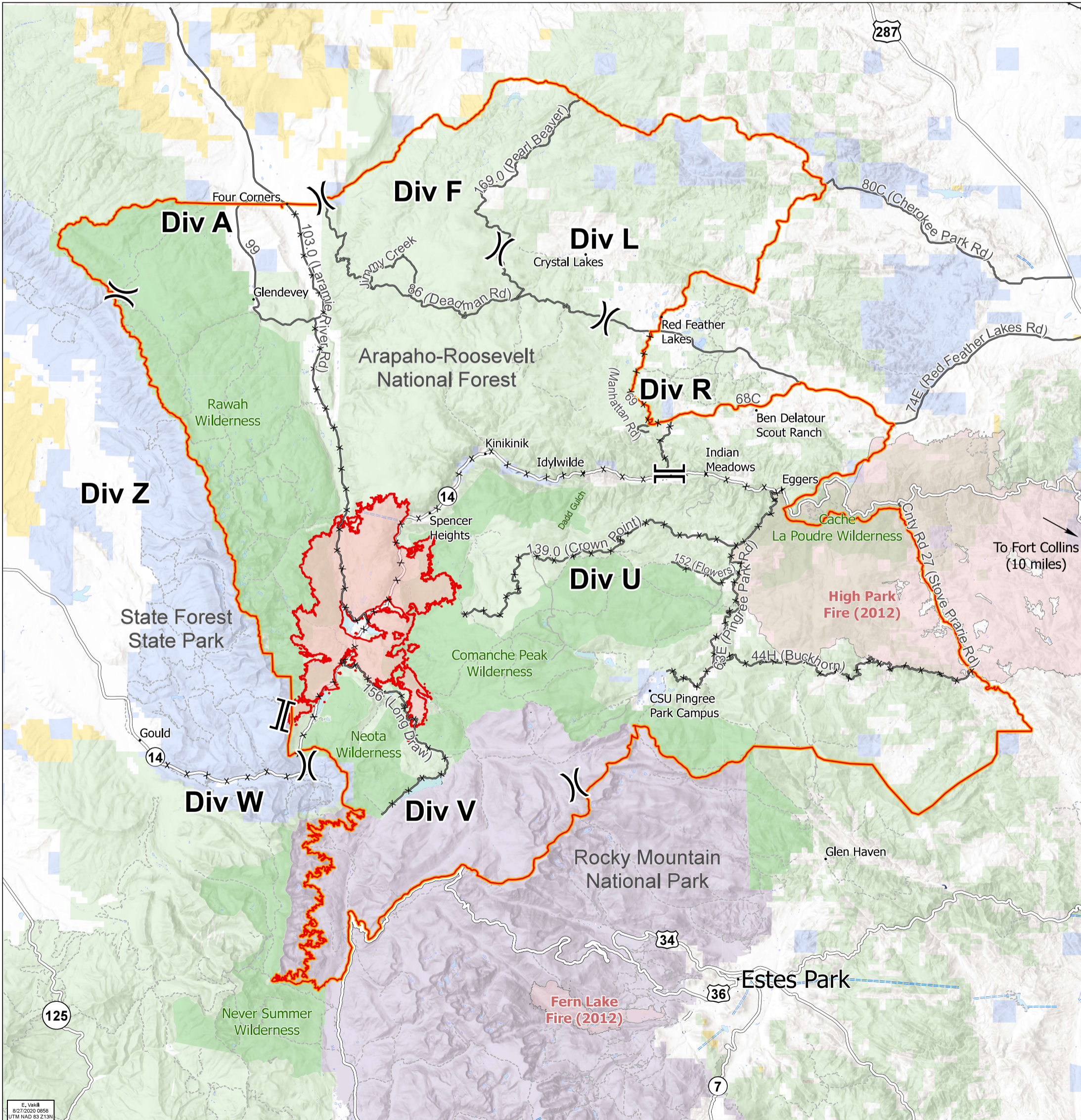
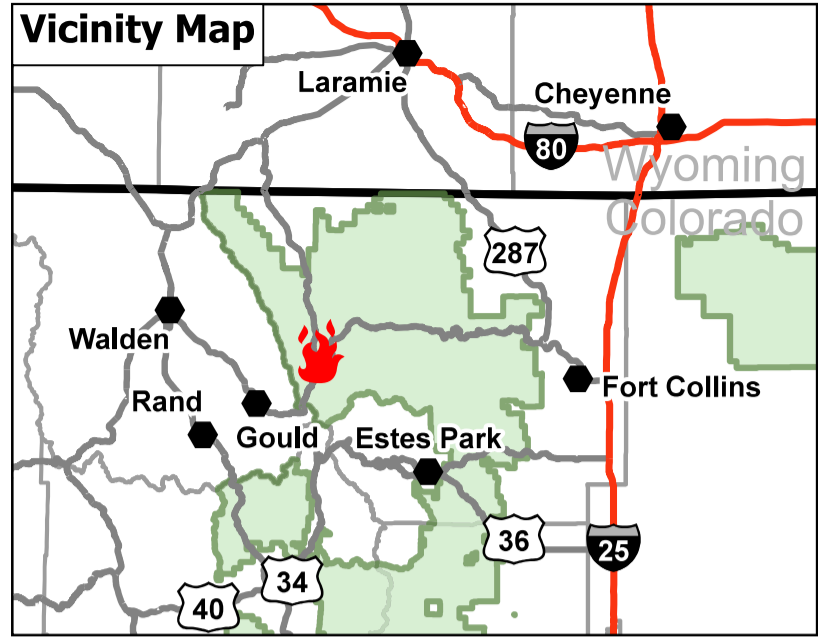
CO-ARF 00636

22,845 acres



- x Division Break
- || Branch Break
- Cameron Peak Fire
- Closure Area
- Fire History
- x Road Closure
- - - Trail
- == Highway or ramp
- Primary Routes
- Wilderness
- Forest Service
- Bureau of Land Management
- Private
- State
- National Park Service

Vicinity Map



E. Vekil
8/27/2020 0858
UTM NAD 83 213N