

Branch V
Cameron Peak
CO-ARF-636
29-Aug-2020

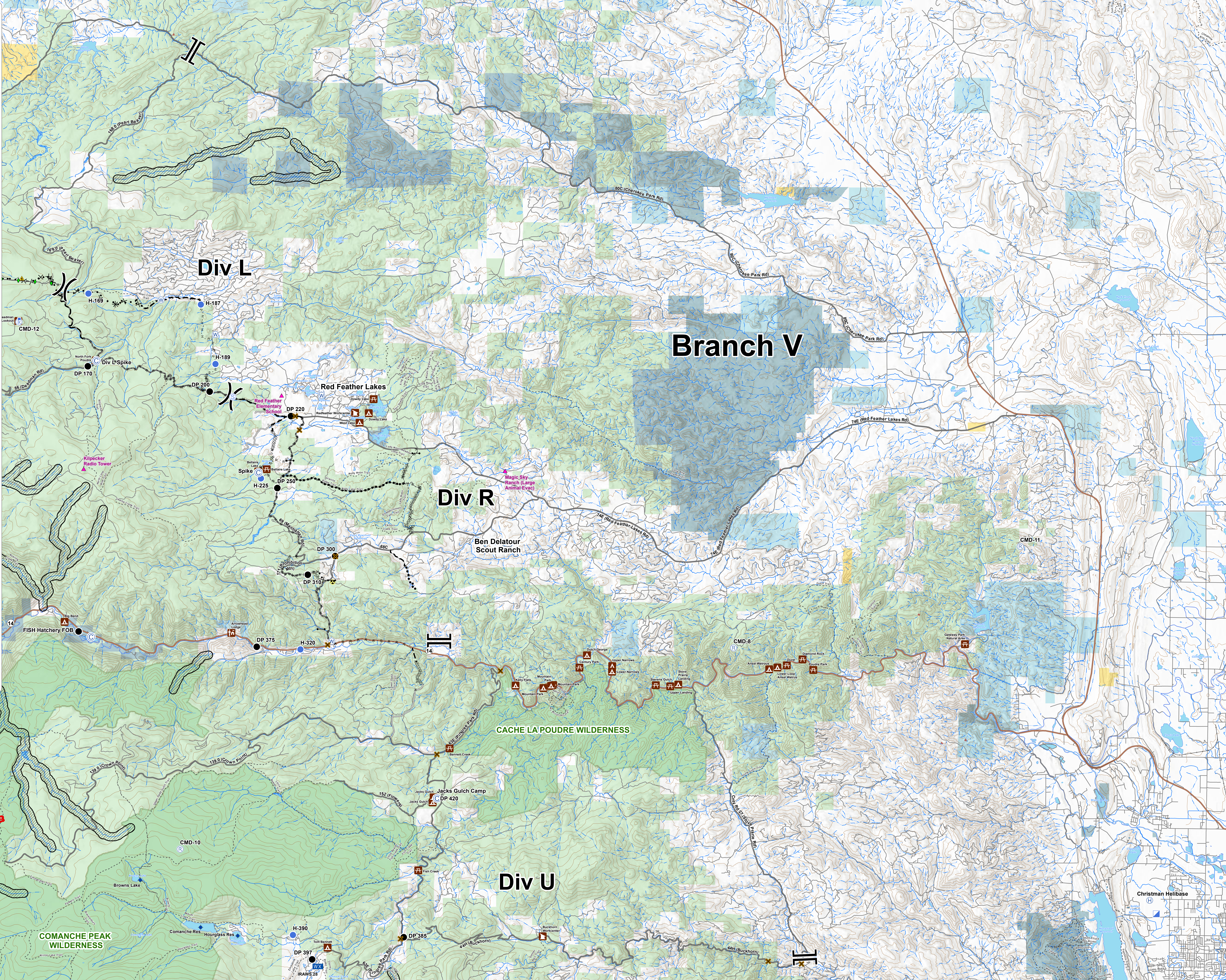
Appx 22,971 ac
at 27-Aug 23:00



0 1
Miles

- Camp
- Closure
- Dip Site
- Drop Point
- Gate
- Hazard
- Helibase
- Helispot
- Incident Command Post
- Lookout
- Mobile Weather Unit
- Repeater
- Safety Zone
- Staging Area
- Water Source
- Value at Risk
- Division Break
- Branch Break

- Uncontrolled Fire Edge
- Completed Dozer Line
- Completed Hand Line
- Road as Completed Line
- Access or Improved Road
- Completed Plow Line
- Proposed Dozer Line
- Planned Fire Line
- Planned Secondary Line
- Fire Area
- Critical Assets
- Campground
- Picnic Site
- Visitor Center
- Observation Site
- Work Center
- Primary Routes
- Highway or ramp
- Local connector
- Local or 4WD road
- Trail
- 600R Restraint Avoidance Waters
- Forest Service
- Bureau of Land Management
- Private
- State, County, City Areas
- State
- USFS Wilderness



Div L

Branch V

Div R

Div U

Red Feather Lakes

Ben Delatour Scout Ranch

CACHE LA POUFRE WILDERNESS

COMANCHE PEAK WILDERNESS

Christman Helibase

CMD-11

CMD-8

CMD-10

CMD-12

DP 420

DP 375

DP 310

DP 250

DP 220

DP 200

DP 170

DP 397

DP 385

H-390

H-320

H-225

H-189

H-187

H-169

138.0 (Crown Point)

138.0 (Crown Point)

152 (Flowers)

24H (Buckhorn)

44H (Buckhorn)

44H (Buckhorn)

68C

74E (Red Feather Lakes Rd)

80C (Cherokee Park Rd)

80C (Cherokee Park Rd)

80C (Cherokee Park Rd)

80C (Cherokee Park Rd)

138.0 (Pearl Beach)

169.0 (Pearl Beach)

86 (De Laine Rd)

14

14

66 (Crown Point)

66 (Crown Point)

44H (Buckhorn)

44H (Buckhorn)

44H (Buckhorn)

44H (Buckhorn)

44H (Buckhorn)

44H (Buckhorn)

44H (Buckhorn)

44H (Buckhorn)

44H (Buckhorn)

44H (Buckhorn)

44H (Buckhorn)

44H (Buckhorn)

44H (Buckhorn)

44H (Buckhorn)

44H (Buckhorn)

44H (Buckhorn)

44H (Buckhorn)

44H (Buckhorn)

44H (Buckhorn)

44H (Buckhorn)

44H (Buckhorn)