

Air Operations

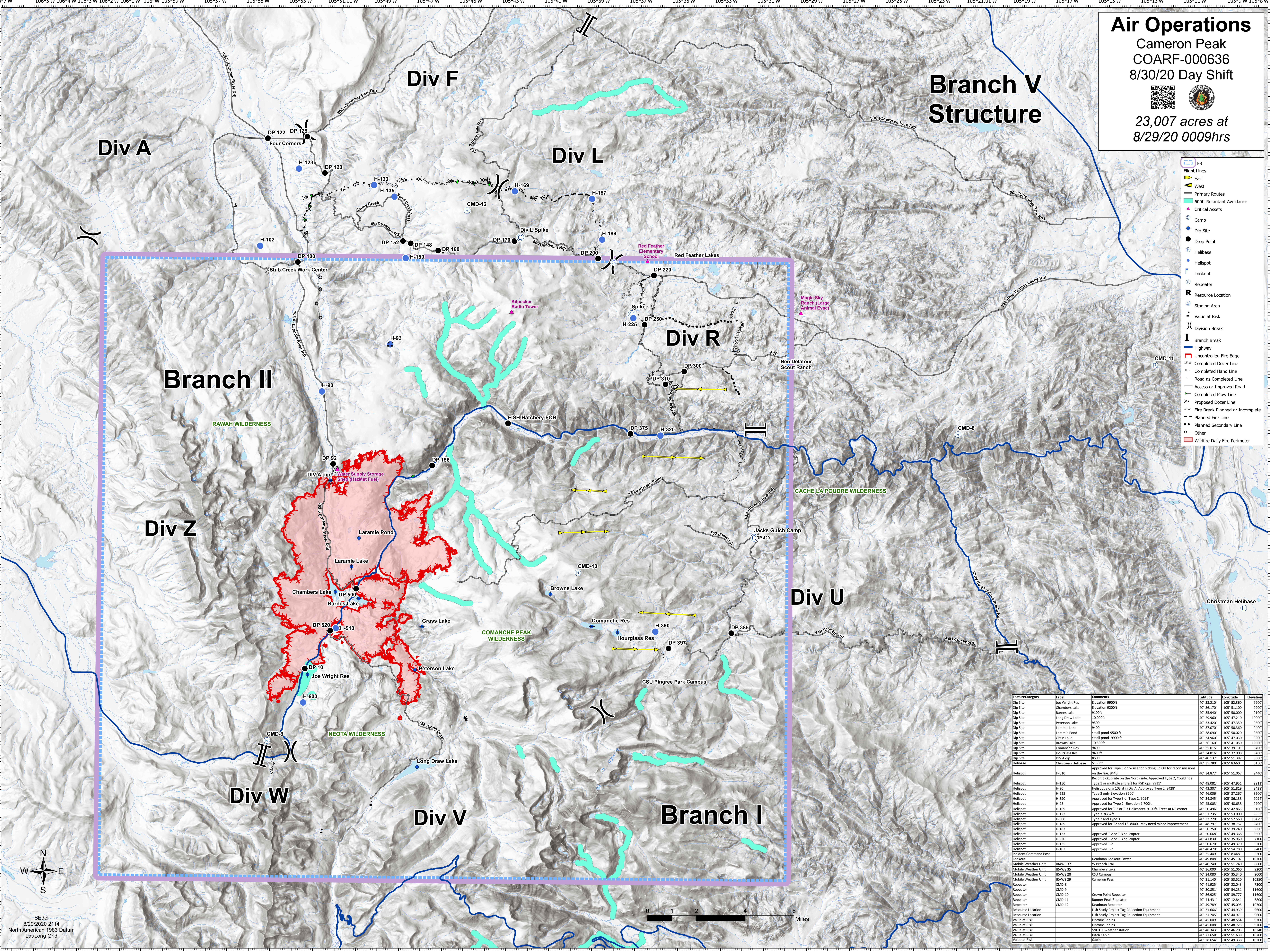
Cameron Peak
COARF-000636
8/30/20 Day Shift

23,007 acres at
8/29/20 0009hrs



- TFR
- Flight Lines
- East
- West
- Primary Routes
- 600ft Retardant Avoidance
- Critical Assets
- Camp
- Dip Site
- Drop Point
- Helibase
- Helipod
- Lookout
- Repeater
- Resource Location
- Staging Area
- Value at Risk
- Division Break
- Branch Break
- Highway
- Uncontrolled Fire Edge
- Completed Dozer Line
- Completed Hand Line
- Road as Completed Line
- Access or Improved Road
- Completed Plow Line
- Proposed Plow Line
- Fire Break Planned or Incomplete
- Planned Fire Line
- Planned Secondary Line
- Other
- Wildfire Daily Fire Perimeter

Branch V Structure



FeatureCategory	Label	Comments	Latitude	Longitude	Elevation
Dip Site	Joe Wright Res	Elevation 9900ft	40° 33.210'	-105° 52.360'	9900
Dip Site	Chambers Lake	Elevation 9200ft	40° 36.170'	-105° 51.100'	9200
Dip Site	Barnes Lake	9100ft	40° 35.940'	-105° 50.000'	9100
Dip Site	Long Draw Lake	10,000ft	40° 29.960'	-105° 47.210'	10000
Dip Site	Peterson Lake	9500	40° 33.000'	-105° 49.350'	9500
Dip Site	Laramie Lake	9400	40° 37.070'	-105° 50.360'	9400
Dip Site	Laramie Pond	small pond-9500 ft	40° 38.090'	-105° 50.020'	9500
Dip Site	Grass Lake	small pond-9900 ft	40° 34.960'	-105° 47.030'	9900
Dip Site	Browns Lake	10,500ft	40° 36.160'	-105° 41.000'	10500
Dip Site	Comanche Res	9400	40° 35.015'	-105° 39.101'	9400
Dip Site	Hourglass Res	9400ft	40° 34.816'	-105° 37.908'	9400
Dip Site	Div A dip	8600	40° 40.117'	-105° 51.387'	8600
Helibase	Christman Helibase	5150 ft	40° 35.780'	-105° 46.660'	5150
Helipod	H-510	Approved for Type 3 only- use for picking up OH for recon missions on the fire 3402	40° 34.877'	-105° 51.067'	9440
Helipod	H-150	Recon pickup site on the North side. Approved Type 2. Could fit a Type 1 or multiple aircraft for PSD ops. 9911	40° 48.081'	-105° 47.951'	9911
Helipod	H-300	Helipod along 1030ft in Div A. Approved Type 2. 8428	40° 43.807'	-105° 51.819'	8428
Helipod	H-225	Type 3 only Elevation 8500'	40° 46.006'	-105° 51.267'	8500
Helipod	H-390	Approved for Type 3 or Type 2. 9094	40° 34.845'	-105° 36.138'	9094
Helipod	H-93	Approved for Type 2. Elevation 9,700ft	40° 45.003'	-105° 48.638'	9700
Helipod	H-169	Approved for T-2 or T-3 helicopter. 9100ft. Trees at NE corner	40° 50.096'	-105° 51.865'	9100
Helipod	H-123	Type 3. 8362ft	40° 51.235'	-105° 53.000'	8362
Helipod	H-600	Type 2 and Type 3	40° 32.220'	-105° 52.560'	10429
Helipod	H-189	Approved for T-2 or T-3 helicopter. 8400'	40° 48.787'	-105° 48.757'	8400
Helipod	H-187	Approved for T-2 and T-3. 8400'. May need minor improvement	40° 50.250'	-105° 39.240'	8500
Helipod	H-133	Approved T-2 or T-3 helicopter	40° 50.668'	-105° 49.368'	9500
Helipod	H-320	Approved T-2 or T-3 helicopter	40° 41.830'	-105° 54.960'	7100
Helipod	H-135	Approved T-2	40° 50.670'	-105° 49.370'	5200
Helipod	H-102	Approved T-2	40° 48.470'	-105° 54.780'	8400
Lookout	Incident Command Post	40° 35.940'	-105° 48.448'	5200	
Lookout	Deadman Lookout Tower	40° 49.808'	-105° 45.107'	10700	
Mobile Weather Unit	IRAWS 32	W Branch Trail	40° 40.740'	-105° 51.240'	8600
Mobile Weather Unit	IRAWS 35	Chambers Lake	40° 36.000'	-105° 51.060'	8200
Mobile Weather Unit	IRAWS 28	CSU Campus	40° 34.060'	-105° 45.107'	8200
Mobile Weather Unit	IRAWS 29	Cameron Pass	40° 31.140'	-105° 53.520'	10350
Repeater	CMD-8	40° 41.925'	-105° 22.043'	7300	
Repeater	CMD-9	40° 30.851'	-105° 54.231'	11600	
Repeater	CMD-10	40° 36.925'	-105° 39.777'	11600	
Repeater	CMD-11	Bonner Peak Repeater	40° 44.431'	-105° 12.841'	6800
Repeater	CMD-12	Deadman Repeater	40° 49.789'	-105° 45.095'	10700
Resource Location	Fish Study Project Tag Collection Equipment	40° 31.666'	-105° 44.919'	9600	
Resource Location	Fish Study Project Tag Collection Equipment	40° 31.745'	-105° 44.971'	9600	
Value at Risk	Historic Cabins	40° 45.009'	-105° 48.554'	9700	
Value at Risk	Historic Cabins	40° 45.008'	-105° 48.721'	9700	
Value at Risk	SNOTEL weather station	40° 48.347'	-105° 46.203'	10240	
Value at Risk	Ditch Cabin	40° 27.658'	-105° 51.638'	10200	
Value at Risk	Cabin	40° 28.654'	-105° 49.338'	10200	

SEdel
8/29/2020 2114
North American 1983 Datum
Lat/Long Grid

