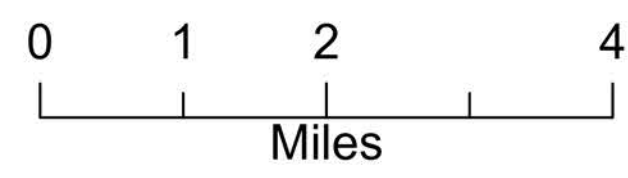


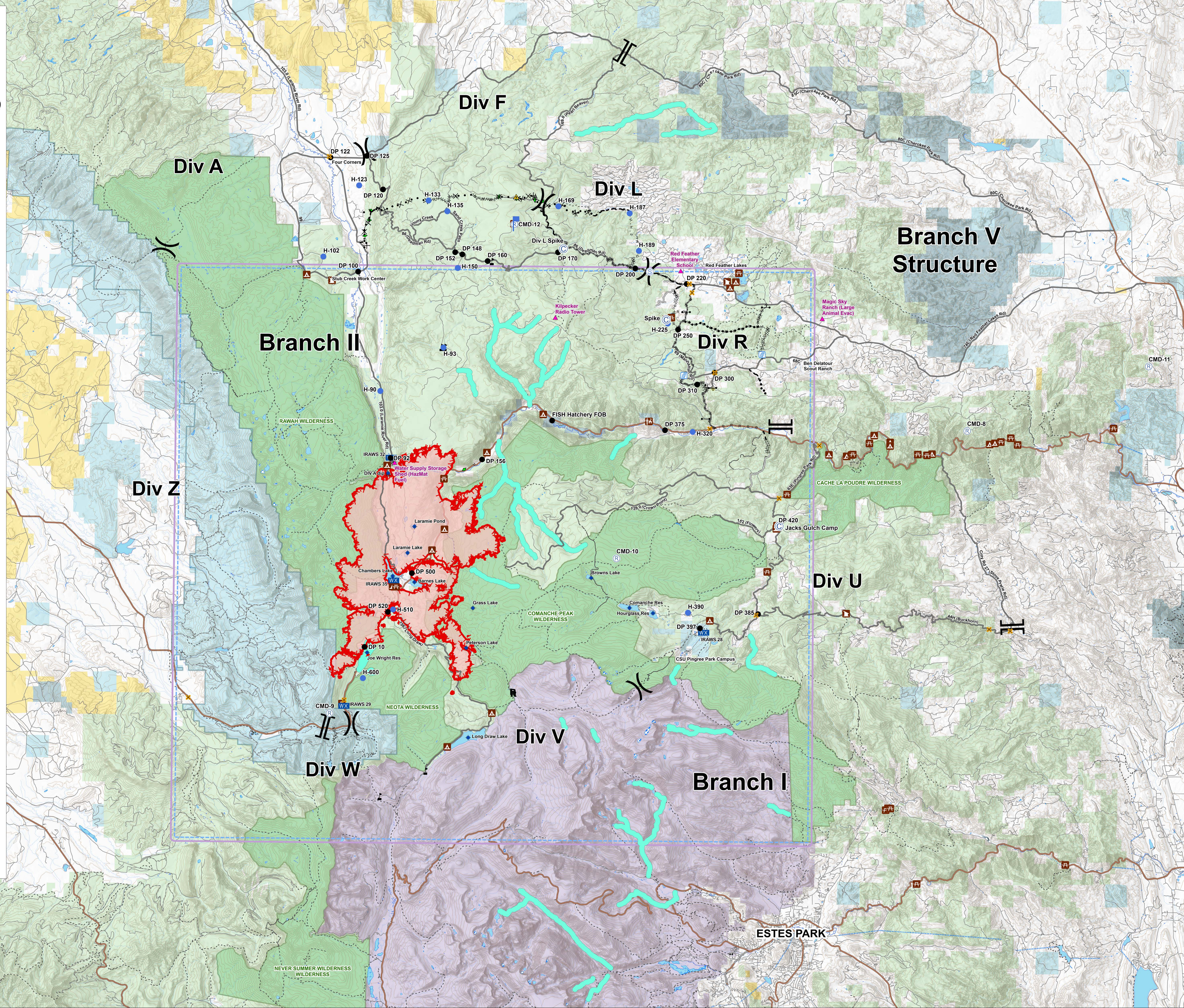
# Operations

08/30/2020 Day

Cameron Peak  
CO-ARF 000636  
23,007 Acres  
as of 0009 on 08/29



- Critical Assets
- Campground
- Picnic Site
- Visitor Center
- Observation Site
- Work Center
- Event Point**
- Bridge
- Camp
- Closure
- Dip Site
- Drop Point
- Hazard
- Helispot
- Lookout
- Mobile Weather Unit
- Repeater
- R** Resource Location
- Safety Zone
- Staging Area
- Stream Crossing
- Value at Risk
- Verizon COW
- Division Break
- Branch Break
- TFR
- 600ft Retardant Avoidance Waterways
- Uncontrolled Fire Edge
- Completed Dozer Line
- Completed Hand Line
- Road as Completed Line
- Access or Improved Road
- Completed Plow Line
- Proposed Dozer Line
- Fire Break Planned or Incomplete
- Planned Fire Line
- Planned Secondary Line
- Primary Routes
- Highway or ramp
- Local connector
- Local or 4WD road
- Trail
- Forest Service
- Bureau of Land Management
- Private
- State, County, City, Areas
- State
- National Park Service (Rocky Mtn National Park)
- US Fish and Wildlife Service
- Other Federal
- State Forest
- USFS Wilderness
- Wildfire Daily Fire Perimeter



## Branch V Structure

## Branch II

## Div R

## Div U

## Div V

## Branch I

## Div W

## Div A

## Div F

## Div L

## ESTES PARK