

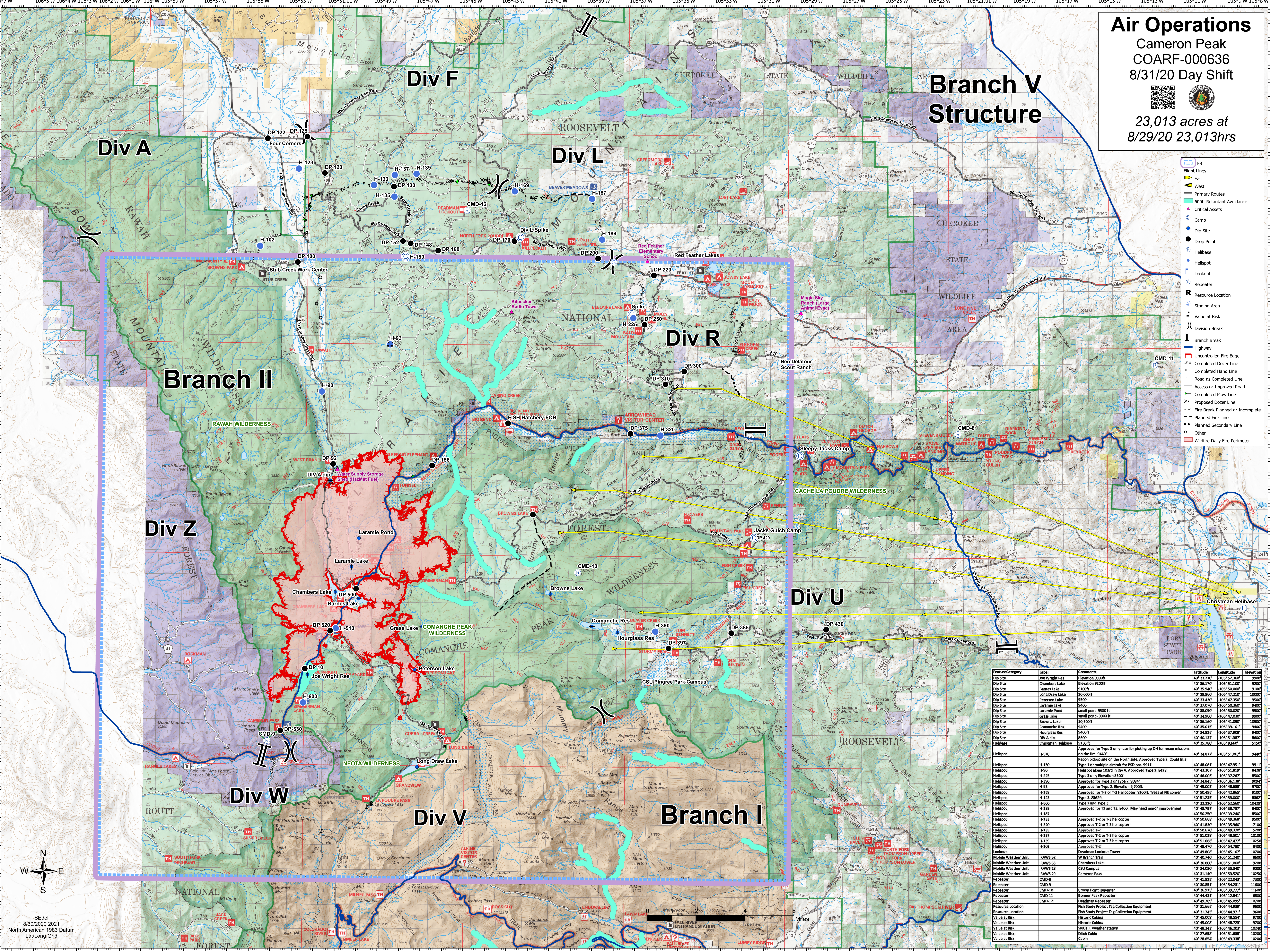
Air Operations

Cameron Peak
COARF-000636
8/31/20 Day Shift



23,013 acres at
8/29/20 23,013hrs

- TFR
- Flight Lines
- East
- West
- Primary Routes
- 600ft Retardant Avoidance
- Critical Assets
- Camp
- Dip Site
- Drop Point
- Helibase
- Helipoint
- Lookout
- Repeater
- Resource Location
- Staging Area
- Value at Risk
- Division Break
- Branch Break
- Highway
- Uncontrolled Fire Edge
- Completed Dozer Line
- Completed Hand Line
- Road as Completed Line
- Access or Improved Road
- Completed Plow Line
- Proposed Dozer Line
- Fire Break Planned or Incomplete
- Planned Fire Line
- Secondary Fire Line
- Other
- Wildfire Daily Fire Perimeter



Feature/Category	Label	Comments	Latitude	Longitude	Elevation
Dip Site	Joe Wright Res	Elevation 9900ft	40° 13.210'	-105° 52.367'	9900'
Dip Site	Chambers Lake	Elevation 9200ft	40° 36.170'	-105° 51.100'	9200'
Dip Site	Barnes Lake	9100ft	40° 35.940'	-105° 50.000'	9100'
Dip Site	Long Draw Lake	10,000ft	40° 29.960'	-105° 47.210'	10000'
Dip Site	Peterson Lake	9900	40° 13.250'	-105° 47.350'	9900'
Dip Site	Laramie Lake	9400	40° 37.070'	-105° 50.360'	9400'
Dip Site	Laramie Pond	small pond 9500 ft	40° 38.090'	-105° 50.020'	9500'
Dip Site	Grass Lake	small pond 9900 ft	40° 24.960'	-105° 47.030'	9900'
Dip Site	Comanche Res	10,500ft	40° 36.160'	-105° 41.050'	10500'
Dip Site	Hourglass Res	9400ft	40° 35.015'	-105° 39.101'	9400'
Dip Site	Storhy Res	9400ft	40° 34.816'	-105° 37.908'	9400'
Dip Site	DIV A dip	8600	40° 46.137'	-105° 51.387'	8600'
Dip Site	Christman Helibase	8150 ft	40° 35.780'	-105° 48.667'	8150'
Helipoint	H-510	Approved for Type 3 only- use for picking up OH for recon missions on the fire. 9400'	40° 34.877'	-105° 51.067'	9400'
Helipoint	H-150	Recon pickup site on the North side. Approved Type 2, Could it fit a Type 1 or multiple aircraft for PSD ops. 9911'	40° 48.081'	-105° 47.951'	9911'
Helipoint	H-90	Helipoint along 103rd in Div A. Approved Type 2, 8428'	40° 43.307'	-105° 51.819'	8428'
Helipoint	H-275	Type 3 only Elevation 8500'	40° 46.006'	-105° 37.267'	8500'
Helipoint	H-390	Approved for Type 3 or Type 2, 9094'	40° 24.845'	-105° 36.136'	9094'
Helipoint	H-93	Approved for Type 2, Elevation 9,700ft.	40° 45.023'	-105° 48.638'	9700'
Helipoint	H-189	Approved for T-2 or T-3 Helicopter. 9100ft. Trees at NE corner	40° 50.496'	-105° 42.865'	9100'
Helipoint	H-123	Type 3, 8362ft	40° 51.235'	-105° 53.000'	8362'
Helipoint	H-800	Type 2 and Type 3	40° 32.230'	-105° 52.960'	10429'
Helipoint	H-188	Approved for T-2 and T-3 Helicopter. 8400ft. May need minor improvement	40° 46.797'	-105° 38.757'	8400'
Helipoint	H-187	Approved for T-2 and T-3 Helicopter. 8500ft.	40° 50.250'	-105° 39.240'	8500'
Helipoint	H-133	Approved T-2 or T-3 helicopter	40° 50.668'	-105° 49.368'	9900'
Helipoint	H-320	Approved T-2 or T-3 helicopter	40° 41.830'	-105° 35.960'	7100'
Helipoint	H-135	Approved T-2 or T-3 helicopter	40° 50.670'	-105° 49.370'	9300'
Helipoint	H-137	Approved T-2 or T-3 helicopter	40° 51.039'	-105° 48.501'	10100'
Helipoint	H-139	Approved T-2 or T-3 helicopter	40° 51.088'	-105° 47.477'	10250'
Helibase	H-189	Approved	40° 48.474'	-105° 54.787'	8400'
Lookout	H-189	Deadman Lookout Tower	40° 49.808'	-105° 45.107'	10700'
Mobile Weather Unit	IRAWS 32	W Branch Trail	40° 40.740'	-105° 51.240'	8600'
Mobile Weather Unit	IRAWS 35	Chambers Lake	40° 36.000'	-105° 51.060'	9200'
Mobile Weather Unit	IRAWS 38	CSU Campus	40° 34.060'	-105° 35.940'	9000'
Mobile Weather Unit	IRAWS 29	Cameron Pass	40° 11.140'	-105° 43.320'	10260'
Repeater	CMD-8	Cameron Pass	40° 41.925'	-105° 22.043'	7300'
Repeater	CMD-9	Crown Point Repeater	40° 30.851'	-105° 54.231'	11600'
Repeater	CMD-10	Recon Peak Repeater	40° 35.925'	-105° 39.727'	11800'
Repeater	CMD-11	Deadman Repeater	40° 44.831'	-105° 12.941'	8900'
Repeater	CMD-12	Deadman Repeater	40° 49.789'	-105° 45.095'	10700'
Resource Location		Fish Study Project Tag Collection Equipment	40° 31.666'	-105° 44.939'	9600'
Resource Location		Fish Study Project Tag Collection Equipment	40° 31.745'	-105° 44.971'	9600'
Value at Risk		Historic Cabins	40° 49.029'	-105° 48.544'	9700'
Value at Risk		Historic Cabins	40° 45.008'	-105° 48.723'	9700'
Value at Risk		SKNOTL weather station	40° 48.343'	-105° 46.203'	10240'
Value at Risk		Ditch Cabin	40° 27.658'	-105° 51.838'	10000'
Value at Risk		Cabin	40° 28.654'	-105° 49.338'	10000'

SeDel
8/30/2020 2021
North American 1983 Datum
Lat/Long Grid

