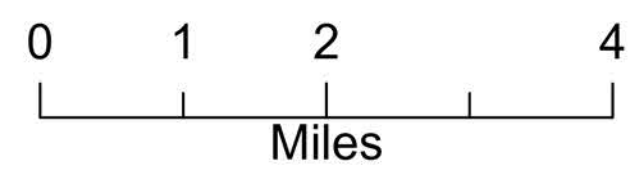
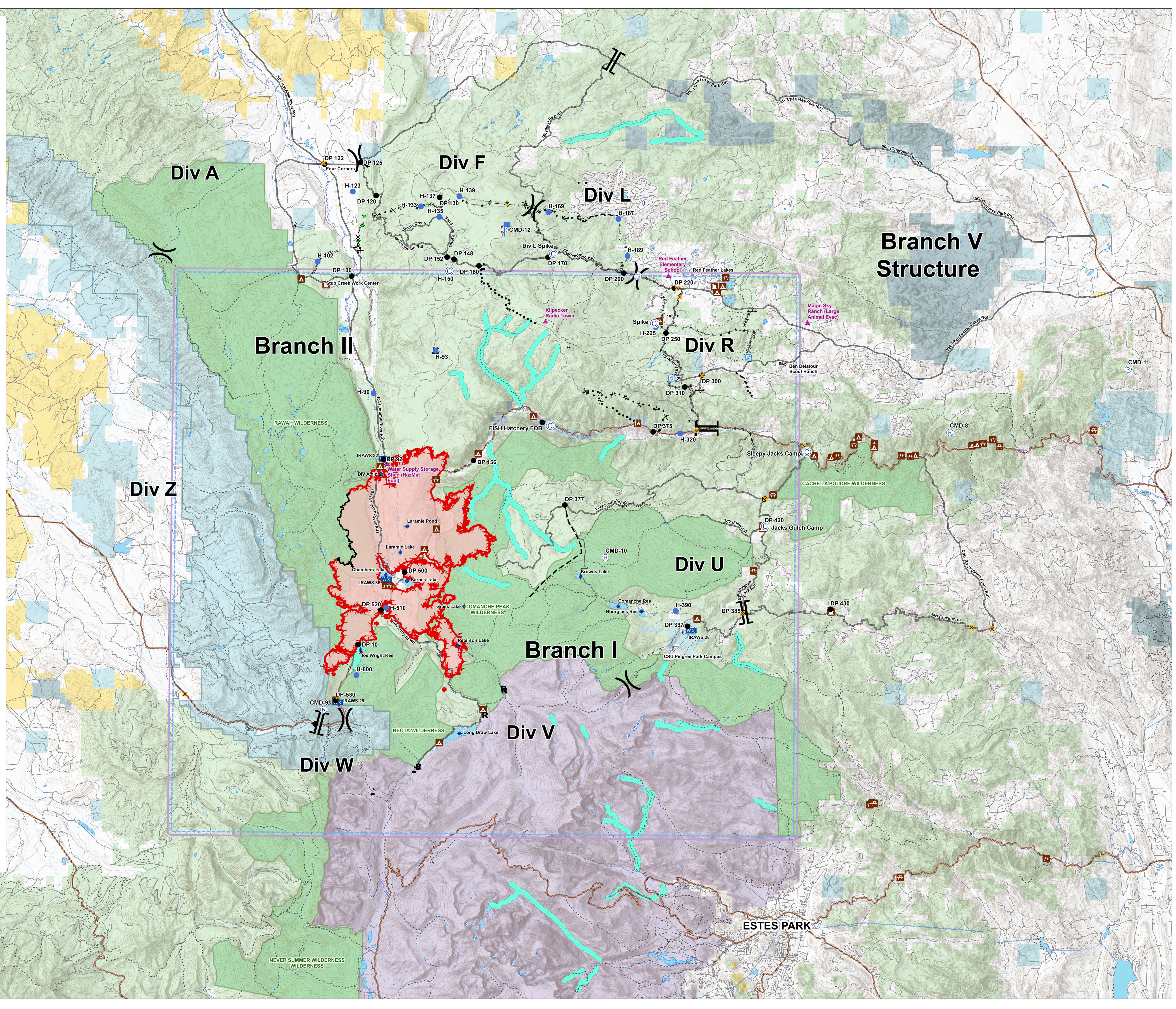


Operations
09/01/2020 Day

Cameron Peak
CO-ARF 000636
23,022 Acres
as of 0008 on 08/31



- Critical Assets
- Campground
- Picnic Site
- Visitor Center
- Observation Site
- Work Center
- Event Point
 - Bridge
 - Camp
 - Closure
 - Dip Site
 - Drop Point
 - Fire Station
 - Gate
 - Hazard
 - Helibase
 - Helipod
 - Lookout
 - Mobile Weather Unit
 - Repeater
 - Resource Location
 - Safety Zone
 - Staging Area
 - Stream Crossing
 - Value at Risk
 - Verizon COW
 - Division Break
 - Branch Break
- TFR
- 600R Retardant Avoidance Waterways
- Uncontrolled Fire Edge
- Contained Line
- Completed Dozer Line
- H - H Completed Hand Line
- R - R Road as Completed Line
- Access or Improved Road
- Completed Plow Line
- Proposed Dozer Line
- Fire Break Planned or Incomplete
- Planned Fire Line
- Planned Secondary Line
- Primary Routes
- Highway or ramp
- Local connector
- Local or 4WD road
- Trail
- Forest Service
- Bureau of Land Management
- Private
- State, County, City, Areas
- State
- National Park Service (Rocky Mtn National Park)
- US Fish and Wildlife Service
- Other Federal
- State Forest
- USFS Wilderness
- Wildfire Daily Fire Perimeter



**Branch V
Structure**

Branch II

Div Z

Div F

Div L

Div R

Div U

Branch I

Div V

Div W

ESTES PARK