


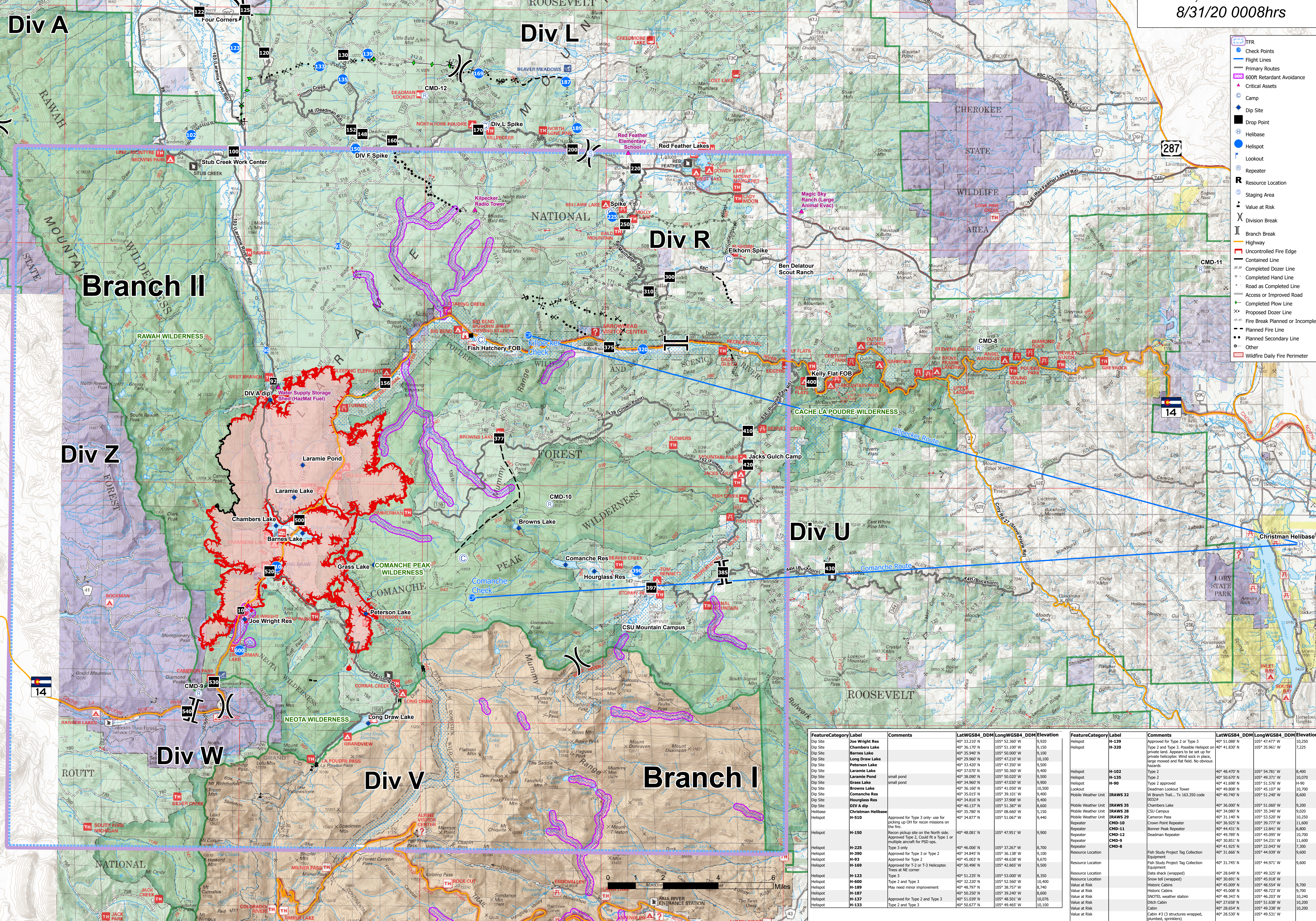
Air Operations

Cameron Peak
COARF-000636
9/2/20 Day Shift




23,022 acres at
8/31/20 0008hrs

Branch V Structure



- TFR
- Check Points
- Flight Lines
- Primary Routes
- 600ft Retardant Avoidance
- Critical Assets
- Camp
- Drop Site
- Drop Point
- Helibase
- Helipoint
- Lookout
- Repeater
- Resource Location
- Staging Area
- Value at Risk
- Branch Break
- Highway
- Uncontrolled Fire Edge
- Contained Line
- Completed Dozer Line
- Completed Hand Line
- Road as Completed Line
- Access or Improved Road
- Completed Plow Line
- Proposed Dozer Line
- Fire Break Planned or Incomplete
- Planned Fire Line
- Other Secondary Line
- Planned
- Wildfire Daily Fire Perimeter

FeatureCategory	Label	Comments	LatWGS84_DDM	LongWGS84_DDM	Elevation	FeatureCategory	Label	Comments	LatWGS84_DDM	LongWGS84_DDM	Elevation
Dip Site	Joe Wright Res		40° 33.210' N	105° 52.360' W	9,920	Helibase	H-139	Approved for Type 2 or Type 3	40° 31.868' N	105° 47.477' W	10,250
Dip Site	Chambers Lake		40° 34.867' N	105° 42.000' W	10,300	Helibase	H-320	Type 2 and Type 3. Possible Helibase on private land. Appears to be set up for private helicopters. Wind sock in place, large covered and fuel field. No obvious hazards	40° 41.830' N	105° 35.960' W	7,225
Dip Site	Barnes Lake		40° 35.940' N	105° 50.000' W	9,100	Helibase	H-162	Type 2	40° 48.470' N	105° 54.781' W	8,400
Dip Site	Long Draw Lake		40° 29.960' N	105° 42.210' W	10,100	Helibase	H-135	Type 2 approved	40° 50.670' N	105° 49.371' W	10,070
Dip Site	Peterson Lake		40° 33.420' N	105° 47.350' W	9,500	Helibase	H-90	Type 2 approved	40° 41.680' N	105° 51.570' W	11,900
Dip Site	Browns Lake		40° 32.070' N	105° 50.360' W	9,400	Mobile Weather Unit	BRAWS 32	Deadman Lookout Tower W Branch Trail, Tx 163,350 code 00324	40° 49.860' N	105° 45.107' W	10,700
Dip Site	Laramie Pond	small pond	40° 38.090' N	105° 50.000' W	9,500	Mobile Weather Unit	BRAWS 35	Chambers Lake CSU Campus	40° 36.060' N	105° 51.060' W	9,200
Dip Site	Grass Lake	small pond	40° 34.960' N	105° 47.020' W	9,900	Mobile Weather Unit	BRAWS 28	Chambers Lake Cameron Pass	40° 31.140' N	105° 53.520' W	10,250
Dip Site	Browns Lake		40° 36.160' N	105° 42.000' W	10,300	Mobile Weather Unit	CMD-10	Crown Point Repeater	40° 36.925' N	105° 39.777' W	11,600
Dip Site	Comanche Res		40° 35.015' N	105° 39.181' W	9,400	Mobile Weather Unit	CMD-11	Brown Peak Repeater	40° 44.011' N	105° 13.841' W	6,800
Dip Site	Hourglass Res		40° 34.816' N	105° 37.068' W	9,400	Mobile Weather Unit	CMD-12	Deadman Repeater	40° 49.780' N	105° 45.095' W	10,700
Dip Site	Joe Wright Res		40° 40.137' N	105° 53.360' W	8,600	Repeater	CMD-9		40° 38.851' N	105° 54.231' W	11,600
Helibase	Christian Helibase		40° 35.780' N	105° 46.360' W	9,150	Repeater	CMD-8		40° 41.925' N	105° 42.045' W	7,300
Helibase	H-510	Approved for Type 3 only-use for picking up OH for recon missions on the fire. Approved Type 2. Could fly a Type 1 or multiple aircraft for PSD ops.	40° 34.877' N	105° 51.067' W	9,440	Repeater	CMD-11		40° 49.780' N	105° 45.095' W	10,700
Helibase	H-150	Recon pickup site on the North side. Approved Type 2. Could fly a Type 1 or multiple aircraft for PSD ops.	40° 48.061' N	105° 47.951' W	9,900	Repeater	CMD-9		40° 38.851' N	105° 54.231' W	11,600
Helibase	H-225	Type 3 only	40° 46.006' N	105° 37.267' W	9,700	Repeater	CMD-8		40° 41.925' N	105° 42.045' W	7,300
Helibase	H-390	Approved for Type 3 or Type 2	40° 34.816' N	105° 42.000' W	9,100	Resource Location	CMD-11	Fish Study Project Tag Collection Equipment	40° 31.745' N	105° 44.971' W	9,600
Helibase	H-93	Approved for Type 2	40° 45.003' N	105° 46.838' W	8,670	Resource Location	CMD-11	Fish Study Project Tag Collection Equipment	40° 31.745' N	105° 44.971' W	9,600
Helibase	H-169	Approved for T-2 or T-3 Helicopters. Trees at NE corner	40° 50.496' N	105° 42.865' W	9,500	Resource Location	CMD-11	Fish Study Project Tag Collection Equipment	40° 31.745' N	105° 44.971' W	9,600
Helibase	H-123	Type 3	40° 51.235' N	105° 53.000' W	8,350	Resource Location	CMD-11	Fish Study Project Tag Collection Equipment	40° 31.745' N	105° 44.971' W	9,600
Helibase	H-600	Type 2 and Type 3	40° 32.210' N	105° 52.560' W	10,400	Resource Location	CMD-11	Fish Study Project Tag Collection Equipment	40° 31.745' N	105° 44.971' W	9,600
Helibase	H-189	Approved for Type 2 or Type 3	40° 48.797' N	105° 38.757' W	6,740	Resource Location	CMD-11	Fish Study Project Tag Collection Equipment	40° 31.745' N	105° 44.971' W	9,600
Helibase	H-117	May need minor improvement	40° 50.207' N	105° 39.240' W	8,600	Resource Location	CMD-11	Fish Study Project Tag Collection Equipment	40° 31.745' N	105° 44.971' W	9,600
Helibase	H-137	Approved for Type 2 and Type 3	40° 51.039' N	105° 48.501' W	10,076	Resource Location	CMD-11	Fish Study Project Tag Collection Equipment	40° 31.745' N	105° 44.971' W	9,600
Helibase	H-133	Type 2 and Type 3	40° 50.677' N	105° 49.465' W	10,100	Resource Location	CMD-11	Fish Study Project Tag Collection Equipment	40° 31.745' N	105° 44.971' W	9,600

SEdel
9/1/2020 2024
North American 1983 Datum
Lat/Long Grid

