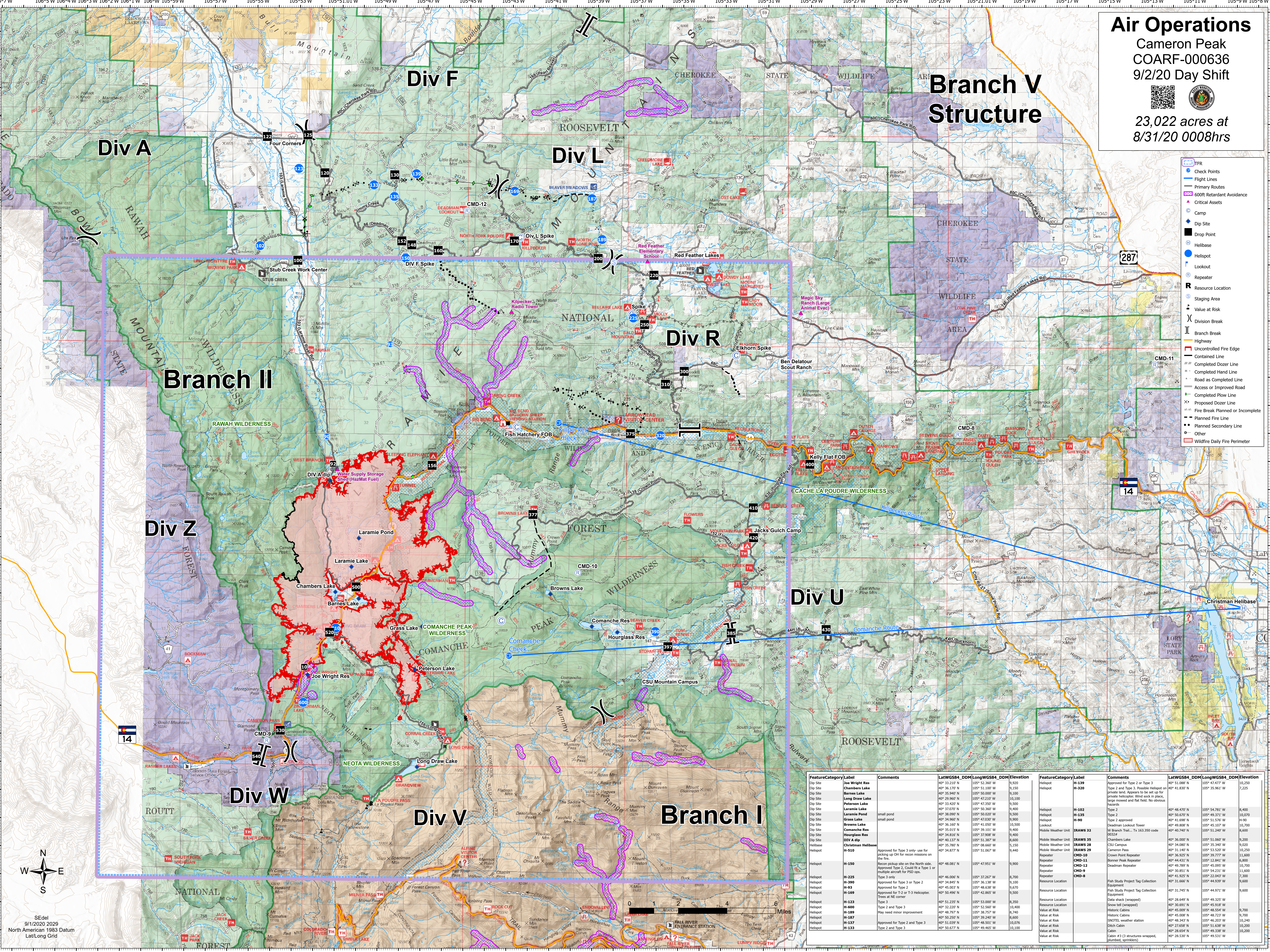


Air Operations

Cameron Peak
COARF-000636
9/2/20 Day Shift




23,022 acres at
8/31/20 0008hrs



FeatureCategory	Label	Comments	LatWGS84_DDM	LongWGS84_DDM	Elevation	FeatureCategory	Label	Comments	LatWGS84_DDM	LongWGS84_DDM	Elevation
Dip Site	Joe Wright Res		40° 33.210' N	105° 52.360' W	9,920	Helispot	H-139	Approved for Type 2 or Type 3	40° 31.888' N	105° 47.477' W	10,250
Dip Site	Chambers Lake		40° 34.807' N	105° 41.207' W	10,500	Helispot	H-320	Type 2 and Type 3. Possible Helispot on private land. Appears to be set up for private helispots. Wind sock in place, large ground and flat field. No obstructions	40° 41.830' N	105° 35.960' W	7,225
Dip Site	Barnes Lake		40° 35.940' N	105° 50.000' W	9,100	Helispot	H-162	Type 2	40° 48.470' N	105° 54.781' W	8,400
Dip Site	Long Draw Lake		40° 29.600' N	105° 47.210' W	10,100	Helispot	H-135	Type 2 approved	40° 50.670' N	105° 49.371' W	10,070
Dip Site	Peterson Lake		40° 29.600' N	105° 47.210' W	10,100	Helispot	H-90	Type 2 approved	40° 41.688' N	105° 51.576' W	11,900
Dip Site	Laramie Pond	small pond	40° 33.420' N	105° 47.350' W	9,500	Lookout	H-119	Deadman Lookout Tower	40° 49.888' N	105° 45.107' W	10,700
Dip Site	Browns Lake	small pond	40° 33.070' N	105° 50.300' W	9,400	Mobile Weather Unit	DRAWS 32	W Branch Trail, Tx 163,350 code 00324	40° 40.740' N	105° 44.930' W	9,400
Dip Site	Comanche Res	small pond	40° 38.090' N	105° 50.000' W	9,500	Mobile Weather Unit	DRAWS 35	Chambers Lake	40° 36.080' N	105° 51.040' W	9,200
Dip Site	Hourglass Res	small pond	40° 34.816' N	105° 37.008' W	9,400	Mobile Weather Unit	DRAWS 28	CSU Campus	40° 34.080' N	105° 35.300' W	9,000
Dip Site	Joe Wright Res		40° 33.210' N	105° 52.360' W	9,920	Mobile Weather Unit	DRAWS 29	Cameron Pass	40° 31.140' N	105° 53.520' W	10,250
Helibase	Christian Helibase	Approved for Type 3 only-use for picking up OH for recon missions on the fire.	40° 34.700' N	105° 48.300' W	9,150	Repeater	CMD-10	Crown Point Repeater	40° 36.925' N	105° 39.777' W	11,600
Helispot	H-150	Recon pickup site on the North side. Approved Type 2, could be a Type L or multiple aircraft for PSD ops.	40° 48.081' N	105° 47.951' W	9,900	Repeater	CMD-11	Beaver Peak Repeater	40° 44.011' N	105° 13.854' W	6,800
Helispot	H-225	Type 3 only	40° 46.006' N	105° 37.267' W	9,670	Repeater	CMD-12	Deadman Repeater	40° 49.789' N	105° 45.095' W	10,700
Helispot	H-93	Approved for Type 3 or Type 2	40° 45.003' N	105° 48.838' W	8,700	Repeater	CMD-8		40° 30.851' N	105° 54.231' W	11,600
Helispot	H-169	Approved for T-2 or T-3 Helicopter. Trees at NE corner	40° 50.496' N	105° 42.865' W	9,500	Resource Location	CMD-9		40° 41.925' N	105° 22.043' W	7,300
Helispot	H-123	Type 3	40° 51.235' N	105° 53.000' W	8,350	Resource Location	CMD-8		40° 31.745' N	105° 44.931' W	5,600
Helispot	H-600	Type 2 and Type 3	40° 32.210' N	105° 52.560' W	10,400	Resource Location					
Helispot	H-189	May need minor improvement	40° 48.797' N	105° 38.727' W	6,740	Resource Location					
Helispot	H-117		40° 40.207' N	105° 39.240' W	6,600	Value at Risk					
Helispot	H-137	Approved for Type 2 and Type 3	40° 51.039' N	105° 48.501' W	10,076	Value at Risk					
Helispot	H-133	Type 2 and Type 3	40° 50.677' N	105° 49.465' W	10,100	Value at Risk					

SEdel
9/1/2020 2029
North American 1983 Datum
Lat/Long Grid