

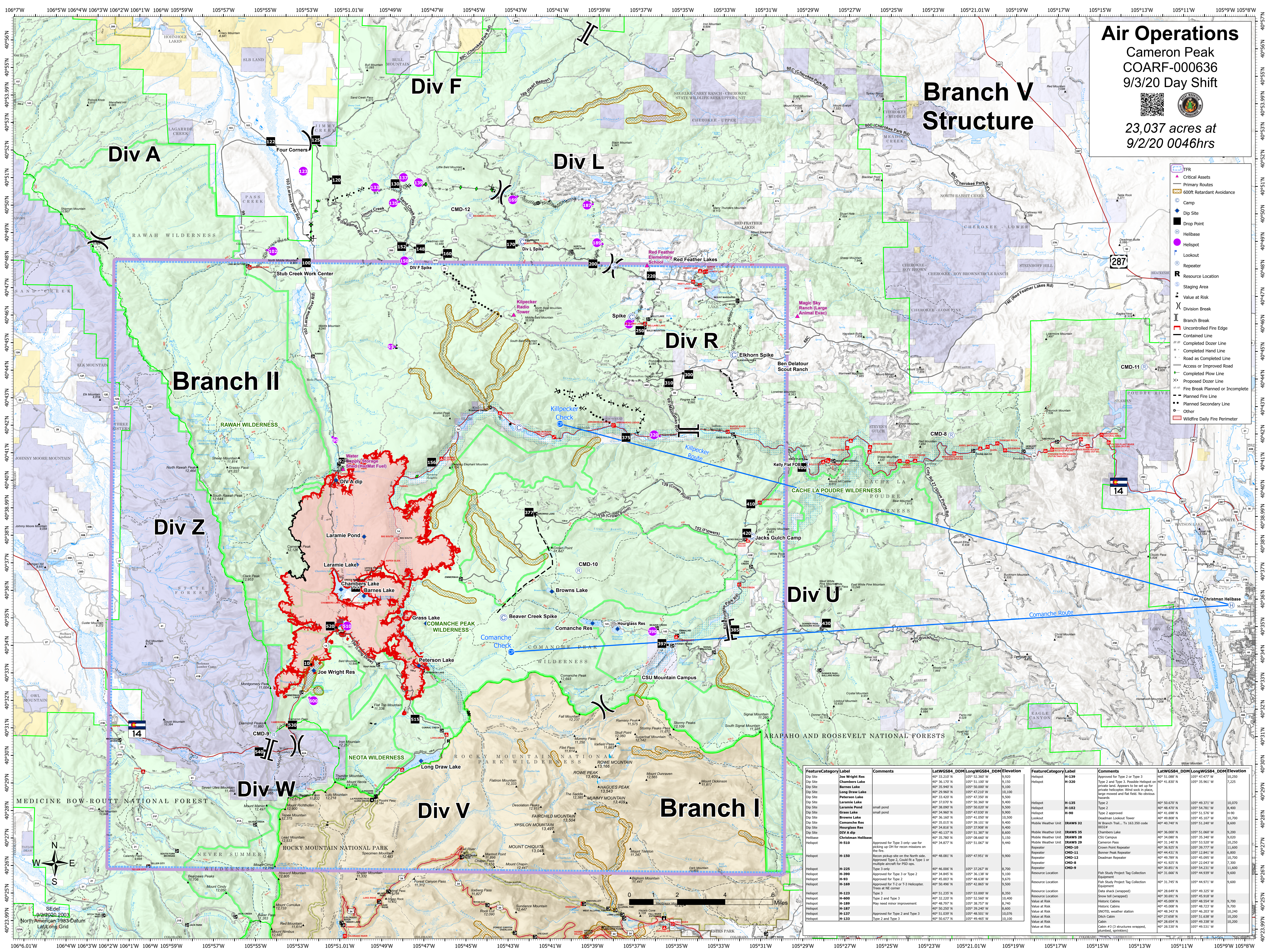
Air Operations

Cameron Peak
COARF-000636
9/3/20 Day Shift



23,037 acres at
9/2/20 0046hrs

Branch V Structure



- TFR
- Critical Assets
- Primary Routes
- 600ft Retardant Avoidance
- Camp
- Dip Site
- Drop Point
- Helibase
- Helipoint
- Lookout
- Repeater
- Resource Location
- Staging Area
- Value at Risk
- Division Break
- Branch Break
- Uncontrolled Fire Edge
- Contained Line
- Completed Dozer Line
- Completed Hand Line
- Road as Completed Line
- Access or Improved Road
- Completed Flow Line
- Proposed Dozer Line
- Fire Break Planned or Incomplete
- Planned Fire Line
- Other
- Wildfire Daily Fire Perimeter

FeatureCategory	Label	Comments	LatWGS84_DDM	LongWGS84_DDM	Elevation	FeatureCategory	Label	Comments	LatWGS84_DDM	LongWGS84_DDM	Elevation
Dip Site	Joe Wright Res		40° 33.210' N	105° 52.360' W	9,920	Helipoint	H-139	Approved for Type 2 or Type 3	40° 51.088' N	105° 47.477' W	10,250
Dip Site	Chambers Lake		40° 36.197' N	105° 51.107' W	9,150	Helipoint	H-320	Type 2 and Type 3: Possible Helipoint on private land. Appears to be set up for private helicopter. Wind sock in place, large tower and fuel tank. No obvious hazards	40° 41.830' N	105° 35.967' W	7,225
Dip Site	Barnes Lake		40° 35.940' N	105° 50.000' W	9,100	Helipoint	H-135	Type 2	40° 50.670' N	105° 49.311' W	10,070
Dip Site	Long Draw Lake		40° 29.960' N	105° 47.210' W	10,100	Helipoint	H-102	Type 2	40° 48.470' N	105° 54.781' W	9,400
Dip Site	Peterson Lake		40° 33.420' N	105° 47.350' W	9,500	Helipoint	H-90	Type 2 approved	40° 41.698' N	105° 51.576' W	11,900
Dip Site	Laramie Pond	small pond	40° 37.070' N	105° 50.300' W	9,400	Lookout	H-109	Deadman Lookout Tower	40° 49.808' N	105° 45.107' W	10,700
Dip Site	Grass Lake	small pond	40° 34.960' N	105° 47.900' W	9,900	Mobile Weather Unit	DRAWS 32	W Branch Tx, Tx 06330 code 00324	40° 42.960' N	105° 51.246' W	9,600
Dip Site	Browns Lake		40° 36.160' N	105° 48.000' W	10,500	Mobile Weather Unit	DRAWS 35	Chambers Lake	40° 36.060' N	105° 51.060' W	9,200
Dip Site	Comanche Res		40° 35.015' N	105° 39.161' W	9,400	Mobile Weather Unit	DRAWS 28	CSU Campus	40° 34.080' N	105° 35.300' W	9,000
Dip Site	Hourglass Res		40° 38.816' N	105° 37.908' W	9,400	Mobile Weather Unit	DRAWS 29	Cameron Pass	40° 31.140' N	105° 53.520' W	10,250
Helibase	DIV A Dip		40° 40.137' N	105° 53.367' W	8,600	Repeater	CMD-10	Crown Point Repeater	40° 36.925' N	105° 39.777' W	11,600
Helibase	Christman Helibase		40° 35.280' N	105° 48.680' W	9,150	Repeater	CMD-11	Brown Peak Repeater	40° 44.611' N	105° 32.861' W	8,800
Helipoint	H-510	Approved for Type 3 only-use for picking up OH for recon missions on the fire.	40° 34.877' N	105° 51.067' W	9,440	Repeater	CMD-12	Cameron Pass	40° 49.789' N	105° 45.095' W	10,700
Helipoint	H-150	Recon pickup site on the North side. Approved Type 2. Could be a Type 1 or multiple aircraft for PSD ops.	40° 48.081' N	105° 47.951' W	9,900	Repeater	CMD-18	Deadman Repeater	40° 41.925' N	105° 22.043' W	7,300
Helipoint	H-225	Type 3 only.	40° 46.006' N	105° 37.267' W	9,920	Repeater	CMD-9		40° 30.883' N	105° 54.231' W	11,600
Helipoint	H-360	Approved for Type 3 or Type 2	40° 34.987' N	105° 41.200' W	9,100	Resource Location		Fish Study Project Tag Collection Equipment	40° 31.666' N	105° 44.200' W	9,600
Helipoint	H-93	Approved for Type 2	40° 45.003' N	105° 48.638' W	9,670	Resource Location		Fish Study Project Tag Collection Equipment	40° 31.745' N	105° 44.971' W	9,600
Helipoint	H-169	Approved for Type 2 or T-3 Helicopter. Trees at NE corner	40° 50.496' N	105° 42.865' W	9,500	Resource Location			40° 31.440' N	105° 53.520' W	10,250
Helipoint	H-123	Type 3	40° 51.235' N	105° 53.000' W	8,350	Resource Location			40° 49.325' W	105° 49.325' W	10,250
Helipoint	H-600	Type 2 and Type 3	40° 32.210' N	105° 52.560' W	10,400	Resource Location			40° 30.681' N	105° 45.918' W	8,800
Helipoint	H-189	Approved for Type 2	40° 48.297' N	105° 38.787' W	8,740	Resource Location			40° 45.098' N	105° 46.594' W	9,700
Helipoint	H-187	May need minor improvement	40° 48.207' N	105° 38.280' W	8,600	Resource Location			40° 45.008' N	105° 48.723' W	9,700
Helipoint	H-137	Approved for Type 2 and Type 3	40° 51.039' N	105° 48.501' W	10,076	Value at Risk			40° 48.343' N	105° 46.203' W	10,240
Helipoint	H-133	Type 2 and Type 3	40° 50.677' N	105° 49.465' W	10,100	Value at Risk			40° 27.658' N	105° 51.638' W	10,200
						Value at Risk			40° 28.654' N	105° 49.338' W	10,240
						Value at Risk			40° 28.530' N	105° 49.531' W	10,200

Set of
North American 1983 Datum
Lat/Long Grid

