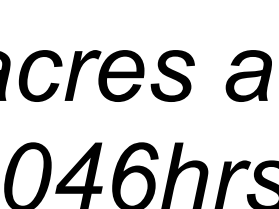
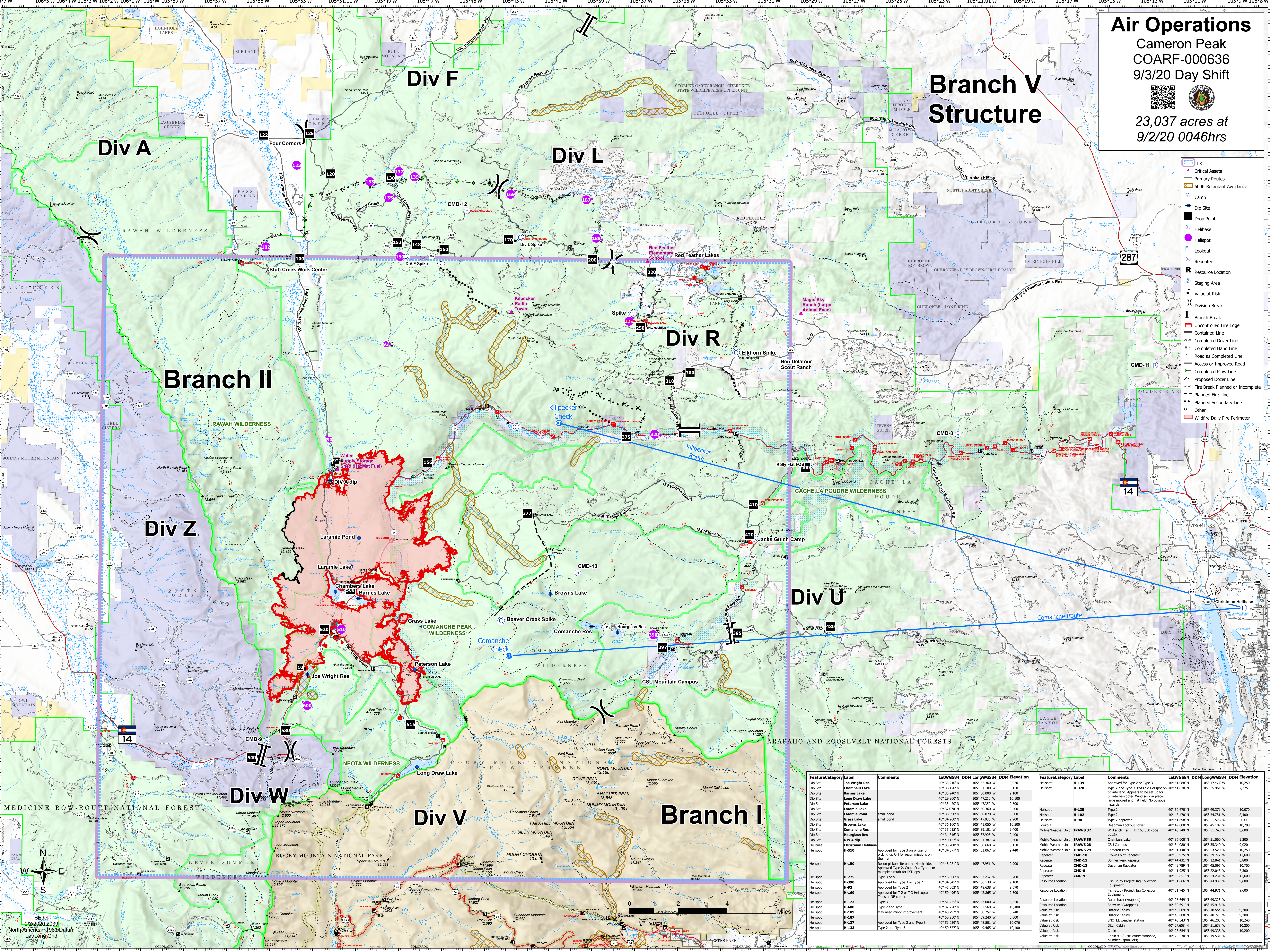


Air Operations
 Cameron Peak
 COARF-000636
 9/3/20 Day Shift
 23,037 acres at
 9/2/20 0046hrs



Branch V Structure



- TFR
- Critical Assets
- Primary Routes
- 600ft Retardant Avoidance
- Camp
- Dip Site
- Drop Point
- Helibase
- Lookout
- Repeater
- Resource Location
- Staging Area
- Value at Risk
- Division Break
- Branch Break
- Uncontrolled Fire Edge
- Contained Line
- Completed Dozer Line
- Completed Hand Line
- Road as Completed Line
- Access or Improved Road
- Completed Flow Line
- Proposed Dozer Line
- Fire Break Planned or Incomplete
- Planned Fire Line
- Planned Secondary Line
- Other
- Wildfire Daily Fire Perimeter

FeatureCategory	Label	Comments	LatWGS84_DDM	LongWGS84_DDM	Elevation	FeatureCategory	Label	Comments	LatWGS84_DDM	LongWGS84_DDM	Elevation
Dip Site	Joe Wright Res		40° 33.210' N	105° 52.360' W	9,920	Helicopter	H-139	Approved for Type 2 or Type 3	40° 51.088' N	105° 47.477' W	10,250
Dip Site	Chambers Lake		40° 36.197' N	105° 51.100' W	9,150	Helicopter	H-320	Type 2 and Type 3; Possible Helibase on private land. Appears to be set up for private use. Wind sock in place, base covered and field flat. No obvious hazards	40° 41.832' N	105° 55.967' W	7,225
Dip Site	Barnes Lake		40° 35.940' N	105° 50.000' W	9,100	Helicopter	H-135	Type 2	40° 50.670' N	105° 49.371' W	10,070
Dip Site	Long Draw Lake		40° 29.960' N	105° 47.210' W	10,100	Helicopter	H-102	Type 2	40° 48.470' N	105° 54.781' W	9,400
Dip Site	Peterson Lake		40° 33.420' N	105° 47.350' W	9,500	Helicopter	H-90	Type 2 approved	40° 41.688' N	105° 51.570' W	11,900
Dip Site	Laramie Pond	small pond	40° 37.070' N	105° 50.300' W	9,400	Mobile Weather Unit	BRAWS 32	Deadman Lookout Tower	40° 49.802' N	105° 45.107' W	10,700
Dip Site	Grass Lake	small pond	40° 34.960' N	105° 47.020' W	9,900	Mobile Weather Unit	BRAWS 35	W Branch Trail, Tx 163,350 code 00324	40° 49.789' N	105° 51.240' W	9,600
Dip Site	Browns Lake		40° 36.167' N	105° 49.050' W	10,500	Mobile Weather Unit	BRAWS 28	Chambers Lake	40° 36.067' N	105° 51.067' W	9,200
Dip Site	Comanche Res		40° 35.015' N	105° 39.181' W	9,400	Mobile Weather Unit	BRAWS 29	CSU Campus	40° 34.087' N	105° 35.307' W	9,000
Dip Site	Hourglass Res		40° 34.816' N	105° 37.068' W	9,400	Mobile Weather Unit	BRAWS 29	Cameron Pass	40° 31.140' N	105° 53.520' W	10,250
Dip Site	DIV A Dip		40° 40.137' N	105° 53.367' W	8,600	Repeater	CMD-10	Crown Point Repeater	40° 36.925' N	105° 39.777' W	11,600
Helibase	Christian Helibase	Approved for Type 3 only-use for picking up OH for recon missions on the fire.	40° 35.287' N	105° 48.847' W	9,150	Repeater	CMD-11	Browner Peak Repeater	40° 44.411' N	105° 12.841' W	8,800
Helicopter	H-510	Approved for Type 3 only-use for picking up OH for recon missions on the fire.	40° 34.877' N	105° 51.067' W	9,440	Repeater	CMD-12	Deadman Repeater	40° 49.789' N	105° 45.095' W	10,700
Helicopter	H-150	Recon pickup site on the North side. Approved Type 2. Could fit a Type 1 or multiple aircraft for PSD ops.	40° 48.081' N	105° 47.951' W	9,900	Repeater	CMD-18		40° 41.925' N	105° 22.043' W	7,300
Helicopter	H-225	Type 3 only	40° 46.066' N	105° 37.267' W	9,700	Repeater	CMD-9		40° 30.853' N	105° 54.231' W	11,600
Helicopter	H-90	Approved for Type 3 or Type 2	40° 34.967' N	105° 48.328' W	9,100	Resource Location			40° 31.668' N	105° 44.820' W	9,600
Helicopter	H-93	Approved for Type 2	40° 45.003' N	105° 48.838' W	8,670	Resource Location			40° 31.745' N	105° 44.971' W	9,600
Helicopter	H-169	Approved for T-2 or T-3 Helicopter. Tress at NE corner	40° 50.496' N	105° 42.865' W	9,500	Resource Location			40° 28.647' N	105° 49.325' W	9,400
Helicopter	H-123	Type 3	40° 51.235' N	105° 53.000' W	8,350	Resource Location			40° 30.691' N	105° 45.918' W	9,300
Helicopter	H-600	Type 2 and Type 3	40° 32.207' N	105° 52.560' W	10,400	Resource Location			40° 45.097' N	105° 48.723' W	9,700
Helicopter	H-189	Approved for Type 2 and Type 3	40° 48.297' N	105° 38.787' W	8,740	Value at Risk			40° 48.343' N	105° 46.203' W	10,240
Helicopter	H-187	May need minor improvement	40° 50.207' N	105° 48.287' W	8,600	Value at Risk			40° 37.658' N	105° 51.638' W	10,300
Helicopter	H-137	Approved for Type 2 and Type 3	40° 51.039' N	105° 48.511' W	10,070	Value at Risk			40° 28.654' N	105° 49.338' W	10,240
Helicopter	H-133	Type 2 and Type 3	40° 50.677' N	105° 49.465' W	10,100	Value at Risk			40° 28.537' N	105° 49.531' W	10,200

Scale
 0 1 2 4 6 Miles

