

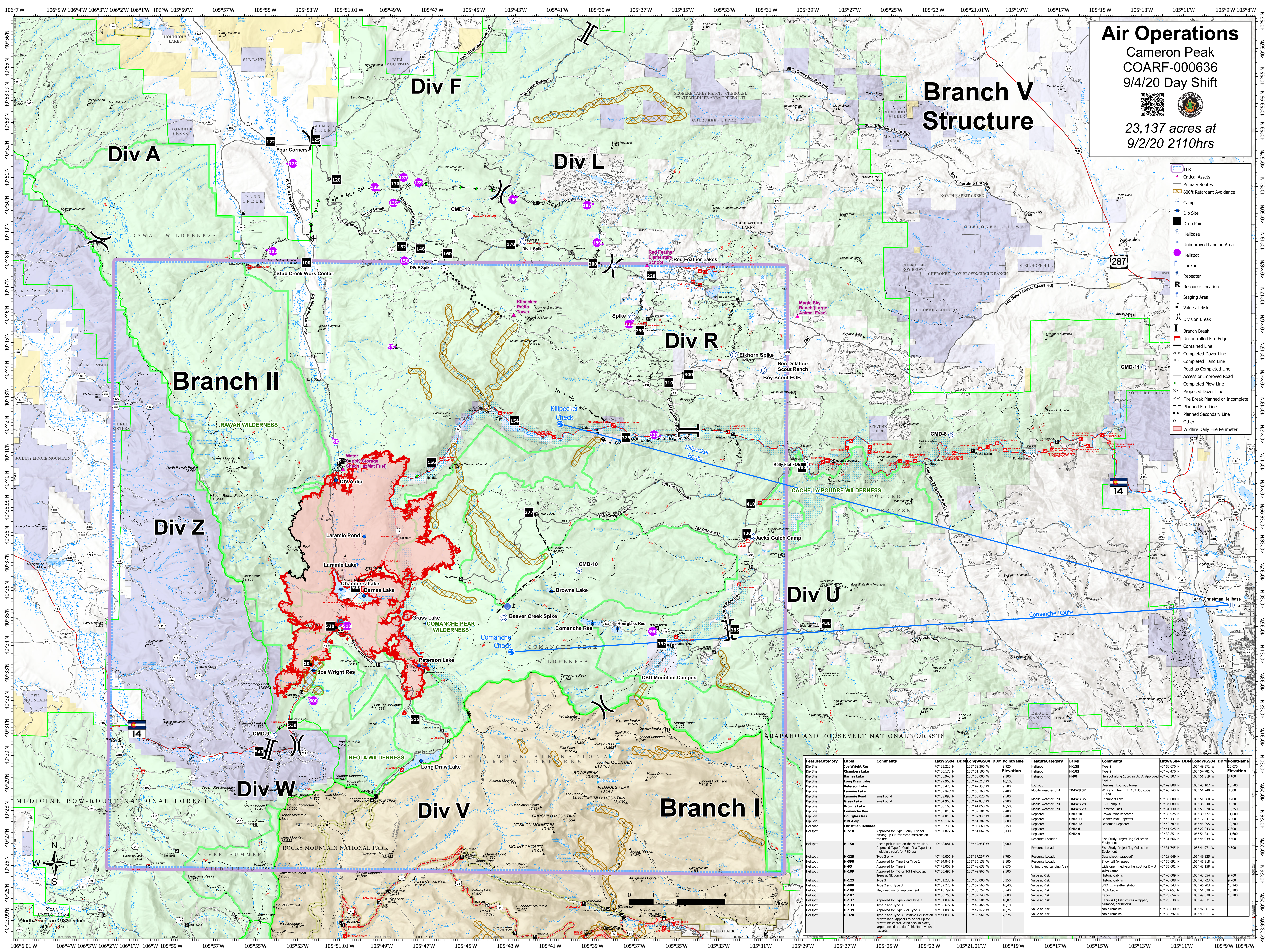
Air Operations

Cameron Peak
COARF-000636
9/4/20 Day Shift




23,137 acres at
9/2/20 2110hrs

Branch V Structure



- TFR
- Critical Assets
- Primary Routes
- 600ft Retardant Avoidance
- Camp
- Dip Site
- Drop Point
- Helibase
- Unimproved Landing Area
- Lookout
- Repeater
- Resource Location
- Value at Risk
- Division Break
- Branch Break
- Uncontrolled Fire Edge
- Contained Line
- Completed Dozer Line
- Completed Hand Line
- Road as Completed Line
- Access or Improved Road
- Completed Flow Line
- Proposed Dozer Line
- Fire Break Planned or Incomplete
- Planned Fire Line
- Planned Secondary Line
- Other
- Wildfire Daily Fire Perimeter

FeatureCategory	Label	Comments	LatWGS84_DDM	LongWGS84_DDM	PointName	Elevation	FeatureCategory	Label	Comments	LatWGS84_DDM	LongWGS84_DDM	PointName	Elevation
Dip Site	Joe Wright Res		40° 33.212' N	105° 51.100' W		9,100	Helicopter	H-102	Type 2	40° 48.470' N	105° 54.781' W		8,400
Dip Site	Chambers Lake		40° 36.170' N	105° 51.100' W		9,100	Helicopter	H-90	Helicopter along 103rd in Div A. Approved	40° 43.307' N	105° 51.819' W		8,400
Dip Site	Barnes Lake		40° 35.940' N	105° 50.000' W		9,100	Helicopter	H-101	Helicopter along 103rd in Div A. Approved	40° 40.740' N	105° 51.240' W		8,600
Dip Site	Long Draw Lake		40° 29.960' N	105° 42.010' W		10,100	Lookout		Deadman Lookout Tower	40° 49.808' N	105° 45.107' W		10,700
Dip Site	Peterson Lake		40° 33.400' N	105° 47.350' W		9,500	Mobile Weather Unit	IRAWS 32	Chambers Lake	40° 49.808' N	105° 45.107' W		10,700
Dip Site	Laramie Pond	small pond	40° 37.070' N	105° 50.360' W		9,900	Mobile Weather Unit	IRAWS 35	CSU Campus	40° 36.000' N	105° 51.060' W		9,200
Dip Site	Grass Lake	small pond	40° 34.960' N	105° 47.930' W		9,900	Mobile Weather Unit	IRAWS 28	CSU Campus	40° 34.960' N	105° 47.930' W		9,200
Dip Site	Browns Lake		40° 36.160' N	105° 41.050' W		10,500	Mobile Weather Unit	IRAWS 29	Cameron Peak	40° 36.160' N	105° 41.050' W		10,200
Dip Site	Comanche Res		40° 35.015' N	105° 39.310' W		9,400	Repeater	CMD-10	Crown Point Repeater	40° 36.925' N	105° 39.777' W		11,600
Dip Site	Comanche Res		40° 34.810' N	105° 37.980' W		9,400	Repeater	CMD-11	Bonner Peak Repeater	40° 44.431' N	105° 12.841' W		6,800
Dip Site	Hourglass Res		40° 40.137' N	105° 51.387' W		8,600	Repeater	CMD-12	Bonner Peak Repeater	40° 49.789' N	105° 45.997' W		10,700
Helibase	Christman Helibase		40° 35.787' N	105° 08.660' W		5,150	Repeater	CMD-8	Bonner Peak Repeater	40° 41.925' N	105° 22.043' W		7,300
Helibase	H-510	Approved for Type 3 only- use for picking up OH for recon missions on the fire. Recon pickup site on the North side. Approved Type 2. Could fit a Type 1 or multiple aircraft for PSD ops.	40° 34.877' N	105° 51.067' W		9,400	Repeater	CMD-9	Bonner Peak Repeater	40° 30.851' N	105° 54.231' W		11,600
Helibase	H-150	Recon pickup site on the North side. Approved Type 2. Could fit a Type 1 or multiple aircraft for PSD ops.	40° 48.081' N	105° 47.951' W		9,900	Resource Location		Fish Study Project Tag Collection Equipment	40° 31.466' N	105° 44.939' W		9,600
Helibase	H-235	Type 3 only	40° 46.006' N	105° 37.267' W		8,700	Resource Location		Data shack (wrapped)	40° 28.649' N	105° 49.325' W		10,070
Helibase	H-290	Approved for Type 3 or Type 2	40° 34.945' N	105° 36.138' W		9,100	Resource Location		Snow fall (wrapped)	40° 30.691' N	105° 45.918' W		9,700
Helibase	H-93	Approved for Type 2	40° 45.007' N	105° 48.038' W		9,670	Resource Location		Unimproved Landing Area	40° 35.011' N	105° 43.138' W		10,200
Helibase	H-169	Approved for T-2 or T-3 Helicopter. Trees at NE corner	40° 50.996' N	105° 42.865' W		9,500	Value at Risk		Historic Cabins	40° 45.009' N	105° 48.272' W		9,700
Helibase	H-123	Type 2 and Type 3	40° 51.235' N	105° 53.000' W		8,350	Value at Risk		SNITEL weather station	40° 48.343' N	105° 46.203' W		10,240
Helibase	H-600	Type 2 and Type 3	40° 32.220' N	105° 52.560' W		10,400	Value at Risk		Ditch Cabin	40° 27.658' N	105° 51.638' W		10,200
Helibase	H-187	May need minor improvement	40° 48.797' N	105° 38.757' W		8,740	Value at Risk		Cabin remains	40° 28.654' N	105° 49.338' W		10,200
Helibase	H-137	Approved for Type 2 and Type 3	40° 51.039' N	105° 48.501' W		10,070	Value at Risk		Cabin #3 (3 structures wrapped, aluminum, sprinklers)	40° 28.530' N	105° 49.531' W		10,200
Helibase	H-133	Type 2 and Type 3	40° 50.677' N	105° 49.465' W		10,100	Value at Risk		Cabin remains	40° 35.637' N	105° 42.861' W		9,600
Helibase	H-339	Approved for Type 2 or Type 3	40° 43.008' N	105° 47.977' W		10,250	Value at Risk		Cabin remains	40° 36.792' N	105° 40.911' W		9,600
Helibase	H-230	Type 2 and Type 3. Possible Helicopter private land. Appears to be set up for private helicopter. Wind sock in place, large moved and flat field. No obvious hazards	40° 41.800' N	105° 36.961' W		7,295	Value at Risk						

SEdel
9/4/2020 2024
North American 1983 Datum
Lat/Long Grid