

BRANCH I
Cameron Peak
CO-ARF-636
4-Sep-2020

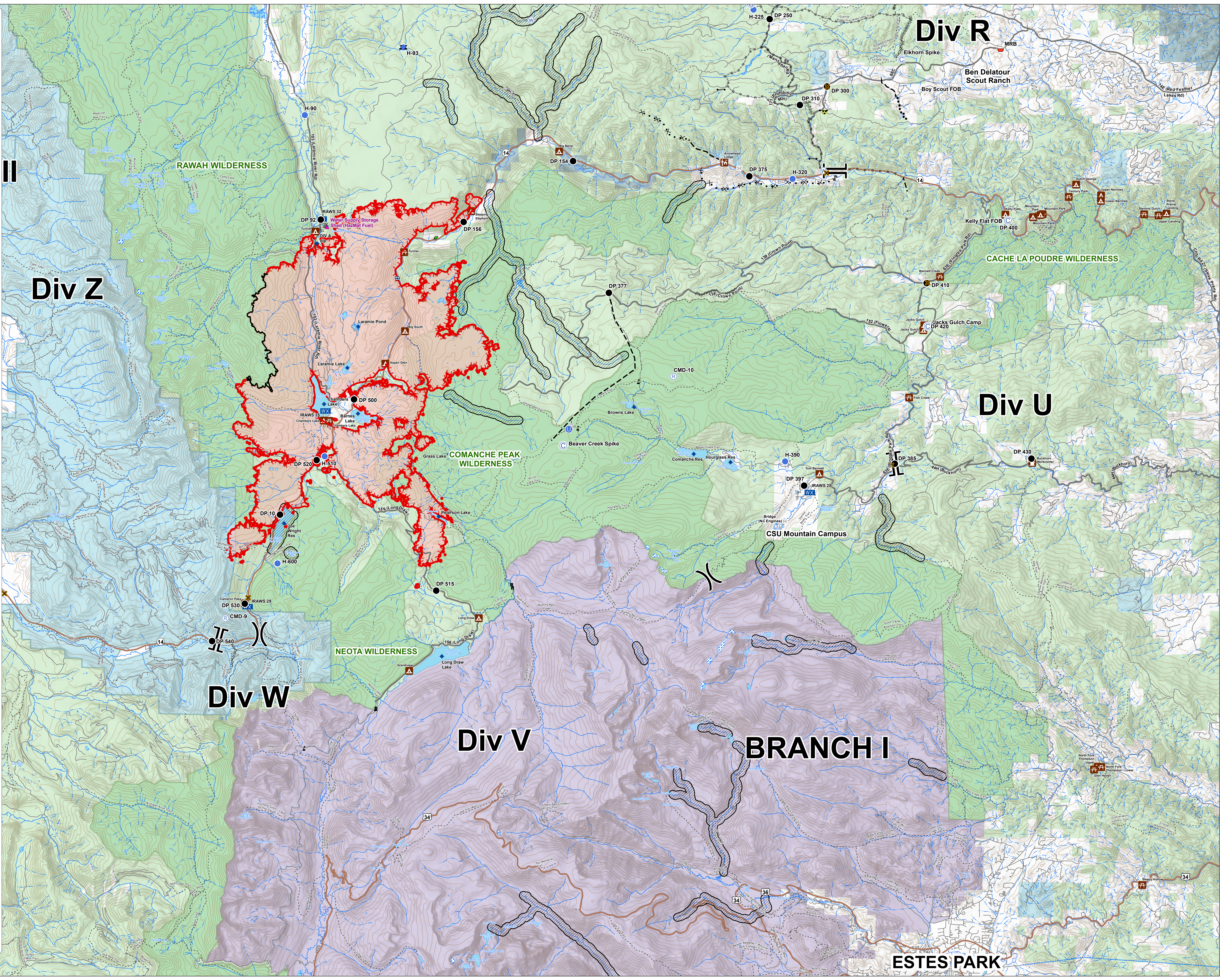
Appx 23,903 ac
at 4-Sep 00:02



0 1
Miles

- Bridge
- Camp
- Closure
- Dip Site
- Drop Point
- Gate
- Hazard
- Unimproved Landing Area
- Helispot
- Mobile Weather Unit
- Repeater
- Fish Study Equipment
- Retardant/Mud Pit
- Sling Site
- Water Source
- Water Development or Draft Site
- Value at Risk
- Division Break
- Branch Break

- Uncontrolled Fire Edge
- Contained Line
- Completed Duzer Line
- H - H - Completed Hand Line
- R - R - Road as Completed Line
- Access or Improved Road
- Completed Plow Line
- Proposed Duzer Line
- Planned Fire Line
- Planned Secondary Line
- Fire Area
- Critical Assets
- Campground
- Picnic Site
- Visitor Center
- Work Center
- Primary Routes
- Highway or ramp
- Local connector
- Local or 4WD road
- Trail
- 600R Retardant Avoidance Waters
- Forest Service
- Bureau of Land Management
- Private
- State, County, City, Arees
- State
- NPS - Rocky Mtn National Park
- Other Federal
- State Forest
- USFS Wilderness



ESTES PARK