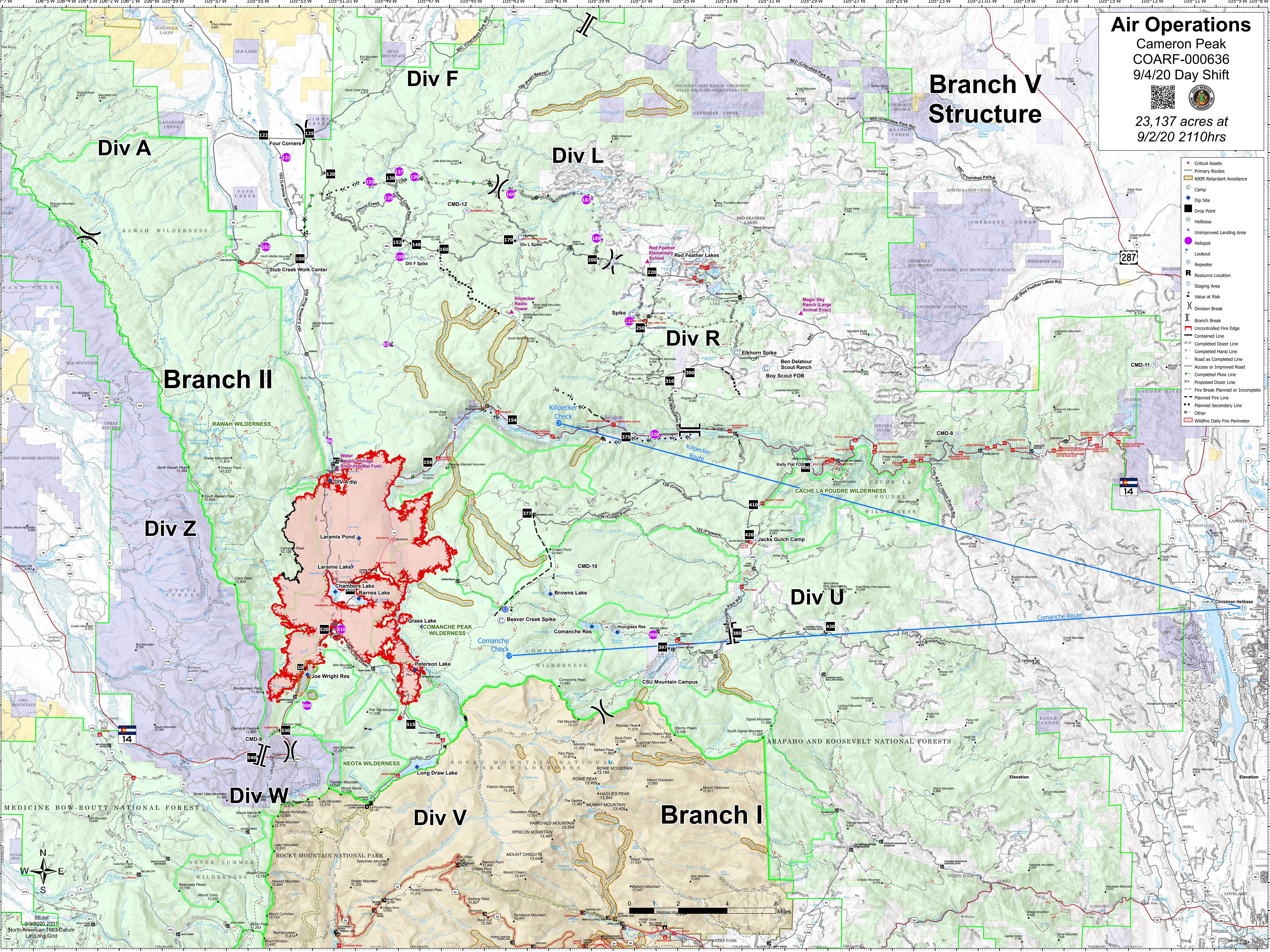


Air Operations
 Cameron Peak
 COARF-000636
 9/4/20 Day Shift
 23,137 acres at
 9/2/20 2110hrs

Branch V Structure



- ▲ Critical Assets
- Primary Routes
- ▭ 600ft Retardant Avoidance
- Camp
- ◆ Dip Site
- Drop Point
- Helibase
- Unimproved Landing Area
- Lookout
- Repeater
- Resource Location
- Staging Area
- Value at Risk
- ⌋ Division Break
- ⌋ Branch Break
- ▬ Uncontrolled Fire Edge
- ▬ Contained Line
- ▬ Completed Dozer Line
- ▬ Completed Hand Line
- ▬ Access or Improved Road
- ▬ Completed Flow Line
- ▬ Proposed Dozer Line
- ▬ Fire Break Planned or Incomplete
- ▬ Planned Fire Line
- Other
- ▭ Wildfire Daily Fire Perimeter

Scale: 0 1 2 4 6 Miles
 SEdel
 9/3/2020 2037
 North American 1983 Datum
 Lat/Long Grid