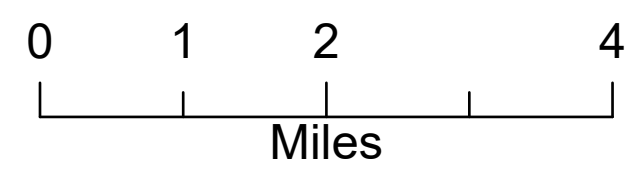
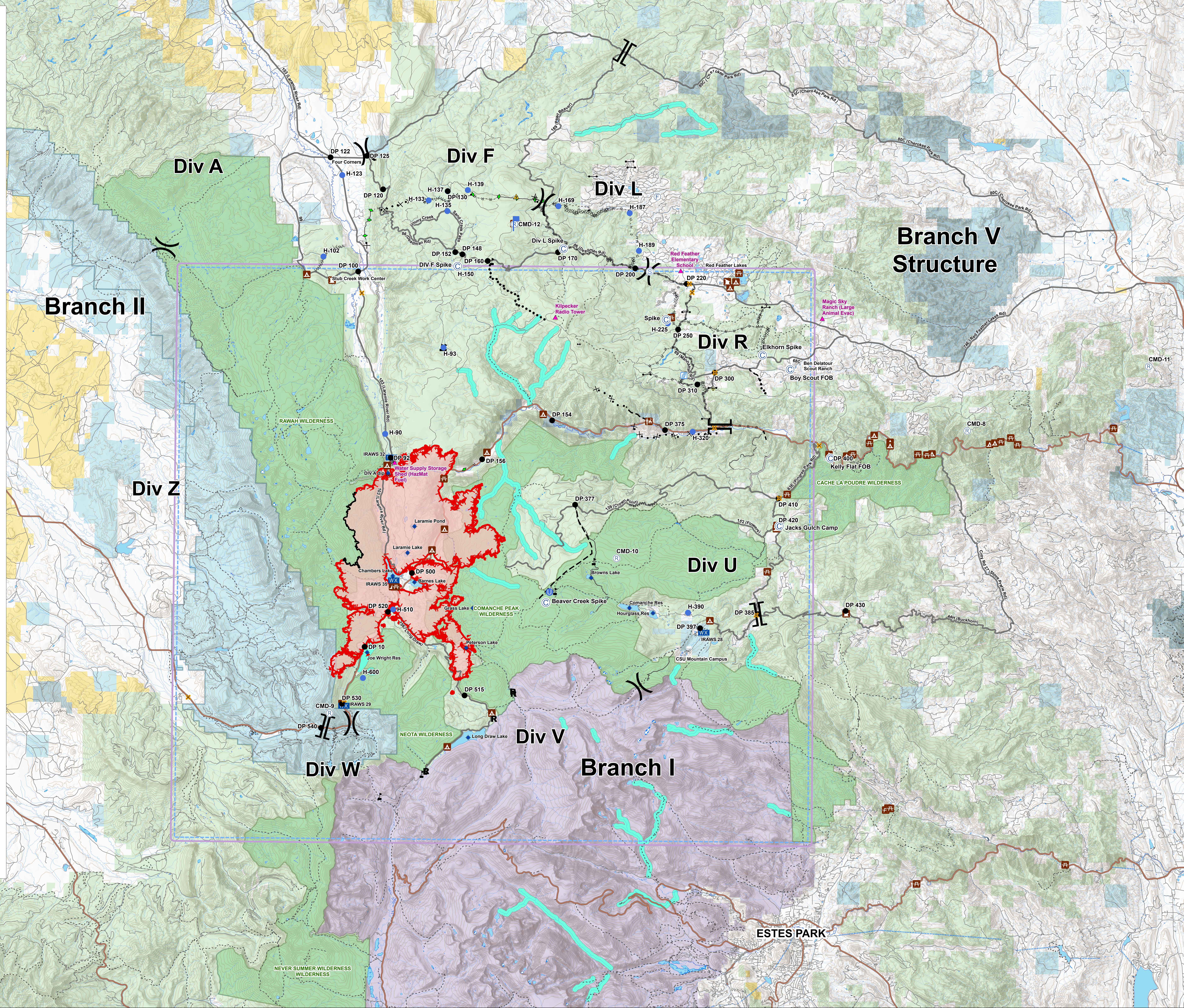


Operations
09/04/2020 Day

Cameron Peak
CO-ARF 000636
23,137 Acres
as of 2110 on 9/2



- Critical Assets
- Campground
- Picnic Site
- Visitor Center
- Observation Site
- Work Center
- Bridge
- Camp
- Closure
- Dip Site
- Drop Point
- Fire Station
- Gate
- Hazard
- Unimproved Landing Area
- Helispot
- Lookout
- Mobile Weather Unit
- Repeater
- Resource Location
- Safety Zone
- Sling Site
- Staging Area
- Stream Crossing
- Value at Risk
- Vertizon CDW
- Division Break
- Branch Break
- TFR
- 600ft Retardant Avoidance Waterways
- Uncontrolled Fire Edge
- Contained Line
- Completed Dozer Line
- H - H Completed Hand Line
- R - R Road as Completed Line
- Access or Improved Road
- Completed Flow Line
- Proposed Dozer Line
- Fire Break Planned or Incomplete
- Planned Fire Line
- Planned Secondary Line
- Primary Routes
- Highway or ramp
- Local connector
- Local or 4WD road
- Trail
- Forest Service
- Bureau of Land Management
- Private
- State, County, City, Areas
- State
- National Park Service (Rocky Mtn National Park)
- US Fish and Wildlife Service
- Other Federal
- State Forest
- USFS Wilderness
- Wildfire Daily Fire Perimeter



**Branch V
Structure**

Branch II

Div Z

Div F

Div L

Div R

Div U

Div V

Div W

Branch I

ESTES PARK