

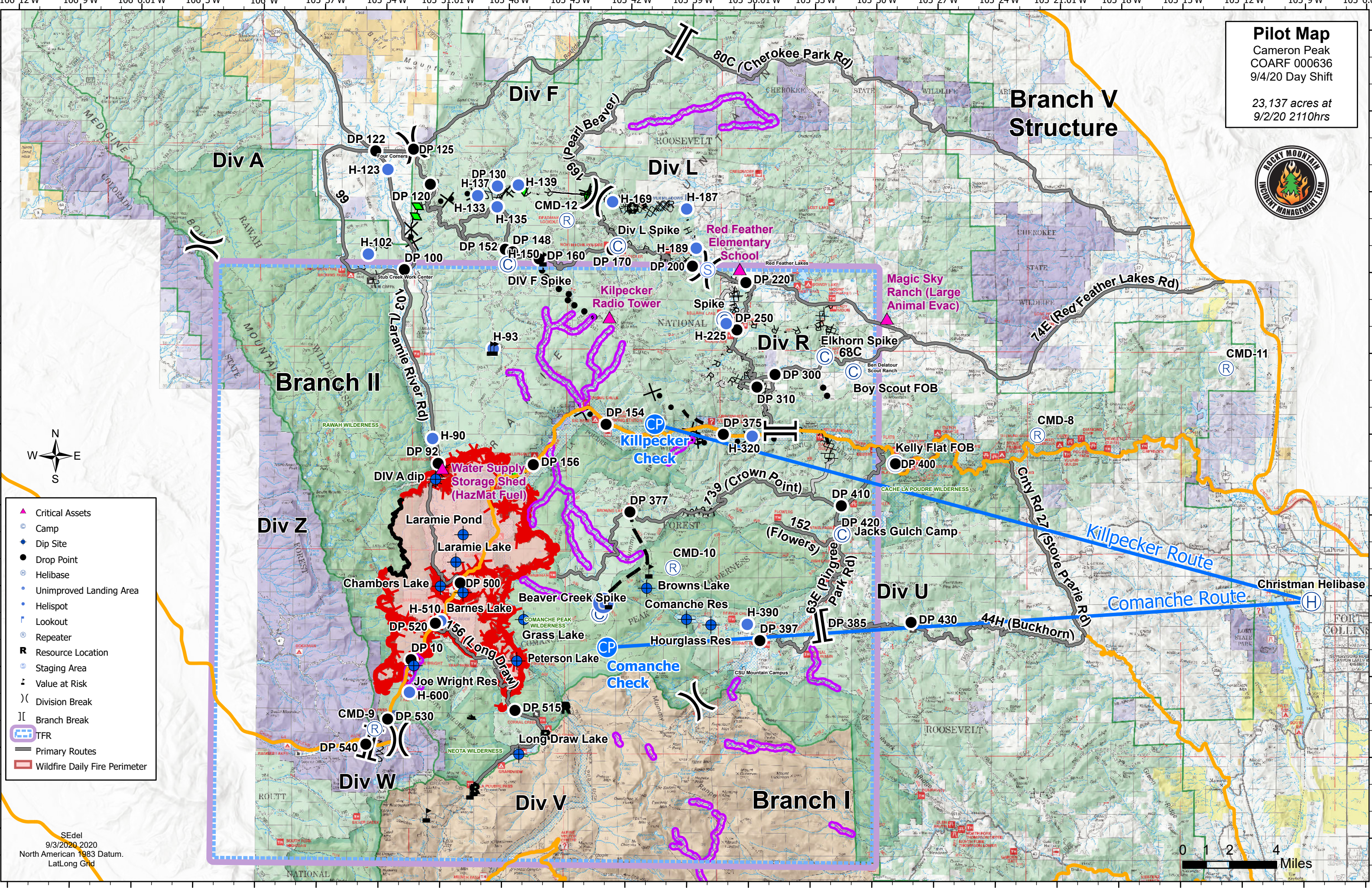
**Pilot Map**  
 Cameron Peak  
 COARF 000636  
 9/4/20 Day Shift

23,137 acres at  
 9/2/20 2110hrs



- ▲ Critical Assets
- ⊙ Camp
- ◆ Dip Site
- Drop Point
- ⊕ Helibase
- Unimproved Landing Area
- Helispot
- ⌄ Lookout
- ⊙ Repeater
- R** Resource Location
- ⊙ Staging Area
- ⌄ Value at Risk
- ) Division Break
- || Branch Break
- ⊕ TFR
- Primary Routes
- ▭ Wildfire Daily Fire Perimeter

SEdel  
 9/3/2020  
 North American 1983 Datum.  
 LatLong Grid





FeatureCategory	Label	Comments	Latitude	Longitude	Elevation
Dip Site	Joe Wright Res	Elevation 9900ft	40° 33.210'	-105° 52.360'	9900'
Dip Site	Chambers Lake	Elevation 9200ft	40° 36.170'	-105° 51.100'	9200'
Dip Site	Barnes Lake	9100ft	40° 35.940'	-105° 50.000'	9100'
Dip Site	Long Draw Lake	10,000ft	40° 29.960'	-105° 47.210'	10000'
Dip Site	Peterson Lake	9500	40° 33.420'	-105° 47.350'	9500'
Dip Site	Laramie Lake	9400	40° 37.070'	-105° 50.360'	9400'
Dip Site	Laramie Pond	small pond-9500 ft	40° 38.090'	-105° 50.020'	9500'
Dip Site	Grass Lake	small pond- 9900 ft	40° 34.960'	-105° 47.030'	9900'
Dip Site	Browns Lake	10,500ft	40° 36.160'	-105° 41.050'	10500'
Dip Site	Comanche Res	9400	40° 35.015'	-105° 39.101'	9400'
Dip Site	Hourglass Res	9400ft	40° 34.816'	-105° 37.908'	9400'
Dip Site	DIV A dip	8600	40° 40.137'	-105° 51.387'	8600'
Helibase	Christman Helibase	5150 ft	40° 35.780'	-105° 8.660'	5150'
Helispot	H-510	Approved for Type 3 only- use for picking up OH for recon missions on the fire. 9440'	40° 34.877'	-105° 51.067'	9440'
Helispot	H-150	Recon pickup site on the North side. Approved Type 2, Could fit a Type 1 or multiple aircraft for PSD ops. 9911'	40° 48.081'	-105° 47.951'	9911'
Helispot	H-90	Helispot along 103rd in Div A. Approved Type 2. 8428'	40° 43.307'	-105° 51.819'	8428'
Helispot	H-225	Type 3 only Elevation 8500'	40° 46.006'	-105° 37.267'	8500'
Helispot	H-390	Approved for Type 3 or Type 2. 9094'	40° 34.845'	-105° 36.138'	9094'
Helispot	H-93	Approved for Type 2. Elevation 9,700ft.	40° 45.003'	-105° 48.638'	9700'
Helispot	H-169	Approved for T-2 or T-3 Helicopter. 9100ft. Trees at NE corner	40° 50.496'	-105° 42.865'	9100'
Helispot	H-123	Type 3. 8362ft	40° 51.235'	-105° 53.000'	8362'
Helispot	H-600	Type 2 and Type 3	40° 32.220'	-105° 52.560'	10429'
Helispot	H-189	Approved for T2 and T3. 8400'. May need minor improvement	40° 48.797'	-105° 38.757'	8400'
Helispot	H-187		40° 50.250'	-105° 39.240'	8500'
Helispot	H-133	Approved T-2 or T-3 helicopter	40° 50.668'	-105° 49.368'	9500'
Helispot	H-320	Approved T-2 or T-3 helicopter	40° 41.830'	-105° 35.960'	7100'
Helispot	H-135	Approved T-2	40° 50.670'	-105° 49.370'	5200'
Helispot	H-137	Approved T-2 or T-3 helicopter	40° 51.039'	-105° 48.501'	10100'
Helispot	H-139	Approved T-2 or T-3 helicopter	40° 51.088'	-105° 47.477'	10250'
Helispot	H-102	Approved T-2	40° 48.470'	-105° 54.780'	8400'
Lookout		Deadman Lookout Tower	40° 49.808'	-105° 45.107'	10700'
Mobile Weather Unit	IRAWS 32	W Branch Trail	40° 40.740'	-105° 51.240'	8600'
Mobile Weather Unit	IRAWS 35	Chambers Lake	40° 36.000'	-105° 51.060'	9200'
Mobile Weather Unit	IRAWS 28	CSU Campus	40° 34.080'	-105° 35.340'	9000'
Mobile Weather Unit	IRAWS 29	Cameron Pass	40° 31.140'	-105° 53.520'	10250'
Repeater	CMD-8		40° 41.925'	-105° 22.043'	7300'
Repeater	CMD-9		40° 30.851'	-105° 54.231'	11600'
Repeater	CMD-10	Crown Point Repeater	40° 36.925'	-105° 39.777'	11600'
Repeater	CMD-11	Bonner Peak Repeater	40° 44.431'	-105° 12.841'	6800'
Repeater	CMD-12	Deadman Repeater	40° 49.789'	-105° 45.095'	10700'
Resource Location		Fish Study Project Tag Collection Equipment	40° 31.666'	-105° 44.939'	9600'
Resource Location		Fish Study Project Tag Collection Equipment	40° 31.745'	-105° 44.971'	9600'
Value at Risk		Historic Cabins	40° 45.009'	-105° 48.554'	9700'
Value at Risk		Historic Cabins	40° 45.008'	-105° 48.723'	9700'
Value at Risk		SNOTEL weather station	40° 48.343'	-105° 46.203'	10240'
Value at Risk		Ditch Cabin	40° 27.658'	-105° 51.638'	10200'
Value at Risk		Cabin	40° 28.654'	-105° 49.338'	10200'