

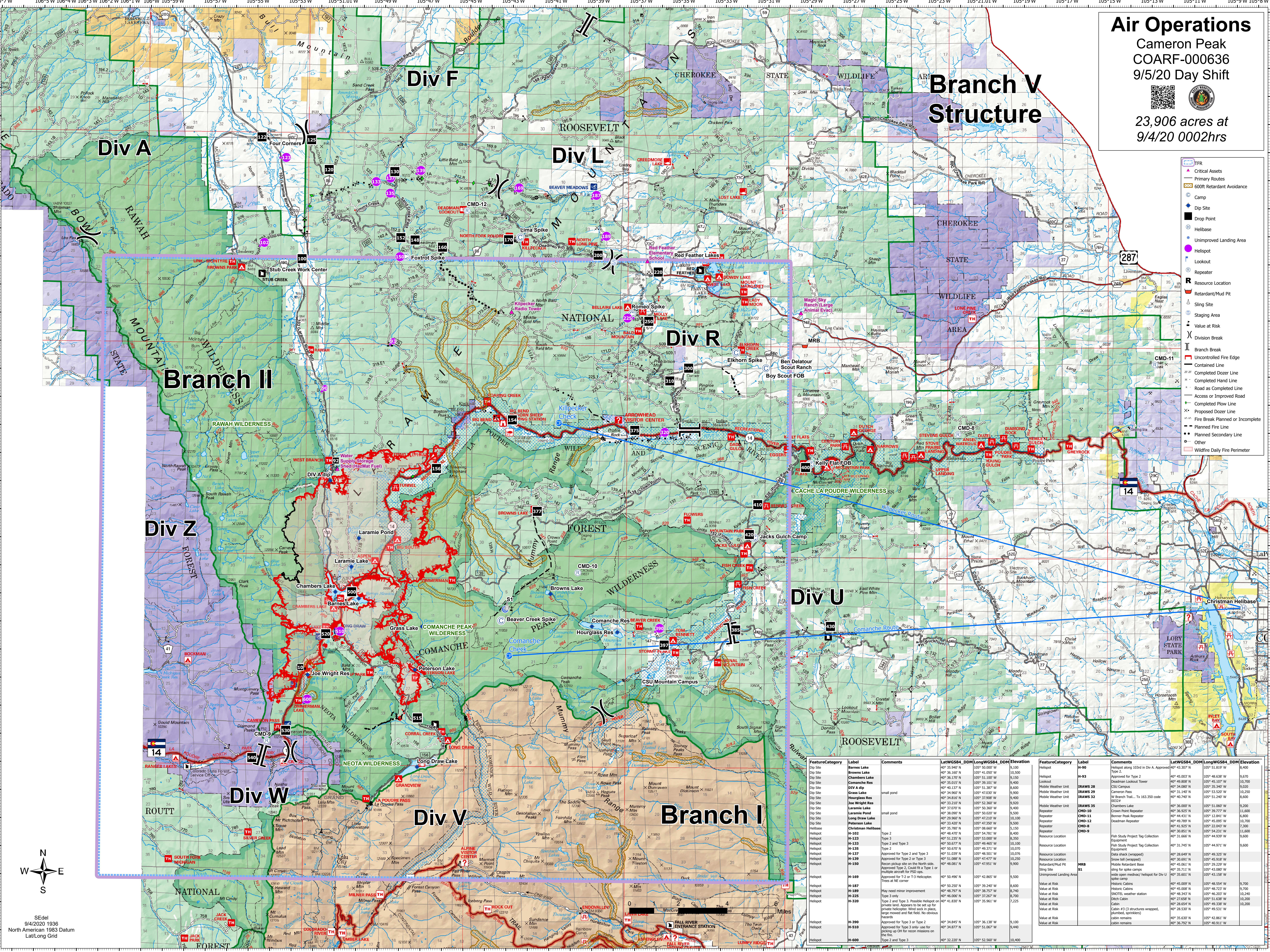
Air Operations

Cameron Peak
COARF-000636
9/5/20 Day Shift



23,906 acres at
9/4/20 0002hrs

Branch V Structure



- TFR
- Critical Assets
- Primary Routes
- 600ft Retardant Avoidance
- Camp
- Dip Site
- Dip Point
- Helibase
- Unimproved Landing Area
- Lookout
- Repeater
- Resource Location
- Retardant/Mud Pit
- Site Sign
- Staging Area
- Value at Risk
- Division Break
- Branch Break
- Uncontrolled Fire Edge
- Contained Line
- Completed Dozer Line
- Completed Hand Line
- Road as Completed Line
- Access or Improved Road
- Completed Plow Line
- Proposed Dozer Line
- Fire Break Planned or Incomplete
- Planned Fire Line
- Planned Secondary Line
- Other
- Wildfire Daily Fire Perimeter

FeatureCategory	Label	Comments	LatWGS84_DDM	LongWGS84_DDM	Elevation	FeatureCategory	Label	Comments	LatWGS84_DDM	LongWGS84_DDM	Elevation
Helibase	Barnes Lake	Approved for Type 2 or T-3 Helicopter. Please see NE corner.	40° 35.947 N	105° 50.000 W	9,100	Helibase	H-90	Helibase along 103rd in Div A. Approved for Type 2.	40° 43.307 N	105° 51.819 W	8,400
Dip Site	Browns Lake	Approved for Type 2 or T-3 Helicopter. Please see NE corner.	40° 36.170 N	105° 51.300 W	9,150	Helibase	H-93	Approved for Type 2.	40° 45.003 N	105° 48.638 W	9,670
Dip Site	Chambers Lake	Approved for Type 2 or T-3 Helicopter. Please see NE corner.	40° 36.015 N	105° 50.101 W	9,400	Lookout	LOOKOUT	Lookout	40° 49.808 N	105° 45.107 W	10,700
Dip Site	DIVA dip	Approved for Type 2 or T-3 Helicopter. Please see NE corner.	40° 40.137 N	105° 51.267 W	8,600	Mobile Weather Unit	IRAWS 28	CSU Campus	40° 34.087 N	105° 35.387 W	9,000
Dip Site	Grass Lake	Approved for Type 2 or T-3 Helicopter. Please see NE corner.	40° 34.960 N	105° 47.930 W	9,900	Mobile Weather Unit	IRAWS 29	Cameron Pass	40° 31.140 N	105° 53.520 W	10,250
Dip Site	Hourglass Res	Approved for Type 2 or T-3 Helicopter. Please see NE corner.	40° 34.816 N	105° 50.360 W	9,400	Mobile Weather Unit	IRAWS 32	W Branch Trail. Tx 163.350 code 00314.	40° 40.740 N	105° 51.240 W	8,600
Dip Site	Laramie Pond	Approved for Type 2 or T-3 Helicopter. Please see NE corner.	40° 37.070 N	105° 50.360 W	9,400	Mobile Weather Unit	IRAWS 35	Chambers Lake	40° 36.000 N	105° 51.060 W	9,200
Dip Site	Long Draw Lake	Approved for Type 2 or T-3 Helicopter. Please see NE corner.	40° 29.960 N	105° 47.210 W	10,100	Repeater	CMD-10	Crown Point Repeater	40° 36.925 N	105° 39.777 W	11,600
Dip Site	Peterson Lake	Approved for Type 2 or T-3 Helicopter. Please see NE corner.	40° 33.620 N	105° 47.200 W	9,900	Repeater	CMD-11	Horner Peak Repeater	40° 44.111 N	105° 42.941 W	6,400
Helibase	Christian Helibase	Approved for Type 2 or T-3 Helicopter. Please see NE corner.	40° 35.780 N	105° 08.660 W	5,150	Repeater	CMD-12	Deedman Lookout	40° 49.789 N	105° 45.095 W	10,700
Helibase	H-102	Approved for Type 2 or T-3 Helicopter. Please see NE corner.	40° 48.470 N	105° 44.781 W	8,400	Repeater	CMD-9	Deadman Study	40° 41.925 N	105° 22.943 W	7,300
Helibase	H-123	Approved for Type 2 or T-3 Helicopter. Please see NE corner.	40° 51.235 N	105° 47.200 W	8,750	Repeater	CMD-9	High Study Project Tag Collection Equipment	40° 38.851 N	105° 54.211 W	11,600
Helibase	H-130	Approved for Type 2 or T-3 Helicopter. Please see NE corner.	40° 50.677 N	105° 49.465 W	10,100	Resource Location	MRB	Mobile Retardant Base	40° 31.666 N	105° 44.939 W	9,600
Helibase	H-132	Approved for Type 2 or T-3 Helicopter. Please see NE corner.	40° 50.670 N	105° 49.371 W	10,070	Resource Location	S1	Site Sign	40° 35.711 N	105° 43.080 W	9,600
Helibase	H-135	Approved for Type 2 or T-3 Helicopter. Please see NE corner.	40° 51.039 N	105° 47.200 W	10,100	Resource Location	S1	Unimproved Landing Area	40° 35.611 N	105° 43.138 W	9,600
Helibase	H-136	Approved for Type 2 or T-3 Helicopter. Please see NE corner.	40° 51.088 N	105° 47.477 W	10,250	Resource Location	S1	Unimproved Landing Area	40° 35.611 N	105° 43.138 W	9,600
Helibase	H-150	Approved for Type 2 or T-3 Helicopter. Please see NE corner.	40° 48.081 N	105° 47.951 W	9,900	Resource Location	S1	Unimproved Landing Area	40° 35.611 N	105° 43.138 W	9,600
Helibase	H-167	Approved for Type 2 or T-3 Helicopter. Please see NE corner.	40° 50.496 N	105° 42.865 W	9,500	Resource Location	S1	Unimproved Landing Area	40° 35.611 N	105° 43.138 W	9,600
Helibase	H-189	Approved for Type 2 or T-3 Helicopter. Please see NE corner.	40° 50.250 N	105° 39.240 W	8,600	Resource Location	S1	Unimproved Landing Area	40° 35.611 N	105° 43.138 W	9,600
Helibase	H-225	Approved for Type 2 or T-3 Helicopter. Please see NE corner.	40° 46.206 N	105° 37.267 W	8,700	Resource Location	S1	Unimproved Landing Area	40° 35.611 N	105° 43.138 W	9,600
Helibase	H-330	Approved for Type 2 or T-3 Helicopter. Please see NE corner.	40° 41.830 N	105° 35.961 W	7,225	Resource Location	S1	Unimproved Landing Area	40° 35.611 N	105° 43.138 W	9,600
Helibase	H-390	Approved for Type 2 or T-3 Helicopter. Please see NE corner.	40° 34.845 N	105° 36.138 W	9,100	Resource Location	S1	Unimproved Landing Area	40° 35.611 N	105° 43.138 W	9,600
Helibase	H-510	Approved for Type 2 or T-3 Helicopter. Please see NE corner.	40° 34.877 N	105° 51.067 W	9,440	Resource Location	S1	Unimproved Landing Area	40° 35.611 N	105° 43.138 W	9,600
Helibase	H-600	Approved for Type 2 or T-3 Helicopter. Please see NE corner.	40° 32.220 N	105° 53.560 W	10,400	Resource Location	S1	Unimproved Landing Area	40° 35.611 N	105° 43.138 W	9,600

SEdel
9/4/2020 1936
North American 1983 Datum
Lat/Long Grid