

# IAP Index





09/05/2020

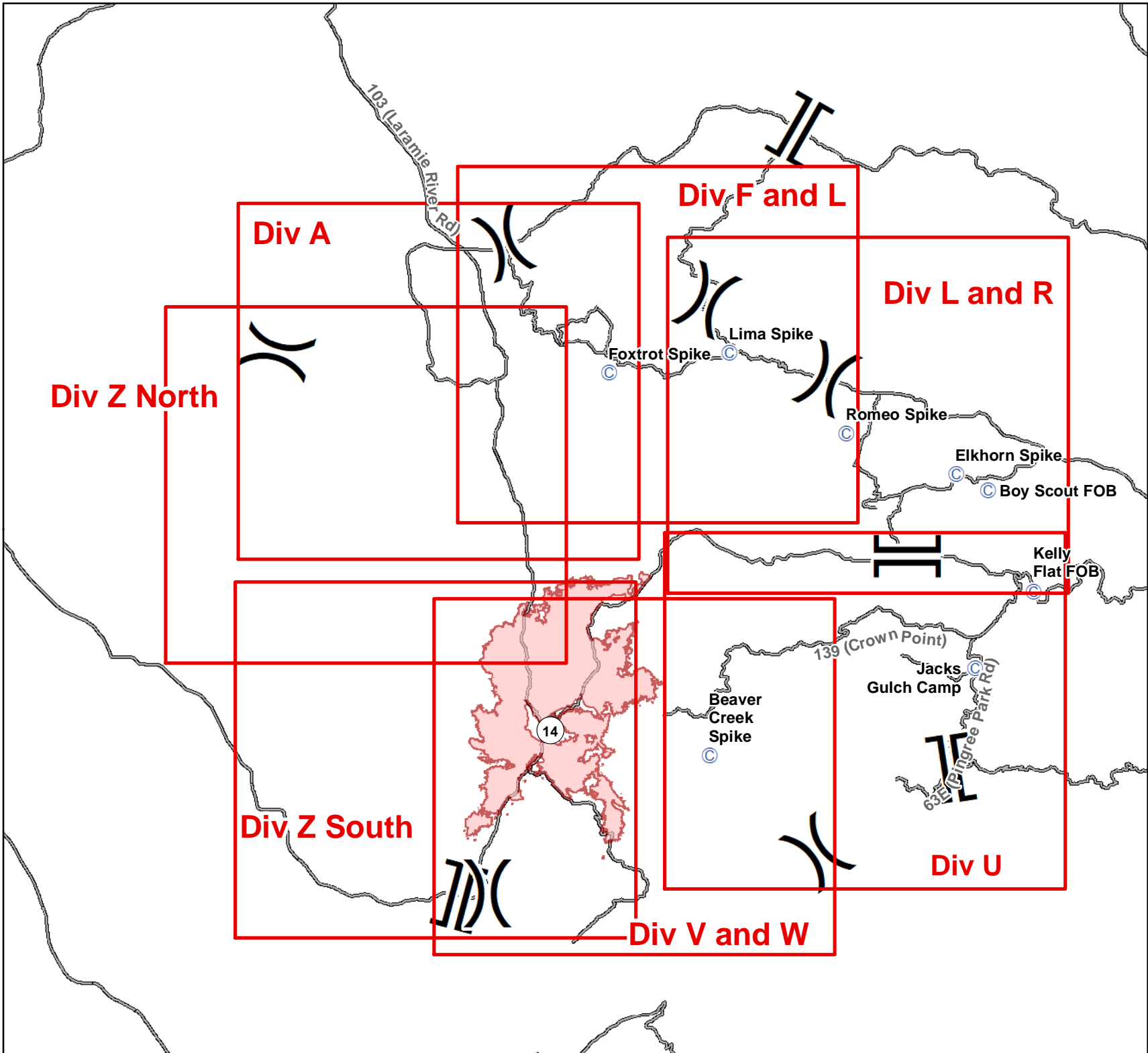
**Cameron Peak**  
CO-ARF 000636

23,903 Acres  
as of 0002 09/04



0 1.5 3 6 Miles

-  Page Indicator
-  Camp
-  Division Break
-  Branch Break
-  Fire Perimeter
-  Closure Area
-  Major Roads



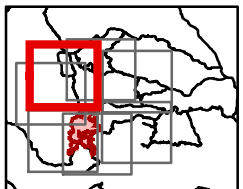
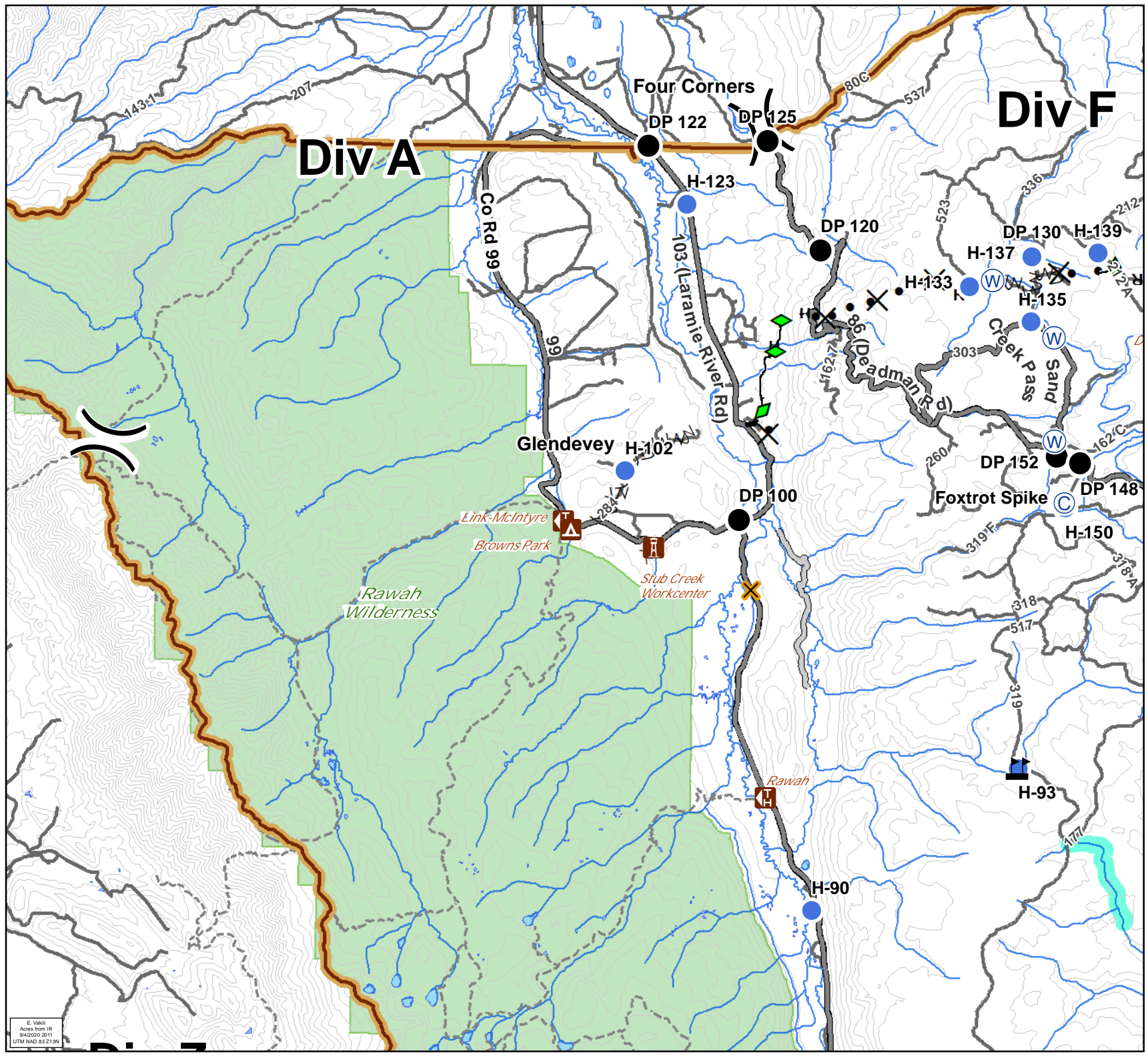
**IAP**  
 09/05/2020  
**Cameron Peak**  
 CO-ARF 000636  
 23,903 Acres  
 as of 0002 09/04



0 0.250.5 1  
 Miles

**Div A**  
**Branch II**

- Campground
- Other Recreation Site
- Trailhead
- Camp
- Closure
- Drop Point
- Helispot
- Water Source
- Value at Risk
- Division Break
- Completed Dozer Line
- Completed Hand Line
- Road as Completed Line
- Access or Improved Road
- Completed Plow Line
- Proposed Dozer Line
- Fire Break Planned or Incomplete
- Closure Area
- County Road
- Other Road
- Trail
- 600ft Retardant Avoidance Waterways
- Wilderness Areas

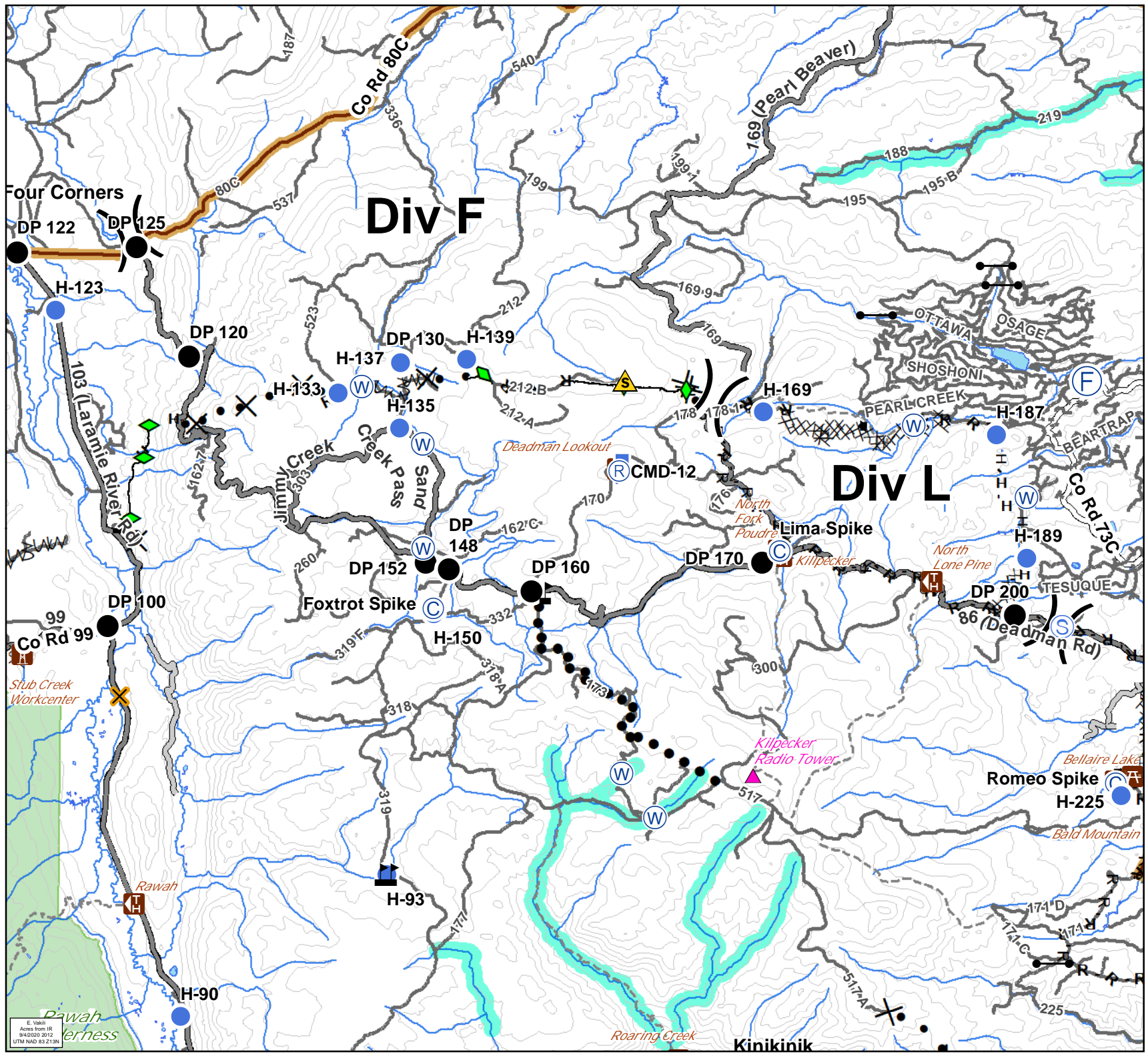


E. Vail  
 Area from IR  
 9/4/2020 2:11  
 UTM NAD 83 213N

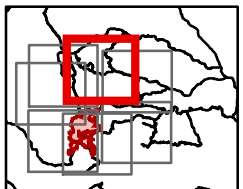
**IAP**  
 09/05/2020  
**Cameron Peak**  
 CO-ARF 000636  
 23,903 Acres  
 as of 0002 09/04  
**Div F and L**  
**Branch II**



- Critical Assets
- Campground
- Picnic Site
- Other Recreation Site
- Trailhead
- Camp
- Closure
- Drop Point
- Fire Station
- Gate
- Helispot
- Lookout
- Repeater
- Safety Zone
- Staging Area
- Water Source
- Value at Risk
- Division Break
- Completed Dozer Line
- Completed Hand Line
- Road as Completed Line
- Access or Improved Road
- Completed Plow Line
- Proposed Dozer Line
- Fire Break Planned or Incomplete
- Planned Fire Line
- Planned Secondary Line
- Closure Area
- County Road
- Other Road
- Trail
- 600ft Retardant Avoidance Waterways
- Wilderness Areas



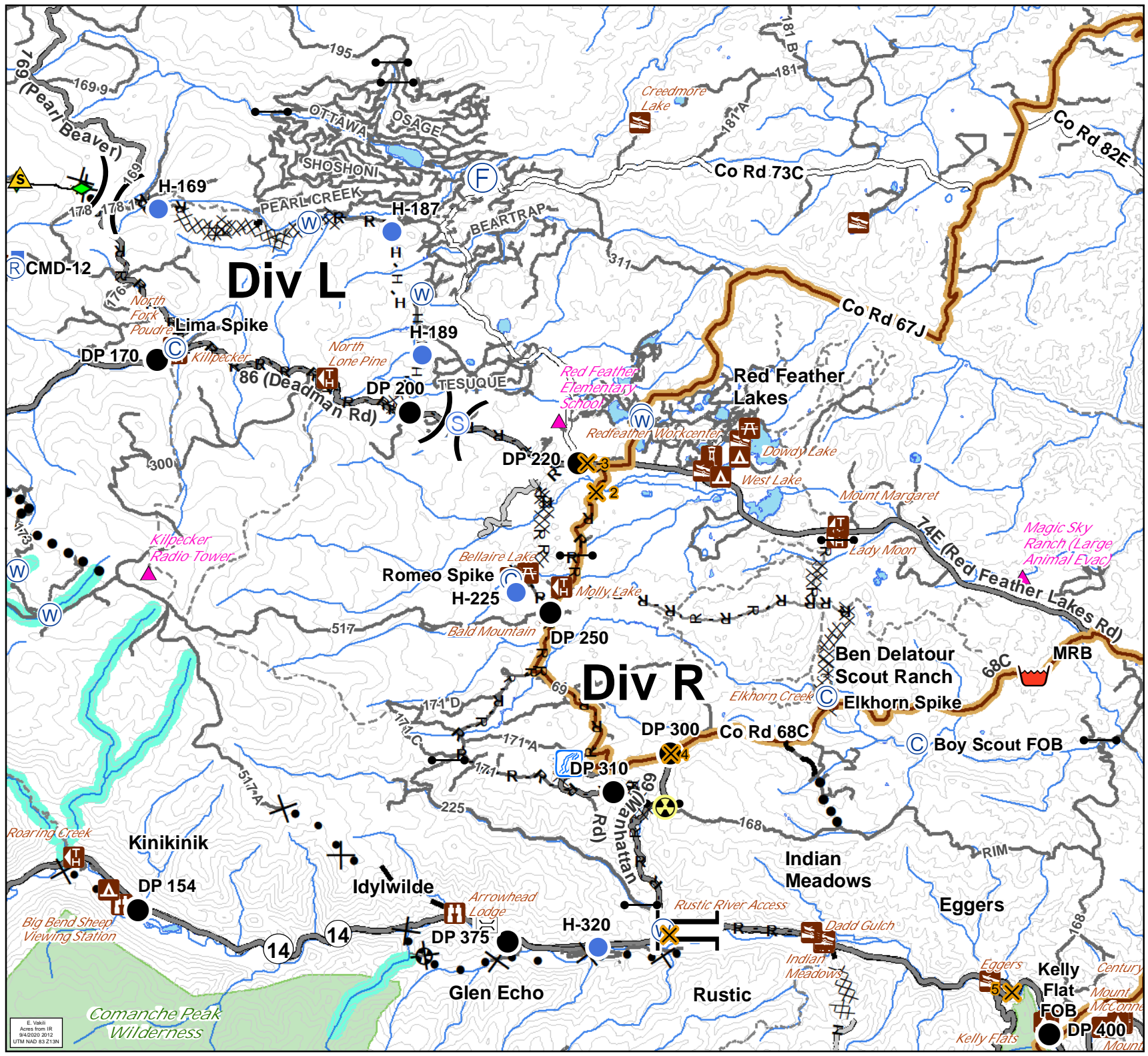
E. Vail  
 Area from IR  
 9/4/2020 2012  
 UTM NAD 83 213N







- Critical Assets
- Water Access
- Campground
- Day Use Area
- Picnic Site
- Other Recreation Site
- Trailhead
- Bridge
- Camp
- Closure
- Drop Point
- Fire Station
- Gate
- Hazard
- Helispot
- Lookout
- Repeater
- Retardant/Mud Pit
- Safety Zone
- Staging Area
- Stream Crossing
- Water Source
- Division Break
- Branch Break
- Completed Dozer Line
- Completed Hand Line
- Road as Completed Line
- Access or Improved Road
- Completed Plow Line
- Proposed Dozer Line
- Planned Fire Line
- Planned Secondary Line
- Closure Area
- Primary Route
- County Road
- Other Road
- Trail
- 600ft Retardant Avoidance Waterways
- Wilderness Areas



E. Vail  
 Area from IR  
 9/4/2020 2012  
 UTM NAD 83 213N

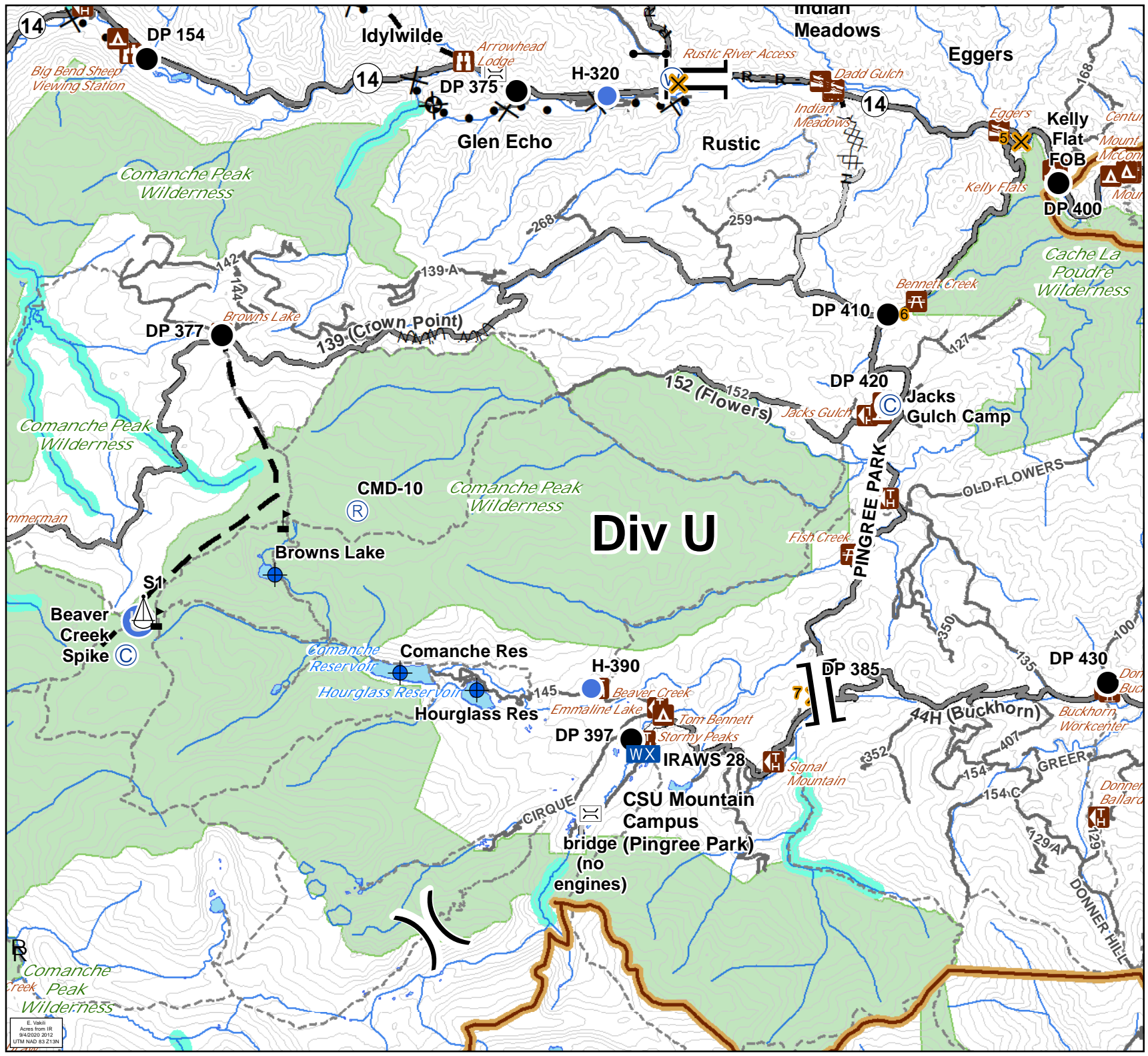


**IAP**  
 09/05/2020  
**Cameron Peak**  
 CO-ARF 000636  
 23,903 Acres  
 as of 0002 09/04

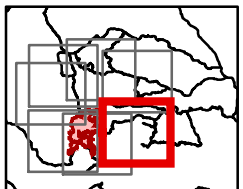


**Div U**  
**Branch I**

- Water Access
- Campground
- Day Use Area
- Picnic Site
- Other Recreation Site
- Trailhead
- Bridge
- Camp
- Closure
- Dip Site
- Drop Point
- Gate
- Unimproved Landing Area
- Helispot
- Mobile Weather Unit
- Repeater
- Fish Study Equipment
- Sling Site
- Water Source
- Value at Risk
- Division Break
- Branch Break
- H - H Completed Hand Line
- R - R Road as Completed Line
- Access or Improved Road
- X - X Proposed Dozer Line
- Fire Break Planned or Incomplete
- Planned Fire Line
- Closure Area
- Primary Route
- County Road
- Arterial or Collector Road
- Other Road
- Trail
- 600ft Retardant Avoidance Waterways
- Wilderness Areas



E. Vail  
 Area from IR  
 9/4/2020 2012  
 UTM NAD 83 210N





# IAP

09/05/2020

## Cameron Peak

CO-ARF 000636

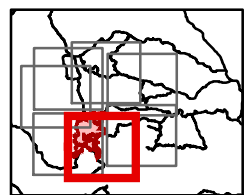
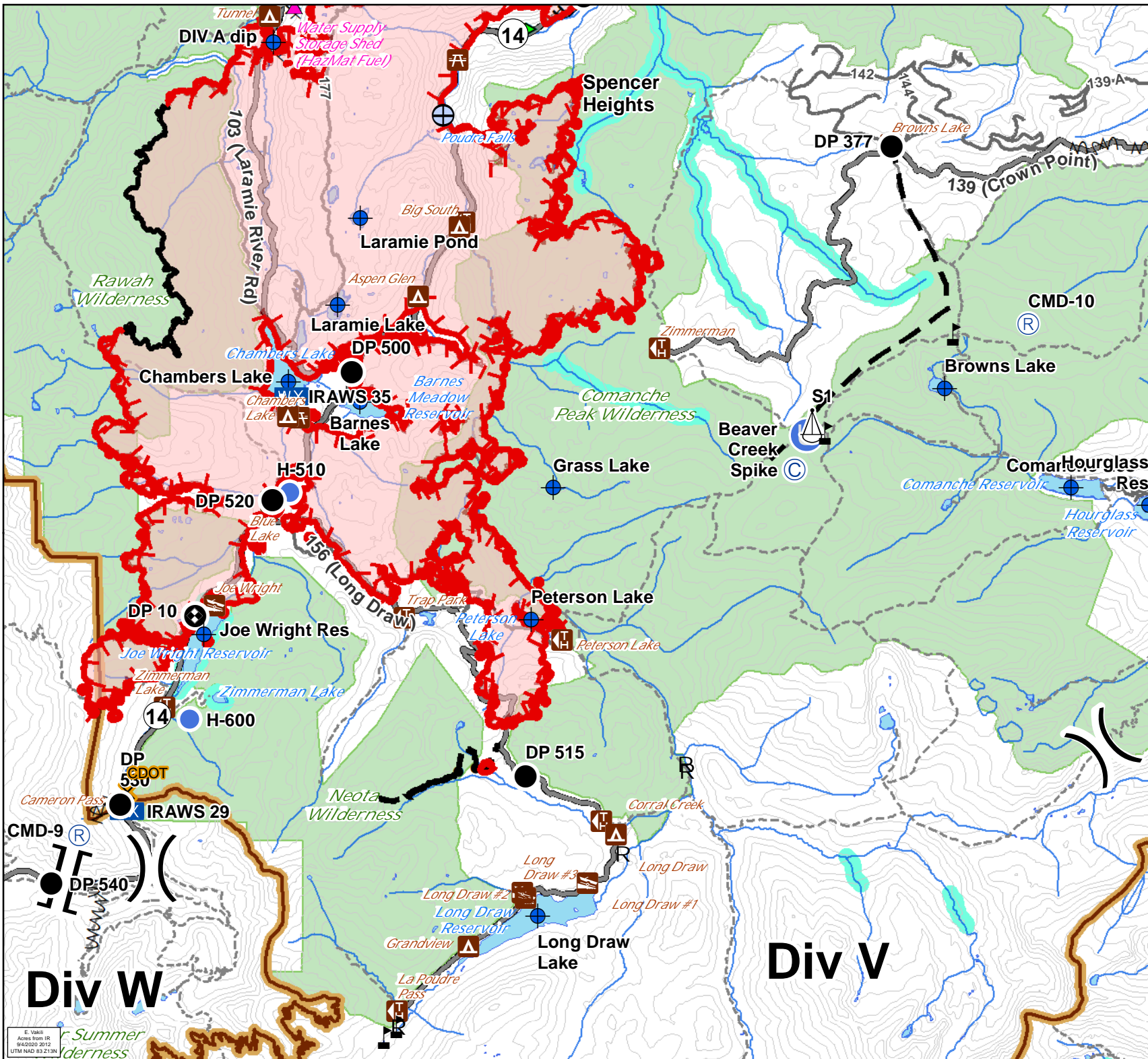
23,903 Acres

as of 0002 09/04

## Div V and W

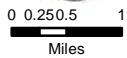
### Branch I

- Water Access
- Campground
- Picnic Site
- Trailhead
- Verizon COW
- Camp
- Closure
- Dip Site
- Drop Point
- Unimproved Landing Area
- Helispot
- Mobile Weather Unit
- Repeater
- Fish Study Equipment
- Sling Site
- Draft Site
- Value at Risk
- Division Break
- Branch Break
- Uncontrolled Fire Edge
- Contained Line
- Completed Dozer Line
- Completed Hand Line
- Fire Break Planned or Incomplete
- Planned Fire Line
- Planned Secondary Line
- Fire Perimeter
- Closure Area
- Primary Route
- County Road
- Other Road
- Trail
- 600ft Retardant Avoidance Waterways
- Wilderness Areas

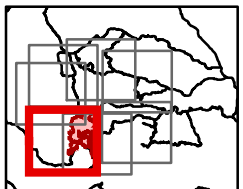
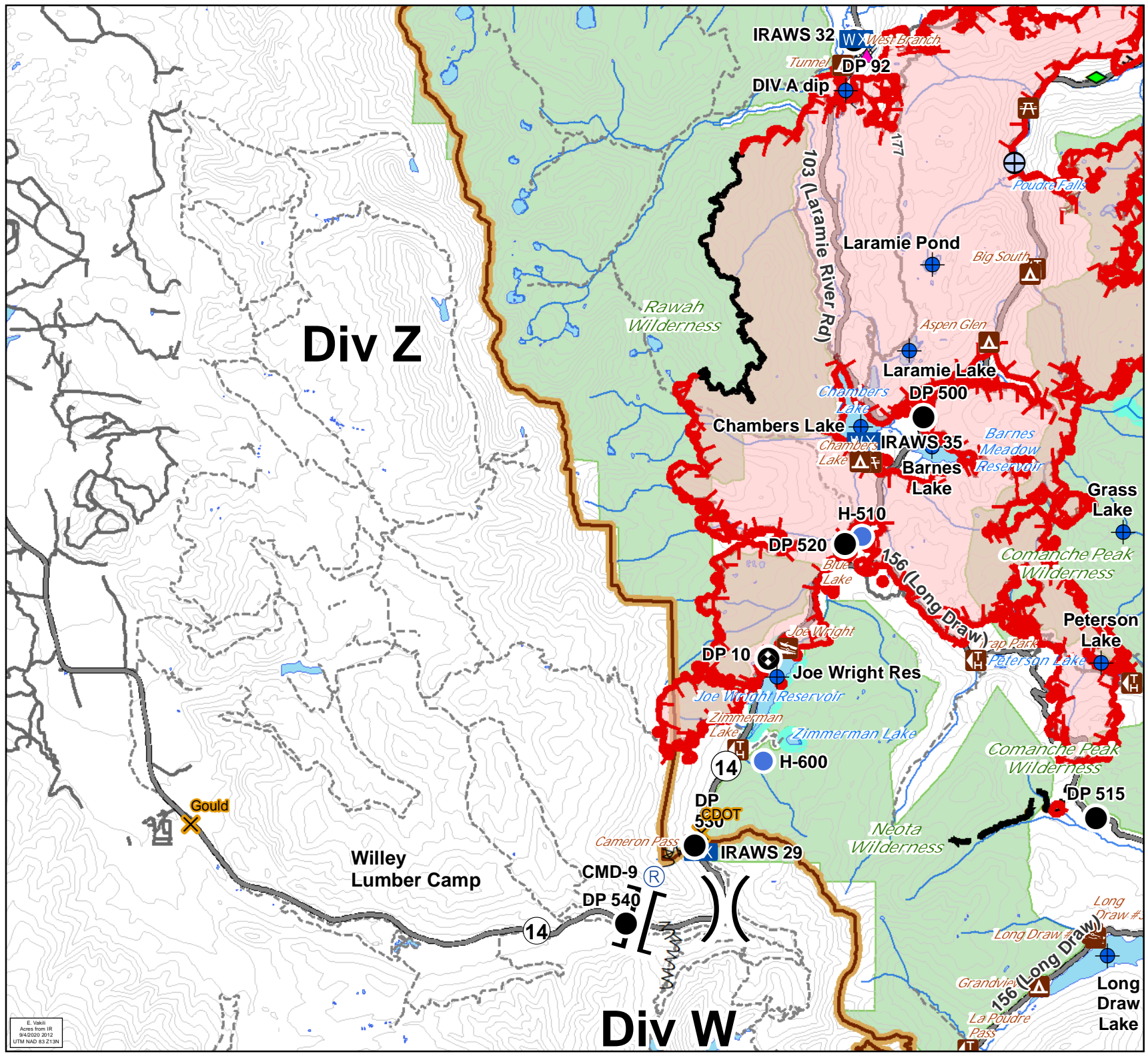


E. Vail  
Aerial from IR  
9/4/2020 2012  
UTM NAD 83 213N

**IAP**  
 09/05/2020  
**Cameron Peak**  
 CO-ARF 000636  
 23,903 Acres  
 as of 0002 09/04  
**Div Z South**  
**Branch II**



- Critical Assets
- Water Access
- Campground
- Picnic Site
- Trailhead
- Verizon COW
- Closure
- Dip Site
- Drop Point
- Helispot
- Mobile Weather Unit
- Repeater
- Draft Site
- Division Break
- Branch Break
- Uncontrolled Fire Edge
- Contained Line
- Completed Dozer Line
- Completed Hand Line
- Road as Completed Line
- Completed Plow Line
- Fire Break Planned or Incomplete
- Planned Fire Line
- Planned Secondary Line
- Fire Perimeter
- Closure Area
- Primary Route
- County Road
- Other Road
- Trail
- 600ft Retardant Avoidance Waterways
- Wilderness Areas



E. Vail  
 Area from IR  
 9/4/2020 2012  
 UTM NAD 83 219N

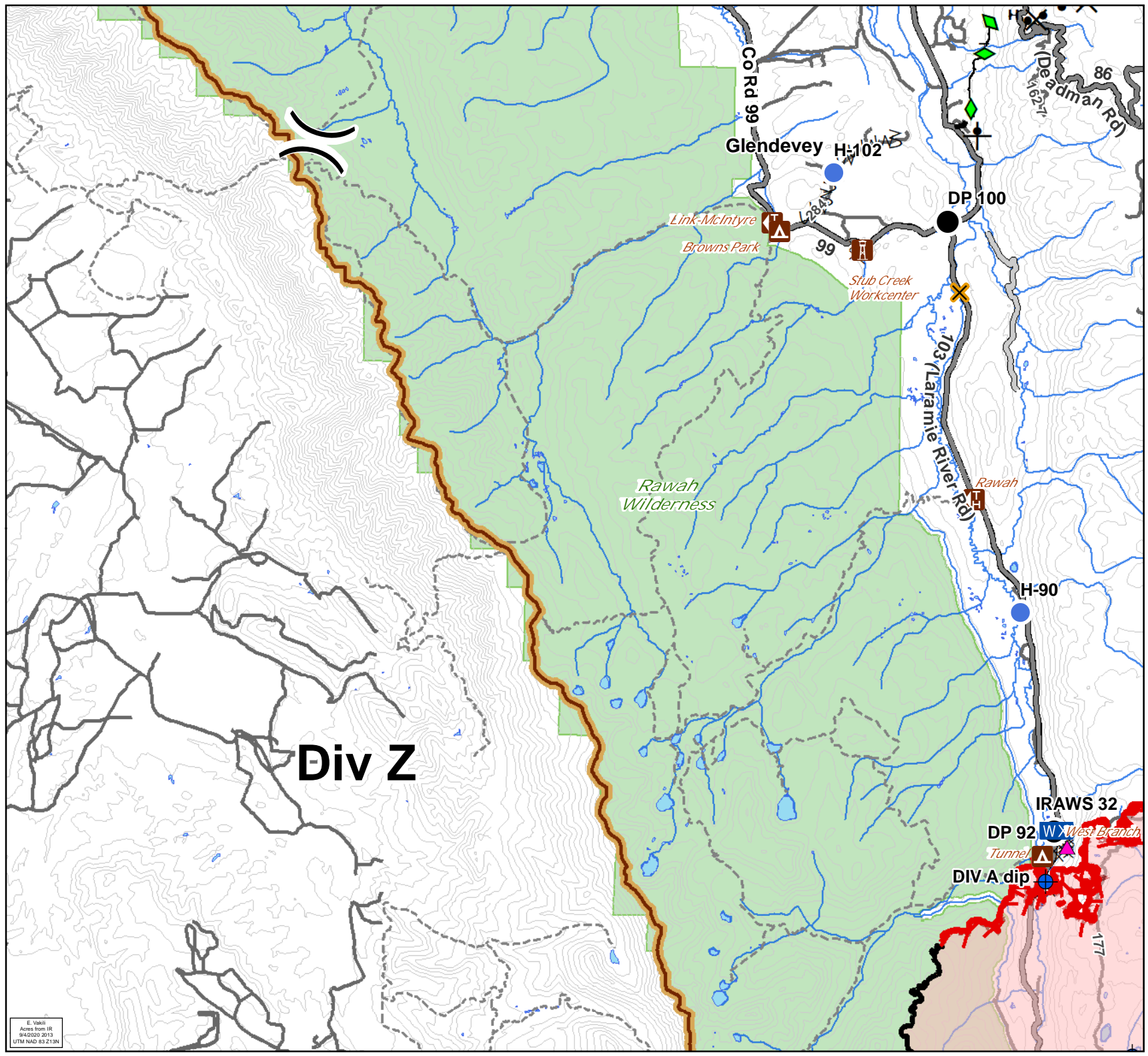


**IAP**  
 09/05/2020  
**Cameron Peak**  
 CO-ARF 000636  
 23,903 Acres  
 as of 0002 09/04

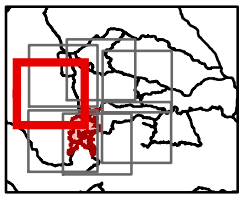


**Div Z North  
 Branch II**

- Critical Assets
- Campground
- Other Recreation Site
- Trailhead
- Closure
- Dip Site
- Drop Point
- Helispot
- Mobile Weather Unit
- Division Break
- Uncontrolled Fire Edge
- Contained Line
- Completed Dozer Line
- Completed Hand Line
- Road as Completed Line
- Access or Improved Road
- Completed Plow Line
- Proposed Dozer Line
- Fire Break Planned or Incomplete
- Fire Perimeter
- Closure Area
- County Road
- Other Road
- Trail
- Wilderness Areas



**Div Z**



E. Vank  
 Area from IR  
 9/4/2020 2013  
 UTM NAD 83 219N