

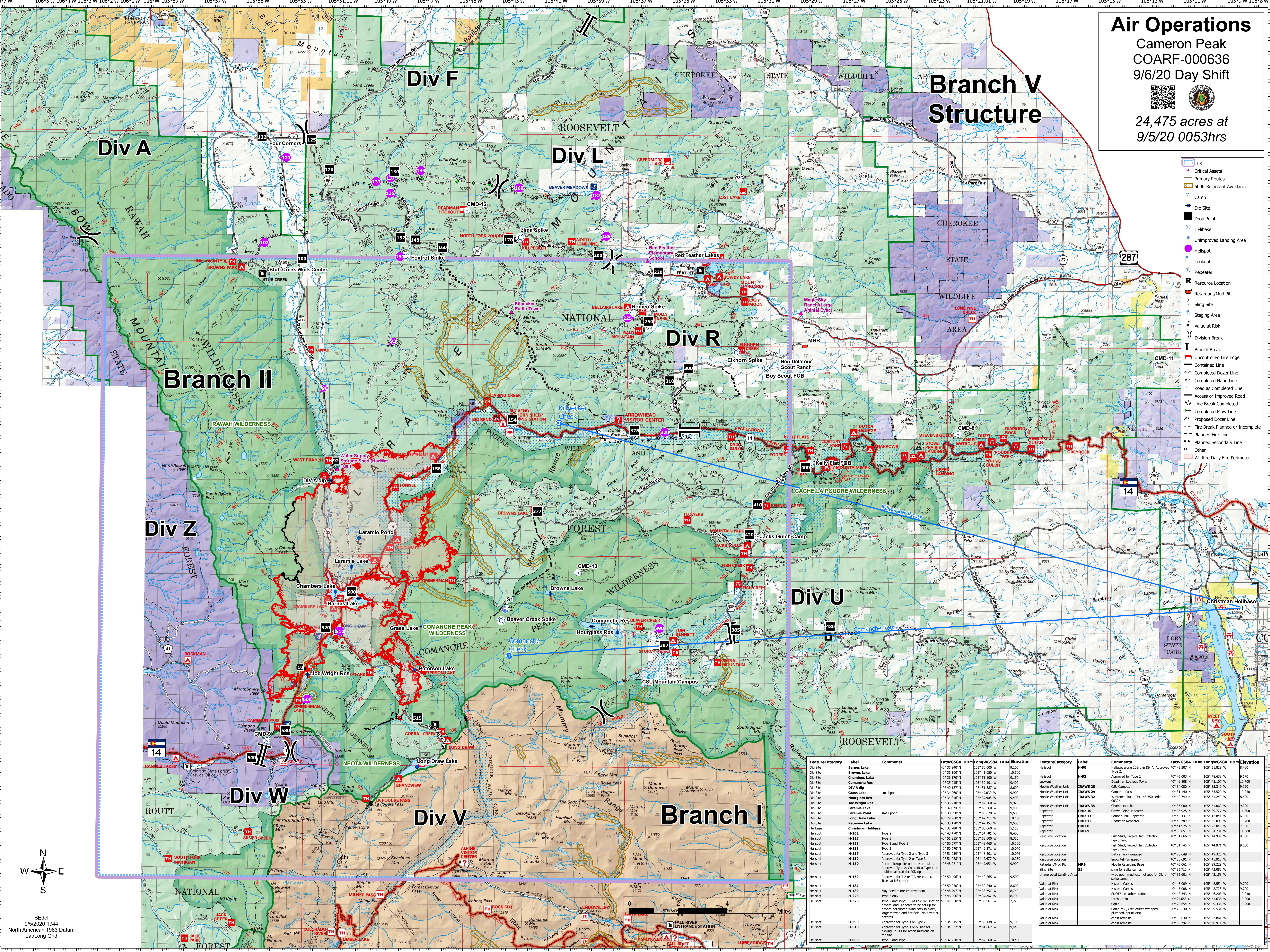


# Air Operations

Cameron Peak  
COARF-000636  
9/6/20 Day Shift

24,475 acres at  
9/5/20 0053hrs



- TFR
- Critical Assets
- Primary Routes
- 600ft Retardant Avoidance
- Camp
- Dip Site
- Dip Point
- Helibase
- Unimproved Landing Area
- Lookout
- Heliport
- Repeater
- Resource Location
- Retardant/Mud Pit
- Sling Site
- Staging Area
- Value at Risk
- Division Break
- Uncontrolled Fire Edge
- Contained Line
- Completed Dozer Line
- Completed Hand Line
- Road as Completed Line
- Access or Improved Road
- Line Break Completed
- Proposed Flow Line
- Completed Dozer Line
- Fire Break Planned or Incomplete
- Planned Fire Line
- Other
- Wildfire Daily Fire Perimeter

FeatureCategory	Label	Comments	LatWGS84_DDM	LongWGS84_DDM	Elevation	FeatureCategory	Label	Comments	LatWGS84_DDM	LongWGS84_DDM	Elevation
Heliport	Barnes Lake		40° 35.947 N	105° 50.000 W	9,100	Heliport	H-90	Heliport along 103rd in Div A. Approved	40° 43.307 N	105° 51.819 W	8,400
Dip Site	Browns Lake		40° 36.100 N	105° 51.300 W	9,150	Heliport	H-93	Approved for Type 2	40° 45.003 N	105° 48.638 W	9,670
Dip Site	Chambers Lake		40° 35.015 N	105° 39.101 W	9,400	Heliport	H-94	Mountain Lookout Tower	40° 49.808 N	105° 45.107 W	10,700
Dip Site	Div A dip		40° 40.137 N	105° 51.800 W	8,600	Mobile Weather Unit	IRAWS 28	CSU Campus	40° 34.887 N	105° 35.347 W	9,000
Dip Site	Grass Lake	small pond	40° 34.960 N	105° 47.830 W	9,900	Mobile Weather Unit	IRAWS 29	Cameron Pass	40° 31.140 N	105° 53.520 W	10,250
Dip Site	Hourglass Res		40° 34.816 N	105° 37.908 W	9,400	Mobile Weather Unit	IRAWS 32	W Branch Trail, TX 163.350 code 00314	40° 40.740 N	105° 51.240 W	8,600
Dip Site	Jas Wright Res		40° 33.210 N	105° 49.200 W	9,900	Repeater	IRAWS 35	Chambers Lake	40° 36.000 N	105° 51.060 W	9,200
Dip Site	Laramie Pond	small pond	40° 37.070 N	105° 50.360 W	9,400	Repeater	CHD-10	Crown Point Repeater	40° 36.925 N	105° 39.777 W	11,600
Dip Site	Long Draw Lake		40° 29.960 N	105° 47.210 W	10,100	Repeater	CHD-11	Hoover Peak Repeater	40° 44.111 N	105° 42.941 W	6,400
Dip Site	Peterson Lake		40° 33.620 N	105° 47.200 W	9,500	Repeater	CHD-12	Deedman Study	40° 49.789 N	105° 45.095 W	10,700
Helibase	Christian Helibase		40° 35.780 N	105° 08.660 W	5,150	Repeater	CHD-8	Hoover Peak Repeater	40° 41.925 N	105° 22.943 W	7,300
Helibase	H-102	Type 2	40° 48.470 N	105° 44.781 W	8,400	Repeater	CHD-9	Hoover Peak Repeater	40° 38.851 N	105° 54.211 W	11,600
Helibase	H-123	Type 3	40° 51.235 N	105° 47.200 W	8,750	Resource Location	MRB	High Study Project Tag Collection Equipment	40° 31.666 N	105° 44.939 W	9,600
Helibase	H-130	Type 2 and Type 3	40° 50.677 N	105° 49.465 W	10,100	Resource Location	S1	Unimproved Landing Area	40° 31.745 N	105° 44.971 W	9,600
Helibase	H-132	Type 2	40° 50.670 N	105° 49.371 W	10,070	Resource Location		Data shack (wrapped)	40° 28.649 N	105° 49.325 W	9,100
Helibase	H-135	Approved for Type 2 or Type 3	40° 51.039 N	105° 47.200 W	10,070	Resource Location		Shore hill (wrapped)	40° 28.649 N	105° 49.325 W	9,100
Helibase	H-136	Approved for Type 2 or Type 3	40° 51.088 N	105° 47.477 W	10,250	Resource Location		Shore hill (wrapped)	40° 28.649 N	105° 49.325 W	9,100
Helibase	H-150	Recon pickup site on the North side. Approved Type 2. Good fit in Type 1 or multiple aircraft for PSD ops.	40° 48.081 N	105° 47.951 W	9,900	Resource Location		Shore hill (wrapped)	40° 28.649 N	105° 49.325 W	9,100
Helibase	H-167	Approved for T-2 or T-3 Helicopters. There is NE corner.	40° 50.496 N	105° 42.865 W	9,500	Sling Site		Sling for spike camps	40° 35.711 N	105° 29.229 W	11,600
Helibase	H-169		40° 50.250 N	105° 39.240 W	8,600	Unimproved Landing Area		Sling for spike camps	40° 35.601 N	105° 43.138 W	9,600
Helibase	H-189	May need minor improvement	40° 48.797 N	105° 38.257 W	8,740	Unimproved Landing Area		Sling for spike camps	40° 35.601 N	105° 43.138 W	9,600
Helibase	H-225	Type 3 only	40° 46.026 N	105° 37.247 W	8,700	Unimproved Landing Area		Sling for spike camps	40° 35.601 N	105° 43.138 W	9,600
Helibase	H-330	Type 2 and Type 3. Possible Helicopter on private land. Appears to be set up for private heliport. Wind sock in place, large moved and flat field. No obvious hazards	40° 41.830 N	105° 35.961 W	7,225	Unimproved Landing Area		Sling for spike camps	40° 35.601 N	105° 43.138 W	9,600
Helibase	H-390	Approved for Type 3 or Type 2	40° 34.845 N	105° 36.138 W	9,100	Unimproved Landing Area		Sling for spike camps	40° 35.601 N	105° 43.138 W	9,600
Helibase	H-510	Approved for Type 3 only - use for backing up OH for recon missions on the fire.	40° 34.877 N	105° 51.067 W	9,440	Unimproved Landing Area		Sling for spike camps	40° 35.601 N	105° 43.138 W	9,600
Helibase	H-600	Type 2 and Type 3	40° 32.220 N	105° 53.560 W	10,400	Unimproved Landing Area		Sling for spike camps	40° 35.601 N	105° 43.138 W	9,600

SEdel  
9/5/2020 1944  
North American 1983 Datum  
Lat/Long Grid