
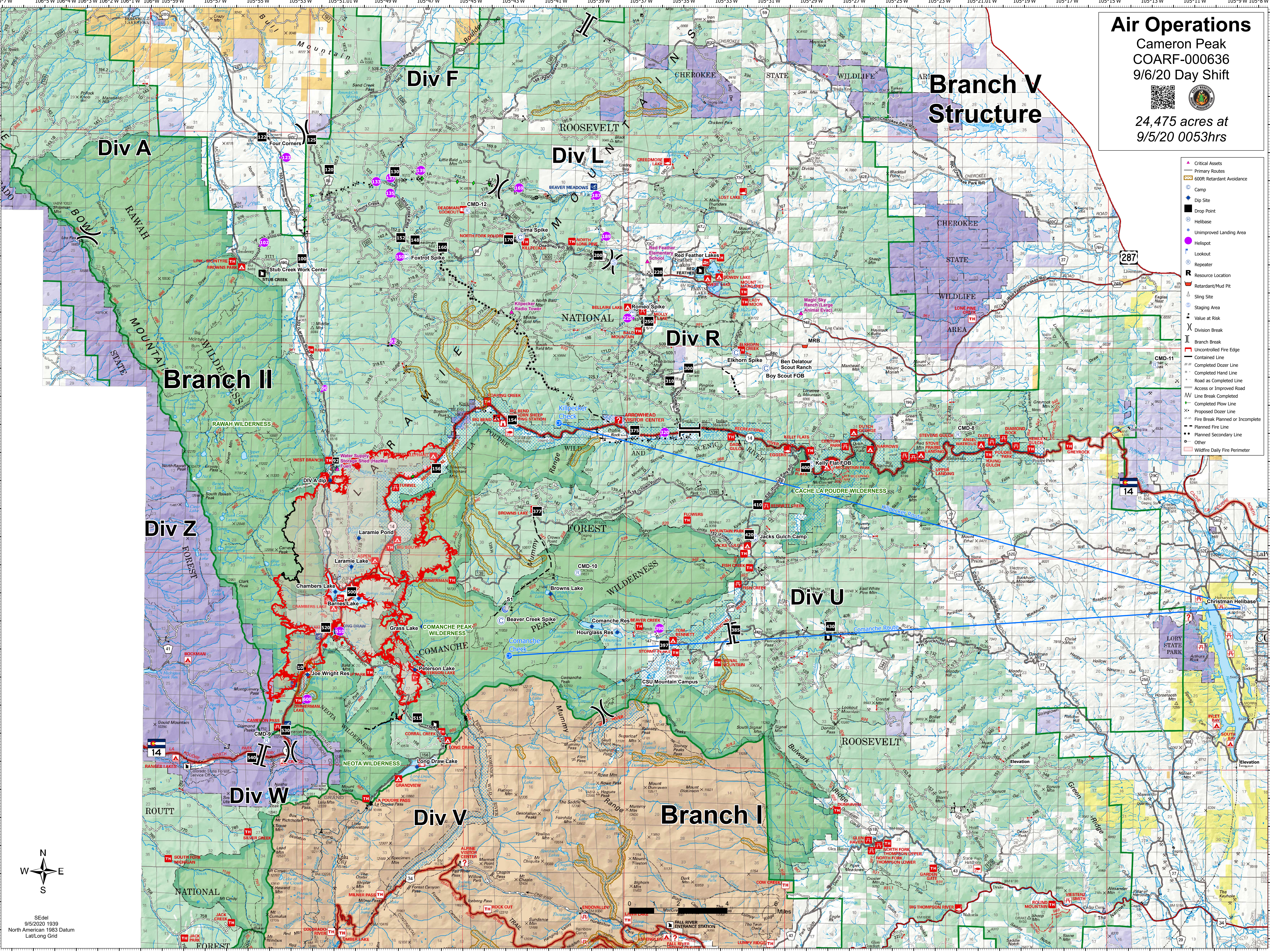


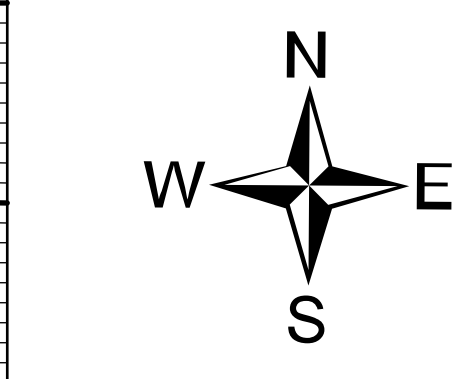
**Air Operations**  
 Cameron Peak  
 COARF-000636  
 9/6/20 Day Shift

24,475 acres at  
 9/5/20 0053hrs



- ▲ Critical Assets
- Primary Routes
- 600ft Retardant Avoidance
- Camp
- ◆ Dip Site
- Drop Point
- Helibase
- Unimproved Landing Area
- Lookout
- Repeater
- Resource Location
- Retardant/Mud Pit
- Slings Site
- Staging Area
- Value at Risk
- || Division Break
- || Branch Break
- Uncontrolled Fire Edge
- Contained Line
- Completed Dozer Line
- Completed Hand Line
- Road as Completed Line
- Access or Improved Road
- Line Break Completed
- Completed Flow Line
- Proposed Dozer Line
- Fire Break Planned or Incomplete
- Planned Fire Line
- Planned Secondary Line
- Other
- Wildfire Daily Fire Perimeter



SEdel  
 9/5/2020 1939  
 North American 1983 Datum  
 Lat/Long Grid

40°59'N  
40°58'N  
40°57'N  
40°56'N  
40°55'N  
40°54'N  
40°53'N  
40°52'N  
40°51'N  
40°50'N  
40°49'N  
40°48'N  
40°47'N  
40°46'N  
40°45'N  
40°44'N  
40°43'N  
40°42'N  
40°41'N  
40°40'N  
40°39'N  
40°38'N  
40°37'N  
40°36'N  
40°35'N  
40°34'N  
40°33'N  
40°32'N  
40°31'N  
40°30'N  
40°29'N  
40°28'N  
40°27'N  
40°26'N  
40°25'N

106°5'W  
106°4'W  
106°3'W  
106°2'W  
106°1'W  
106°W  
105°59'W  
105°57'W  
105°55'W  
105°53'W  
105°51.01'W  
105°49'W  
105°47'W  
105°45'W  
105°43'W  
105°41'W  
105°39'W  
105°37'W  
105°35'W  
105°33'W  
105°31'W  
105°29'W  
105°27'W  
105°25'W  
105°23'W  
105°21.01'W  
105°19'W  
105°17'W  
105°15'W  
105°13'W  
105°11'W  
105°9'W  
105°8'W