

**Pilot Map**  
Cameron Peak  
COARF 000636  
9/6/20 Day Shift

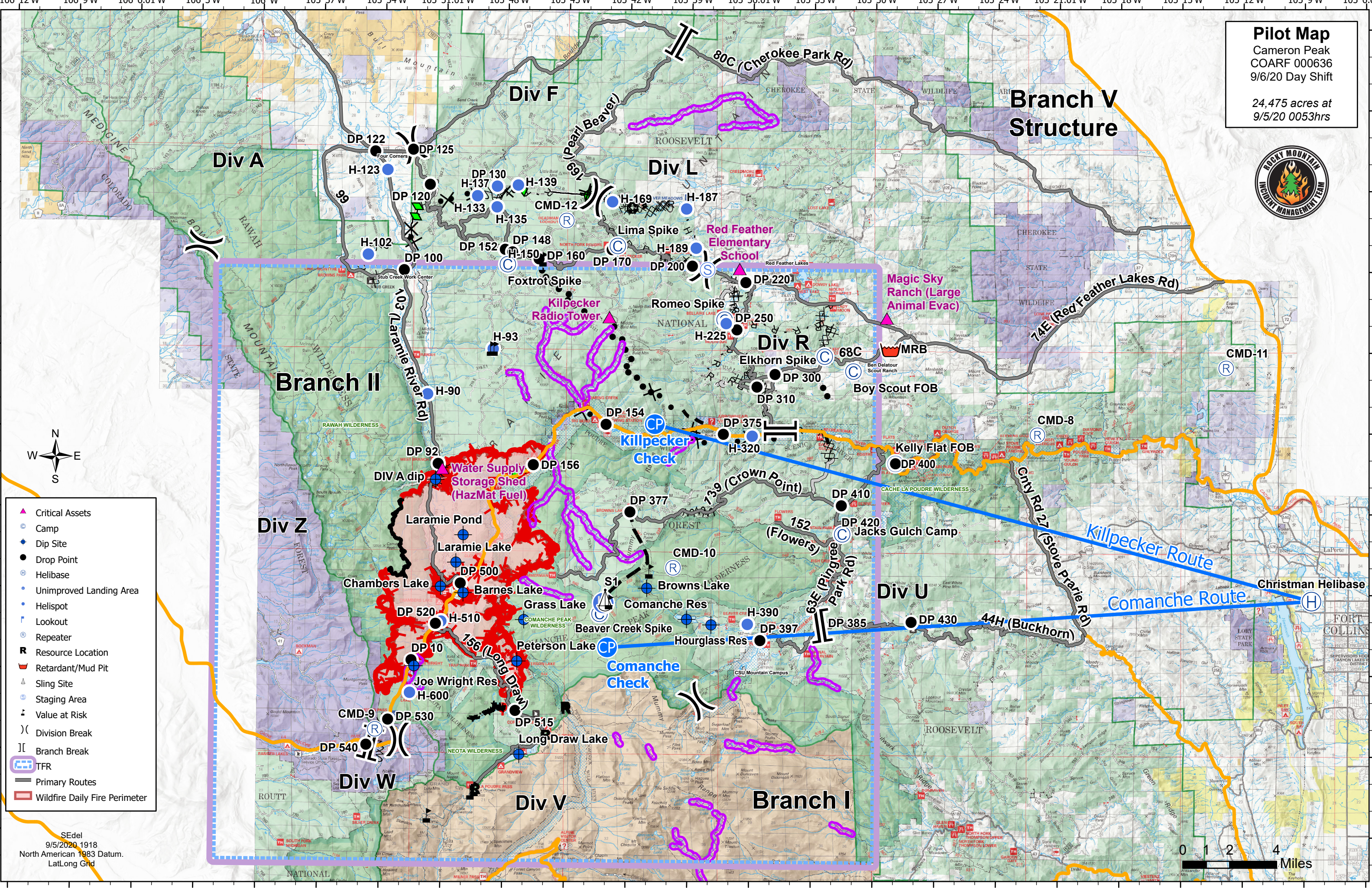
24,475 acres at  
9/5/20 0053hrs



- ▲ Critical Assets
- ⊙ Camp
- ◆ Dip Site
- Drop Point
- ⊕ Helibase
- Unimproved Landing Area
- Helispot
- ⌚ Lookout
- ⊙ Repeater
- R Resource Location
- 🚒 Retardant/Mud Pit
- ⚙ Sling Site
- ⊙ Staging Area
- ⚠ Value at Risk
- ) Division Break
- || Branch Break
- 🚚 TFR
- Primary Routes
- 🔥 Wildfire Daily Fire Perimeter

SEdel  
9/5/2020 1918  
North American 1983 Datum.  
LatLong Grid

0 1 2 4 Miles



FeatureCategory	Label	Comments	LatWGS84_DDM	LongWGS84_DDM	Elevation
Dip Site	<b>Barnes Lake</b>		40° 35.940' N	105° 50.000' W	9,100
Dip Site	<b>Browns Lake</b>		40° 36.160' N	105° 41.050' W	10,500
Dip Site	<b>Chambers Lake</b>		40° 36.170' N	105° 51.100' W	9,150
Dip Site	<b>Comanche Res</b>		40° 35.015' N	105° 39.101' W	9,400
Dip Site	<b>DIV A dip</b>		40° 40.137' N	105° 51.387' W	8,600
Dip Site	<b>Grass Lake</b>	small pond	40° 34.960' N	105° 47.030' W	9,900
Dip Site	<b>Hourglass Res</b>		40° 34.816' N	105° 37.908' W	9,400
Dip Site	<b>Joe Wright Res</b>		40° 33.210' N	105° 52.360' W	9,920
Dip Site	<b>Laramie Lake</b>		40° 37.070' N	105° 50.360' W	9,400
Dip Site	<b>Laramie Pond</b>	small pond	40° 38.090' N	105° 50.020' W	9,500
Dip Site	<b>Long Draw Lake</b>		40° 29.960' N	105° 47.210' W	10,100
Dip Site	<b>Peterson Lake</b>		40° 33.420' N	105° 47.350' W	9,500
Helibase	<b>Christman Helibase</b>		40° 35.780' N	105° 08.660' W	5,150
Helispot	<b>H-102</b>	Type 2	40° 48.470' N	105° 54.781' W	8,400
Helispot	<b>H-123</b>	Type 3	40° 51.235' N	105° 53.000' W	8,350
Helispot	<b>H-133</b>	Type 2 and Type 3	40° 50.677' N	105° 49.465' W	10,100
Helispot	<b>H-135</b>	Type 2	40° 50.670' N	105° 49.371' W	10,070
Helispot	<b>H-137</b>	Approved for Type 2 and Type 3	40° 51.039' N	105° 48.501' W	10,076
Helispot	<b>H-139</b>	Approved for Type 2 or Type 3	40° 51.088' N	105° 47.477' W	10,250
Helispot	<b>H-150</b>	Recon pickup site on the North side. Approved Type 2, Could fit a Type 1 or multiple aircraft for PSD ops.	40° 48.081' N	105° 47.951' W	9,900
Helispot	<b>H-169</b>	Approved for T-2 or T-3 Helicopter. Trees at NE corner	40° 50.496' N	105° 42.865' W	9,500
Helispot	<b>H-187</b>		40° 50.250' N	105° 39.240' W	8,600
Helispot	<b>H-189</b>	May need minor improvement	40° 48.797' N	105° 38.757' W	8,740
Helispot	<b>H-225</b>	Type 3 only	40° 46.006' N	105° 37.267' W	8,700
Helispot	<b>H-320</b>	Type 2 and Type 3. Possible Helispot on private land. Appears to be set up for private helicopter. Wind sock in place, large mowed and flat field. No obvious hazards	40° 41.830' N	105° 35.961' W	7,225
Helispot	<b>H-390</b>	Approved for Type 3 or Type 2	40° 34.845' N	105° 36.138' W	9,100
Helispot	<b>H-510</b>	Approved for Type 3 only- use for picking up OH for recon missions on the fire.	40° 34.877' N	105° 51.067' W	9,440
Helispot	<b>H-600</b>	Type 2 and Type 3	40° 32.220' N	105° 52.560' W	10,400
Helispot	<b>H-90</b>	Helispot along 103rd in Div A. Approved Type 2.	40° 43.307' N	105° 51.819' W	8,400
Helispot	<b>H-93</b>	Approved for Type 2	40° 45.003' N	105° 48.638' W	9,670
Lookout		Deadman Lookout Tower	40° 49.808' N	105° 45.107' W	10,700
Mobile Weather Unit	<b>IRAWS 28</b>	CSU Campus	40° 34.080' N	105° 35.340' W	9,020
Mobile Weather Unit	<b>IRAWS 29</b>	Cameron Pass	40° 31.140' N	105° 53.520' W	10,250
Mobile Weather Unit	<b>IRAWS 32</b>	W Branch Trail... Tx 163.350 code 0032#	40° 40.740' N	105° 51.240' W	8,600
Mobile Weather Unit	<b>IRAWS 35</b>	Chambers Lake	40° 36.000' N	105° 51.060' W	9,200
Repeater	<b>CMD-10</b>	Crown Point Repeater	40° 36.925' N	105° 39.777' W	11,600
Repeater	<b>CMD-11</b>	Bonner Peak Repeater	40° 44.431' N	105° 12.841' W	6,800
Repeater	<b>CMD-12</b>	Deadman Repeater	40° 49.789' N	105° 45.095' W	10,700
Repeater	<b>CMD-8</b>		40° 41.925' N	105° 22.043' W	7,300
Repeater	<b>CMD-9</b>		40° 30.851' N	105° 54.231' W	11,600
Resource Location		Fish Study Project Tag Collection Equipment	40° 31.666' N	105° 44.939' W	9,600
Resource Location		Fish Study Project Tag Collection Equipment	40° 31.745' N	105° 44.971' W	9,600
Resource Location		Data shack (wrapped)	40° 28.649' N	105° 49.325' W	
Resource Location		Snow tell (wrapped)	40° 30.691' N	105° 45.918' W	
Retardant/Mud Pit	<b>MRB</b>	Mobile Retardant Base	40° 45.061' N	105° 29.229' W	
Sling Site	<b>S1</b>	sling for spike camps	40° 35.711' N	105° 43.080' W	
Unimproved Landing Area		wide open medivac/ helispot for Div U spike camp	40° 35.601' N	105° 43.158' W	
Value at Risk		Historic Cabins	40° 45.009' N	105° 48.554' W	9,700
Value at Risk		Historic Cabins	40° 45.008' N	105° 48.723' W	9,700
Value at Risk		SNOTEL weather station	40° 48.343' N	105° 46.203' W	10,240
Value at Risk		Ditch Cabin	40° 27.658' N	105° 51.638' W	10,200
Value at Risk		Cabin	40° 28.654' N	105° 49.338' W	10,200
Value at Risk		Cabin #3 (3 structures wrapped, plumbed, sprinklers)	40° 28.530' N	105° 49.531' W	
Value at Risk		cabin remains	40° 35.630' N	105° 42.861' W	
Value at Risk		cabin remains	40° 36.792' N	105° 40.911' W	