


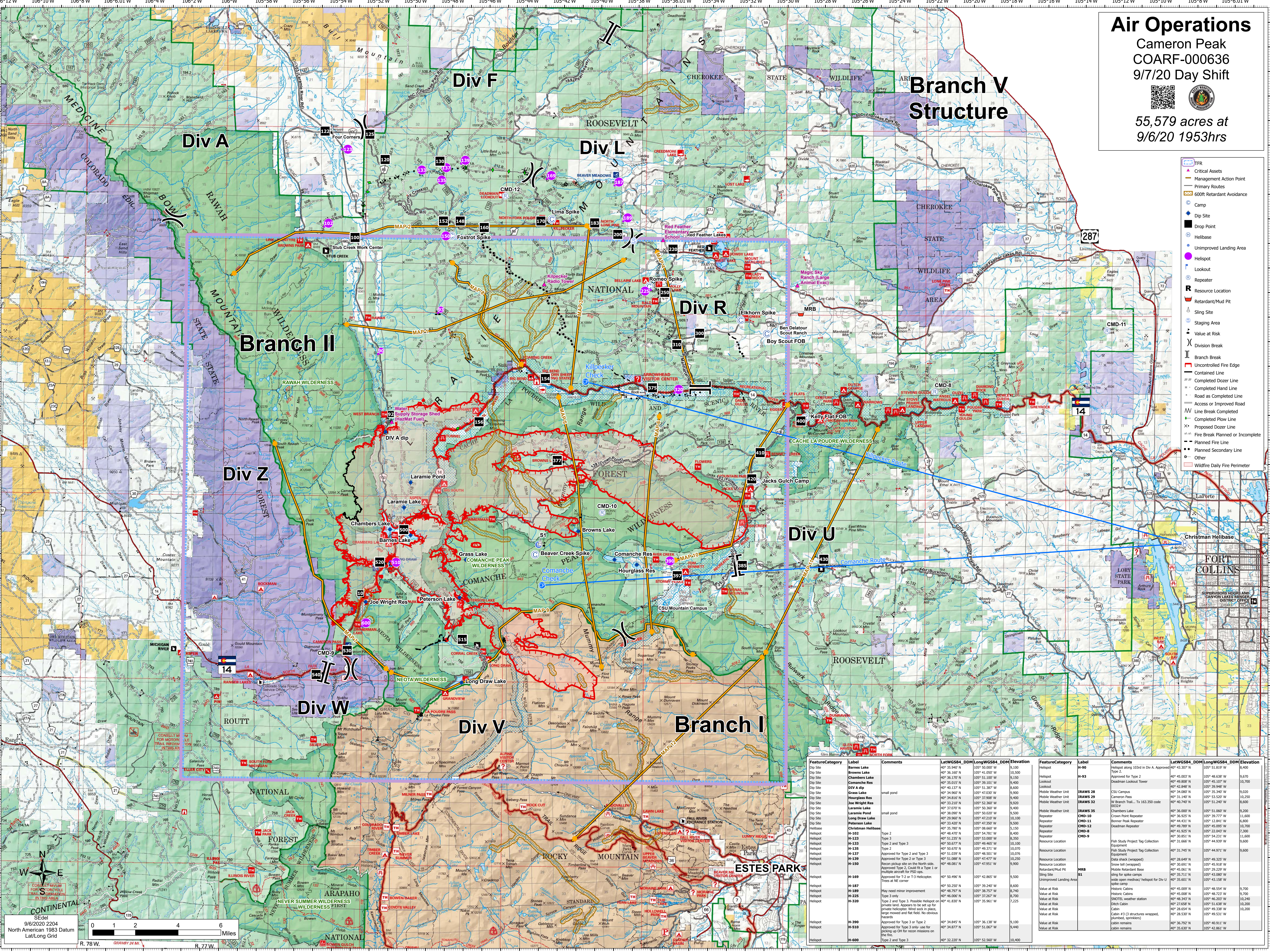
Air Operations

Cameron Peak
COARF-000636
9/7/20 Day Shift



55,579 acres at
9/6/20 1953hrs

Branch V Structure



- TFR
- Critical Assets
- Management Action Point
- Primary Routes
- 600ft Retardant Avoidance
- Camp
- Dip Site
- Drop Point
- Helibase
- Unimproved Landing Area
- Lookout
- Repeater
- Resource Location
- Retardant/Mud Pit
- Sling Site
- Staging Area
- Value at Risk
- Division Break
- Branch Break
- Uncontrolled Fire Edge
- Contained Line
- Completed Dozer Line
- Completed Hand Line
- Road as Completed Line
- Access or Improved Road
- Line Break Completed
- Completed Flow Line
- Proposed Dozer Line
- Fire Break Planned or Incomplete
- Planned Fire Line
- Planned Secondary Line
- Other
- Wildfire Daily Fire Perimeter

FeatureCategory	Label	Comments	LatWGS84_DDM	LongWGS84_DDM	Elevation	FeatureCategory	Label	Comments	LatWGS84_DDM	LongWGS84_DDM	Elevation
Helicopter	Barnes Lake		40° 35.947' N	105° 50.000' W	9,100	Helicopter	H-90	Helicopter along 103rd in Div A. Approved	40° 43.307' N	105° 51.819' W	8,400
Dip Site	Chambers Lake		40° 36.170' N	105° 51.300' W	9,150	Helicopter	H-93	Approved for Type 2	40° 45.003' N	105° 48.638' W	9,670
Dip Site	Comanche Res		40° 35.015' N	105° 39.101' W	9,400	Lookout	IRAWS 29	Deadman Lookout Tower	40° 49.808' N	105° 45.207' W	10,700
Dip Site	Grass Lake	small pond	40° 34.967' N	105° 47.030' W	9,900	Lookout	IRAWS 32	Deadman Lookout	40° 42.848' N	105° 38.948' W	9,020
Dip Site	Hourglass Res		40° 34.816' N	105° 37.908' W	9,400	Mobile Weather Unit	IRAWS 28	Camron Pass	40° 34.080' N	105° 35.340' W	10,250
Dip Site	Joe Wright Res		40° 33.210' N	105° 51.267' W	8,600	Mobile Weather Unit	IRAWS 32	Mobile Weather Unit	40° 31.147' N	105° 53.520' W	8,600
Dip Site	Laramie Pond	small pond	40° 37.070' N	105° 50.360' W	9,400	Mobile Weather Unit	IRAWS 35	Chambers Lake	40° 36.000' N	105° 51.060' W	9,200
Dip Site	Long Draw Lake		40° 38.090' N	105° 50.020' W	9,500	Repeater	CMD-10	Crown Peak Repeater	40° 36.002' N	105° 39.777' W	11,600
Dip Site	Poterson Lake		40° 29.960' N	105° 47.210' W	10,100	Repeater	CMD-11	Bonner Peak Repeater	40° 44.431' N	105° 12.841' W	6,800
Helibase	Christian Helibase		40° 13.235' N	105° 08.660' W	5,150	Repeater	CMD-12	Deadman Repeater	40° 49.789' N	105° 45.095' W	7,200
Helicopter	H-102	Type 2	40° 48.470' N	105° 54.781' W	8,400	Repeater	CMD-9	Deadman Repeater	40° 30.851' N	105° 54.231' W	11,600
Helicopter	H-123	Type 3	40° 51.235' N	105° 53.000' W	8,750	Resource Location	MRB	Fire Break Planned or Incomplete	40° 31.666' N	105° 44.939' W	9,600
Helicopter	H-133	Type 2 and Type 3	40° 50.677' N	105° 49.465' W	10,100	Resource Location	S1	Unimproved Landing Area	40° 31.745' N	105° 44.971' W	9,600
Helicopter	H-135	Type 2	40° 50.670' N	105° 49.371' W	10,070	Resource Location	IRAWS 32	Chambers Lake	40° 36.002' N	105° 39.777' W	11,600
Helicopter	H-137	Approved for Type 2 and Type 3	40° 51.039' N	105° 47.201' W	10,076	Resource Location	IRAWS 32	Chambers Lake	40° 36.002' N	105° 39.777' W	11,600
Helicopter	H-139	Approved for Type 2 or Type 3	40° 51.088' N	105° 47.477' W	10,250	Resource Location	IRAWS 32	Chambers Lake	40° 36.002' N	105° 39.777' W	11,600
Helicopter	H-150	Recon pickup site on the North side. Approved Type 2. Could fit a Type 1 or multiple aircraft for PSD ops.	40° 48.081' N	105° 47.951' W	9,900	Resource Location	IRAWS 32	Chambers Lake	40° 36.002' N	105° 39.777' W	11,600
Helicopter	H-167	Approved for T-2 or T-3 Helicopters. Three at NE corner.	40° 50.996' N	105° 42.865' W	9,500	Resource Location	IRAWS 32	Chambers Lake	40° 36.002' N	105° 39.777' W	11,600
Helicopter	H-189	May need minor improvement	40° 48.797' N	105° 38.257' W	8,740	Resource Location	IRAWS 32	Chambers Lake	40° 36.002' N	105° 39.777' W	11,600
Helicopter	H-227	Type 3 only	40° 46.026' N	105° 37.617' W	8,700	Resource Location	IRAWS 32	Chambers Lake	40° 36.002' N	105° 39.777' W	11,600
Helicopter	H-300	Type 2 and Type 3. Possible Helicopter on private land. Appears to be set up for private helicopter. Wind sock in place. Large moved and flat field. No obvious hazards.	40° 41.830' N	105° 35.961' W	7,225	Resource Location	IRAWS 32	Chambers Lake	40° 36.002' N	105° 39.777' W	11,600
Helicopter	H-390	Approved for Type 3 or Type 2	40° 34.845' N	105° 36.138' W	9,100	Resource Location	IRAWS 32	Chambers Lake	40° 36.002' N	105° 39.777' W	11,600
Helicopter	H-510	Approved for Type 3 only. Use for backing up OH for recon missions on the fire.	40° 34.877' N	105° 51.067' W	9,440	Resource Location	IRAWS 32	Chambers Lake	40° 36.002' N	105° 39.777' W	11,600
Helicopter	H-600	Type 2 and Type 3	40° 32.220' N	105° 52.560' W	10,400	Resource Location	IRAWS 32	Chambers Lake	40° 36.002' N	105° 39.777' W	11,600

SEGL
9/6/2020 2204
North American 1983 Datum
Lat/Long Grid

