

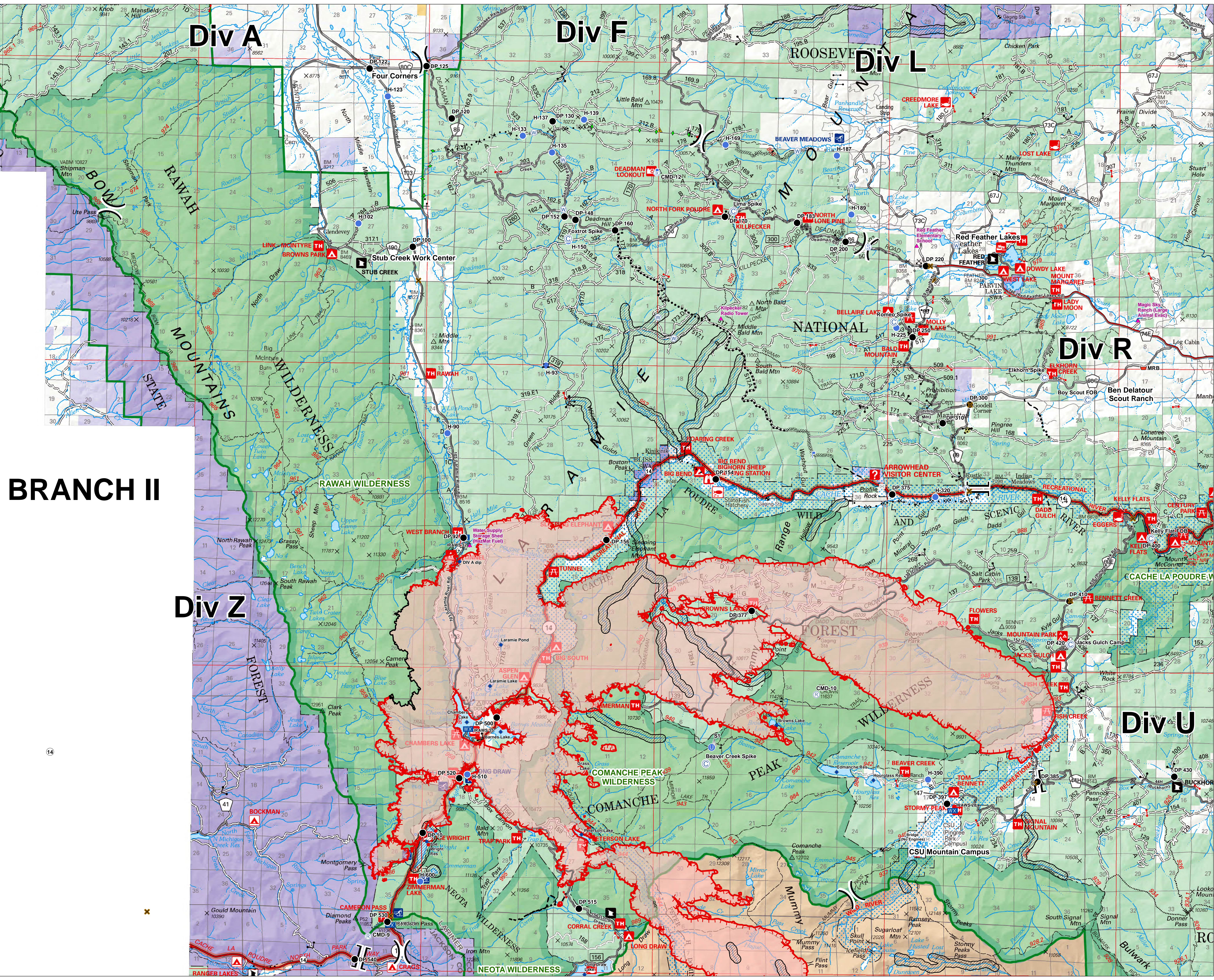
**BRANCH II**  
Cameron Peak  
CO-ARF-636  
7-Sep-2020

Appx 59,051 ac  
at 7-Sep 00:27



0 1  
Miles

- Bridge
- Camp
- Closure
- Dip Site
- Drop Point
- Fire Station
- Gate
- Hazard
- Unimproved Landing Area
- Helipoint
- Lookout
- Mobile Weather Unit
- Repeater
- Fish Study Equipment
- Retardant/Mat Pz
- Safety Zone
- Sling Site
- Staging Area
- Water Source
- Water Development or Draft Site
- Value at Risk
- Division Break
- Branch Break
- Uncontrolled Fire Edge
- Controlled Line
- Completed Dozer Line
- Completed Hand Line
- Road as Completed Line
- Access or Improved Road
- Line Break Completed
- Completed Pile Line
- Proposed Dozer Line
- Fire Break Planned or Incomplete
- Planned Fire Line
- Planned Secondary Line
- Fire Area
- Critical Assets
- Primary Routes
- 600ft Resistant Avoidance



**BRANCH II**

**Div Z**

**Div U**