

# IAP Index

09/07/2020

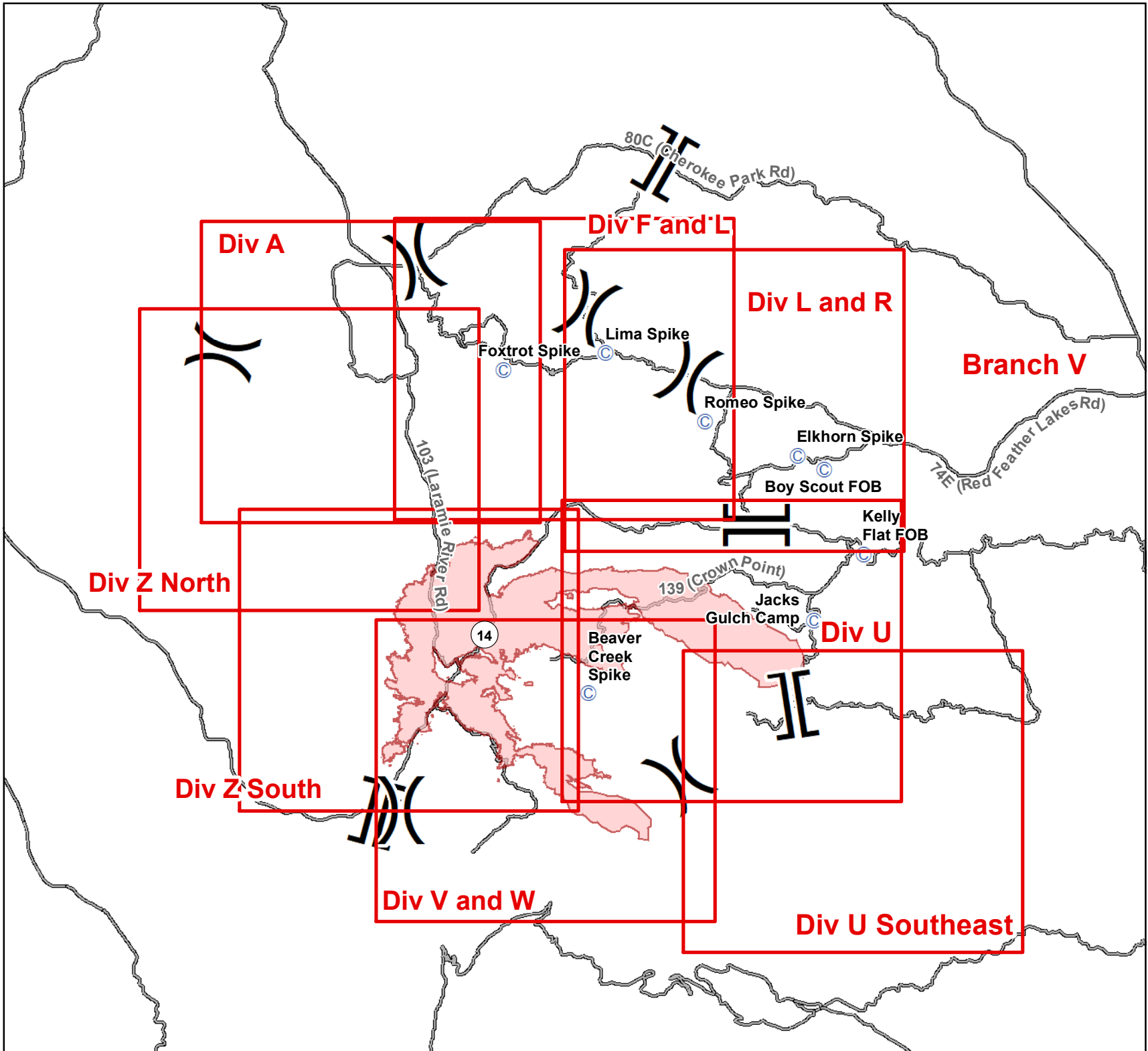
**Cameron Peak**  
CO-ARF 000636

55,579 Acres  
as of 1935 09/06



0 1.75 3.5 7 Miles

- Page Indicator
- Camp
- Division Break
- Branch Break
- Fire Perimeter
- Closure Area
- Major Roads



**IAP**  
 09/07/2020  
**Cameron Peak**  
 CO-ARF 000636  
 55,579 Acres  
 as of 1935 09/06

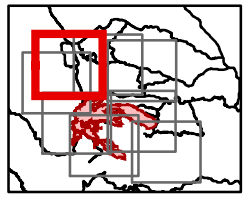
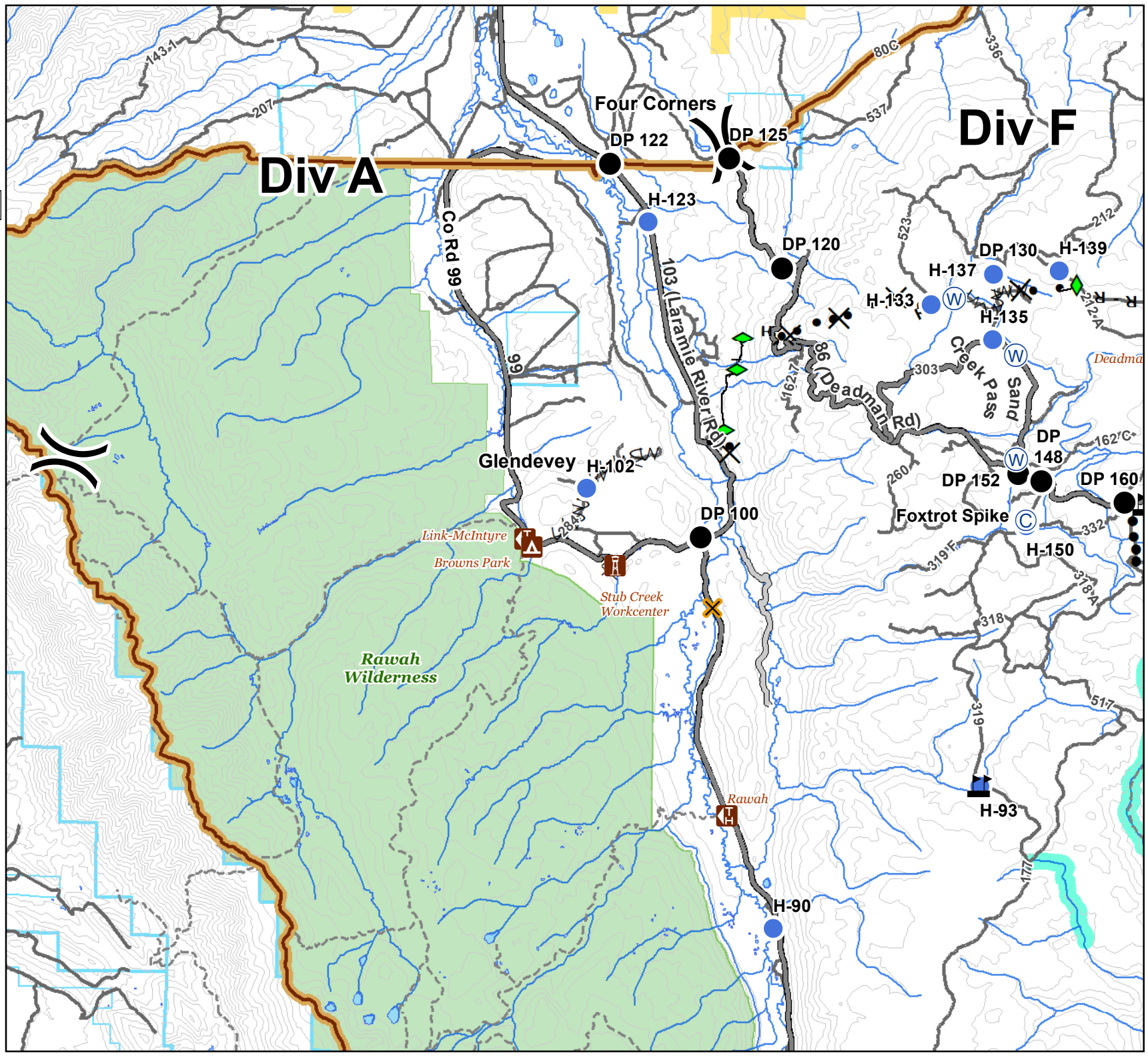


0 0.250.5 1  
 Miles

E. Vekri  
 Acres from IR  
 9/6/2020 2:08  
 UTM NAD 83 Z13N

**Div A**  
**Branch II**

- Campground
- Other Recreation Site
- Trailhead
- Camp
- Closure
- Drop Point
- Helispot
- Water Source
- Value at Risk
- Division Break
- Completed Dozer Line
- Completed Hand Line
- Road as Completed Line
- Access or Improved Road
- Completed Plow Line
- Proposed Dozer Line
- Fire Break Planned or Incomplete
- Planned Secondary Line
- Closure Area
- County Road
- Other Road
- Trail
- 600ft Retardant Avoidance Waterways
- Wilderness Areas
- Forest Service
- State



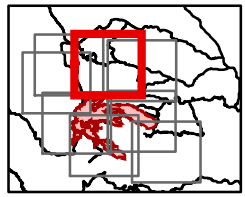
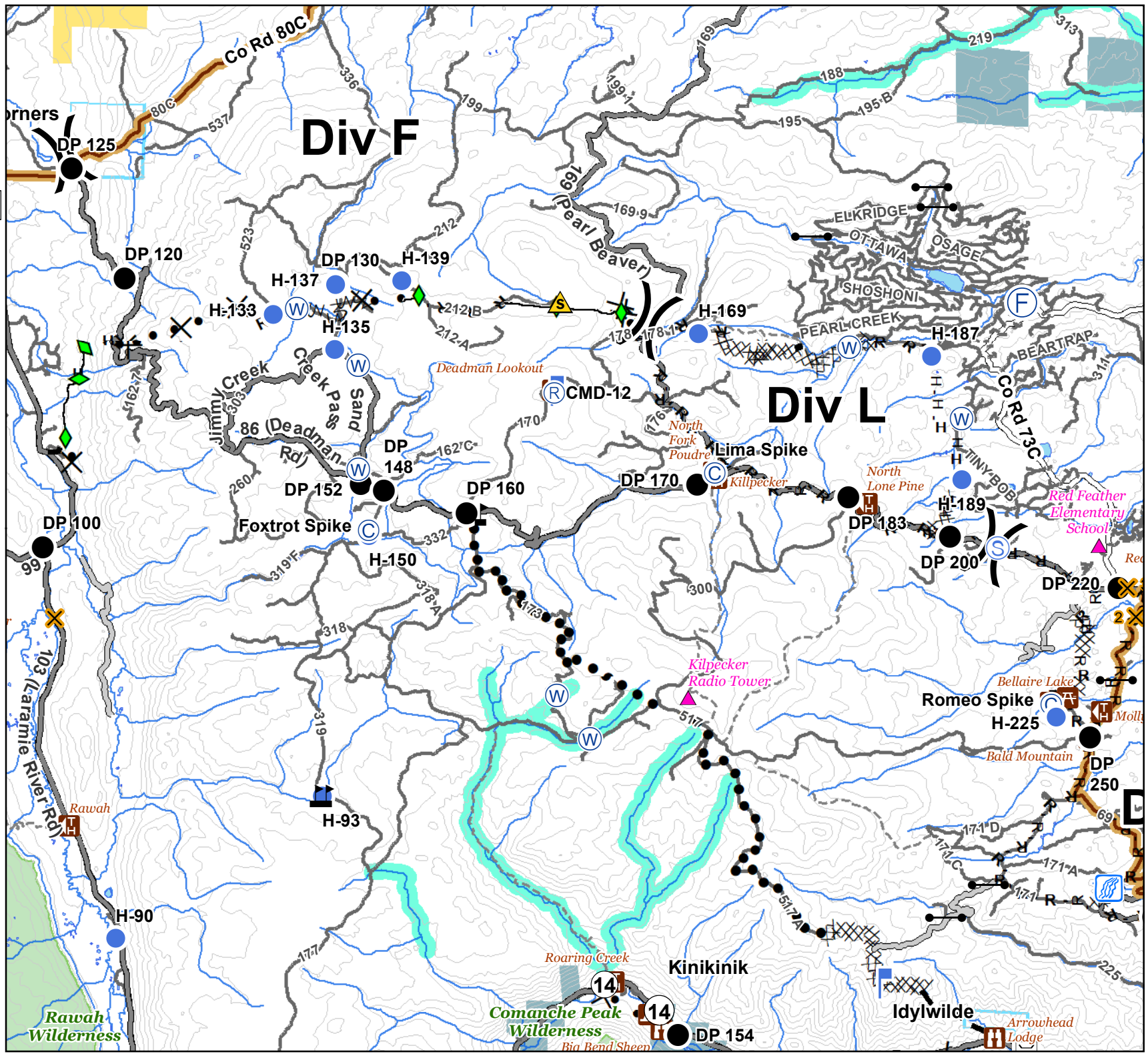
**IAP**  
 09/07/2020  
**Cameron Peak**  
 CO-ARF 000636  
 55,579 Acres  
 as of 1935 09/06



E. NAD83  
 Acres from IR  
 9/20/2020 2:08  
 UTM NAD 83 Z13N

**Div F and L**  
**Branch II**

- Critical Assets
- Campground
- Day Use Area
- Picnic Site
- Other Recreation Site
- Trailhead
- Bridge
- Camp
- Closure
- Drop Point
- Fire Station
- Gate
- Helispot
- Lookout
- Repeater
- Safety Zone
- Staging Area
- Stream Crossing
- Water Source
- Value at Risk
- Division Break
- Completed Dozer Line
- Completed Hand Line
- Road as Completed Line
- Access or Improved Road
- Line Break Completed
- Completed Plow Line
- Proposed Dozer Line
- Fire Break Planned or Incomplete
- Planned Fire Line
- Planned Secondary Line
- Closure Area
- Primary Route
- County Road
- Other Road
- Trail
- 600ft Retardant Avoidance Waterways
- Wilderness Areas
- Forest Service
- State

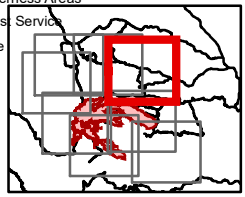
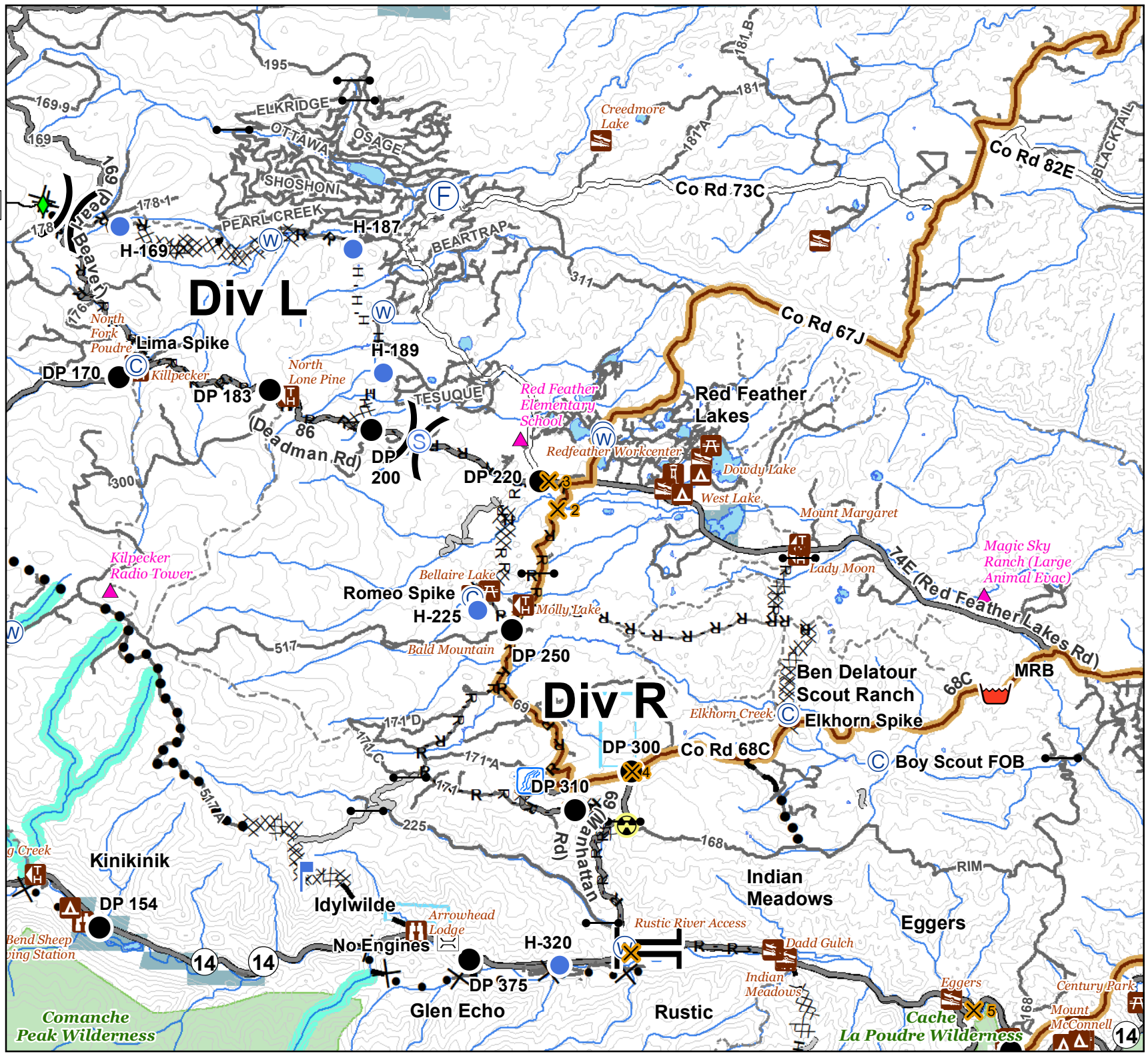


**IAP**  
 09/07/2020  
**Cameron Peak**  
 CO-ARF 000636  
 55,579 Acres  
 as of 1935 09/06



E. NAD 83  
 UTM NAD 83 Z13N

- Critical Assets
- Water Access
- Campground
- Day Use Area
- Picnic Site
- Other Recreation Site
- Trailhead
- Bridge
- Camp
- Closure
- Drop Point
- Fire Station
- Gate
- Hazard
- Helispot
- Lookout
- Retardant/Mud Pit
- Safety Zone
- Staging Area
- Stream Crossing
- Water Source
- Division Break
- Branch Break
- Completed Dozer Line
- Completed Hand Line
- Road as Completed Line
- Access or Improved Road
- Line Break Completed
- Completed Plow Line
- Proposed Dozer Line
- Planned Fire Line
- Planned Secondary Line
- Closure Area
- Primary Route
- County Road
- Other Road
- Trail
- 600ft Retardant Avoidance Waterways
- Wilderness Areas
- Forest Service
- State



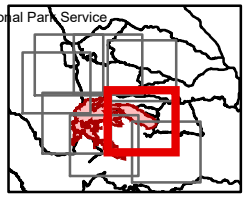
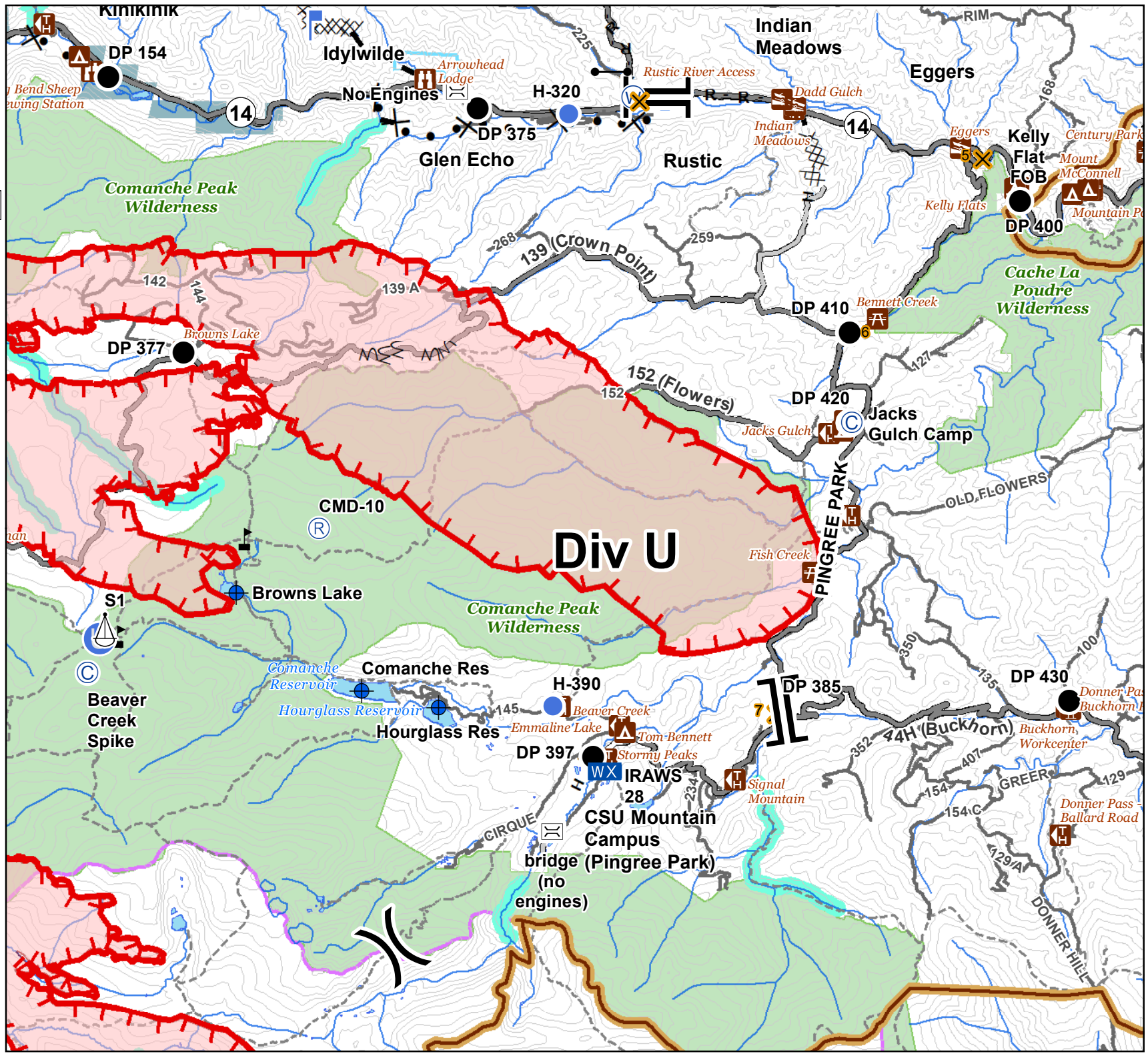
**IAP**  
 09/07/2020  
**Cameron Peak**  
 CO-ARF 000636  
 55,579 Acres  
 as of 1935 09/06



E. Vekari  
 Acres from IR  
 9/6/2020 2:27  
 UTM NAD 83 Z13N

**Div U**  
**Branch I**

- Water Access
- Campground
- Day Use Area
- Picnic Site
- Other Recreation Site
- Trailhead
- Bridge
- Camp
- Closure
- Dip Site
- Drop Point
- Gate
- Unimproved Landing Area
- Helispot
- Lookout
- Mobile Weather Unit
- Repeater
- Sling Site
- Water Source
- Value at Risk
- Division Break
- Branch Break
- Uncontrolled Fire Edge
- Completed Hand Line
- Road as Completed Line
- Access or Improved Road
- Proposed Dozer Line
- Planned Fire Line
- Fire Perimeter
- Closure Area
- Primary Route
- County Road
- Arterial or Collector Road
- Other Road
- Trail
- 600ft Retardant Avoidance Waterways
- Wilderness Areas
- Forest Service
- State
- National Park Service



# IAP

09/07/2020

## Cameron Peak

CO-ARF 000636

55,579 Acres

as of 1935 09/06



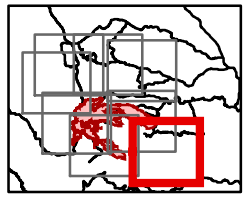
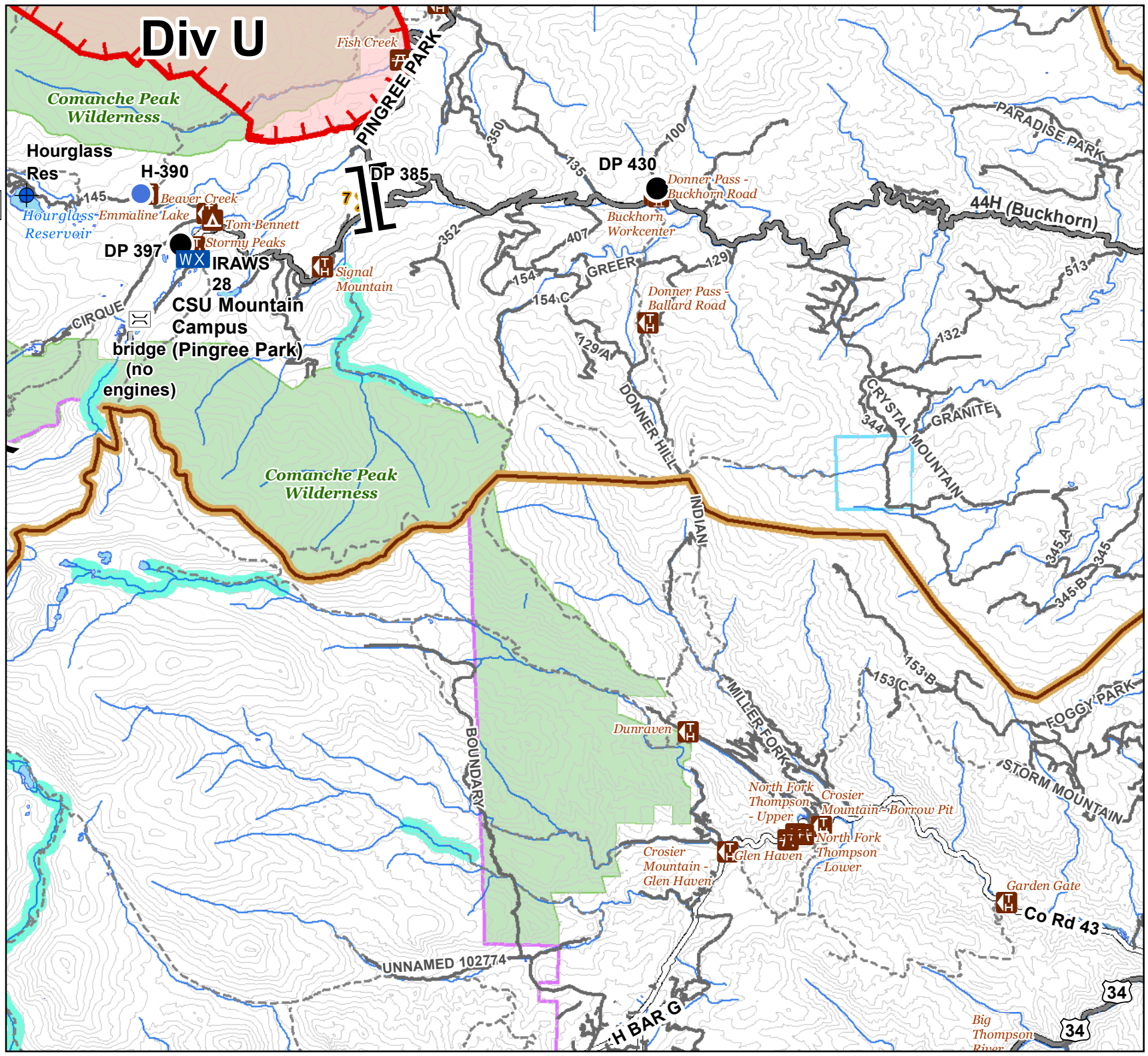
0 0.250.5 1  
Miles

E. Vokri  
Acres from IR  
9/6/2020 2:27  
UTM NAD 83 Z13A

### Div U Southeast Branch I

- Campground
- Picnic Site
- Other Recreation Site
- Trailhead
- Bridge
- Closure
- Dip Site
- Drop Point
- Helispot
- Mobile Weather Unit
- Division Break
- Branch Break

- Uncontrolled Fire Edge
- Completed Hand Line
- Access or Improved Road
- Fire Perimeter
- Closure Area
- Primary Route
- County Road
- Other Road
- Trail
- 600ft Retardant Avoidance Waterways
- Wilderness Areas
- Forest Service
- State
- National Park Service



# IAP

09/07/2020

## Cameron Peak

CO-ARF 000636

55,579 Acres

as of 1935 09/06

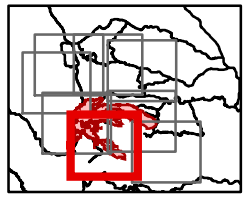
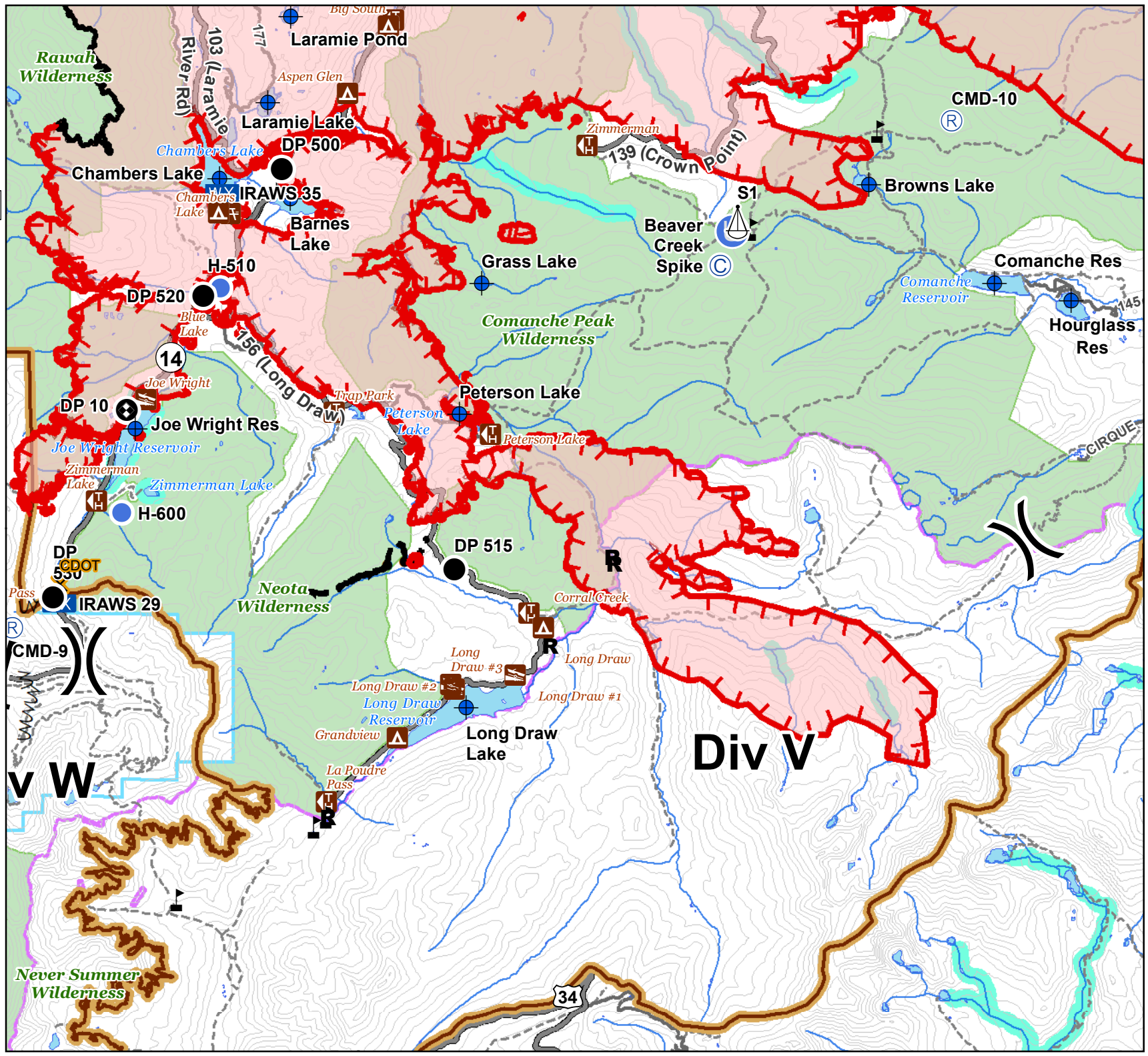
## Div V and W

### Branch I



E. NAD83  
Acres from IR  
9/6/2020 2:28  
UTM NAD 83 Z13N

- Water Access
- Campground
- Picnic Site
- Trailhead
- Verizon COW
- Bridge
- Camp
- Closure
- Dip Site
- Drop Point
- Unimproved Landing Area
- Helispot
- Mobile Weather Unit
- Repeater
- Fish Study Equipment
- Sling Site
- Value at Risk
- Division Break
- Branch Break
- Uncontrolled Fire Edge
- Contained Line
- Fire Break Planned or Incomplete
- Planned Fire Line
- Planned Secondary Line
- Fire Perimeter
- Closure Area
- Primary Route
- County Road
- Other Road
- Trail
- 600ft Retardant Avoidance Waterways
- Wilderness Areas
- Forest Service
- State
- National Park Service



# IAP

09/07/2020

## Cameron Peak

CO-ARF 000636

55,579 Acres

as of 1935 09/06

### Div Z South

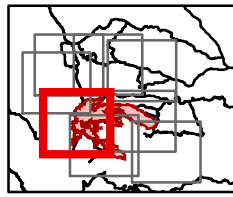
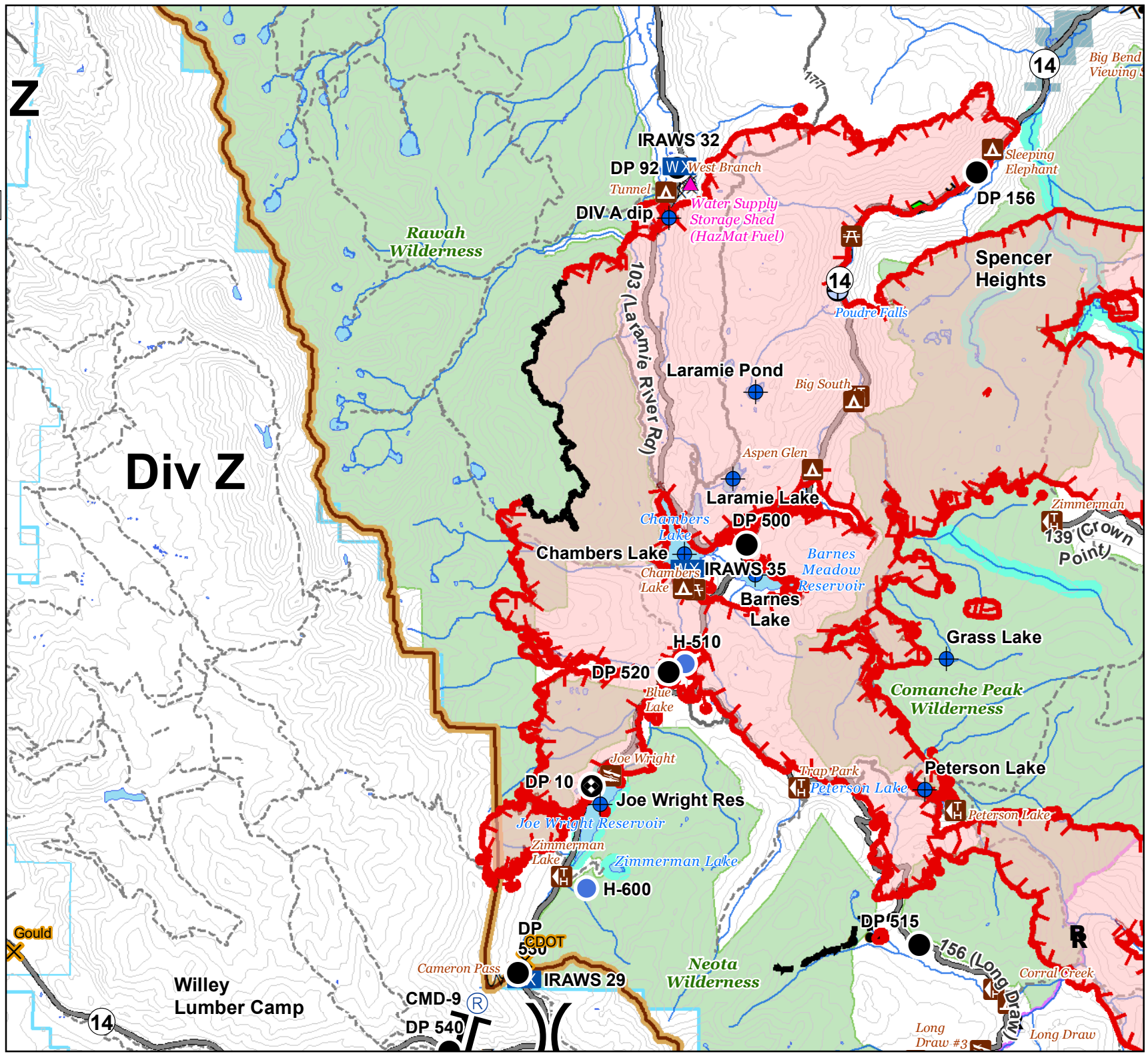
### Branch II



0 0.250.5 1  
Miles

E. Vekri  
Acres from IR  
9/6/2020 2:28  
UTM NAD 83 Z13N

- Critical Assets
- Water Access
- Campground
- Picnic Site
- Trailhead
- Verizon COW
- Closure
- Dip Site
- Drop Point
- Helispot
- Mobile Weather Unit
- Repeater
- Fish Study Equipment
- Draft Site
- Division Break
- Branch Break
- Uncontrolled Fire Edge
- Contained Line
- Completed Dozer Line
- Completed Hand Line
- Road as Completed Line
- Completed Plow Line
- Fire Break Planned or Incomplete
- Planned Fire Line
- Planned Secondary Line
- Fire Perimeter
- Closure Area
- Primary Route
- County Road
- Other Road
- Trail
- 600ft Retardant Avoidance Waterways
- Wilderness Areas
- Forest Service
- State
- National Park Service





# IAP

09/07/2020

## Cameron Peak

CO-ARF 000636

55,579 Acres

as of 1935 09/06

### Div Z North

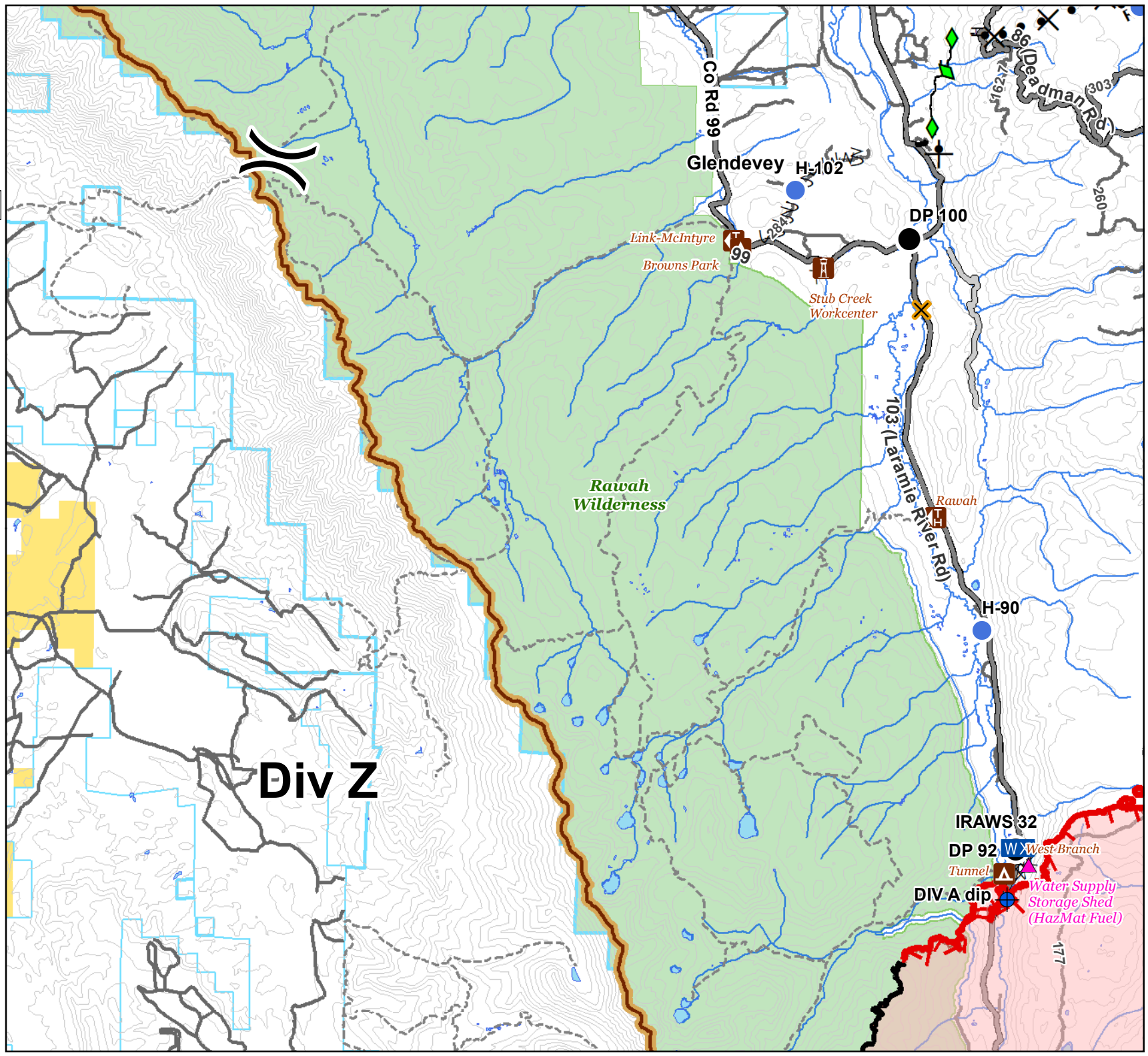
### Branch II



0 0.250.5 1  
Miles

E. Vekri  
Acres from IR  
9/6/2020 2:28  
UTM NAD 83 Z13N

- Critical Assets
- Campground
- Other Recreation Site
- Trailhead
- Closure
- Dip Site
- Drop Point
- Helispot
- Mobile Weather Unit
- Division Break
- Uncontrolled Fire Edge
- Contained Line
- Completed Dozer Line
- Completed Hand Line
- Road as Completed Line
- Access or Improved Road
- Completed Plow Line
- Proposed Dozer Line
- Fire Break Planned or Incomplete
- Fire Perimeter
- Closure Area
- County Road
- Other Road
- Trail
- Wilderness Areas
- Forest Service
- State



# Div Z

