

Air Operations

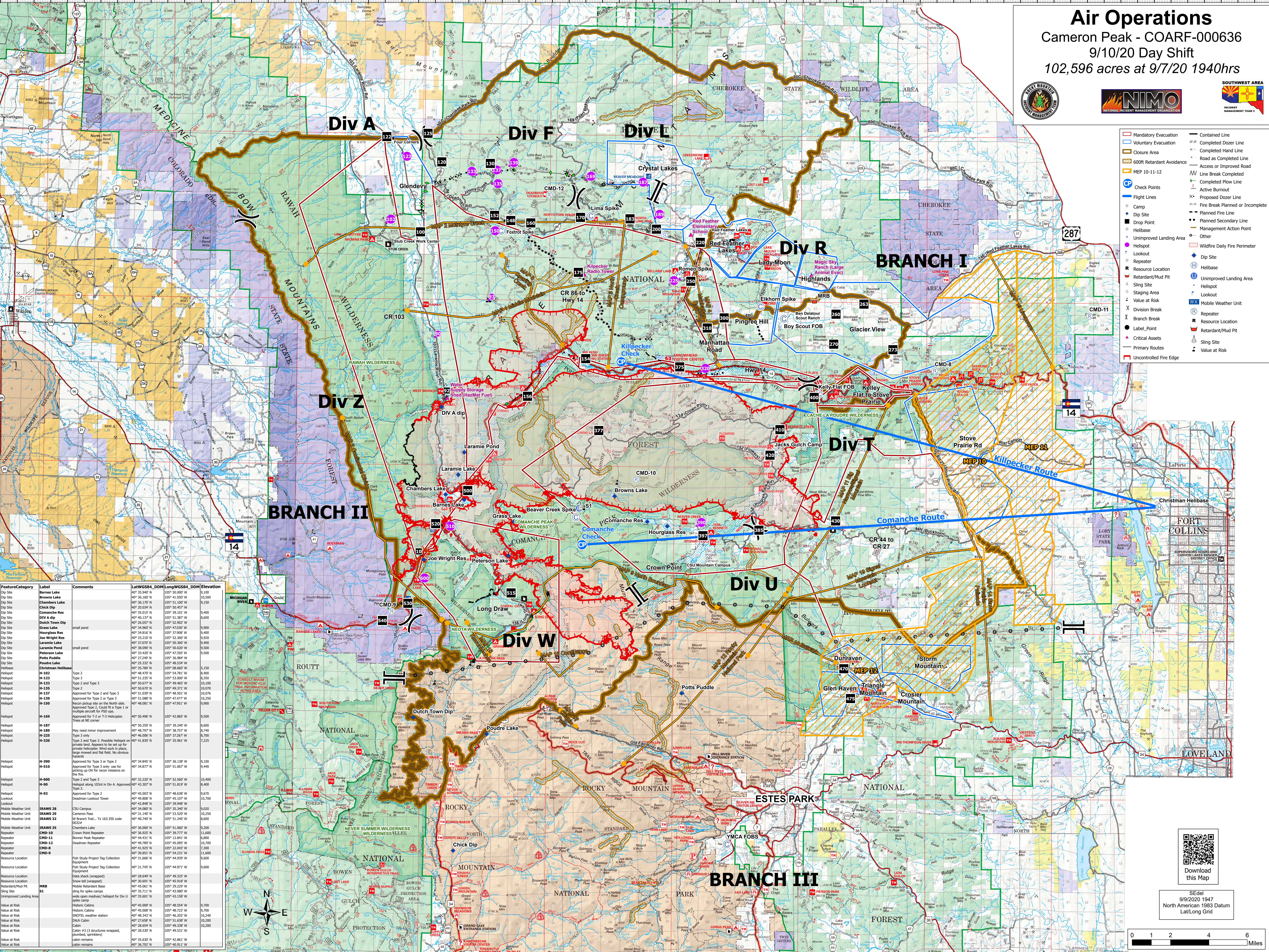
Cameron Peak - COARF-000636

9/10/20 Day Shift

102,596 acres at 9/7/20 1940hrs



- Mandatory Evacuation
- Voluntary Evacuation
- Closure Area
- 600ft Retardant Avoidance
- MEP 10-11-12
- Check Points
- Flight Lines
- Camp
- Dip Site
- Drop Point
- Helibase
- Unimproved Landing Area
- Helispot
- Repeater
- Resource Location
- Retardant/Mud Pit
- Sling Site
- Staging Area
- Value at Risk
- Division Break
- Branch Break
- Label Point
- Critical Assets
- Primary Routes
- Uncontrolled Fire Edge
- Contained Line
- Completed Dozer Line
- Completed Hand Line
- Road as Completed Line
- Access or Improved Road
- Line Break Completed
- Completed Plow Line
- Active Burnout
- Proposed Dozer Line
- Fire Break Planned or Incomplete
- Planned Fire Line
- Management Secondary Line
- Management Action Point
- Other
- Wildfire Daily Fire Perimeter
- Dip Site
- Helibase
- Unimproved Landing Area
- Helispot
- Lookout
- Repeater
- Resource Location
- Retardant/Mud Pit
- Sling Site
- Value at Risk



FeatureCategory	Label	Comments	Lat/WGS84_DDM	Long/WGS84_DDM	Elevation
Dip Site	Barnes Lake		40° 36.940' N	105° 50.000' W	8,100
Dip Site	Browns Lake		40° 36.160' N	105° 41.050' W	10,300
Dip Site	Chambers Lake		40° 36.170' N	105° 51.100' W	9,150
Dip Site	Chick Dip		40° 35.034' N	105° 50.467' W	9,400
Dip Site	Comanche Res		40° 35.015' N	105° 39.101' W	9,400
Dip Site	DIV A dip		40° 40.137' N	105° 51.387' W	8,600
Dip Site	Dutch Town Dip		40° 34.857' N	105° 52.807' W	9,900
Dip Site	Grass Lake	small pond	40° 34.960' N	105° 47.030' W	9,900
Dip Site	Hourglass Res		40° 34.818' N	105° 37.908' W	9,400
Dip Site	Joe Wright Res		40° 33.228' N	105° 52.369' W	9,600
Dip Site	Laramie Lake		40° 37.070' N	105° 50.360' W	9,400
Dip Site	Laramie Pond	small pond	40° 38.990' N	105° 50.020' W	9,500
Dip Site	Peterson Lake		40° 33.420' N	105° 47.350' W	9,500
Dip Site	Potts Puddle		40° 43.940' N	105° 38.984' W	9,500
Dip Site	Proctor Lake		40° 25.332' N	105° 48.534' W	9,500
Helibase	Christman Helibase		40° 35.780' N	105° 08.660' W	5,150
Helispot	H-112	Type 2	40° 44.470' N	105° 44.780' W	8,400
Helispot	H-123	Type 3	40° 51.235' N	105° 53.000' W	8,350
Helispot	H-133	Type 2 and Type 3	40° 50.677' N	105° 49.460' W	10,100
Helispot	H-135	Type 2	40° 50.670' N	105° 49.271' W	10,200
Helispot	H-137	Approved for Type 2 and Type 3	40° 51.039' N	105° 48.501' W	10,076
Helispot	H-139	Approved for Type 2 or Type 3	40° 51.088' N	105° 47.477' W	10,250
Helispot	H-150	Reason partial site on the north side. Approved Type 2. Could fit a Type 1 or multiple aircraft for P50 ops.	40° 48.081' N	105° 47.951' W	9,900
Helispot	H-169	Approved for Type 2 or Type 3	40° 50.490' N	105° 42.865' W	9,500
Helispot	H-187	Needs at NE corner	40° 50.259' N	105° 39.240' W	8,600
Helispot	H-189	May need minor improvement	40° 48.797' N	105° 38.757' W	8,740
Helispot	H-225	Type 3 only	40° 46.000' N	105° 37.267' W	8,700
Helispot	H-230	Type 2 and Type 3. Possible helispot on private land. Appears to be set up for private helispot. Wind sock in place, large mowed and flat field. No obvious hazards.	40° 43.880' N	105° 35.961' W	7,225
Helispot	H-390	Approved for Type 3 or Type 2	40° 34.845' N	105° 36.138' W	8,100
Helispot	H-510	Approved for Type 3 only-use for picking up Or for recon missions on the fire.	40° 34.877' N	105° 51.067' W	9,440
Helispot	H-600	Type 2 and Type 3	40° 32.220' N	105° 52.560' W	10,400
Helispot	H-600	Helispot along 103rd in Div A. Approved Type 2.	40° 43.307' N	105° 51.819' W	8,400
Helispot	H-93	Approved for Type 2	40° 45.003' N	105° 48.638' W	9,670
Lookout	H-102	Deadman Lookout Tower	40° 42.808' N	105° 49.898' W	10,700
Lookout	H-103	Deadman Lookout Tower	40° 42.848' N	105° 39.948' W	8,400
Mobile Weather Unit	IRAWS 28	CSU Campus	40° 34.880' N	105° 35.340' W	9,000
Mobile Weather Unit	IRAWS 29	Cameron Pass	40° 31.180' N	105° 33.530' W	10,250
Mobile Weather Unit	IRAWS 32	W Branch Trail, Tx 163,350 code 0032	40° 49.740' N	105° 51.240' W	8,600
Mobile Weather Unit	IRAWS 35	Chambers Lake	40° 36.000' N	105° 51.060' W	9,200
Repeater	CMD-10	Crown Point Repeater	40° 36.925' N	105° 39.777' W	11,600
Repeater	CMD-11	Banner Peak Repeater	40° 44.431' N	105° 12.941' W	8,800
Repeater	CMD-12	Deadman Repeater	40° 40.709' N	105° 49.100' W	10,700
Repeater	CMD-8	Repeater	40° 41.925' N	105° 22.043' W	7,300
Resource Location	CMD-9	Repeater	40° 30.851' N	105° 54.231' W	11,600
Resource Location	CMD-11	Fish Study Project Tag Collection Equipment	40° 31.860' N	105° 44.939' W	9,600
Resource Location	CMD-12	Fish Study Project Tag Collection Equipment	40° 31.745' N	105° 44.971' W	9,600
Resource Location	MSB	Data shack (wrapped)	40° 28.649' N	105° 49.325' W	9,700
Resource Location	MSB	Snow fall (wrapped)	40° 30.691' N	105° 45.518' W	9,700
Resource Location	MSB	Mobile Retardant Base	40° 48.245' N	105° 46.205' W	10,240
Sling Site	MSB	Sling for spike camps	40° 35.711' N	105° 43.080' W	10,200
Unimproved Landing Area	MSB	Wide open meadow/helispot for Div U spike camp	40° 35.601' N	105° 43.158' W	10,200
Value at Risk	Cabin	Historic Cabins	40° 45.009' N	105° 48.554' W	9,700
Value at Risk	Cabin	Historic Cabins	40° 45.008' N	105° 48.723' W	9,700
Value at Risk	Cabin	SNOWTE weather station	40° 48.245' N	105° 46.205' W	10,240
Value at Risk	Cabin	Ditch Cabin	40° 27.658' N	105° 51.638' W	10,200
Value at Risk	Cabin	Cabin	40° 28.654' N	105° 49.338' W	10,200
Value at Risk	Cabin	Cabin #3 (3 structures wrapped, plumbed, sprinklers)	40° 28.530' N	105° 49.531' W	10,200
Value at Risk	Cabin	cabin remains	40° 35.630' N	105° 42.861' W	9,500
Value at Risk	Cabin	cabin remains	40° 36.792' N	105° 42.861' W	9,500



Download this Map