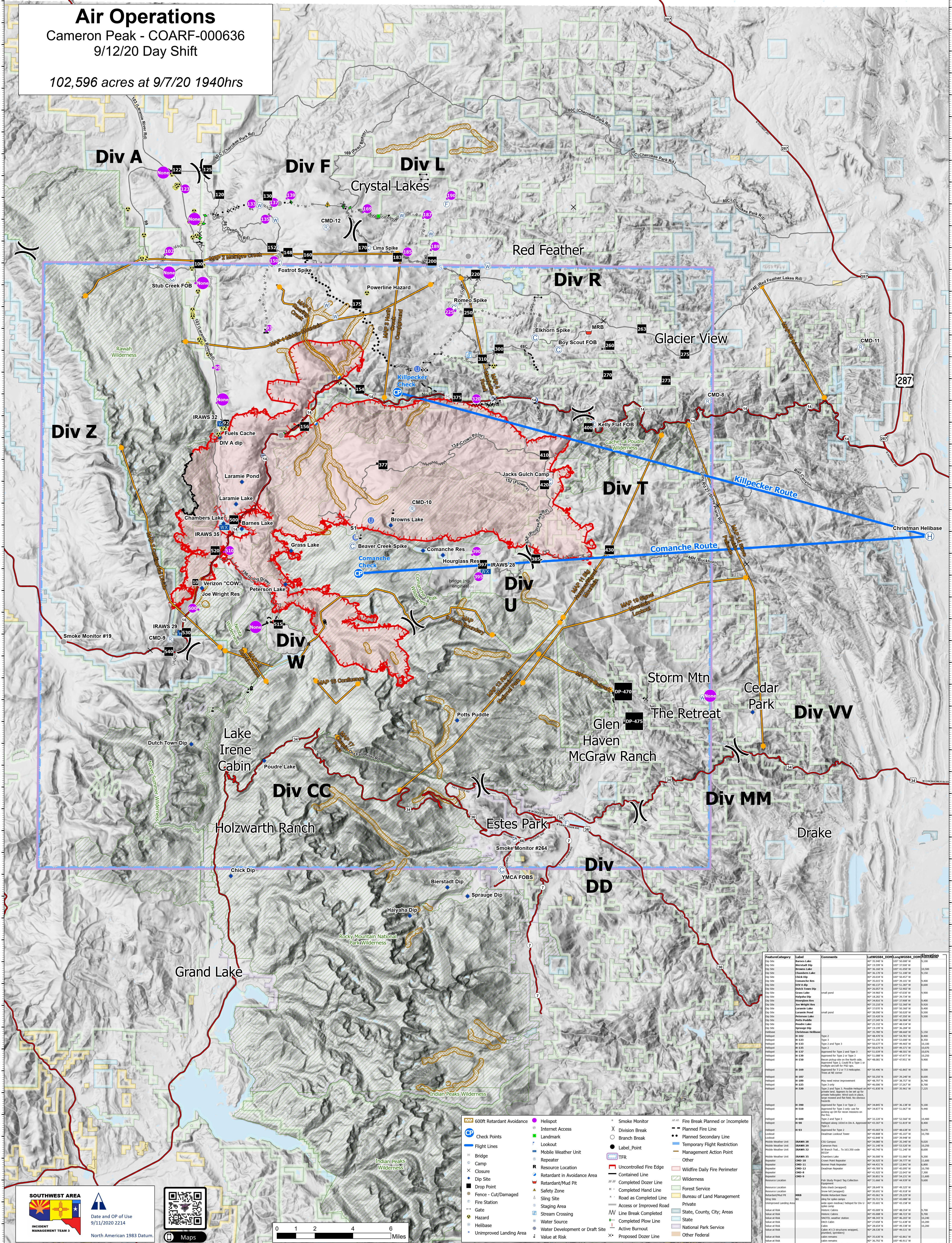


Air Operations

Cameron Peak - COARF-000636
9/12/20 Day Shift
102,596 acres at 9/7/20 1940hrs



Feature/Category	Label	Comments	Lat	WGS84_DDM	Long	WGS84_DDM	UTM	Elevation
Division	Div A	Stub Creek FOB	40°53'00" N	106°56'00" W	106°56'00" W	106°56'00" W	106°56'00" W	9,500
Division	Div F	Crystal Lakes	40°53'00" N	106°56'00" W	106°56'00" W	106°56'00" W	9,500	
Division	Div L	Lima Spike	40°53'00" N	106°56'00" W	106°56'00" W	106°56'00" W	9,500	
Division	Div R	Red Feather	40°53'00" N	106°56'00" W	106°56'00" W	106°56'00" W	9,500	
Division	Div T	Glacier View	40°53'00" N	106°56'00" W	106°56'00" W	106°56'00" W	9,500	
Division	Div U	Jacks Gulch Camp	40°53'00" N	106°56'00" W	106°56'00" W	106°56'00" W	9,500	
Division	Div W	Laramie Pond	40°53'00" N	106°56'00" W	106°56'00" W	106°56'00" W	9,500	
Division	Div CC	Holzwarth Ranch	40°53'00" N	106°56'00" W	106°56'00" W	106°56'00" W	9,500	
Division	Div MM	McGraw Ranch	40°53'00" N	106°56'00" W	106°56'00" W	106°56'00" W	9,500	
Division	Div DD	Estes Park	40°53'00" N	106°56'00" W	106°56'00" W	106°56'00" W	9,500	
Division	Div VV	Storm Mtn	40°53'00" N	106°56'00" W	106°56'00" W	106°56'00" W	9,500	

SOUTHWEST AREA
INCIDENT MANAGEMENT TEAM 3
Date and OP of Use
9/11/2020 2214
North American 1983 Datum.

0 1 2 4 6
Miles

- 600ft Retardant Avoidance
- Check Points
- Flight Lines
- Camp
- Closure
- Gate
- Heliport
- Unimproved Landing Area
- Smoke Monitor
- Internet Fire Access
- Landmark
- Lookout
- Mobile Weather Unit
- Repeater
- Resource Location
- Retardant in Avoidance Area
- Safety Zone
- Sling Site
- Staging Area
- Stream Crossing
- Water Source
- Water Development or Draft Site
- Value at Risk
- Proposed Dozer Line
- Fire Break Planned or Incomplete
- Planned Fire Line
- Planned Secondary Line
- Temporary Flight Restriction
- Management Action Point
- Other
- Uncontrolled Fire Edge
- Contained Line
- Completed Dozer Line
- Completed Hand Line
- Road as Completed Line
- Access or Improved Road
- Line Break Completed
- Completed Flow Line
- Active Burned Line
- Other Federal
- Wildfire Daily Fire Perimeter
- Wilderness
- Fire Service
- Bureau of Land Management
- Private
- State, County, City, Areas
- National Park Service
- Other Federal