

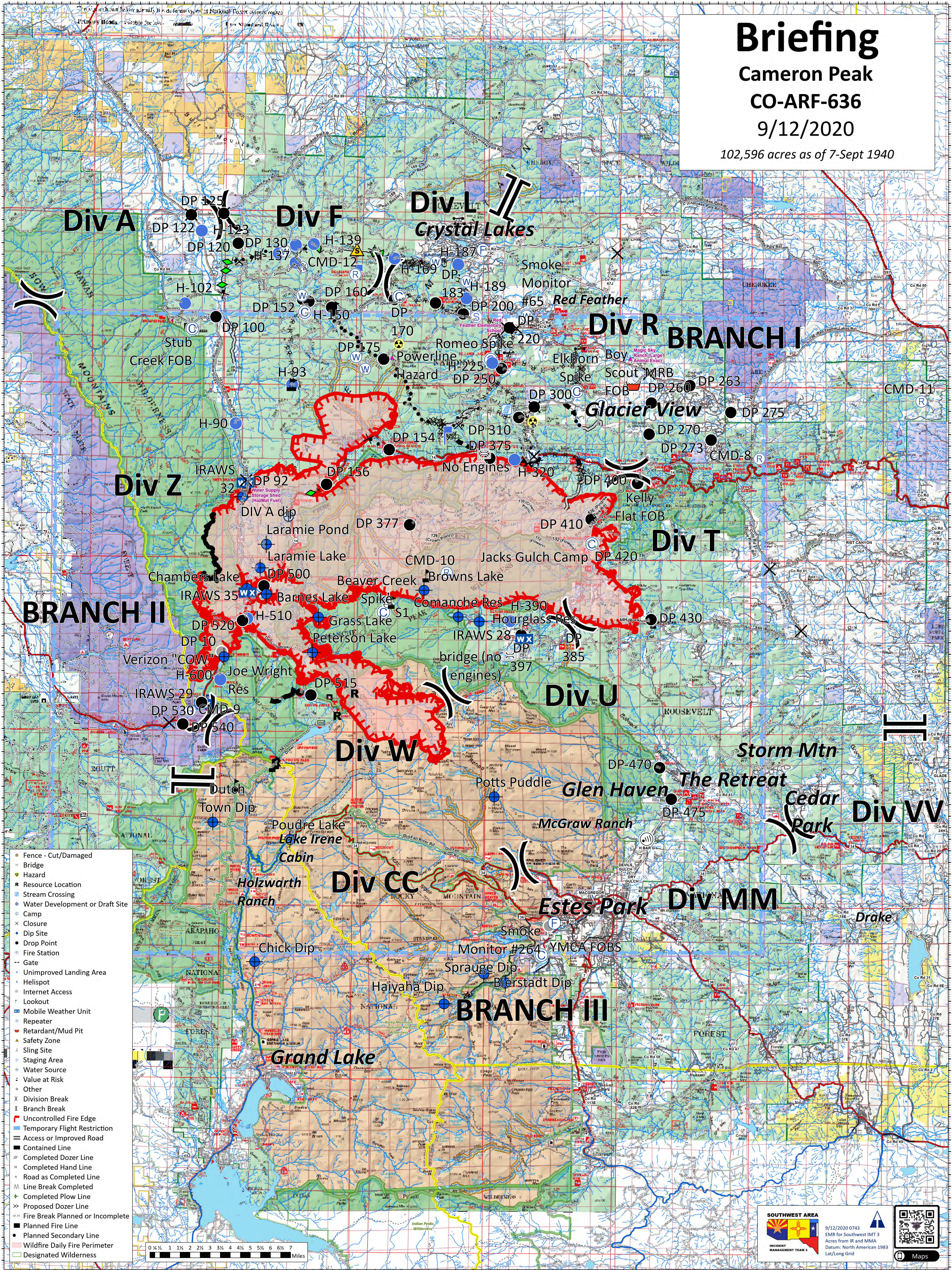
# Briefing

## Cameron Peak

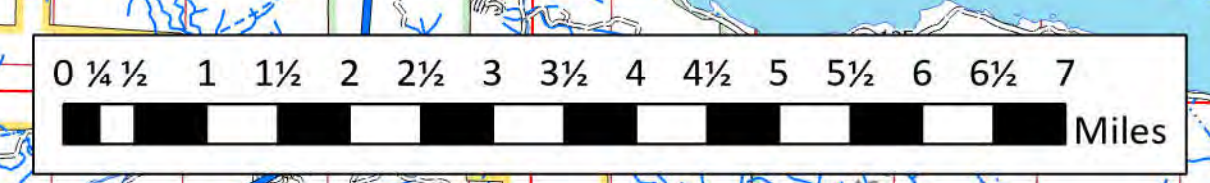
### CO-ARF-636

#### 9/12/2020

102,596 acres as of 7-Sept 1940



- Fence - Cut/Damaged
- Bridge
- Hazard
- Resource Location
- Stream Crossing
- Water Development or Draft Site
- Camp
- Closure
- Dip Site
- Drop Point
- Fire Station
- Gate
- Unimproved Landing Area
- Helispot
- Internet Access
- Lookout
- Mobile Weather Unit
- Repeater
- Retardant/Mud Pit
- Safety Zone
- Sling Site
- Staging Area
- Water Source
- Value at Risk
- Other
- Division Break
- Branch Break
- Uncontrolled Fire Edge
- Temporary Flight Restriction
- Access or Improved Road
- Contained Line
- Completed Dozer Line
- Completed Hand Line
- Road as Completed Line
- Line Break Completed
- Completed Plow Line
- Proposed Dozer Line
- Fire Break Planned or Incomplete
- Planned Fire Line
- Planned Secondary Line
- Wildfire Daily Fire Perimeter
- Designated Wilderness



**SOUTHWEST AREA**  
 INCIDENT MANAGEMENT TEAM 3

9/12/2020 0743  
 EMR for Southwest IMT 3  
 Acres from IR and MMA  
 Datum: North American 1983  
 Lat/Long Grid

Maps