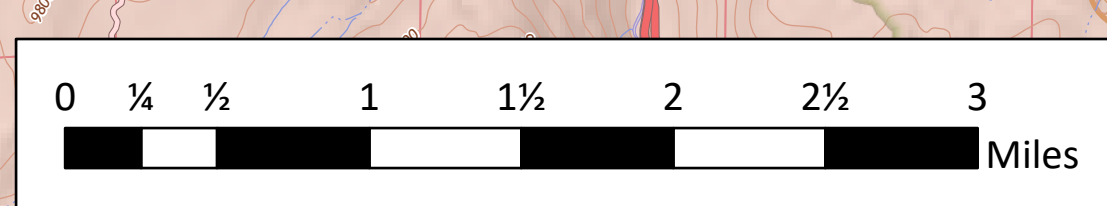
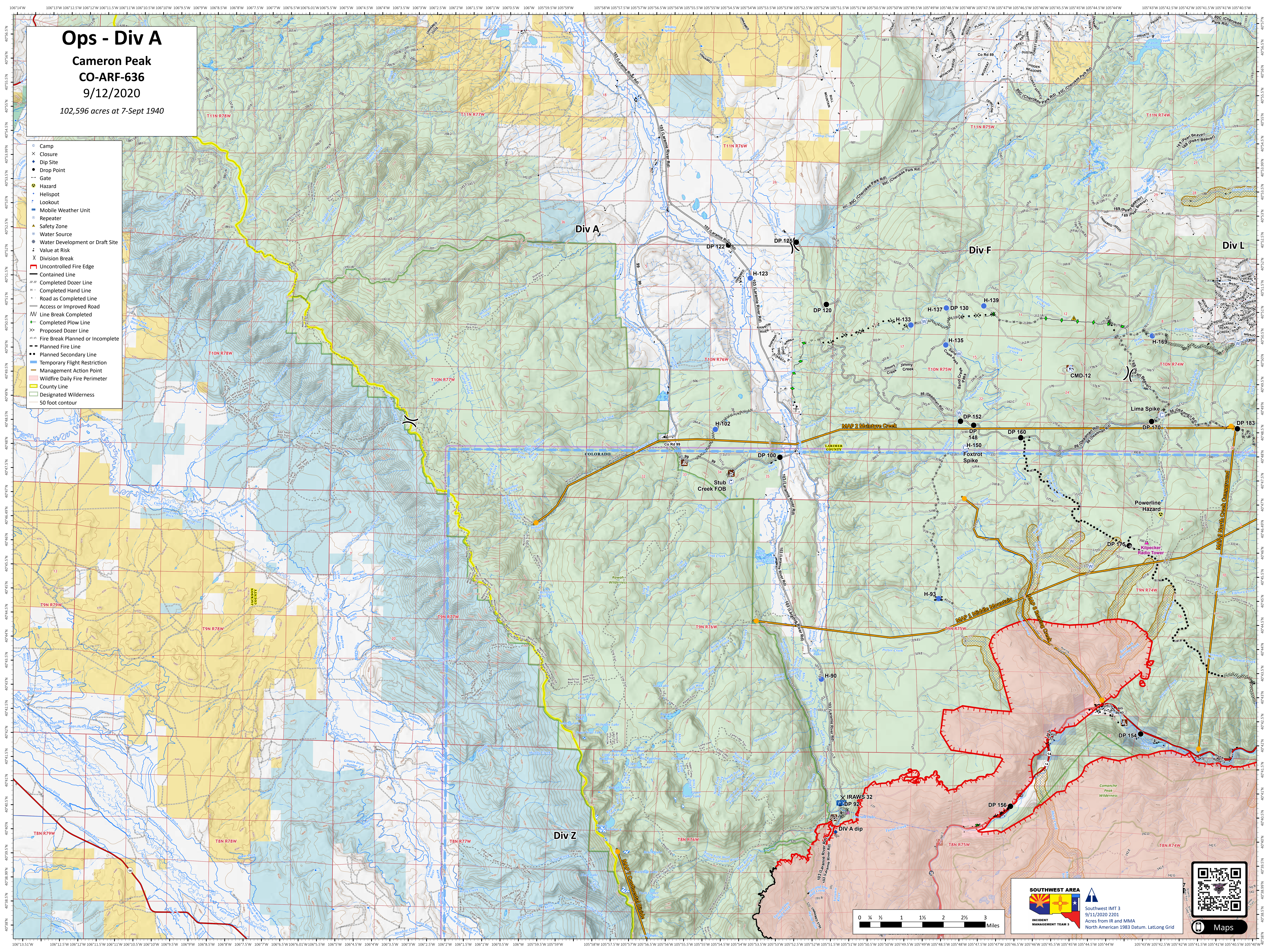


Ops - Div A

Cameron Peak
CO-ARF-636
9/12/2020

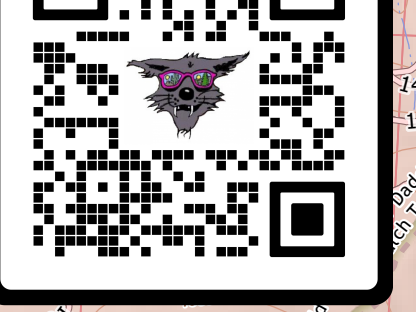
102,596 acres at 7-Sept 1940

- Camp
- ✕ Closure
- Dip Site
- Drop Point
- Gate
- ⚠ Hazard
- Helispot
- 👁 Lookout
- 🚚 Mobile Weather Unit
- 🔄 Repeater
- ▲ Safety Zone
- 🌊 Water Source
- ⊕ Water Development or Draft Site
- ⚠ Value at Risk
- ✕ Uncontrolled Fire Edge
- Contained Line
- Completed Dozer Line
- Completed Hand Line
- Road as Completed Line
- Access or Improved Road
- Line Break Completed
- Completed Plow Line
- ✕ Proposed Dozer Line
- Fire Break Planned or Incomplete
- Planned Fire Line
- Planned Secondary Line
- Temporary Flight Restriction
- Management Action Point
- Wildfire Daily Fire Perimeter
- County Line
- Designated Wilderness
- 50 foot contour



SOUTHWEST AREA
INCIDENT MANAGEMENT TEAM 3

Southwest IMT 3
9/11/2020 2201
Acres from IR and MMA
North American 1983 Datum, LatLong Grid



Maps