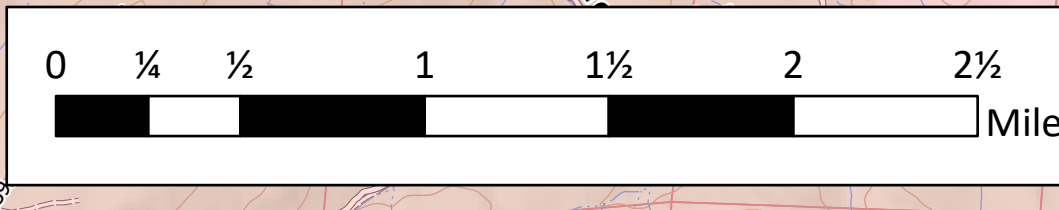
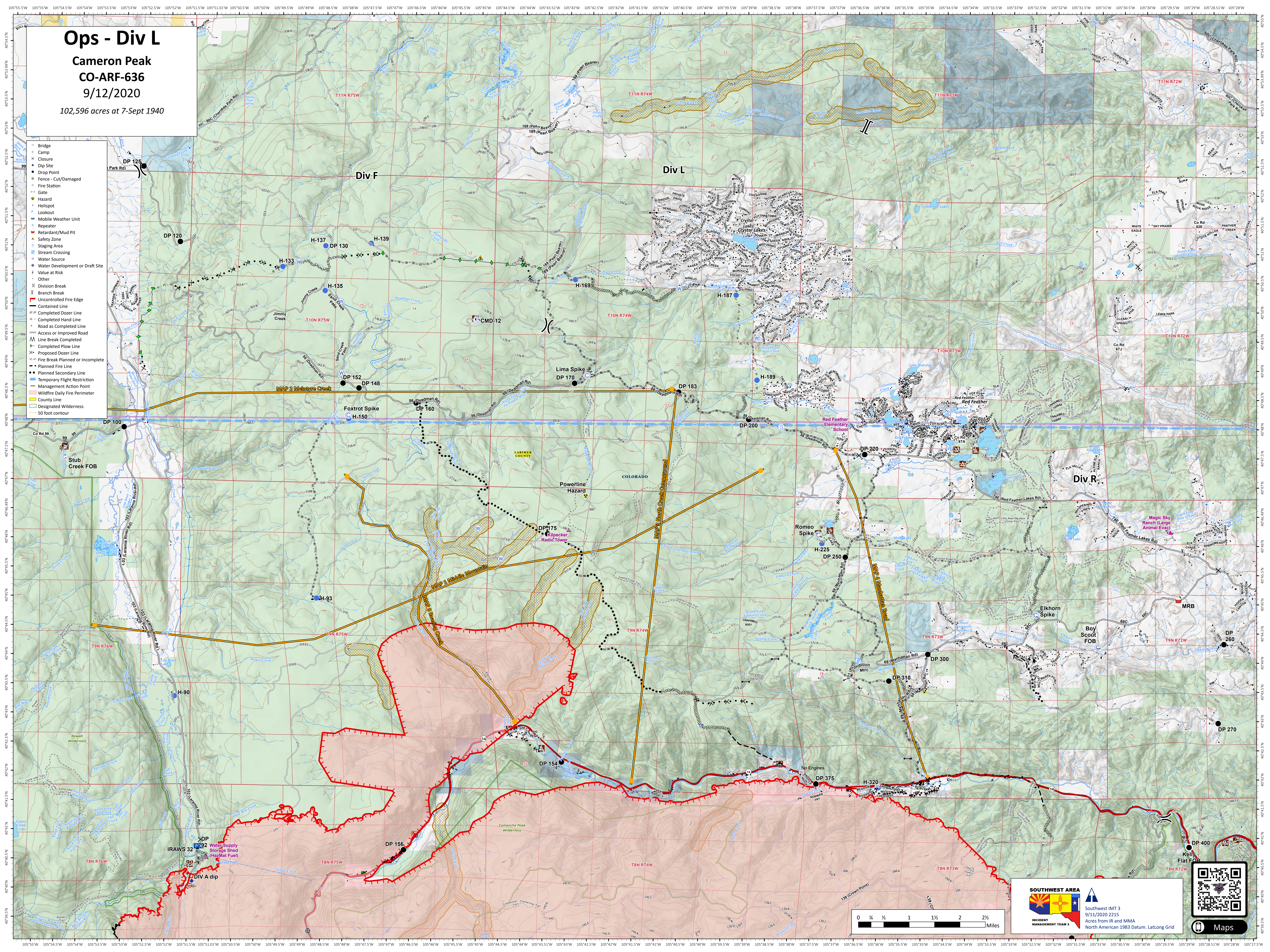


Ops - Div L

Cameron Peak
CO-ARF-636
9/12/2020

102,596 acres at 7-Sept 1940

- Bridge
- Camp
- Closure
- Dip Site
- Drop Point
- Fence - Cut/Damaged
- Fire Station
- Gate
- Hazard
- Helispot
- Lookout
- Mobile Weather Unit
- Repeater
- Retardant/Mud Pit
- Safety Zone
- Staging Area
- Stream Crossing
- Water Source
- Water Development or Draft Site
- Value at Risk
- Other
- Division Break
- Branch Break
- Uncontrolled Fire Edge
- Completed Dozer Line
- Completed Hand Line
- Road as Completed Line
- Access or Improved Road
- Line Break Completed
- Completed Plow Line
- Proposed Dozer Line
- Fire Break Planned or Incomplete
- Planned Fire Line
- Planned Secondary Line
- Temporary Flight Restriction
- Management Action Point
- Wildfire Daily Fire Perimeter
- County Line
- Designated Wilderness
- 50 foot contour



SOUTHWEST AREA
INCIDENT MANAGEMENT TEAM 3

Southwest IMT 3
9/11/2020 2215
Acres from IR and MMA
North American 1983 Datum, LatLong Grid

